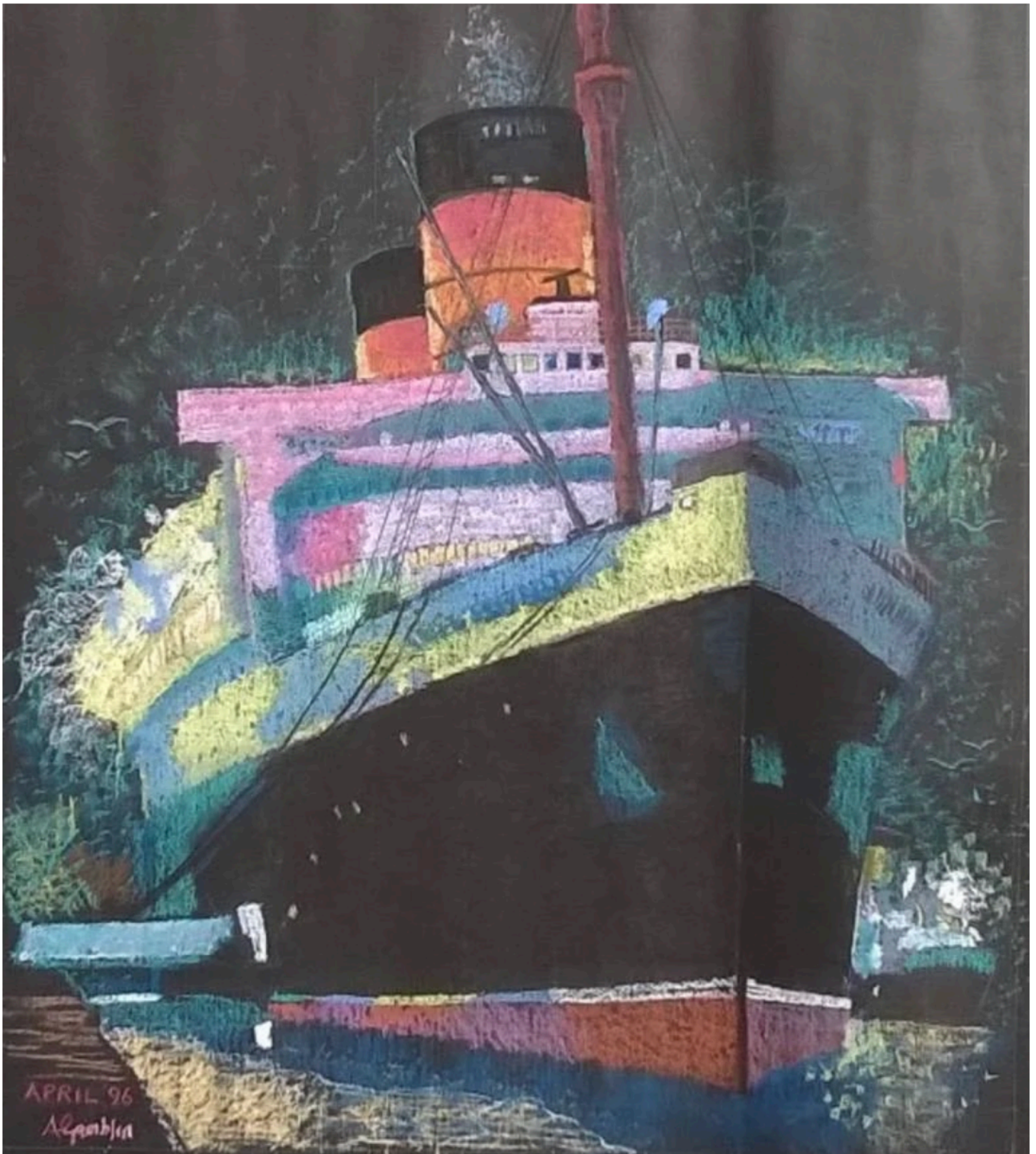




THE PHILADELPHIA SHIP MODEL SOCIETY

Quarterdeck

December
2021



Queen Elizabeth at Night Unfinished Pastel





Quarterdeck

DECEMBER
2021
Our 90th

THE PHILADELPHIA SHIP MODEL SOCIETY.

www.philadelphiaSHIPmodelSociety.com

Launched January 7, 1931

The 889th meeting of the Philadelphia Ship Model Society was held at the Independence Seaport Museum on December 2, 2021. Called to order at 7:15 P.M. by President Jim Wheeler and opened with the Pledge of Allegiance to the flag.

VISITOR: Clavin Burnett- Navy ROTC.

ELECTION RESULTS OF SOCIETY OFFICERS FOR 2022

President: Mike Weaver

Vice President: Mike Zimmerman

Treasurer: Steve Bulova

Secretary: — — — — — volunteer needed

Editor: Ron Spicer

Web Master: Joshua Fichmann

SHACK DUTY: A reminder: Our Society has worked very hard to establish the Shack. We have to share the coverage and the responsibility of promoting ship model building and the club. (Mike Weaver)

If you would like to help out and sit the shack, call or email Joe Jordan, jjvtown@aol.com

VOLUNTEERS NEEDED FOR THE APRIL 2022

NORTHEAST CONFERENCE

2022 is the year that PSMS will be the host club.

Contact Mike Weaver 215-964-0140 eghannah@gmail.com

or Steve Bulova 215-747-7441 bulovastev@msncom

Conference committee is: Steve Bulova, chairman, Pat Leaf, chairman Emeritus, Ron Neilson, Fred Signor, Joshua Fichmann, Mike Weaver. Spence Delin will supply 9 plaques. Todd Wardwell will obtain a speaker. We must contact vendors to see if they will donate door prizes.

HOLIDAY BRUNCH: Steve Bulova reports that 46 members and guests will attend the Holiday Brunch. The Yacht Club requires masks if not vaccinated.

SHOW AND TELL: Todd Wardwell, brass shell casing, Mike Weaver, Swift Pilot Boat, Mike Zimmerma, USS Langley-AV-3,

For PSMS Name Tags Contact Spence Delin
sdelin@verizon.com

**The next PSMS meeting at the
Independence Seaport Museum
January 6th at 7:00 PM**

SEAPORT MUSEUM UPDATE from Joe Jordan.

Joe expressed seeming downplay of the Boat Shop. No web cam, no sign, no work. To increase visitors to the boat shop, a sign will be installed on the bulkhead: "BOAT SHOP".

The web cam has been moved to stop after hours break-ins and damage to ISM and the docks/boats. Joe expressed discomfort with moving the Ship Shack to a dead end area. The objection has been noted. We will continue to support shack sitters with \$10 against the \$20 charge.

ISM goals are • reduce collections and focus on the mission statement • Olympia- find \$X million for restoration

* Staging collections in a more dignified way • The building.



Meeting adjourned 9:20 PM

Respectfully submitted,

Vice President Mike Weaver



Visitor Calvin Burnett (left) with Bobbi Zimmerman and Todd Wardwell

INDEPENDENCE SEAPORT MUSEUM

Hours of operation

Open full time: 10AM to 5PM seven days a week.

BATTLESHIP NEW JERSEY:

The battleship is open for tours every day from 11 am to 3pm. Add a free guided tour of turret II or an engine Room.



THANK YOU



Jim and Betsy Nutt

PSMS has had the privilege of having its summer picnic at the home of Jim and Betsy Nutt. The Society could not have ordered a more perfect site or had more congenial and welcoming hosts. The membership looked forward to our gathering at this bucolic setting every year.

All good things come to an end and for Jim and Betsy, it is time to downsize and enjoy their retirement. And so we thank them for their years of hospitality and wish them good luck and all the best in their new home.



Photos: Ron Spicer

THE PHILADELPHIA SHIP MODEL SOCIETY

Launched January 7, 1931

The Philadelphia Ship Model Society (PSMS) meets on the first Thursday of each month at the Independence Seaport museum (ISM) at 1900 hours.

ISM is located at Penn's Landing,
211 South Columbus Boulevard, Philadelphia,
Pennsylvania, 19106.

Guests are always welcome!

PSMS annual dues are \$35.00 for an INDIVIDUAL

PARKING
PSMS WILL
SUBSIDIZE YOUR
PARKING COST
AT \$ 10.00
PER MEETING AT ISM
UNTIL FURTHER
NOTICE

SHOW & TELL

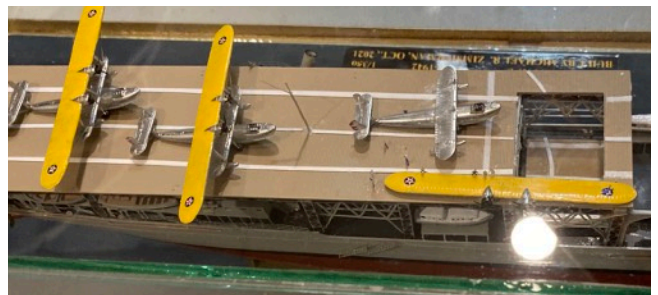
MIKE ZIMMERMAN



USS LANGLEY AV-3

By Trumpeter, Scale 1/350

Mike has brought our attention to an excellent plastic model by Trumpeter. Mike chose this because of Trumpeter's quality and that it was an unusual ship. She was the United States Navy's first aircraft carrier, converted in 1920 from the collier USS Jupiter and also the US Navy's first turbo-electric-powered ship. Following another conversion to a seaplane tender, Langley fought in WWII. On February 27th 1942, while ferrying a cargo of USAAF P-40's to Java, she was attacked by nine twin-engine Japanese bombers and so badly damaged that she had to be scuttled by her escorts.



Photos: Ron Spicer

SHOW & TELL

MIKE WEAVER

Photos: Ron Spicer



SWIFT PILOT BOAT
Circa 1900, Scale 1/35
An early 19th century
Virginia Pilot ship.
They were used extensively
on the Chesapeake Bay
and evolved into the famed
Baltimore clippers.
Materials- all wood.

SHOW & TELL

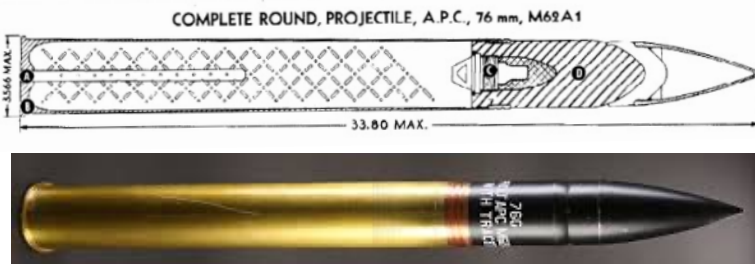
TODD WARDWELL

Photo: Ron Spicer



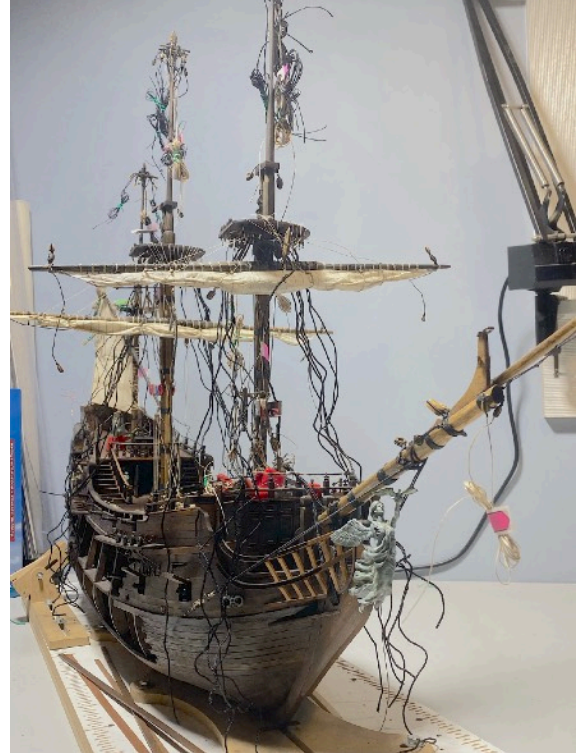
BRASS SHELL CASING

Todd brought in a 76mm shell casing. He described the exercise in which he took part while in the Coast Guard, the object of which was to fire off the remaining obsolete brass rounds that had a range of 8 to 12 miles.



JOSHUA FICHMANN

Photo: Joshua Fichmann



THE BLACK PEARL

The lower masts are in. He is adding chains to the dead eyes on the open hull side by adding a single piece of planking for structural strength supporting the shrouds. He is now ready to tie them in and start with the fore and aft stay rigging.

ATTENTION SHOW AND TELLERS!

If you plan to make a presentation, please fill out the attached form, bring it with you to the meeting and leave it on the table. Or, if you wish, use one of the forms provided at the meeting. Write as much as you can about your presentation. Include, if applicable, kit maker, size, and, if possible, a little history. Help us present your project accurately in the Quarterdeck.

Thank you - The editor



Joe Jordan and Jim Macintyre string the lights on the Shack on Saturday, December 12th to compliment the *Parade of Lights* on small boats on the Delaware River that evening.



Two young men showed great interest in Joe Jordan's Radio controlled Chris Craft model.



Shack sitters who displayed their models were, From left, Ron Spicer, Mike Weaver and Joe Jordan,



Visitor David Kohler from Lancaster County with his nephew Connor McNeil from Colorado Springs, an Oceanography student. David expressed an interest in building a model ship. Mike gave him one that would start him off!

THE SHIP MODEL SHACK



SHACK DUTY - A REMINDER

Our club has worked very hard to establish the Shack. We as, a group, have to share the coverage and the responsibility of promoting ship model building and the club. Those who can are urged to step up. See if you can volunteer one day a year.

Thank you.

(Mike Weaver)

PARKING COSTS WILL BE REIMBURSED !



Give a day to the ISM Shack experience.

Sat. 10 AM to 5 PM or Sunday 12 noon to 4 PM

Contact: Joe Jordan jjvtown@aol.com 609 518-9672

NOTICE : At the present time, Shack sitters will have to pay to park. Parking costs will be reimbursed thru the Treasurer Steve Bulova. Call 215-747-7441 or email bulovastevil@msn.com

SILVER SHIPS OF THE SEVEN SEAS



SILVER SHIPS OF THE SEVEN SEAS

It's that time of the year again. The Silver Ships are now on display at the Independence Seaport Museum. This holiday tradition features dozens of tiny silver ships from the museum's collection. They'll be here through the new year.

These sterling silver ships were collected by Jacobus and Louisa Pierot during their world travels over a 40 year period during the late 20th century. Each one is unique to the place where it was collected. It is a museum tradition to display them as part of its holiday celebration.



CLIP AND RETURN WITH YOUR PAYMENT

2022 DUES NOTICE



Bring a check or cash to a meeting. Dues are \$35.00 for an individual membership or \$40.00 for a family membership. Please make the check out to PSMS. Fill out the form and return with cash or Check in the proper amount

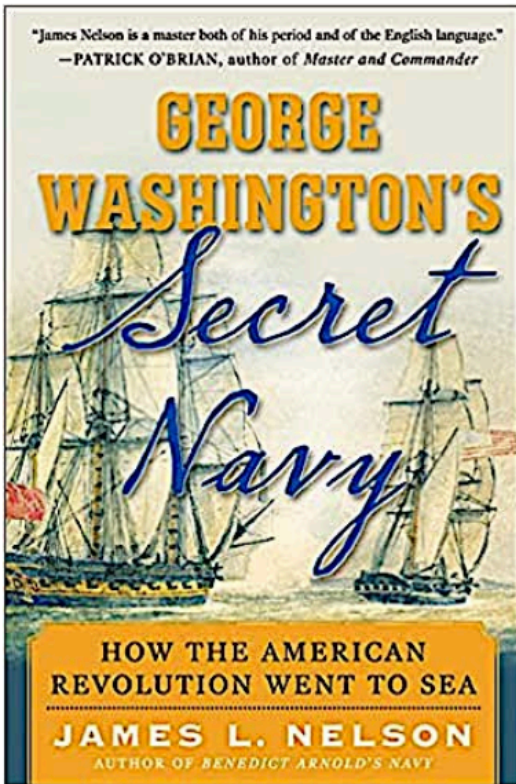
NAME _____

ADDRESS _____

PH _____ EMAIL _____

AMOUNT ENCLOSED _____

**Send to: Steve Bulova
Treasurer, PSMS
4631 Larchwood Ave.
Philadelphia, PA 19143**



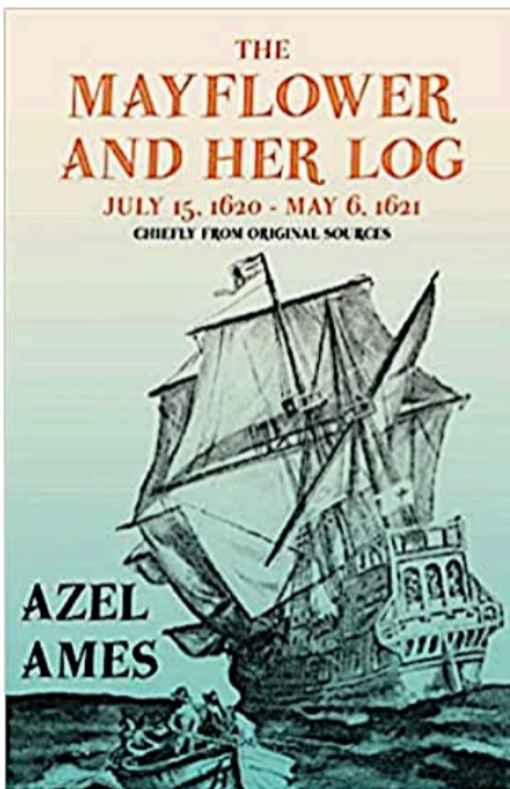
GEORGE WASHINGTON'S SECRET NAVY How the American Revolution Went to Sea

By James Nelson

In 1775 General George Washington secretly armed a handful of small ships and sent them to sea against the world's mightiest navy.

From the author of the critically acclaimed *Benedict Arnold's Navy*, here is the story of how America's first commander-in-chief whose previous military experience had been entirely on land - nursed the fledgling American Revolution through a season of stalemate by sending troops to sea. Mining previously overlooked sources, James L. Nelson's swiftly moving narrative shows that George Washington deliberately withheld knowledge of his tiny navy from the Continental Congress for more than two critical months, and that he did so precisely because he knew congress would not approve.

"Mr. Nelson has an episode that occupies no more than a few paragraphs in other histories of the Revolution and, with convincing research and vivid narrative style, turned it into an important, marvelously readable book"



THE MAYFLOWER AND HER LOG

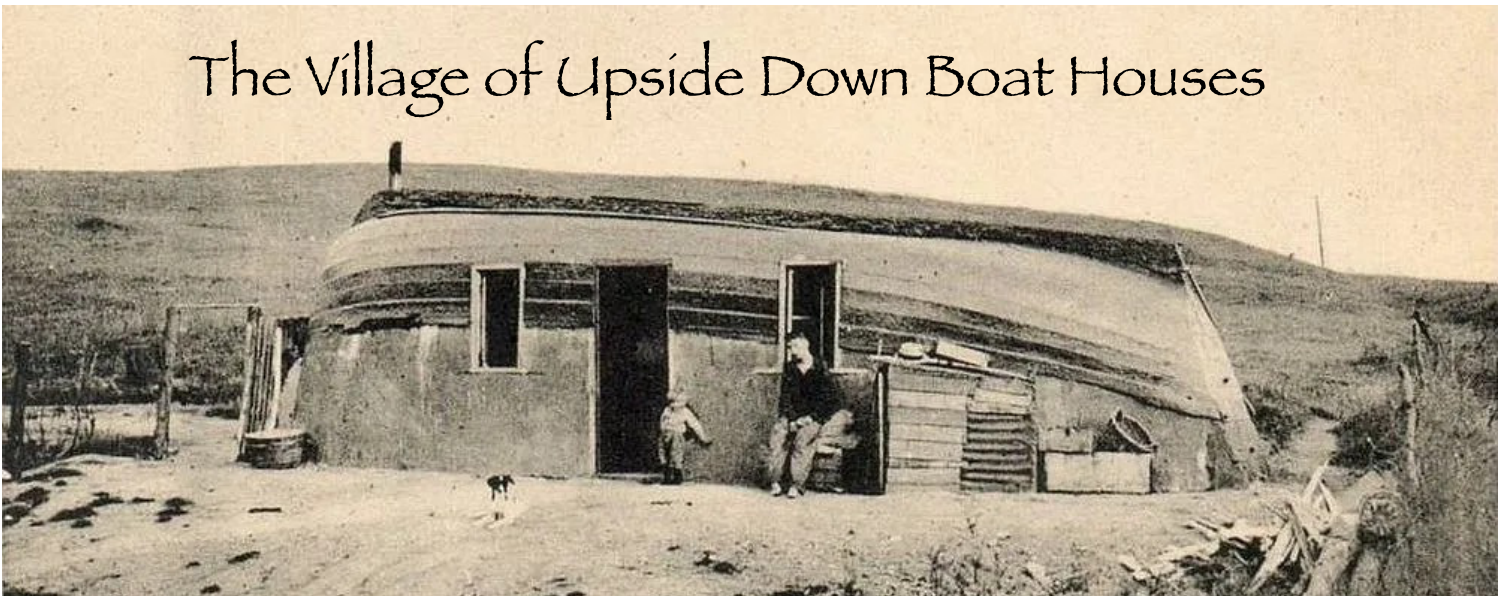
July 15, 1620 - May 6, 1621

By Azel Ames

First published in 1901, "The Mayflower and Her Log" looks in detail into the historic voyage of the "Mayflower", an English ship that transported early Pilgrims to the new world in 1620. The ship has since become an important part of American history and culture, as well as the subject of innumerable works of art, plays, films poems, songs, books, etc. Drawing upon original sources, this fascinating account of the incidents and people aboard the famous ship is highly recommended for those with an interest in American history and culture. Contents include ; "The Myth of the Mayflower", by G.K. Chesterton", "Introductory", "The Name - Mayflower", "The Mayflower's Consort the Speedwell", "The Mayflower's Charter and the Adventurers", "The May Flower - The Ship Herself", "The Officers and Crew of the Mayflower", "The Mayflower's Passengers", "Quarters, Cooking, Provisions", etc.

Read & Co. History is republishing this work.

The Village of Upside Down Boat Houses



By Emily Chandler

There's a sleepy seaside village in France with a small fishing village port, a population of less than 3,000 and some very peculiar looking houses. At first glance, they could almost appear to be an unfortunate pod of beached orcas, but look again carefully at those unusual roofs. Yes, those are boats.... *upside down!* Local fishermen of Equihen-Plage have lived under scavenged boat hulls here for over a century.

In the early 1900s, boats were constantly getting stranded the beach of this small fishing village. However, instead of going to waste, the poorest fishermen transformed these boats into the roofs for makeshift houses. It was known as the *Quartier des Quilles en l'Air*: the neighborhood of keels in the air. The bases of these houses were constructed of wood or stone and the boats, dragged up from the shore, turned upside down, covered in tar to make sure they were watertight, and used as the roof.

The fishermen didn't have much, so the interiors of these houses were very basic. The inside typically consisted of just a single room for the entire family, where they ate and slept... stoves were used both for cooking and heating and the boat homes lacked light, with only a very small window and the doorway to allow in sunlight.

During WWII all but one of the '*Quilles en l'air*' were destroyed. The last original boat house belonged to a painter who made it his workshop.

While the "*quartier*" of upturned boat homes might have disappeared from the village's shores temporarily, the tradition was never forgotten. They became an important symbol of the area's history and in the 1990s, the local authorities decided to revive the unusual style by constructing a hamlet of new and improved (and slightly less basic) versions to attract holiday makers in search of off-beat accommodation.

Today the '*Quilles en l'air*' are standing once again in almost the exact spots as their original positions. They can be rented and come fully equipped with modern comforts.





Short Sleeved Polo

PSMS SHIRTS & CAPS WITH EMBROIDERED SOCIETY LOGO

LONG SLEEVED POLO SHIRTS NAVY BLUE

Men's sizes small thru 4 XL.

Add \$2.00 for 2XL, \$3.00 for 3XL and \$4.00 for 4 XL

\$35.00

Women's sizes thru 2X.

\$35.00

SHORT SLEEVED POLO SHIRTS, NAVY BLUE

Men's sizes small thru 6XL and tall in XL thru 3X

Women's sizes small thru 3XL

\$28.75

Hat 6 panel wave cap, navy with white trim

\$14.50

FOR ORDERS:

Contact Pat Leaf at pjlebl@comcast.net

Please be sure of your size

FORTH COMING EVENTS

December 7th

Pearl Harbor Day

December 25th.



Christmas

January 1st.

New Years day

April 30, 2022

Northeast Conference

PSMS hosts this year.

June, 2022

Pennsville Farm and Craft Show

Date to be announced

July 4th

Independence Day

August

ModelCon

Date to be announced

Happy New Year!



THE SSMA JOURNAL

Become a member of SSMA

Annual dues are \$25.00

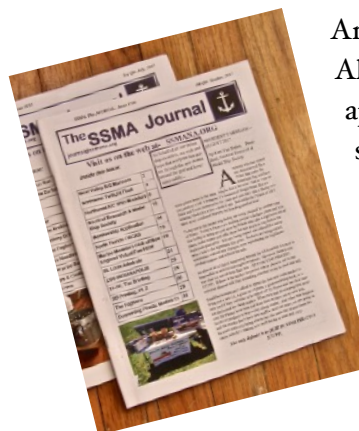
All membership

applications and renewals should be sent to:

Heinz Ricken

514 Cranford Avenue

Cranford NJ 07016



THE PHILADELPHIA SHIP MODEL SOCIETY

Launched January 7, 1931

The Philadelphia Ship Model Society (PSMS) meets on the first Thursday of each month at the

Independence Seaport Museum (ISM) at 1900 hours.

ISM is located at Penns Landing,

211 South Columbus Boulevard,

Philadelphia, Pennsylvania 19106.

GUESTS ARE ALWAYS WELCOME

PSMS annual dues are \$35.00 for an INDIVIDUAL MEMBERSHIP

\$40.00 for a FAMILY MEMBERSHIP: Includes MEMBER as well as family with children FREE



Delaware Valley Chapter meetings are held at The Independence Seaport Museum at Penn's landing on the Delaware River. Membership is \$15 for one year. Contact Steve Lovless at slldvesshsa@gmail.com or 215-495-8889 for more details or if you are interested in joining

THE NAUTICAL RESEARCH GUILD

"ADVANCING SHIP MODELING THROUGH RESEARCH"

Annual membership includes our world-renowned quarterly magazine, Nautical Research Journal, which features photographs and articles on ship model building, naval architecture, merchant and naval ship construction, maritime trade, nautical and maritime history, nautical archaeology and maritime art.

Other benefits include discounts on annual conferences, ship modeling seminars, NRG products and juried model competitions which are offered exclusively to Guild members. We hope you will consider joining our ongoing celebration of model ships and maritime history.



For more information contact us at: www.thenrg.org or call 585 968 8111



President
Jim Wheeler.



Vice President.
Mike weaver.



Treasurer.
Steve Bulova.



Secretary
Joshua Fichmann



PSMS OFFICERS AND EXECUTIVE BOARD

President: Jim Wheeler jrwheeler@att.net
Vice-president: Mike Weaver eghannah@yahoo.com
Secretary: Joshua Fichmann fichmann@yahoo.com
Treasurer: Steve Bulova bulovastewel@msn.com
Webmaster: Joshua Fichmann Fichmann@yahoo.com
Editor: Ron Spicer. spicer@icloud.com.

Joe Jordan, Representative to ISM. jjvtown@aol.com

Fred Signor, President 2020
Francine Serratore, President 2019
Todd Wardwell, President, 2018
Jim Wheeler, President, 2017
Fred Signor, President, 2016
Fred Signor, President, Emeritus

×

QUARTERDECK SUBMISSIONS

Take pictures with your camera or cell phone of a current or past project that you would like to show (maybe you already have). Include a description. Be sure to include the name of your (project, ship), scale, scratch or kit (manufacturer), era (year) and country, and anything you would want to say about your project. Just as you would when you fill out the presentation sheet at the meeting or stand up and talk.

A word about pictures. Make sure they are well lighted, (possibly take them outside) and in focus and no **more** than 2 or 3. Put them against plain backgrounds if possible - not on your oriental rug. **But workbench shots are welcome.** Send them to the editor:

spicer@icloud.com

PSMS SHOW N' TELL PRESENTATION FORM

Member: _____ Date: _____
Model presented: _____ Kit manufacturer: _____
Country of manufacturer: _____ Scale: _____ Scratch built: _____
Materials used in kit (wood, plastic, resin, etc): _____
Type of vessel (sailing, pleasure, military, etc): _____
Circa: _____ Ships origin (country): _____ % of completion: _____
Estimated date of completion: _____
Additional comments (ship's history, unique features, etc):

Were you happy with the kit? _____

What were you most pleased with regarding this project?

If you were to build this model again, what would you do differently (if anything)?

Do you have any suggestions regarding building techniques that you would like to share with our membership?

Would you like to ask our membership for advice on how to overcome any problem areas, which you may have encountered?

Is there anything else that you would care to share with us concerning this project?

If you presented something other than a Ship Model describe it below.

IF ADDITIONAL SPACE IS REQUIRED USE THE BACK OF THIS FORM. PLEASE SUBMIT THIS COMPLETED FORM TO THE SECRETARY AT THE CONCLUSION OF YOUR PRESENTATION FOR QUARTERDECK INPUT PURPOSES.

Thank god, you're home!



The Christmas tree passed out!

*Happy
New Year*

2022