



# Quarterdeck

JANUARY  
2021  
Our 90th  
Year

THE PHILADELPHIA SHIP MODEL SOCIETY.

[www.philadelphiaSHIPmodelsociety.com](http://www.philadelphiaSHIPmodelsociety.com)

Launched January 7, 1931

## Minutes of the Meeting

The 878th meeting of the Philadelphia Ship Model Society (PSMS) (virtually) was called to order by President Jim Wheeler at 19:11 and began with the Pledge of Allegiance

♥ **Sick Call:** Joe Gudonis is in Jean's hospital with pneumonia and COVID. Please hold him in your prayers.

**Visitors:** Tom Ruggiero and Bill Brown from the Ship Model Society of New Jersey, Ryland Crane from the Hampton Roads Ship Model Society and guest Elliot Howard

**Happy birthday Tom McElhinney.** He turned 87 Jan. 24th

**Treasurer's Report:** Steve Bulova - Accepted as read PSMS **Name Tags;** Spence Delin: contact [sdelin@verizon.net](mailto:sdelin@verizon.net)  
**Modelcon-** Projected for August pending the covid environment and the Battleship NJ schedule.

## NORTHEAST CONFERENCE

The USS Constitution Model Shipwright Guild, host of this years NE Conference has announced the new date agreed upon by the five clubs is October 2, 2021. A revised notice is on page——

**Treasurer Steve Bulova took the names of 5 members** and their membership numbers for the renewal of our Society membership in SSMA

## INDEPENDENCE SEAPORT MUSEUM:

**Due to New Covid-19 Guidelines Announced by the City of Philadelphia, Independence Seaport Museum is closed until Further Notice**

## THE ROTUNDA EXHIBIT

Joe Jordan reports that the Rotunda is clear. All the display tables were knocked down and the parts returned to storage. The remaining models are on the Shack bench and safe. Best show we ever had. Almost 4 months. Thousands of people walked by and saw not. While we were pulling models out, people were still stopping.

I'd like to thank Jeffrey Hufferberger of the Workshop on the Water, who found the material to build the display, which was inches away from the public, up against the glass- literally a foot away. 35 models in 48 feet of space. When you wish to pick them up, call Jeffrey at 1-609-226-0218. There is no rush. Jeffery will be in all week as the ISM is closed until March, but construction will begin in the rotunda in several weeks.

Weekdays are better, as there is only occasional coverage on weekends. No models were damaged!

Todd Wardwell suggested that the Society could use the first floor and its window. for model display in the front window.

Joe Jordan is looking into the possibilities.

## FEBRUARY PSMS ZOOM MEETING

The next PSMS meeting is scheduled for Thursday, **February 4th at 7:00PM. The ZOOM application password will be sent to members.**

## OTHER NEWS

Tom Ruggiero, running unopposed, has been re-elected to a 3 year term as a director of the Nautical Research Guild.

## BATTLESHIP NEW JERSEY:

Closed for January and February 2021 but tours are scheduled through January: Curator's Behind The Scenes Tours, Student Day Aboard Battleship and guided evening tours. Go to the web site: [battleshipnewjersey.org](http://battleshipnewjersey.org)

## QUARTERDECK SUBMISSIONS

Take pictures with your camera or cell phone of a current or past project that you would like to show (maybe you already have). Include a description. Be sure to include the name of your (project, ship), scale, scratch or kit (manufacturer), era (year) and country and anything you would want to say about your project. Just as you would when you fill out the presentation sheet at the meeting or A word about pictures. Make sure they are well lighted, (possibly take them outside) and in focus and no more than 2 or 3. Put them against plain backgrounds if possible - not on your oriental rug. **But workbench shots are welcome.** Send them to the editor:

[rspicer33@aol.com](mailto:rspicer33@aol.com)

## ROTUNDA PICK-UP PROCEEDURE

Jeffery will be in all week to assist.

Park in the circle and call Jeffery at

1-609-226-0218

Jeffery will use his key to get you into the flat lot.

He will pull the post so you can drive to the rotunda and pick up your model.

That's it. NO HASSLE< NO WAITING and it's free!

## 2021 OFFICERS OF THE SOCIETY



President  
Jim Wheeler



Vice President  
Mike Weaver



Treasurer  
Steve Bulova



Secretary  
Joshua Fichmann



## Independence Seaport Museum Introduces New President and CEO



The Independence Seaport Museum announced that Peter Seibert has been named its new President and CEO. Seibert previously served as Executive Director and Chief Executive Officer of the Buffalo Bill Center of the West-Wyomings largest museum. The museum attracts 160,000 visitors annually with its unique exhibits featuring art, natural history, firearms, and native American culture, along with a research library and extensive public programming. Seibert brings an award winning, three decade career from notable institutions including the Colonial Williamsburg Foundation, the Millicent Rogers Museum, the National Council for History and Education, and the Heritage Center of Lancaster, county, Inc.

"I believe it is vital to blend passion for what you do with great content, knowledge and the ability to not only manage, but to be a visionary for an organization."

His specialties are: Fundraising, capital campaigns, strategic planning, project management/capital expansions, publishing (Created a program that brought 15 original works into print), special event fundraising, knowledge of collections and decorative arts, non-profit finance, and entrepreneurial program development.

His books include : "How we lived" focusing on photographs of everyday interiors from 1880 to 1950 (published by Schiffer in 2001) and "Fraternally Yours" that tells the story of fraternal societies in America through their regalia (published spring of 2012).

"(The Independence Seaport Museum) is a great institution and has both extraordinary collections and wonderful Stories to share with everyone, not just in the Philadelphia region, but across the country and around the world," said Seibert. Wether by exhibits, programs, and living history or through the virtual world, we will bring to life the rich and diverse history, art and science of the waterways that surround us. My first task will be to listen and learn from our board, staff, volunteers and the community about their ideas for our future and then work to develop plans to bring those dreams to reality"

He is set to succeed retiring President and CEO, John Brady, and is expected to assume his new role on February 17.

**WELCOME ABOARD FROM THE PHILADELPHIA SHIP MODEL SOCIETY**



# SHOW and TELL

STEVE BULOVA

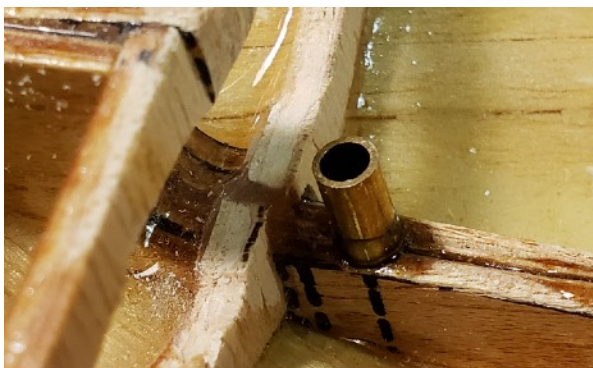
Photos by Steve Bulova



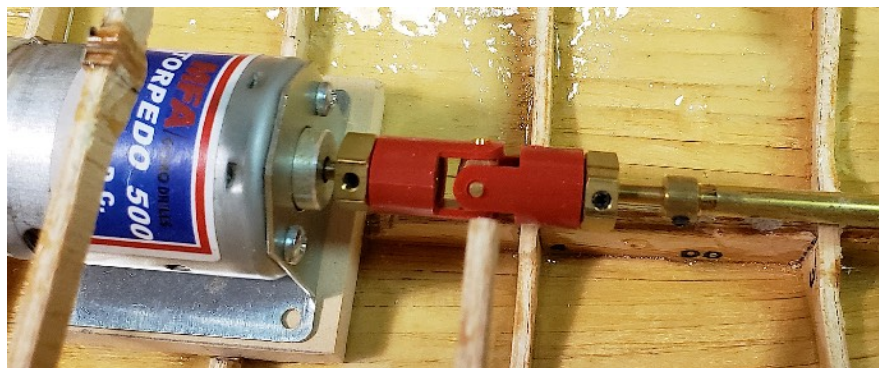
Propeller shaft

ST. CANUTE is a Danish tugboat. Built in 1931 and worked in Odense harbor as a tug, ice-breaker, and fire fighter. It was sold to the British for use in the Clay Ports of Cornwall and is currently moored in the Exeter Maritime Museum in Devonshire, England

The kit is made by Billings Boats. The scale is 1:50 Plank on Frame. Radio controlled. The photos show the hull and installation of the propeller and the rudder tubes and shafts and motor. Steve emphasized careful placement of the components so that they line up properly.



Rudder shaft



Line-up of the motor, coupler and propeller shaft



## SHOW and TELL

### MIKE WEAVER

The start of a scratch built model of the Japanese battleship Kirishima in 1/350 scale. Made of bass wood, plastic card and evergreen plastic, it will be part of a diorama of two battleships that fought each other at Guadalcanal in 1942. The USS Washington engaged the Japanese in the last duel in history, sinking the IJM Kirishima. Pictured is the hull of the ship. The hull will be constructed in bread and butter lamination of each deck, using photostats from the drawings.



Kirishima was a warship of the Japanese Navy during World War I and World War II. Designed by British naval engineer George Thurston, she was the third launched of four Kongo class battlecruisers. Built by Mitsubishi Heavy Industries



Photo by Mike Weaver

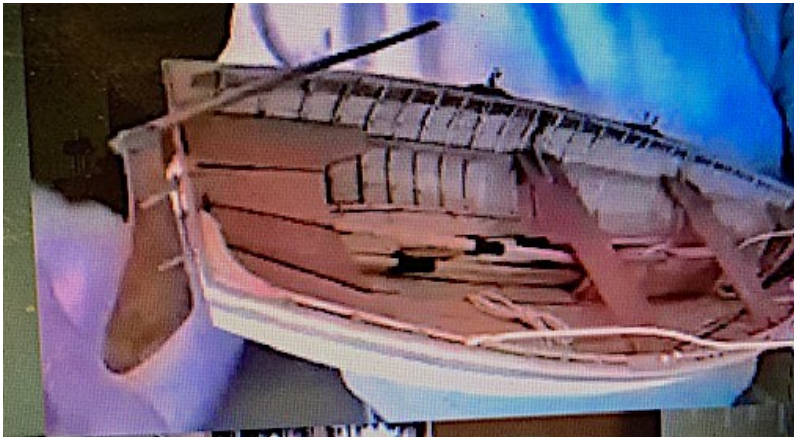
### ELLIOT HOWARD

Photo: Screen Capture



CMS COLOMBO EXPRESS Container ship  
Revell Kit. Scale 1/700. Toughest part of the build? 135 tiny decals!  
Travels from Long Beach CA to Korea, and China. Was, for one year, the largest container ship in the world.





This model is from a kit bought at a white Whale Sale. The ribs were bent wet, put in place and then nailed. The nails were put in from the inside to avoid missing a rib. The hull is lapstrake. Joe says there are two things to love about this model. The floor boards are removable. They had little toggles. When people ask why they are removable, I say "that's where your car keys end up". On the sail is a blue dot that disguises a spot where Joe dropped superglue. So he turned it into design. He pointed out that the boat also has a drop keel and he was pleased with the look of the lapstrakes.

We can't name the kit because the models built "long ago" and the name is forgotten.



## MIKE ZIMMERMAN

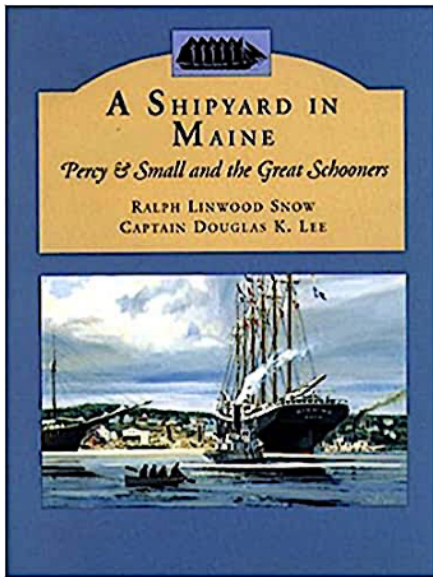


As discussed in the last issue of the Quarterdeck, Mike wants to convert a a Courageous class battlecruiser into England's first aircraft carrier. Here, he has taken the Trumpeter kit, HMS Repulse and started to fabricate the fore deck to replicate HMS Furious but there is much more to do because they eventually leveled the superstructure and installed an entire deck.

Photo: Screen capture



TODD WARDWELL



Todd presented this book, “A SHIPYARD IN MAINE” Percy Small and the Great Schooners. Todd explained that the era of great schooners was the 1900s- so they are not actually “old”. They tried to develop schooners that would compete with coal-burning ships because there weren’t many coal stations all over the world. One of the ships that came out of this was the *Wyoming* and inside the book are the plans for a six masted schooner.

**A book review:** The Bath shipyard of Percy & Small set unraveled records for wooden shipbuilding and the stories of their ships are told here in wonderful detail- - launchings, daring captains, collisions, dismasting, fires, enemy submarines. Maritime enthusiasts and model makers will find a wealth of information here, particularly Doug Lee’s meticulously researched drawings.

Todd also pointed out that BlueJacket Models is going to produce a new model kit called the *Wyoming*. On their Facebook page, you can follow the project. They are actually building a ship model kit.

## Salvaging the tugboat *MISS AIDA* of New York Todd described this recent incident in Delaware Bay



Photos: Screen capture



Towed from N.Y. to Cape Henlopen, *MISS AIDA* took a wave that knocked out three pilot house windows. Three to four hundred gallons of water poured in, causing it to sink 23 ft. outside in the channel of Delaware Bay. The fishermen and scuba divers wanted it left there, however, the owners hired a salvor with a jack-up rig weighing 700-900 tons with a tripod rig with a 400 ton crane. A giant working platform that raised the tugboat. The tug was raised and given back to the owner who made her ready for service. Interestingly, sand scouring while on the bottom cleaned up the tug and made her look better than before she sank.

There are holes in the bottom of Delaware Bay. Had she sunk in one of these, she would have been in 190 feet of water. She narrowly missed going into a hole.

## SHOW & TELL

TOM RUGGIERO Ship Model Society of N.J.

Photos: Screen capture



### MEDWAY LONGBOAT

Circa 1724 by Syren Ship Models  
Scale 1/48. Hull planking is 1/32" thick.  
Because of its scale, Chuck does not intend to rig the boat- will not spend \$400 for case for a row -boat!

The upper photo shows the interior with the mast step and ringbolts in the bottom of the boat. Why? Because this boat was carried aboard ship and these rings were tied to the lifting tackle. Also, a grapple was tied to a ring bolt in the bow. Although Tom does not intend to rig the boat, it will have all the hardware to do so. The iron mount in the bow for the bow sprit can be seen.



BILL BROWN Ship Model Society of N.J.

At our last meeting. Bill Brown, from the Ship Model Society of New Jersey, asked for help in identifying the boats in the photo at right, with the hope of building a model for the new Seaside Heights museum to display. Joe Jordan suggested it was a Cris Craft. It turned out to be a 1929 or 1931, 26 ft. Tri-cockpit Chris Craft.

At the Hampton Roads meeting, Ron Lewis from the Mariner's Museum said that the Museum had acquired all of Chris Craft's materials and plans. Indeed they had. Bill obtained the plans and has started the build.

The model will be built using the lift method for the hull. Bill now has 8 lifts, 1/2" high of poplar ready to be scroll sawed. He had planned to use a 3D Cat tool for some of the parts and take them to Shapeways, but Todd Wardwell offered to help out with that. Bill wishes to thank Joe Jordan and the Hampton Roads Club who helped out a lot - for something that started out as a photograph.





# SHOW & TELL

RYLAND CRAZE Hampton Roads Ship Model Society

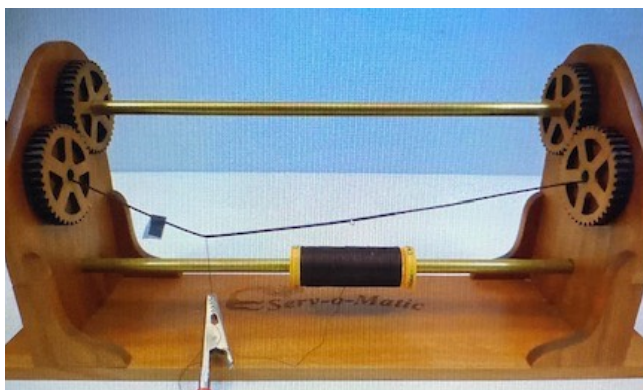
Photos; Screen capture



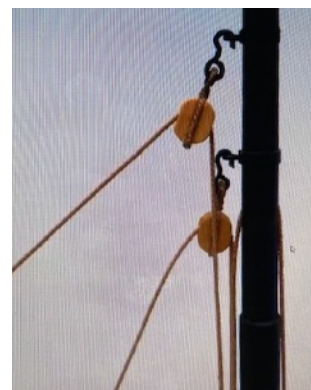
MEDWAY LONGBOAT Syren Ship Model Company. Scale 1/24. The small version of Tom Ruggiero's 1/48 scale. A work in progress, the model still needs shrouds and blocks, fore stays and back stays and the bow sprit and hardware. Ryland used #77 drill and monofilament for nails in the hull planks, coated with Titebond and then cut off. Shown below, he used a Servomatic purchased from Syren Ship Models to serve the shrouds wrapped around the mast. Also shown are the blocks that come with the kit.



Blocks that come with the kit



Servomatic



Blocks and served shrouds on the mast

---

Before you diagnose yourself with depression or low self-esteem,  
try removing social media for a month.





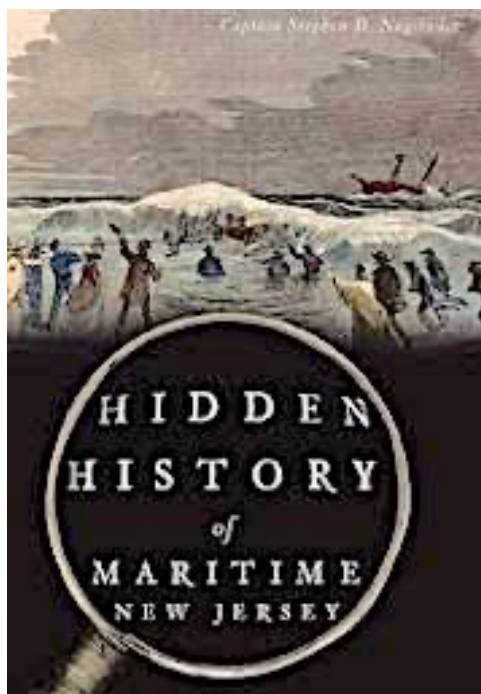
Inside shows the ribs and cap rail in place.

Model Shipways 21ft ENGLISH PINNACE. Scale 1/24. The story here is that Fred acquired the plans and wood and used “punch-outs” from a model completed by Ron Spicer- scrapes really, and used them as templates to build this model. The top picture shows the interior with the cap rail in place. Fred will complete the model using the same technique.

---

## BOOKS

---



### HIDDEN HISTORY of MARITIME NEW JERSEY By Captain Stephen D. Nagiewicz

An estimated three thousand shipwrecks lie off the coast of New Jersey— But these icy waters hold more mysteries than sunken hulls. Ancient arrow heads found on the shoreline of Sandy Hook reveal Native American settlement before the land was flooded by melting glaciers. In 1854, 240 passengers the *NEW ERA* clipper ship met their fate off Deal Beach. Nobody knows what happened to two Hydrogen bombs the United States Air Force lost near Atlantic City in 1957. Lessons from such tragic wrecks and dangerous missteps urged the development of safer ships and the U.S. Coast Guard. Captain

---

### 2021 PSMS OFFICERS & EXECUTIVE BOARD

President: Jim Wheeler [jrwheeler@att.net](mailto:jrwheeler@att.net)  
Vice-President: Mike Weaver [eghannah@gmail.com](mailto:eghannah@gmail.com)  
Secretary: Joshua Fichmann [fichmann@yahoo.com](mailto:fichmann@yahoo.com)  
Treasurer: Steve Bulova [bulovastavel@msn.com](mailto:bulovastavel@msn.com)  
Webmaster: Joshua Fichmann [fichmann@yahoo.com](mailto:fichmann@yahoo.com)  
Editor: Ron Spicer, [rspicer33@aol.com](mailto:rspicer33@aol.com)

Joe Jordan, Representative to ISM [jjvtown@aol.com](mailto:jjvtown@aol.com)

Fred Signor, President, 2020  
Francine Serratore, President 2019  
Todd Wardwell, President 2018  
Jim Wheeler, President 2017  
Fred Signor, President 2016  
Fred Signor, President Emeritus



## LAST CALL! THIS MODEL NEEDS A HOME

**From Joe Jordan**

I have a scale model of an LSD 41 *Whidbey Island* in scale 1/92. It needs a home. I will cheerfully give it to someone who served on her. It is large and heavy. Not going to ship it. It is a builders model made by master model maker Al Seebode in the 1980's. A glass case is included. This model is absolutely first class in workmanship and detail. Will call only. I'm in Lumberton, NJ.

To contact Joe call 609-518-9672 or [jjvtown@aol.com](mailto:jjvtown@aol.com)





# FOR SALE

## USS PERRY BlueJacket Kit

The brig USS Perry was launched at Norfolk in 1843. She was active in suppressing the slave trade, and was active in both the Mexican and Civil Wars.

The kit is  $1/8" = 1"$ .

It has a pre-carved bass-wood. It has laser cut wood parts and includes styrene, brass rod and thread.

the skill level of this kit is marked as high intermediate. She was a beautiful ship.

The price is negotiable.

CONTACT: Ed or Pat Leaf at [pjlebl@comcast.net](mailto:pjlebl@comcast.net) or 609-387-0667



## SHIP SHACK THANKS

Two members of the Society have kept the face of PSMS before the public during these trying times. When the museum has reopened at various times, Joe Jordan and Mike Weaver sat the Shack and interacted with visitors



The Seaport Museum has chosen PSMS to demonstrate ship modeling to the public. We are one of the few exhibits that can respond when asked a question (one other being the boat shop).

To fulfill the responsibility, we need volunteers to sit the shack on weekends.

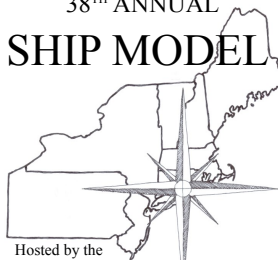
Sadly, the Museum is closed to the public, but this will not be forever, and when things get back to normal and we can again demonstrate ship

## CORRECTED FLYER FOR THE NORTHEAST SHIP MODEL CONFERENCE

Some of you may have received a complementary copy of the USSCMSG newsletter, the Broadside. In it, was a copy of the flyer which announced the change in date for our next Joint Clubs conference to be held on October 2, 2021. However, we should have omitted the registration information, as the registration process is on hold. We anticipate activating the registration link in approximately 5 to 6 months.

Attached is a new temporary flyer which serves to announce the official change in date. Please feel free to share this

### 38<sup>TH</sup> ANNUAL NORTHEAST SHIP MODEL CONFERENCE



Hosted by the  
USS Constitution Model Shipwright Guild

Saturday, October 2, 2021 - 9:00 AM to 3:00 PM

Port'n'Starbord Convention Center

Ocean Beach Park, New London, Connecticut

- Up to 100 detailed models on display from award winning craftsmen and artists
- The opportunity to display & enter your own model(s) in competition judged by fellow conference attendees
- Vendors offering maritime & modeling books, kits, tools & supplies
- Demonstrations of modeling techniques & procedures
- Featured guest speaker is author & USSCMSG member, Rob Napier who will be speaking about aspects of his life in ship modeling
- Continental breakfast & buffet lunch
- Renew old friendships and make new ones

Conference attendees who wish to display models must pre-register. We need to know how many models and their display area requirements in order to allocate enough space when setting up the room.

#### Conference Registration Fees (All fees are per person)

To Be Determined

#### Registration Options

To Be Determined

## PIRATES OF THE MODEL SHIP WORLD



Support legitimate kit makers.

Here is a list of companies that rip off and duplicate kits from reputable manufacturers.

JD Model  
LHQK  
Huasong  
Shi Cheng  
woodenkit (Russian Mfg)

ZHL  
RealTS  
Snail Model  
XinFeng  
Crown

YQ ( YangQihg )  
Master  
CN  
CF  
ship hai

Moxing  
Microcosm  
WN  
SC  
DUJIAOSHOU





# A LOOK BACK AT THE YEAR 2020

- Jan. NE Conference was planned for Saturday, April 25th
- Feb. Announcement of plans for the PSMS 2020 ModelCon
- Mar. Plans announced to restore the ship model John S. Taylor in conjunction with ISM
- Apr. PSMS ModelCon. Joshua Fichmann announces an opening date of Saturday, August 1st, 2020  
April also saw the beginning effects of Covid 19.
- May The Seaport Museum is closed for the foreseeable future.  
PSMS holds it first virtual meeting using the Zoom application. Many thanks to Bobbie Zimmerman.
- June ModelCon is cancelled until summer 2021. Independence Seaport Museum is closed.
- July PSMS celebrated Ed Leaf's 90th birthday!  
Monthly meeting again on Zoom.  
Battleship New Jersey reopens. No guided tours.  
Seaport Museum open 10am to 5pm.
- Aug. Seaport Museum open weekends only 10am to 5pm  
Four members answered the request of the Battleship New Jersey and showed their models on board, following covid restrictions. The participants were Joe Jordan, Jim Wheeler, Joshua Fichmann and Dennis Levitt.
- Sept. Battleship New Jersey closes temporarily.  
John Brady, President and CO of the independence Seaport since 2011, announced his retirement at the end of the year. He has been a friend of PSMS and we will miss his good humor.  
Seaport Rotunda exhibit installed.
- Oct. ModelCon cancelled until summer of 2021.  
Battleship New Jersey reopens on Saturdays and Sundays with self guided tours until December 31st. The ship will be closed for January and February 2021.
- Nov. Holiday Brunch is rescheduled for Sunday, December 12t 2021.  
PSMS and its members donated to the USS Olympia "Go Fund Me" for the restoration of the ship's historic quarterdeck.  
2020 dues were extended to June 2021.
- Dec. The five clubs of the Northeast conference agree that the scheduled date will be Saturday, October 2, 2021.

But, the year ended on an up note. The result of Joe Jordan's "thinking" one Saturday and an email from a young lady named Abby Cember, who took the time to tell us how much the Rotunda show meant to her, validated the feeling that some, if not all have when we exhibit our models. That people will appreciate the skills and dedication it takes to build them, and that, to quote Abby "during this difficult time, visibility of the good stuff" in life, is incomparably precious, even in small doses".

## THE NAUTICAL RESEARCH GUILD

"ADVANCING SHIP MODELING THROUGH RESEARCH"

Annual membership includes our world-renowned quarterly magazine, Nautical Research Journal, which features photographs and articles on ship model building, naval architecture, merchant and naval ship construction, maritime trade, nautical and maritime history, nautical archaeology and maritime art.

Other benefits include discounts on annual conferences, ship modeling seminars, NRG products and juried model competitions which are offered exclusively to Guild members. We hope you will consider joining our ongoing celebration of model ships and maritime history.



For more information contact us at: [www.thenrg.org](http://www.thenrg.org) or call 585 968 8111



Short Sleeved Polo

## PSMS SHIRTS & CAPS WITH EMBROIDERED SOCIETY LOGO

LONG SLEEVED POLO SHIRTS NAVY BLUE

**Men's sizes** small thru 4 XL.

Add \$2.00 for 2XL, \$3.00 for 3XL and \$4.00 for 4 XL

**\$35.00**

**Women's sizes** thru 2X.

**\$35.00**

SHORT SLEEVED POLO SHIRTS, NAVY BLUE

**Men's sizes** small thru 6XL and tall in XL thru 3X

**Women's sizes** small thru 3XL

**\$28.75**

**Hat** 6 panel wave cap, navy with white trim

**\$14.50**

### FOR ORDERS:

Contact Pat Leaf at [pilebl@comcast.net](mailto:pilebl@comcast.net)

**Please be sure of your size**

## THE PHILADELPHIA SHIP MODEL SOCIETY

*Launched January 7, 1931*

The Philadelphia Ship Model Society (PSMS) meets on the first Thursday of each month at the

Independence Seaport Museum (ISM) at 1900 hours.

ISM is located at Penns Landing,

211 South Columbus Boulevard,

Philadelphia, Pennsylvania 19106.

### GUESTS ARE ALWAYS WELCOME

PSMS annual dues are \$35.00 for an INDIVIDUAL MEMBERSHIP

\$40.00 for a FAMILY MEMBERSHIP: Includes MEMBER as well as family with children FREE



## FORTHCOMINGEVENTS

February 4th

March 4th

August

October 2nd

December 12th

**PSMS Zoom Meeting**

**PSMS Zoom Meeting**

**Society Picnic**

**NE conference**

**Holiday Brunch**

ALL DATES ARE SUBJECT TO CHANGE DUE TO THE COV19 VIRUS. AS OF NOW, ALL MONTHLY MEETINGS WILL BE HELD BY ZOOM APPLICATION ON THE INTERNET.

WATCH YOUR EMAIL FOR UPDATES



## THE SSMA JOURNAL

Become a member of SSMA

Annual dues are \$25.00

All membership applications and renewals

should be sent to:

**Heinz Ricken**

**514 Cranford Avenue**



Delaware Valley Chapter meetings are held at The Independence Seaport Museum at Penn's landing on the Delaware River. Membership is \$15 for one year. Contact Steve Lovless at [slldvesshsa@gmail.com](mailto:slldvesshsa@gmail.com) or 215-495-8889 for more details or if you are interested in joining