



Quarterdeck

JANUARY
2020
OUR 89th
YEAR

THE PHILADELPHIA SHIP MODEL SOCIETY.

www.philadelphia ship model society.com

Launched January 7, 1931



Photo: Joe Jordon

SS JOHN S. TAYLOR 1845
175 YEAR OLD MODEL TO
BE RESTORED BY PSMS

THE PSMS ANNUAL HOLIDAY BRUNCH

This years event, held at the Corinthian Yatch Club on the banks of the Delaware in Essington PA was well attended by 44 PSMS members along with the Steamship Historical Society of America members. They were rewarded with beautiful weather, excellent food and relaxing atmosphere.

We want to thank this years MC Joe Jordan and PSMS treasurer Steve Bulova for again handling the details of this years brunch. A big job indeed.

Below are photos of a few of the officers and guests. We look forward to next year



Steve Lovless
Chapter Chairman
Steamship Historical
Society



Mike Flynn
Vice President
Philadelphia Seaport
Museum



Fred Signor
President
Philadelphia Ship Model
Society



Joe Jordan
PSMS Liaison Officer to
The Philadelphia Seaport
Museum



Patrick Dacey
National Brd. of Directors
of the Steamship
Historical Society



Photos: Ron Spicer

JANUARY PRESENTATION

A well presented and illustrated talk about the USS New Jersey was given by Vice-President Jim Wheeler. Jim covered everything from the guns and how to shoot them, to electronics and accommodations. His knowledge comes from a deep interest in the ship itself and his experiences as a docent aboard the ship. For example:

In his zeal to present a picture of shipboard life, Jim, while conducting a tour that consisted of very young children, pointed out that in the dining room of the officers' mess, they were not allowed to use bad words. He found himself at a loss for words when asked " what bad words were they?"

NEW JERSEY (BB-62) was built at the Philadelphia Naval Shipyard, and launched December 7, 1942- Just a year after the Pearl Harbor Attack . She was decommissioned for the 4th and final time on Feb. 8th 1991. She was mothballed for eight years. On November 11th 1999, she arrived at the Philadelphia Naval Shipyard. Since that time, she has been restored, opened and established as an educational museum.

New Jersey earned 9 battle stars for her WWII service, four for the Korean War, two for the Viet Nam war, and four for action in Lebanon and the Persian Gulf region. Among other awards, she received the Navy Commendation for Vietnam service, the Presidential Unit Citation from the Republic of the Philippines and the Presidential Unit Citation from the Republic of Korea. Based on these, New Jersey holds the distinction of being the most decorated Battleship in U.S. history.

Thank you Jim, for an informative presentation.



The 866th meeting of the Philadelphia Ship Model Society (PSMS) was held at the Independence Seaport Museum (ISM) on January 2nd 2020. President Fred Signor called the meeting to order 19:30 and opened with the Pledge of Allegiance.

Business Meeting



Sick Call: Ed Leaf, Pat leaf

Vistors: Ryan Szimanski. Curator - USS New Jersey Museum

White Whale Sale: Provided \$113 in revenue,

Holiday Brunch: Again slated to be at the Corinthian Yatch Club. December 13th 2020.

Motion by Bobbie Zimmerman, seconded by Mike Weaver-favorable vote to re-establish the annual contribution to the ISM from \$450 in the past 2 years, back to \$500.

Activities: Todd Wardwell will try to set a date the Navy Museum.- plans to rent a bus once we have confirming interest from the membership. Members are permitted to bring guests for the trip. A nominal upfront deposit will be required. Details to be refined soon.

Parade of lights was a success.

February Presentation- working on a presenter.

March Presentation: Rogue Waves. Micheal Zimmerman.

Respectfully submitted:

Joshua Fichmann

PSMS OFFICERS & EXECUTIVE BOARD 2019

President: Fred Signor: fsignor@comcast.net

Vice-President: Jim Wheeler, jrwheeler@att.net

Secretary: Joshua Fichmann fichmann@yahoo.com

Treasurer: Steve Bulova bulovastevil@msn.com

Webmaster: Joshua Fichmann fichmann@yahoo.com

Editor: Ron Spicer, rspicer33@aol.com

Joe Jordan, Representative to ISM jjvtown@aol.com

Todd Wardwell, President 2018

Jim Wheeler, President 2017

Fred Signor, President 2016

Tom McElhinney, President 2015

Mike Zimmerman, President 2014

Francine Serratore, President Emeritus



The Ship Shack

The Shack was constructed 10 years ago by Society members Joe Jordon, Josef Messmer, with help from John Otto, wired by George (Jerry) Weigand, All from a design by John Christinzo.

Since then, countless members of our Society - all volunteers, have contributed their time, talent and expertise to keep the Shack open on weekends and special occasions and to greet and demonstrate to the public what ship modeling is and answer questions- "How long did it take to make that?" Many thanks to all who have volunteered.



The Seaport Museum has chosen PSMS to demonstrate ship modeling to the public. We are one of the few exhibits that can respond when asked a question (one other being the boat shop). To fulfill this responsibility, we need volunteers to sit the shack on weekends. See if you can find the time in your schedule. Take a model, meet the public and share our hobby. Support PSMS.

Contact Joe Jordan. jjvtown@aol.com Or sign up on the web: philadelphiaishipmodelsociety.com

**Please remember, one of the reasons we get free parking is because
WE KEEP THE LIGHTS ON IN THE SHACK!**



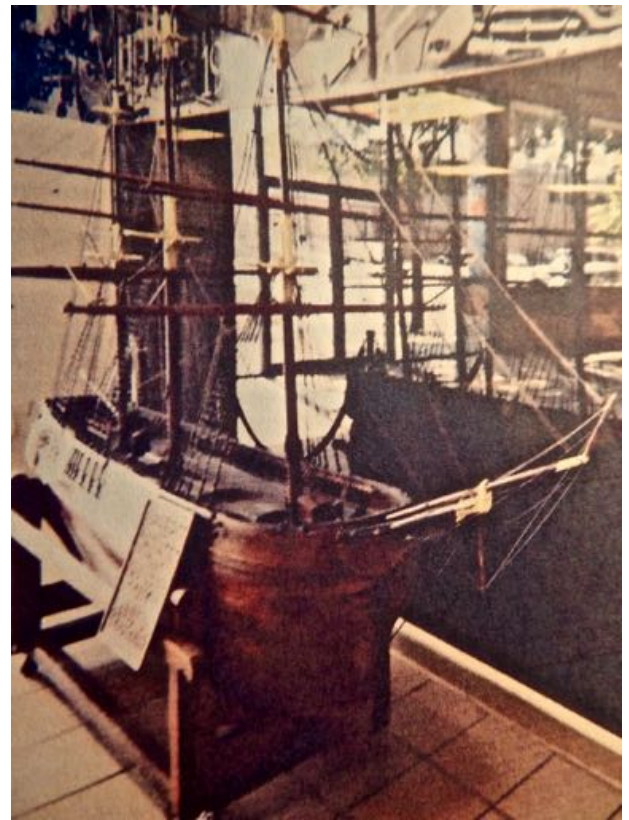
COVER STORY

The John S. Taylor will be cleaned and restored by PSMS members

Do to the eminent relocation of the Philadelphia Seaman's Church Institute, it became known that the large model in the window of its headquarters needed a new home because its new site at the Navy Yard had no room for it. The model, named the John S. Taylor, was built in 1845 by William S. Lauderbach, and was going to be trashed. Hearing this, Joe Jordon and others from the Independence Seaport Museum felt they could not let that happen. The problem was removing it from behind a large glass window. That problem was solved when neighborhood vandals broke the window.

One year ago, December of 2018, Joe Jordon, PSMS Liaison Officer to SM, informed PSMS membership that John Brady, President and Chief Executive Officer had approved our offer to get the "John S. Taylor cleaned, repaired and mounted on the steps leading to the 2nd floor the museum. The model has been in storage at the museum and recently moved to the museum entrance on the first floor (see the cover photo) where the work will be done. PSMS members will clean and restore the model under the direction and supervision of the Museum and Chief curator Craig Bruns.

Photo: Joe Jordon



SHOW and TELL

Photos by Ron Spicer and Joshua Fichmann

MIKE ZIMMERMAN



BATTLESHIP USS NEW JERSEY, Circa 1942

Scale 1/700. Trumpeter plastic kit

Mike brought this model in to compliment the talk. Nicely presented in his signature glass case.

SHOW and TELL

AL CURATALO



MILLENNIUM FALCON. Space ship from Star Wars.
Revell kit. Scale 1/168. Reasonable detail and came with lighting. It's the first time Al tried to weather a model with Acrylic. It took him 8 minutes to build the kit and 6 hours to weather it with an Acrylic wash!

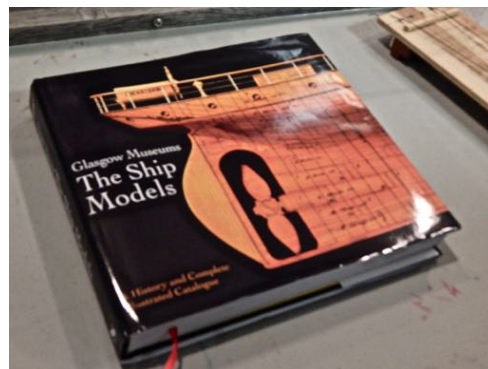
MIKE WEAVER



IOWA CLASS BATTLESHIP. Circa 1945
Scale 1/350. Aurora kit, USA
Rescued model

This was a damaged model given to the shack for repair.
All guns and other issues were replaced with Evergreen plastic and the model refurbished and case mounted.

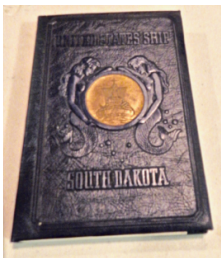
Mike also showed this book from the Glasgow
Museum. Newly in print.



SHOW and TELL

TODD WARDWELL

RMS TITANIC Circa 1912. Academy kit. Scale 1/400. Built to display at the Coast Guard base. Wanted to compare against the SS United States which is 1/3 larger. Purchased aftermarket wood decks the thickness of masking tape- came with photo etched deck chairs. During the build, Todd noted the kit labeled the internal bulkheads to identify the uses of those compartments . Tip: Use EZ Line, typically used by Railroad Modelers for simulating power lines.. Great for rigging. Flexible but retract to original length and tension. It is available in two thread sizes, Fine .010 and heavy .020. Black and white. original size.



Todd also showed a bound and embossed commemorative book sold on the Battleship South Dakota showing scenes of its activities in WWII. Circa 1945.



DENNIS LEVITT



3D LAZER ETCHED GLASS BOTTLE

Dennis displayed a reproduction of the champagne bottle used to launch the Battleship N.J. on May 23, 1943. Approximately 18" high. It is displayed in a specially built glass case on a turntable on the battleship.

Society member Dennis Levitt is Chairman, Curatorial & Military Affairs Committees
Battleship New Jersey Board of Trustees
Battleship New Jersey Museum



SHOW and TELL

JOE JORDON



SCHOONER HARVEY GAMAGE circa 1973. Scale 1/48 Scratch built 98% complete. School ship built in Maine. Homeport: Portland Main. School Ship. Scratch built. Started years ago. Working through how to approach sails and rigging.



Far Left: Joe also displayed the hand made jig that he used to set up the shrouds .

To the right is a "helping hand" set-up holding several completed baggy winkles made from pipe cleaners, which he will use on the model



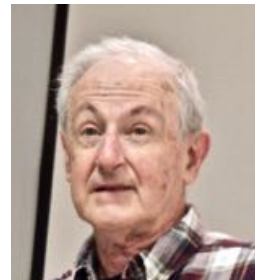
SHOW and TELL

STEVE BULOVA



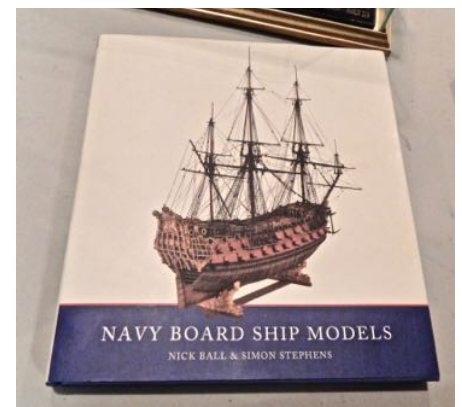
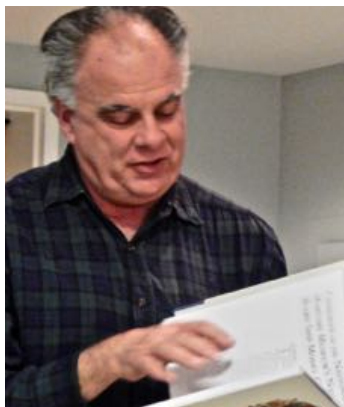
R/C TUGBOAT ANTEO

Panart kit - Italy Scale 1:30. 50% complete. Built from a 1981 model kit. The hull is lemon wood with brass covered bulwarks. Finished interior of the chart house. A work in progress. Discussed having some difficulty identifying all of the bass pieces, However he is creating some very detailed features on the model particularly with the winch.



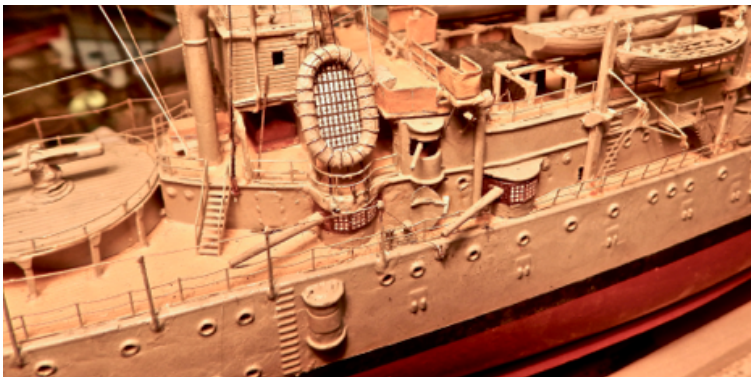
JOHN CHRISTINZO

John presented his latest acquisition. "NAVY BOARD SHIP MODELS, "filled with numerous color photographs that make it "as attractive as it is informative." See page 11 for a full description.



SHOW and TELL

RON SPICER



USS OLYMPIA

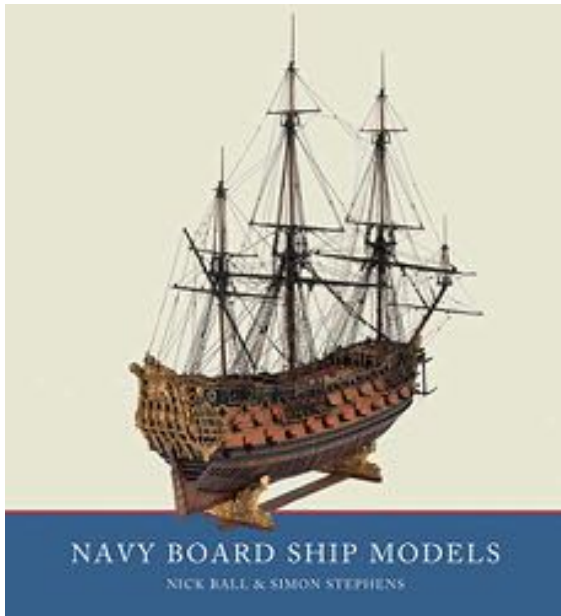
Circa 1921. Scale 1/232

Modified Revell plastic kit. A work in progress.

Configured to look as she did during the ceremony at La Have France on October 24th 1921 before transporting the casket of the Unknown Soldier to Washington, D.C.

Being built at the request of the Philadelphia Seaport Museum for installation in the 3rd Regiment barracks at the Tomb of the Unknown Soldier in Washington D.C. to commemorate the 100th Anniversary of that event.

Ron is honored to be selected for this project.



NAVY BOARD SHIP MODELS

Simon Stephens. Nick Ball

From about the middle of the seventeenth century, the Navy's administrators began to commission models of their ships that were accurately detailed and, for the first time, systematically to scale. These developed a recognized style, which included features like the un-planked lower hull with a simplified pattern of framing that emphasized the shape of the underwater body. Exquisitely crafted, these were always rare and highly prized objects-indeed Samuel Pepys expressed a profound desire to own one- and today they are widely regarded as the acme of the shipmodeler's art. As benefits its subject, *Navy Board Ship Models* is visually striking with numerous color photographs that make it as attractive as it is informative to anyone with an interest in model making or historic ships.

US Naval Institute Press 192 pages

Glasgow Museum's THE SHIP MODELS by Emily Malcom

A History and Complete Catalog

This publication will be the first full catalog of Glasgow museum's internationally important collection of ship models. Almost all of the 676 models, which range from elegant cruise liners to humble Clyde puffers and simple half-hull design models to magnificent display models that were produced by the Clyde shipyards or Glasgow-based shipowners. It is the representation of models from such a distinct geographical area, together with the quality of the models, which makes this collection so exceptional. As well as general chapters about the collection, each of the 676 models have a description and color photograph.

Some of the most famous ships launched on the Clyde are represented, such as the *RMS Queen Elizabeth* and *HMS Hood*, as well as models of historically significant vessels such as the first European passenger steamer *Comet* and the world's first commercial turbine -powered vessel, *King Edward*

A stunning collection of photographs compliments newly researched and in-depth chapters. The book will give readers world-wide a chance to see images of the models, a sense of breadth and importance of the collection and a deepened understanding of the whole history of the ship.

US Naval Institute Press



Cruiser Olympia Commissioning Celebration

February 5, 2020 10 a.m. - 3 p.m.

at the Independence Seaport Museum

Join us to celebrate Cruiser Olympia's birthday. The date commemorates Olympia's commissioning in 1895. To mark the 125th birthday, **enjoy free admission** to the museum and ships, gun salutes, and more.

Save the date for May 9, 2020 for a bigger birthday celebration! Stay tuned for more information

THE PHILADELPHIA SHIP MODEL SOCIETY

Launched January 7, 1931

The Philadelphia Ship Model Society (PSMS) meets on the first Thursday of each month at the

Independence Seaport Museum (ISM) at 1900 hours.

ISM is located at Penns Landing,

211 South Columbus Boulevard,

Philadelphia, Pennsylvania 19106.

GUESTS ARE ALWAYS WELCOME

PSMS annual dues are \$35.00 for an INDIVIDUAL MEMBERSHIP

\$40.00 for a FAMILY MEMBERSHIP: Includes MEMBER as well as family with children FREE



Short Sleeved Polo



PSMS SHIRTS & CAPS WITH EMBROIDERED SOCIETY LOGO

LONG SLEEVED POLO SHIRTS NAVY BLUE

Men's sizes small thru 4 XL.

Add \$2.00 for 2XL, \$3.00 for 3XL and \$4.00 for 4 XL

\$35.00

Women's sizes thru 2X.

\$35.00

SHORT SLEEVED POLO SHIRTS, NAVY BLUE

Men's sizes small thru 6XL and tall in XL thru 3X

Women's sizes small thru 3XL

\$28.75

Hat 6 panel wave cap, navy with white trim

\$14.50

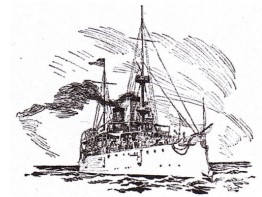
FOR ORDERS:

Contact Pat Leaf at pilebl@comcast.net

Please be sure of your size

FORTHCOMING EVENTS

- February 5th. Cruiser Olympia Commissioning Celebration
10AM to 3PM
- February 6th **PSMS Meeting**
Program to be announced
- March 5th **PSMS Meeting**
Program to be announced
- April 2nd **PSMS Meeting**
Program to be announced
- April 25th **Northeast Ship Model Conference**
New London Connecticut
- May 7th PSMS Meeting
Program to be announced
- June Pennsville N.J.



Delaware Valley Chapter meetings are held at The Independence Seaport Museum at Penn's landing on the Delaware River. Membership is \$15 for one year. Contact Steve Lovless at slldvesshsa@gmail.com or 215-495-8889 for more details or if you are interested in joining



THE SSMA JOURNAL

Become a member of SSMA

Annual dues are \$25.00
All membership applications and renewals should be sent to:

Heinz Ricken
514 Cranford Avenue
Cranford NJ 07016

The USS Constitution Model Shipwright Guild Presents

38th ANNUAL NORTHEAST JOINT CLUBS NORTHEAST SHIP MODEL CONFERENCE AND SHOW

ABOUT THE CONFERENCE

The 38th Northeast Ship Model Conference will be held at the Port'n' Starboard Convention Center at Ocean Beach Park in New London, CT and will be hosted by the USS Constitution Model Shipwright Guild on **Saturday, April 25, 2020 from 9AM - 3pm.**

- * Up to 100 detailed models on display from award winning craftsmen and artists.
- * The opportunity to display and enter your own model (s) in competition judged by fellow conference attendees
- * Vendors offering maritime and modeling books, kits, tools & supplies

- * Demonstrations of modeling Techniques & procedures.
- * Featured guest speaker is author & USSCMSG member, Rob Napier who will be speaking about aspects of his life in ship modeling
- * Continental buffet lunch

Conference attendees who wish to display models must pre-register. We need to know how many models and their display area requirements in order to allocate enough space when setting up the room

FOLLOW THIS LINK TO AN ELECTRONIC REGISTRATION FORM
www.ussemmsg.org/home/nsmc

Attention PSMS Members - A MESSAGE FROM PAT LEIF

This years conference is hosted by the USS Constitution Model Shipwright Guild. **It's our turn next year,** so please keep that in mind for planning purposes. Although we are the farthest from New London/ Mystic, we have always had the most participation after the host club. We hope to continue that tradition.

THIS YEAR

We will provide information on accommodations.

We will need to provide a door prize for the raffle. So if you want to volunteer to provide one, please let us know. The \$25.00 cap is no longer practical, but it should not be expensive.

We also have an obligation to provide a person to give a tabletop demonstration, a modeling technique of interest to the attendees. The sessions begin at 10:00 am and last about an hour and are rather casual, giving time for modelers to visit more than one presentation.

We also provide one, or preferably two, judges for the Jim Roberts award, named for a deceased modeler who was a member of the Ship Model Society of New Jersey.

WE NEED VOLUNTEERS FOR BOTH THE DEMO AND THE JUDGES, AND THE HOST CLUB NEEDS THE INFORMATION AS SOON AS POSSIBLE SO IT CAN BE INCLUDED IN THE INFORMATION PACKETS

