



# Quarterdeck

MARCH  
2019  
OUR 88th  
YEAR

THE PHILADELPHIA SHIP MODEL SOCIETY.

www.philadelphiahipmodelsociety.com

Launched January 7, 1931

## PSMS OFFICERS & EXECUTIVE BOARD

### President:

Francine Serratore

[fserratore@verizon.net](mailto:fserratore@verizon.net)

### Vice-President:

Fred Signor

[fsignor@comcast.net](mailto:fsignor@comcast.net)

### Secretary:

Joshua Fichmann

[fichmann@yahoo.com](mailto:fichmann@yahoo.com)

### Treasurer:

Steve Bulova

[bulovastevel@msn.com](mailto:bulovastevel@msn.com)

### Historian:

John Oddo

[johnmariao.1959@gmail.com](mailto:johnmariao.1959@gmail.com)

### Webmaster:

Joshua Fichmann

[fichmann@yahoo.com](mailto:fichmann@yahoo.com)

### Editor:

Ron Spicer

[rspicer33@aol.com](mailto:rspicer33@aol.com)

### Members-at-Large

John Christinzio

Spence Delin

John Esposito

Joe Gudonis

Joe Jordon

Pat Leaf

Jim Macintyre

Tom Mc Elhinney

John Oddo

Rick Rathgeber

Francine Serratore

Mike Weaver

Jim Wheeler

Todd Wardwell

Mike Zimmerman

### Representatives to ISM

Joe Jordon

Pat & Ed Leaf

Tom McElhinney

The 856th meeting of the Philadelphia Ship Model Society (PSMS) was held at the Independence Seaport museum (ISM) on the seventh day of March, 2019. President Francine Serratore called the meeting to order at 19:00 and opened with the Pledge of Allegiance.

## Minutes of the Meeting



**SICK CALL** Nancy MacIntyre, Kathleen Wheeler, Tom Sheridan's wife Sue.

**Treasurers's report:** In the absence of Steve Bulova, President Serratore presented The Treasurer's report that was approved.

**Secretary's minutes** were approved as printed in the *Quarterdeck*.

**Guests:** Ali and. Enzo Coratolo

## OLD BUSINESS

### Club Outings:

1. **Annapolis Maritime Museum-No update.**
2. **Kalmar Nyckel-** John Bullock-No update
3. **Camden Ship Museum-** Shut down for a month. Todd unable to contact the women in charge.
4. **Navy Museum, Washington D.C.** Todd - Decided on May. Todd to send email for viable dates
5. **Lakehurst Naval Station.** Mike Zimmerman. No update.

**Presentation Committee:** Rick Rathgeber & Fred Signor

### Upcoming Presentations were announced.

April: Rope Making Demonstration- Spence Delin

May: SS Normandy- Captain Peter Orvis

June; Lightship Video- Joshua Fichmann

July: Meeting at the Philadelphia Coast Guard Base- Todd Wardwell

September: Shadow boxes on Queen MaryII.

**New Member Committee:** Nothing to report.

**Website update:** Webmaster Joshua Fichmann continues to rebuild the site. He is working on member pictures to post. His plans for the future are to link the member picture to photos of their ship models. Joshua was congratulated for the work he has done constructing the web site.

**Name tags:** To order a name tag, contact Spence Delin. [sdelin@verizon.net](mailto:sdelin@verizon.net)

## NEW BUSINESS

**Pennsville New Jersey** Saturday, June 1st. Last year we did not have enough table space for our group. This year we are requesting 4 tables. Hopefully, this will give us more room for models.

**Parking:** Discussion about cleaning up the membership listing for parking purposes. A motion was proposed and accepted to send a purge list of non-paying members to ISM. Time frame to be decided.

Specific communication procedures need to be established for new members and reimbursement for first visit parking

**San Juan kit:** Joshua Fichmann attempted to sell the donated San Juan kit on ebay which has become problematic. Josh to follow up on resolution.

The 50/50 winner was Spence Delin. Adjournment- 21:20

Respectfully submitted, Joshua Fichmann, Secretary

March Presentation:

KM/USS Prinz Eugen. Specifications, History and Final End.

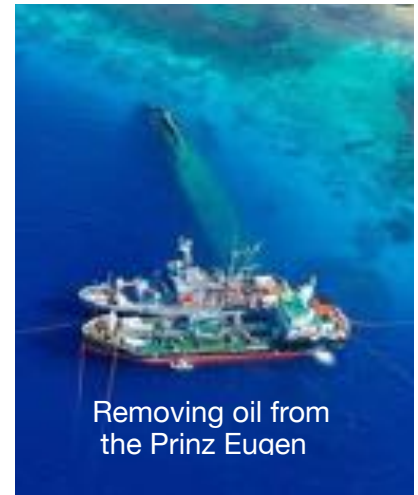


CWO Todd Wardwell presented an illustrated talk of the life of the WWII German Cruiser Prinz Eugen which accompanied Battleship Bismarck in the sinking of the British battleship HMS Hood in May 1941.

Launched in August 1938, displacing 16,000 long tons and eight 8” guns. Awarded to the British as war reparations, she was transferred to the U.S. Her guns were removed at the Philadelphia Navy Yard. Towed to the Pacific, she survived the Bikini Atoll Atomic tests. The irradiated ship was towed to Kwajalein Atoll where a small leak went unrepaired due to the radiation. The ship eventually capsized on December 22nd 1946.

Eventually, through the joint efforts of the U.S. Navy, the U.S. Army and the Federated States of Micronesia, 250,00 gallons of fuel oil were removed.

The ship's bell is currently held at the National museum of the U.S. Navy. Our thanks to Todd for a very interesting and enjoyable presentation.



## The Ship Model Shack

The Seaport Museum has chosen PSMS to demonstrate ship modeling to the public. We are one of the few exhibits that can respond when asked a question (one other being the boat shop). To fulfill this responsibility, we need volunteers to sit the shack on weekends.

See if you can find the time in your schedule.

Take a model, meet the public and share our hobby.

Support PSMS.

Contact Joe Jordan:

[jjvtown@aol.com](mailto:jjvtown@aol.com)

Or sign up on the web:

[philadelphia\\_ship\\_model\\_society.com](http://philadelphia_ship_model_society.com)

# THE PHILADELPHIA SHIP MODEL SOCIETY

Launched January 7, 1931

The Philadelphia Ship Model Society (PSMS) meets on the first Thursday of each month at the Independence Seaport Museum (ISM) at 1900 hours. ISM is located at Penn's landing,

211 South Columbus Boulevard, Philadelphia, Pennsylvania 19106.

**Guests are always welcome!**

PSMS annual dues are \$35.00 for an INDIVIDUAL MEMBERSHIP

\$40.00 for a FAMILY MEMBERSHIP: Includes MEMBER as well as family with children FREE



## PSMS SHIRTS & CAPS WITH EMBROIDERED SOCIETY LOGO

LONG SLEEVED POLO SHIRTS NAVY BLUE

Men's sizes small thru 4 XL.

Add \$2.00 for 2XL, \$3.00 for 3XL and \$4.00 for 4 XL

**\$35.00**

Women's sizes thru 2X.

**\$35.00**

SHORT SLEEVED POLO SHIRTS, NAVY BLUE

Men's sizes small thru 6XL and tall in XL thru 3X

Women's sizes small thru 3XL

**\$28.75**

Hat 6 panel wave cap, navy with white trim

**\$14.50**

### FOR ORDERS:

Contact Pat Leaf at [pjlebl@comcast.net](mailto:pjlebl@comcast.net)



## THE SSMA JOURNAL

Become a member of SSMA

Annual dues are \$25.00

All membership applications and renewals should be sent to:

**Heinz Ricken**

**514 Cranford Avenue  
Cranford NJ 07016**

## FORTHCOMING EVENTS

- March 31st **First State Mini Club 42nd Annual Show and Sale**
- April 11th **PSMS Meeting**  
Program: RopeMaking  
Spence Delin
- April 27th **NE Ship Model Conference**  
New London, Connecticut
- April 13th-17th **Woods Hole Model Boat Show**
- May 2nd **PSMS Meeting**  
Program: SS Normandy  
by Captain Peter Orvis
- May 18th, 19th **13th Model Expo** St Michaels, Md
- May 19th **National Maritime Day, Baltimore, MD**  
Inner Harbor. NS Savannah
- June 1st **Pennsville Farm Show**  
Saturday 10 am to 3 pm
- June 6th **PSMS Meeting**  
Program: Lightships  
by Joshua Fichmann
- July 4th **PSMS Meeting** CWO Todd Wardwell  
Coast Guard base tour
- August 8th **PSMS Meeting**
- September 5th. **PSMS Meeting**  
Program: Shadow boxes on  
Queen Mary II  
Mike Zimmerman

## PARKING

### FREE PARKING FOR MEMBERS

The Walnut St. entrance to the parking lot is not manned after hours. Members should use the Market Street entrance to the parking lot. That entrance is 2 blocks north of the Walnut Street entrance.

### IF YOU HAVE NOT REGISTERED YOUR VEHICLE

Email your name, car make, model and color, along with your license plate number(s). (please include the state as well ). State that you are a member of PSMS. If you use a 2nd car, register that car as well.

Send the information to:

Greg Williams at: [gwilliams@phillyseaport.org](mailto:gwilliams@phillyseaport.org)

Phone 215-413-8679

This policy is for volunteer days, and not for visiting Penn's Landing during non-volunteer hours.

**GUESTS: The Society will pay the parking fee for the first visit only to a Society meeting and must be**

## SHOW & TELL

JIM NUTT



1877 SMUGGLER Fishing schooner. A blue Jacket Kit from 1977.  
Scale 1/48. 30% complete. Carved basswood hull. Jim explained the station markings and making templates. For help he sighted a series from the now defunct *Ships in Scale* magazine on scratch built models and advice from *Bluejacket* on building scuppers and bulwarks. Jim also showed the turntable he uses. As you can see, the model is off to a fine start.

MIKE ZIMMERMAN



HMY BRITANNIA.  
Scale 1/350  
Scratch built waterline model 100% complete. Queen Elizabeth's yacht, now a museum ship in Scotland. Mike and his wife Bobbie visited the yacht a few years ago. Mike enjoys the challenge of scratch building. With this model, Mike used prints from the internet for the cabin window details. As always, the model was presented in his hand made signature glass case.

# SHOW & TELL continued

ED LEAF

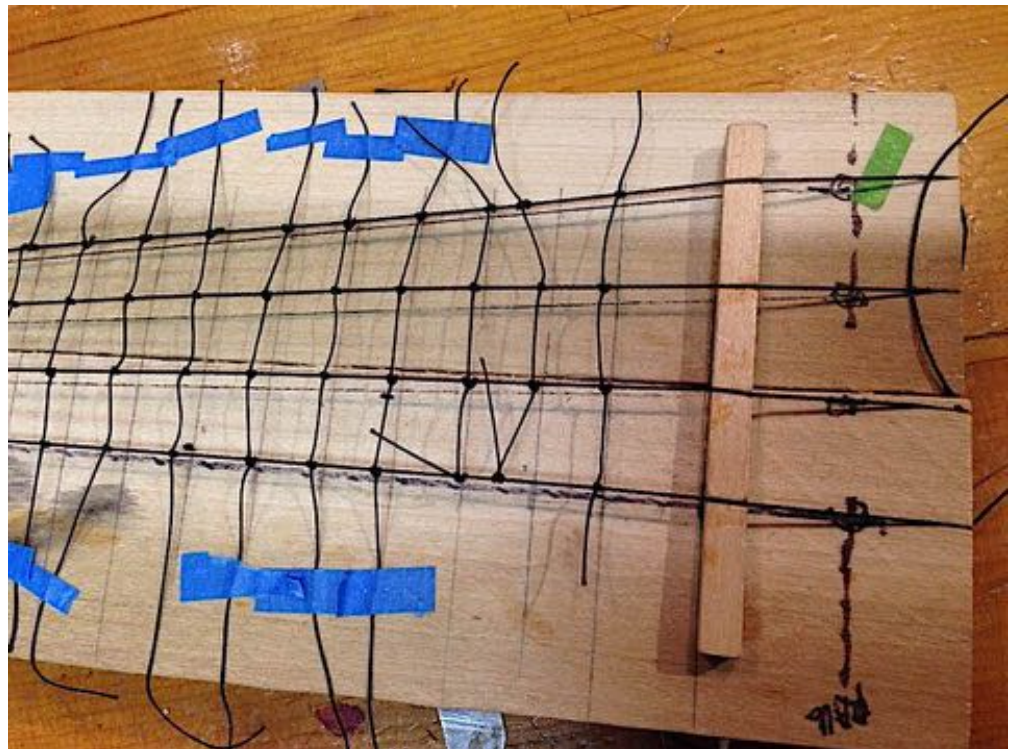


USS ATLANTA (CL-51)  
Scratch built.  
Scale 1/16" = 1'  
Ed finished this model 10 years ago with North Pacific with North Pacific camouflage.  
She was the leadership of the Atlanta class of eight light cruisers.  
The Atlanta was heavily damaged by Japanese and friendly fire in a night action on Nov 13th 1942 during the Naval Battle of Guadalcanal. Sunk on her Captains orders on the afternoon of the same day

JOE JORDAN

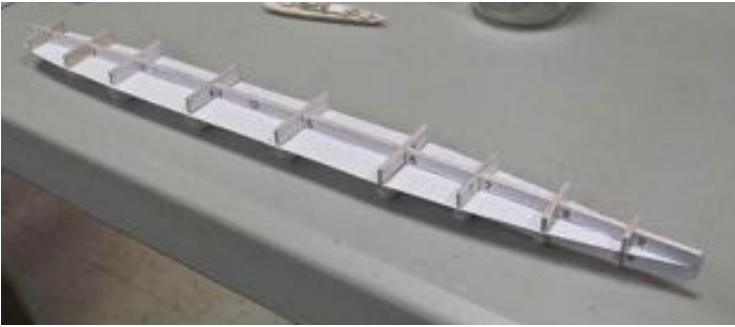


Joe displayed a jig of his own design for stringing the shrouds of a sailing ship. He pointed out the wood strips that keep the thread raised off the board. This makes them easier to tie off.



# SHOW & TELL continued

AL CORATOLO



Polish V-108  
Torpedo Boat Circa 1918  
A work in progress.  
Scratch built of paper and  
balsa wood.  
Built by the Dutch and  
confiscated by Germany in  
WWI and designated V-108.  
Awarded to Poland at the  
end of WW!  
Practice build- preparing for  
the USS Oregon!



ALI CORATOLO



Al's daughter Ali presented  
the USS Constitution in a jar,  
scratch built for a social  
studies project and completed  
in 5-6 hours.

Ali also showed a scratch  
built Fletcher Class destroyer.  
"Social Studies project got  
me into building ships".  
We hope that in the future,  
Ali will continue her  
endeavors in ship models.



MIKE WEAVER



NANTUCKET LIGHT SHIP By Lindberg  
SCALE 1/96 95% complete. This kit was built entirely while  
sitting the Shack at ISM. Mike writes; The Nantucket was one  
the most famous of all lightships in the Coast Guard Service.  
Equipped with powerful lights, fog horns and radio beacon  
signals 24 hours a day. 135 net long with a 30 ft. beam. She  
carried a crew of 24-14 on watch

JOE GUDONIS



TUG/ICE BREAKER *Cleat*, USCGC  
Scale 1/2" = 1Ft.  
65ft small harbor tug. Home port Philadelphia.  
One of a class of 15 tugs used by the U.S Coast Guard. This  
is a project that Joe put aside back in the 1980's.  
Joe soldered the railings with ultra sonic solder.

# SHOW & TELL continued

FRANCINE SERRATORE



## LUPO CLASS FRIGATE

Scale 1/96. 5% complete

Estimated completion- depends on time and availability of parts.

Partially scratch built using balsa, epoxy resin, stainless steel, evergreen/plastruct plastic owl eyes, brass etc.

The hulls from MTB hulls, Gibraltar, from CNC Models in Virginia.

Francine also gave some pointers on RC boat building.

Lupo class frigates were built from 1979 to the present and used by Italy, Venezuela, and Peru. A total of 18 ships were built of which four were built for Iraq, but because of the war, were transferred to the Italian Navy.

The Lupo class is packed with fire power on a small displacement hull as Italy did not intend them for ocean duty, although they did serve there.

RON SPICER



## 18th CENTURY LONGBOAT by Model Shipways

Scale 1/48

Materials- wood and metal.

A model put aside and then finished recently. The feature that has drawn some notice, is the stern horse. (a metal bar transversely mounted just above the deck under the boom to which the sheet block for the sail is connected with a ring that slides from side to side as the boat tacks).

In this case, the original set-up with the kit featured the horse under the tiller handle, as shown on many contemporary museum models. That would make it impossible to tack without removing the tiller handle or unhooking the boom block. The kit designer, Chuck Passaro states that this should not be changed just because we do not understand it.

However, he pointed out on the NRG forum that there are two examples in museums of late 18th century model longboats that show a variation.



This variation is included in the kit.

By bending or bowing the bar above the tiller bar as shown, this allows the sheet block to pass over the horse. However, this change apparently occurred in the last half of the 18th century.

# Pennsville Historical Society Annual "Farm Day" 11 am to 3pm



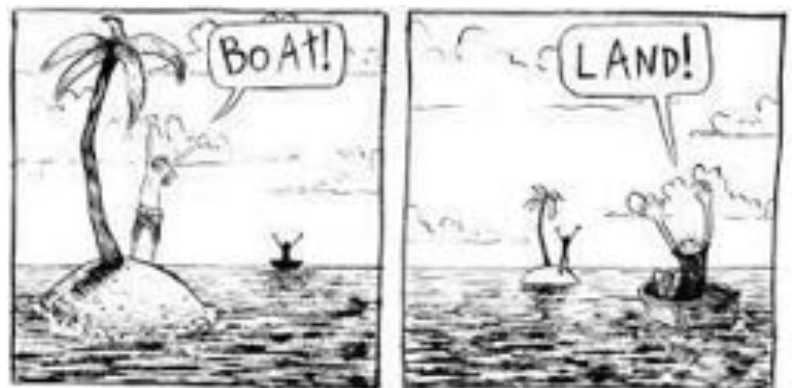
For last several years, PSMS & New Jersey ship Model Society members have participated in this fun event at the Church Landing Farm Museum, 86 Church Landing Rd. in Pennsville N.J. Easy to get to, just down the road and over the Delaware Memorial Bridge, Pennsville lies just south of the end of the bridge. Activities include pony rides and games; demonstrations and crafts, outdoor exhibits, food and music. This surrounds the historic museum building on the Delaware shore line. A family and an old fashioned country atmosphere.

## Backyard geniuses make float plane tugs

These crazy contraptions make do with bland names like "Float Plane Mover" or "Tug". You'll do a double take seeing chopped cars floating on their front wheels, steering a hydraulic jack-cum-cart from behind. From a chopped down pick-up to the family car. It's all do it yourself. There's no factory to order from. Pictures from Pat Bay Float Plane Base near Victoria BC Canada.

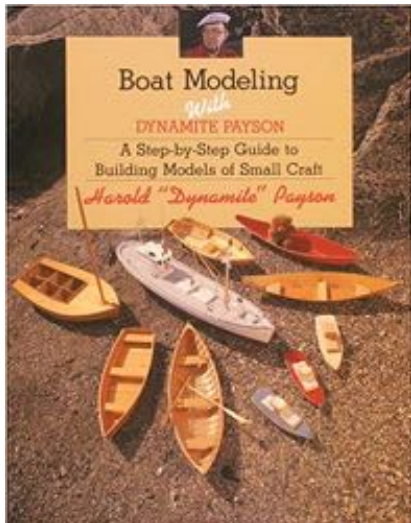


The Delaware Valley Chapter meets at The Independence Seaport Museum at Penn's Landing on the Delaware River, Sunday at 2:30 pm. Membership is \$15 for one year. Contact Chapter Chairman Steve Loveless at [sloveless1959@gmail.com](mailto:sloveless1959@gmail.com) or 215-495-8889 for more details or if you are interested in joining.



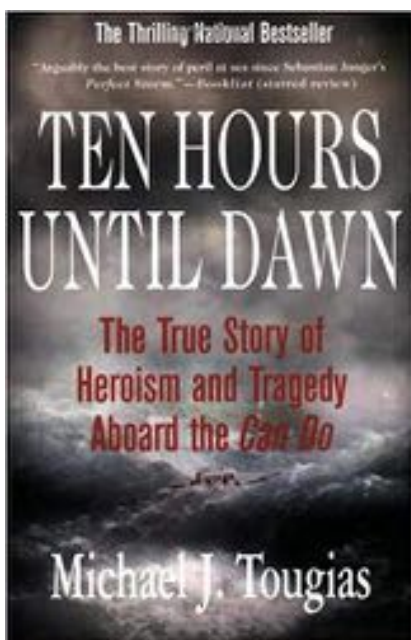


# BOOKS



## BOAT MODELING WITH DYNAMITE PAYSON

Build Seven models based on real boats. The well known author/boat builder applies his instant approach to building tabletop replicas of small rowing and sailing craft suitable for mantle, or mud puddles. He starts with a simple lobster boat anyone can build in an hour and progress through catboats, peapods and there's even a Friendship sloop and a sardine carrier. Dynamite's no-nonsense instructions and step-by-step photographs, coupled with marine artist Doug Alvord's beautiful drawings, guide the readers through each boat's construction from stem to stern. The only modeling book written by a real Maine boatbuilder. He feeds the fantasies and hones the skills of armchair sailors of all ages and degrees of competence, whether as a warm-up to a full-size boatbuilding project, or an end in itself.



## TEN HOURS UNTIL DAWN by Micheal J. Tougias

In the midst of the blizzard of 1978, the tanker *Global Hope* floundered on the shoals in Salem sound off the Massachusetts coast. The Coast Guard heard the mayday calls and immediately dispatched a patrol boat. Within an hour, the Coast Guard boat was in as much trouble as the tanker, having lost its radar, depth finder, and engine power in horrendous seas. Pilot boat Captain Frank Quirk was monitoring the Coast Guard's efforts by radio, when he heard the patrol boat was in jeopardy. He decided to act, gathering his crew of four, he readied his 49 foot steel boat, the *Can do*, and entered the maelstrom of a blizzard.

Using dozens of interviews and audio tapes that recorded every word exchanged between Quirk and the coast guard, Tougias has written a devastating, true account of bravery and death at sea.

## PLANS FOR A NEW BRITANNIA



The navy artist's impression of the 1979 plans for a successor to the Royal Yacht Britannia.

Revealed: Details of secret naval plans for a new Royal Yacht Britannia replacement scuppered by Tony Blair. Full details of the 1979 design have been revealed. Drawn up by naval staff and approved by representatives of the royal family before Tony Blair's Labour Government refused to pay for it.

Prince Phillip backed plans for the Royal Yacht and said it could be used as a training ship for apprentices to teach on everything from catering, to seamanship to everything that goes on a ship. This would allow the much to be funded by a number of Government departments such as Education and Business, Energy and Industry as well as the Ministry of Defence. Up to 100 Tory MPs are backing a campaign for a replacement for Britannia, which was controversially decommissioned 20 years ago

**Connecticut Marine Model Society presents  
The 37th Annual Northeast Joint Clubs**

**SHIP MODEL CONFERENCE AND SHOW  
SATURDAY, APRIL 27, 2019**

**9:00 AM - 3:00 PM**  
( Model Setup 8:15 AM )

**Port'N Starboard Convention Center,  
Ocean Beach Park  
98 Neptune Ave.  
New London, CT  
860-447-3031**

Directions at <http://ocean-beach-park.com/contact/>

**For Additional Information and Registration forms:**

<http://www.ctshipmodels.org>

**IMPORTANT NOTE FROM PAT LEAF.....**

This years conference is hosted by the Connecticut Marine Model Society. **It's our turn next year**, so please keep that in mind for planning purposes. Although we are the farthest from New London/Mystic, we have always had the most participation after the host club. We hope to continue that tradition.

**We will provide information** on accommodations.

**We need to provide a door prize for the raffle.** So if you want to volunteer to provide one, please let me know. The \$25.00 cap is no longer practical, but it should not be expensive.

**We also have an obligation to provide a person** to give a tabletop demonstration, a modeling technique of interest to attendees. The sessions begin at 10:00am and last about an hour and are rather casual, giving time for modelers to visit more than one presentation.

**We also must provide one**, or preferably two, judges for the Jim Roberts award, named for a deceased modeler who was a member of the Ship Model Society of New Jersey. The format has changed to streamline the number of categories, giving judges more time to assess the models.

**WE NEED VOLUNTEERS FOR BOTH THE DEMO AND THE JUDGES, AND THE HOST CLUB NEEDS THE INFORMATION AS SOON AS POSSIBLE SO IT CAN BE INCLUDED IN THE INFORMATION PACKETS. Contact :**

***Pat Leaf, 609 387-0667 or [pjlebl@comcast.net](mailto:pjlebl@comcast.net)***

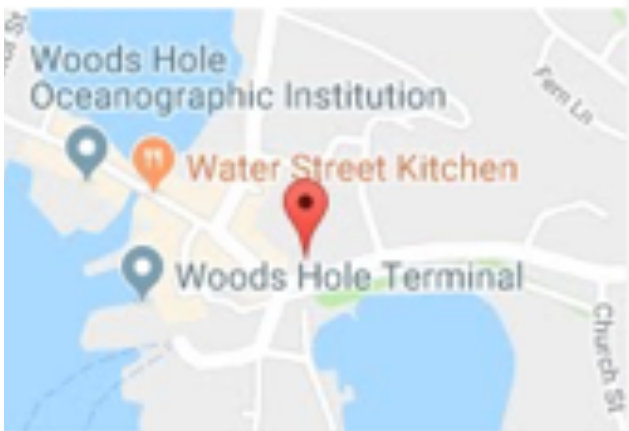
# 2019 WOODS HOLE MODEL BOAT SHOW

**APRIL 13 to 17, 2019**

This is the tenth time the Museum has held this festive event, and it is rumored to be the last of a good run, so if you have been meaning to attend but have never gotten around to it, be sure to come this year. Tickets, which are good for both days, are \$12 for adults, \$5 for kids, or \$25 maximum for nuclear families.

Anyone who builds model boats and who would like to exhibit at this festive event or needs more information, should either call the Museum at 508-548-7270 or email [director@woodsholemuseum.org](mailto:director@woodsholemuseum.org).

The boats will be exhibited in six buildings ashore, stretched from the museum's own building and down the length of Water Street, and in two locations on the water. One of these watery sites is a shallow pool created especially for this weekend, where children are invited to sail models they have built themselves. The other water site is Eel Pond, where radio controlled boats will be sailed and raced in easy view from the drawbridge. These events take place almost constantly through the two days of the show.



**IF YOU WOULD LIKE TO BE AN EXHIBITOR AT THE EVENT CALL 508-548-7270**

## THE NAUTICAL RESEARCH GUILD

"ADVANCING SHIP MODELING THROUGH RESEARCH"

Annual membership includes our world-renowned quarterly magazine, Nautical Research Journal, which features photographs and articles on ship model building, naval architecture, merchant and naval ship construction, maritime trade, nautical and maritime history, nautical archaeology and maritime art.

Other benefits include discounts on annual conferences, ship modeling seminars, NRG products and juried model competitions which are offered exclusively to Guild members. We hope you will consider joining our ongoing celebration of model ships and maritime history.



For more information contact us at: [www.thenrg.org](http://www.thenrg.org) or call 585 968 8111



# 13th Maritime Model Expo May 18 & 19, 2019

Chesapeake Bay Maritime Museum,  
St Michaels, Maryland, [chmm.org](http://chmm.org)

We are pleased to announce the **13th Chesapeake Bay Maritime Museum Model Expo – Saturday, May 18, and Sunday, May 19, 2019 in St. Michaels, Maryland.**

The model activities will be on the Museum grounds near and in the Steamboat Building.

Throughout the two-day event, in a large 40' x 70' x 12" temporary fresh-water pool, radio-controlled live-steam steamboat models will puff-puff-puff through a buoyed obstacle course, electric boats will glide by, and small sail boats will heel to the breeze.

Impressively large R-C sail boats will race and demonstrate their agility, while large R-C power boats will throw a wake in Fogg's Cove on the Museum's waterfront. On Sunday, CBMM's Model Sailing Club will race five-foot R-C skipjack models along CBMM's Fogg's Cove shore.

In the Steamboat Building, Van Lennep Auditorium, members of the Washington Ship Model Society and other highly acclaimed modelers from throughout the region will show and discuss their carefully researched and crafted vessels and demonstrate building techniques.

Children will have the opportunity to build, paint, decorate, and then sail their own small model in a small pool. For \$3.00 they can select and build a sail boat or rubber-band powerboat assisted by a CBMM Model Guild Member.

On Saturday the two-day event is open to the public with general admission. Admission is free for CBMM members. On Sunday the Museum will celebrate Community Day when the entire 18-acre waterfront campus and 12 exhibit buildings will be open to all free of charge.

Exhibitor registration and admission is free. Admission is free to participant's guest and children. – 8' table and two chairs rental is \$15 outside. 6' tables and chairs are free in the auditorium.

Convenient access for unloading and parking. Models can be stored overnight in the secure Museum building.

**This is a save-the-date announcement.  
At a later date [About April 1, 2019.]  
we will send registration and information  
forms. Please plan to enjoy this event!**

