



Quarterdeck

February
2019
OUR 88th
YEAR

THE PHILADELPHIA SHIP MODEL SOCIETY.

www.philadelphiahipmodelociety.com

Launched January 7, 1931

PSMS OFFICERS & EXECUTIVE BOARD

President:

Francine Serratore

fserratore@verizon.net

Vice-President:

Fred Signor

fsignor@comcast.net

Secretary:

Joshua Fichmann

fichmann@yahoo.com

Treasurer:

Steve Bulova

bulovastevil@msn.com

Historian:

John Oddo

johnmariao.1959@gmail.com

Webmaster:

Joshua Fichmann

fichmann@yahoo.com

Editor:

Ron Spicer

rspicer33@aol.com

Members-at-Large

John Christinzio

Spence Delin

John Esposito

Joe Gudonis

Joe Jordon

Pat Leaf

Jim Macintyre

Tom Mc Elhinney

John Oddo

Rick Rathgeber

Francine Serratore

Mike Weaver

Jim Wheeler

Todd Wardwell

Mike Zimmerman

Representatives to ISM

Joe Jordon

Pat & Ed Leaf

Tom McElhinney

The 855th meeting of the Philadelphia Ship Model Society (PSMS) was held at the Independence Seaport museum (ISM) on the seventh day of February, 2019. President Francine Serratore called the meeting to order at 19:09 and opened with the Pledge of Allegiance.

Minutes of the Meeting



SICK CALL Nancy MacIntyre, Kathleen Wheeler, Mike Weaver - on the mend.

Treasurers's report: Steve Bulova presented the Treasurer's report that was approved. Secretary's minutes were approved as printed in the *Quarterdeck*.

OLD BUSINESS

Club Outings: will be discussed at the March meeting. There have been no updates

1. **Annapolis Maritime Museum-** Seeking a range of dates convenient to members for participation- need to ensure we have a good head count to make it worth renting a bus. The same with the **Navy Museum in Washington D.C.**
2. **Kalmar Nyckel-** A range of dates. Spring dates possibly April. Minimal costs for entrance.
3. **Camden Ship Museum-** Parking is limited. No costs to the Society.
4. **Navy Museum, Washington D.C.-** A range of dates.
5. Possible visit to **Lakehurst Naval Station.**

Presentation Committee: Rick Rathgeber & Fred Signor

Upcoming Presentations were announced.

March: USS PRINZ EUGEN- Todd Wardwell

April: Rope Making Demonstration- Spence Delin

May: Normandy- Captain Peter Orvis

June; Lightship Video- Joshua Fichmann

July: Meeting at the Philadelphia Coast Guard Base- Todd Wardwell

New Member Committee:

For new member visits, the Society will reimburse them for parking fees one time only.

When they join the Society, they should be informed of the parking procedure.

Mike Weaver will send a letter to all former members as an encouragement return.

Website: Webmaster Joshua Fichmann continues to rebuild the site. He is working on getting member pictures to post.

Name tags: Anyone who needs a name tag, contact Spence Delin. sdelin@verizon.net

NEW BUSINESS

Holiday Brunch: The date of December 15th has been confirmed by the Corinthian Yacht club

New Members: PSMS welcomed two new members. **Al Coratolo**, and **Brad Faul**.

Membership survey: A survey was handed out to those members present. This is an effort to get some input from the membership. If you were not able to attend the February meeting, look for an email that will be sent out. Please return it to:

Francine Serratore

1007 Spring Avenue

Fort Washington, PA 19034

or email to : fserratore@verizon.net

Pennsville New Jersey Saturday, June 1st. Last year we did not have enough table space for our group. This year we are requesting 4 tables. Hopefully, this will give us more room for models.

February Presentation:

DRILLING EXTREMELY SMALL HOLES. Machinery, methods and procedures.

Fred signor gave an informative and lively talk about small hole drilling. The kind of work he is called on to do as a machinist. Those of us who pictured drilling a 1/16" hole through decking or dowel found out that Fred meant "really small" hole drilling. How about 5 or 10 thousandths of an inch.

That's .005 and .010 !

Fred gave examples of drilling through various materials from hardened steel to plastic. When drilling metal, the speed of the turning drill and the feed of the depth, need to be regulated through "pecking" to prevent breakage and in this kind of work, a CNC milling machine is a necessity for precision.

When drilling plastics, speed should be regulated to prevent the drill bit from melting its way through the material.

Fred brought several small chucks and tools used to accomplish this kind of work and included interesting stories and anecdotes. Our thanks to Fred for an enjoyable presentation.



The Ship Model Shack

The Seaport Museum has chosen PSMS to demonstrate ship modeling to the public. We are one of the few exhibits that can respond when asked a question (one other being the boat shop). To fulfill this responsibility, we need volunteers to sit the shack on weekends.

See if you can find the time in your schedule.

Take a model, meet the public and share our hobby.

Support PSMS.

Contact Joe Jordan:

jjvtown@aol.com

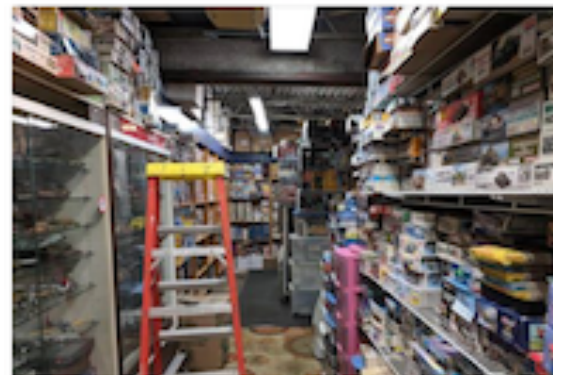
Or sign up on the web:

philadelphiashipmodelsociety.com

TRAVEL TIP

During my travels today, I stumbled across one of those old time model stores we had when we were kids, you know, where they were stocked to the ceiling and you could barely walk. It's the last of the great model shops and will ship world wide, in fact, he was getting a shipment ready to go to Pakistan when I walked in. The place is called Ridgefield Hobby in Ridgefield NJ.

Scott Elley



THE PHILADELPHIA SHIP MODEL SOCIETY

Launched January 7, 1931

The Philadelphia Ship Model Society (PSMS) meets on the first Thursday of each month at the Independence Seaport Museum (ISM) at 1900 hours. ISM is located at Penn's landing,

211 South Columbus Boulevard, Philadelphia, Pennsylvania 19106.

Guests are always welcome!

PSMS annual dues are \$35.00 for an INDIVIDUAL MEMBERSHIP

\$40.00 for a FAMILY MEMBERSHIP: Includes MEMBER as well as family with children FREE



PSMS SHIRTS & CAPS WITH EMBROIDERED SOCIETY LOGO

LONG SLEEVED POLO SHIRTS NAVY BLUE

Men's sizes small thru 4 XL.

Add \$2.00 for 2XL, \$3.00 for 3XL and \$4.00 for 4 XL

\$35.00

Women's sizes thru 2X.

\$35.00

SHORT SLEEVED POLO SHIRTS, NAVY BLUE

Men's sizes small thru 6XL and tall in XL thru 3X

Women's sizes small thru 3XL **\$28.75**

Hat 6 panel wave cap, navy with white trim **\$14.50**

FOR ORDERS:

Contact Pat Leaf at pjlebl@comcast.net



THE SSMA JOURNAL

Become a member of SSMA

Annual dues are \$25.00

All membership applications and renewals should be sent to:

Heinz Ricken
514 Cranford Avenue
Cranford NJ 07016

FORTHCOMING EVENTS

March 7th

PSMS Meeting

Program: KM/USS Prinz Eugen
Todd Wardwell

April 11th

PSMS Meeting

Program: Rope Making
Spence Delin

April 27th

NE Ship Model Conference

May 2nd

PSMS Meeting

Program Normandy
by Captain Peter Orvis

June 1st

Pennsville Farm Show

Saturday 10 am to 3 pm

June 6th

PSMS Meeting

Program: Lightships
by Joshua Fichmann

Parking



NOTICE:

The Walnut St. entrance to the parking lot is not manned after hours. Members should use the Market Street entrance to the parking lot. That entrance is 2 blocks north of the Walnut Street entrance.

IF YOU HAVE NOT REGISTERED YOUR VEHICLE

Email your name, car make, model and color, along with your license plate number(s). (please include the state as well). State that you are a member of PSMS. If you use a 2nd car, register that car as well.

Send the information to:

Greg Williams at: gwilliams@phillyseaport.org
Phone 215-413-8679

This policy is for volunteer days, and not for visiting Penn's Landing during non-volunteer hours.

GUESTS: The Society will pay the parking fee for the first visit only to a Society meeting and must be sponsored by a member.



The Delaware Valley Chapter meets at The Independence Seaport Museum at Penn's Landing on the Delaware River, Sunday at 2:30 pm. Membership is \$15 for one year. Contact Chapter Chairman Steve Loveless at slloveless1959@gmail.com or 215-495-8889 for more details or if you are interested in joining.

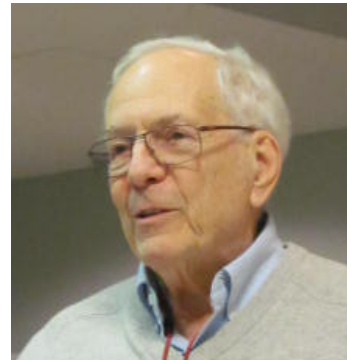
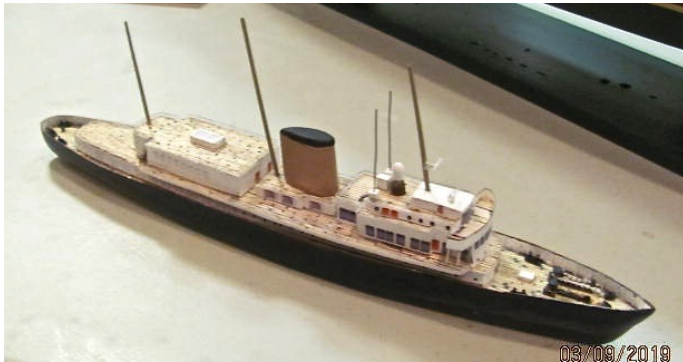
SHOW & TELL

JIM NUTT



Model Trailways 19th Century wood and metal Doctor's buggy kit from Model Expo. Scale 1:12 Jim presented the next step of his carriage, which was to scratch build period kerosene lamps. He decided instead he decided to use a laser cut lantern kit from Syren Co. designed by Chuck Passaro.

MIKE ZIMMERMANN



Presented a scratch built waterline model of HMV Britannia based off photos of his visit to not as a museum ship. Built at 1/350 scale with a solid hull using the bread and butter construction method. The model was built with left over spare parts from other projects. Windows are printed on photo paper. he recently finished the railing. Remaining are 6 lifeboats and some rigging. Mike had fun visiting the ship and building the model.

JERRY GATES



Brought a schooner display hull about 40" long. This hull was given to him from someone who passed away. Purchased about 50 years ago, it used to be hung upside down in their home at Long Beach Island. Individually planked with nails.

SHOW & TELL continued

ED LEAF



Ed leaf showed two paper models. Scale unknown but each about 7 to 8 inches long.

Above

A 1914 Rolls Royce Silver Ghost used by Lenin to travel from Finland to Russia. Modified for snow use.

Above right:

A WWI Russian tank.

Turret inscription means "For the Fatherland"



JOE GUDONIS

Presented a display of photos of the New Zealand Kay Zed One racing boat.

He also presented a display of hatbands that were part of sailors uniform hats.

Joe stated that he acquired this group from his father.

Certain ships of note were:

RNS Majestic- White Star Line- North Atlantic

RMS Corona- 1904
"Green Goddess"

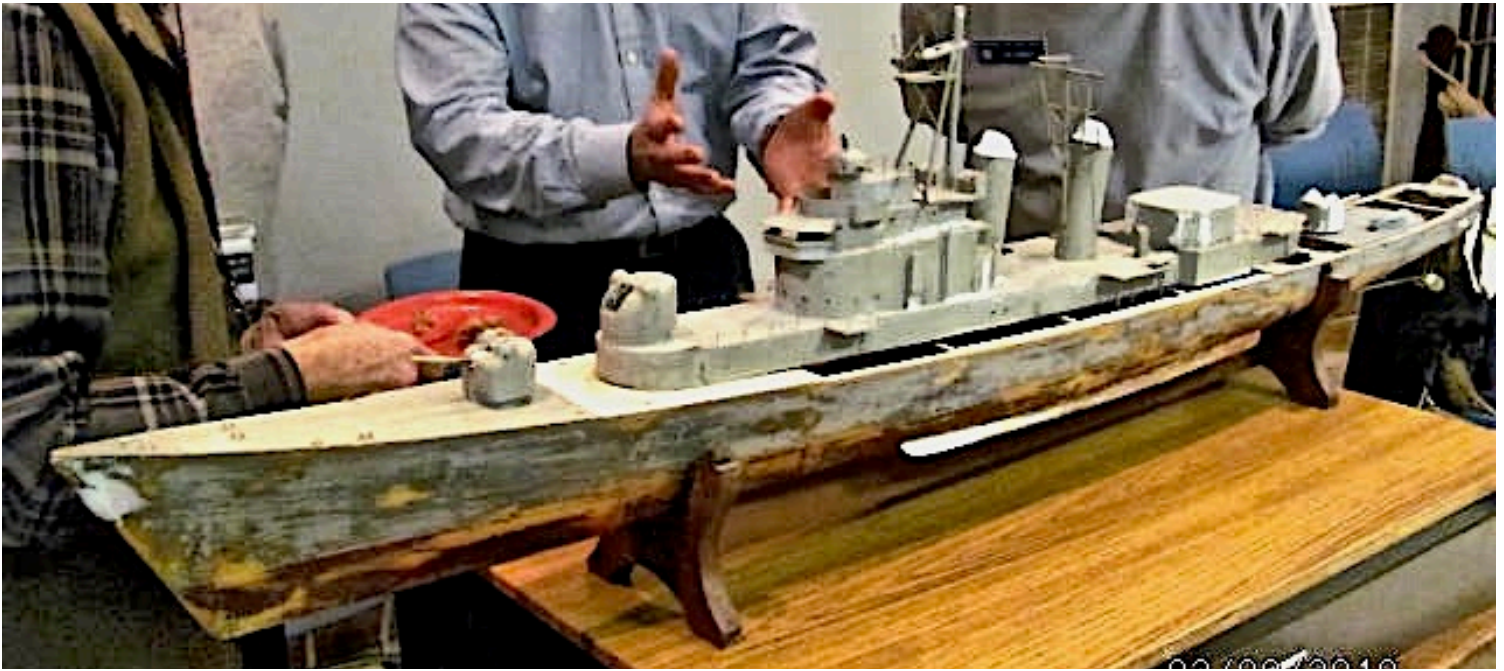
RMS Olympic- White Star Line. (The first of the 3 liners built. Sailing in the opposite direction from the Titanic

RMS Mauwa- WWI troop carrier from Australia.



SHOW & TELL continued

BRAD FAUL



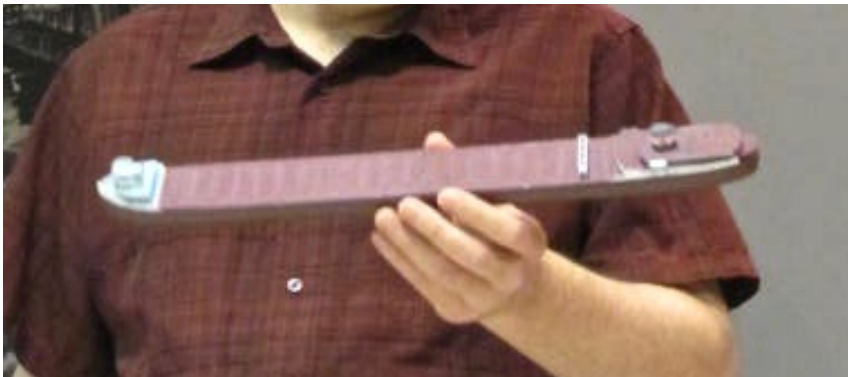
Presented a scratch-built Destroyer: USS Wilkenson, intended to be an RC model. It was started back in early 70's by WWII Army vet Walter Crowers, a neighbor of Brad. After Mr Crowers passed, his widow offered the model to Brad who admired the model for some years as a kid living next store.

The USS Wilkenson was a Michener Class vessel- Cold War Era and was one of four ships of this class built. She was a Destroyer Leader and Submarine Hunter and was one of the first equipped with A Dash as one of the first UVA's that were capable of carrying a Nuclear tipped torpedo. The Drone was never used, only tested.

The model is approximately 1/87 HO Scale, has a balsa hull with fiberglass coating. Brad has run the model a few times and it has developed a few leaks which he is working on repairing. Since then he's been working to fine tune the running gear by experimenting with various motor and propeller configurations, including having some propellers made to scale by a local modeler. Some of his goals for the model are to "Make the turrets rotate and have it look good."



AL CORATOLO



Al presented a paper waterline model of the ore carrier Edmund Fitzgerald. It was a paper model that was part of a diorama. Al reinforced the hull with balsa wood. This is his first paper ship and he is pleased with the result. He suggests that the paper be lacquer coated before assembly.

SHOW & TELL continued

MIKE WEAVER

Presented a scratch built 1900's British protected cruiser water line model. During a battle, three of these ships were sunk trying to rescue each other while a German warship used them as target practice



KURT FAUST

Presented a scratch-built hull from plans of the USS Garcia, a single propeller anti-submarine frigate, in its initial stages of construction. Utilizing a plank on frame configuration, he has been working on planking the hull and is experimenting with using light weight balsa sheets to cover the frames. Next step will be to fiberglass the hull and hopes to have it running by summer.

DONATION



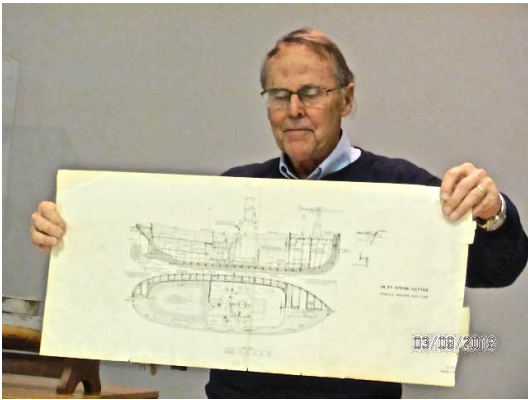
PSMS received 3 ship model kits from Waldo A.R.Tulk to be used by the Society. The value of the kits was estimated to be \$350.00. The kits were priced by the Society and were sold at the meeting.

1. San Juan Nepomuccino. Retail \$450. Sold \$125.00.
2. Rattlesnake. Retail \$300.00. Sold \$100.
3. La Toulonnaise 1823. Retail ? Sold 50.00

All proceeds went to the Society

SHOW & TELL continued

SPENCE DELIN



Presented his model of a typical 28 ft. steam launch carried by large 1900's US Navy warships. Plans are from the book *Standard Boats of the U.S. Navy*. This is a scratch-built model from plans utilizing scale of 1/2 " to the ft. The hulls carved from a solid block of wood which will be planked. It will be mounted on on a wood base with 4 1/8" long brass tubes placed in the four quarters of the hull. To accomplish this, Spence had to first locate where the holes were to be drilled in the base. Then, stabilizing the model on blocks positioned over the mount, drill up through those mount holes into the model. The model is 10% complete.

JOE JORDAN



Joe showed the completed TYPHOON, a Dumas kit he put aside 22 years ago. His progress has been chronicled in previous issues of the *Quarterdeck*. Unhappy with it, he stripped it to the bare wood and refinished it with 14 coats of polyurethane varnish, made and replaced most of the fittings, plated all of the fittings himself and installed LED lighting. His attention to detail is unsurpassed. He considers it semi-scratch built. With this model, Joe showed the skills that few possess. Radio controlled, It's hard to believe, but he actually puts this boat in the water!

SHOW & TELL continued

FRANCINE SERRATORE



Francine presented the USS Baltimore, scratch built. Scale 1/96. She has been doing a heavy rework. New decking is completed. Outer deck glued to the hull to improve appearance and watertight integrity. Modern temporary guns were replaced with old style guns. Blue Jacket ventilators are replacing hand made vents Ship's boats and racks will be added along with doors, hatches, anchors etc.

USS Baltimore, part of the new navy was with Dewey's squadron at the battle of Manila Bay and did Convoy duty in WWI. Her 2nd claim to fame was that she was present at Pearl Harbor on 12/7/41. Towed to sea and scuttled in 1942,

2019 WOODS HOLE MODEL BOAT

APRIL 13 to 17, 2019

**The 12th biennial Woods Hole Historical Museum's Model Boat Show
will be held on Patriot's Day Weekend, April 13 and 14, 20019**

This celebration of small ships is an opportunity to view exquisite workmanship and meet model boat craftsmen from all over New England and beyond. Some of the vessels are so small they can fit inside a light bulb, most are much larger, ranging from 12 in. to 12 ft. Most have fine detail. Some are stationary, exhibited inside; others go into the water. Some are powered only by the wind, or steered yet radio control

IF YOU WOULD LIKE TO BE AN EXHIBITOR AT THE EVENT CALL 508-548-7270

CRAZY ABOUT OCEAN LINERS



In November of 2018, Jim Wheeler sent out an email asking if there was anyone interested in building a model of HMS Olympic. He was referring to an email from Mrs Antoniette Raucci of New Jersey, saying she needed a completed model for her 9 yr. old son Logan who, when informed that his request for the model could not be fulfilled, responded that he wasn't worried, "Santa's elves will make one for me".

Dennis Levitt generously offered to buy the model if someone would make it. Ron Spicer responded that he would build it.

Dennis delivered the model on January 24th in the name of the Philadelphia Ship Model Society to a grateful family. As you can see at left, Logan is crazy about ocean liners and his room is decorated accordingly.

THE STEAMSHIP HISTORICAL SOCIETY

The Delaware Valley Chapter of The Steamship Society of America Will be meeting on Sunday, Feb. 24th at 2:00 PM in the Education Room at the Independence Seaport Museum. The program will feature chapter member Bob Byerly reminiscing about his many trips on the Hudson River Day Liner Alexander Hamilton. Slides of the Hamilton and the trip will be shown as well a display of Hudson River Day line post cards, advertisements and Brochures. Refreshments will be served. Contact Chapter chairman Steve Loveless at slidvcsshsa@gmail.com or [215-7912671](tel:215-7912671) to let us know you will be coming. We need an accurate count for the refreshments.

If anyone has a model of the Alexander Hamilton or any other Hudson River Day line steamboat, they are welcome to bring it



The Nautical Research Guild: A reprint of the July 9, 2018 article (edited)

Seaways Ships in Scale Magazine has Ceased Publication

The loss of *Ships in Scale* has left a void for the beginning and intermediate ship modeler. In response to this news, the NRG Board of Directors has decided to make some changes to the *Journal* to offer former *Ships in Scale* subscribers somewhere to continue their journey into model ship building. First, the *Journal* will be expanded to provide more room for ship modeling articles for all skill levels. Secondly, one article started, but not completed in *Ships in Scale* will be continued in the *Journal* to ensure this valuable series is completed. Installments already published in *Ships in Scale* will be posted on the NRG website.

The guild has also purchased the intellectual property of Seaways Publishing. The CD sets for *Ships in Scale* and *Model Ship Builder* will be available as well as plans published by Seaways Publishing.

THE NAUTICAL RESEARCH GUILD

‘ADVANCING SHIP MODELING THROUGH RESEARCH’

For more information contact us at www.then.org or call 585 968 8111

A Chinese-built replica of the Titanic will set sail from Dubai in 2022



The \$500 million ship, which will be built in China, is set to make its maiden voyage from Dubai to Southampton, U.K. in 2022. The Titanic II will then embark on global routes, starting with the exact path of the original ship, traveling from Southampton to New York, minus the small detour to the ocean bottom, presumably. Making things safer for this journey at least: enough life boats, a hull that's welded rather than riveted, and a period of global warming that is melting all the icebergs. (Some scientists argue however that melting ice has led to [more dangerous](#) icebergs, not fewer. Tickets aren't on sale yet, so there is no word yet as to whether they are selling round trip tickets or learning from experience and starting with one-way fares.

The plans for the replica liner were first revealed in April 2012 by Australian mining billionaire Clive Palmer. Though previously expected to set sail in late 2016, work on the project was halted in 2015 following a dispute with a Chinese conglomerate over royalties. Credit Melissa Locker

**Connecticut Marine Model Society presents
The 37th Annual Northeast Joint Clubs**

SHIP MODEL CONFERENCE AND SHOW

SATURDAY, APRIL 27, 2019

9:00 AM - 3:00 PM

(Model Setup 8:15 AM)

**Port'N Starboard Convention Center,
Ocean Beach ,Park
98 Neptune Ave.
New London, CT**

860-447-3031

Directions at <http://ocean-beach-park.com/contact/>

For Additional Information and Registrations Forms:

<http://www.ctshipmodels.org>

(Limited Admission to Model Exhibit Only Available at the Door for \$5)

