



Quarterdeck

NOVEMBER
2018
OUR 87th
YEAR

THE PHILADELPHIA SHIP MODEL SOCIETY.

www.philadelphiahipmodelsociety.com

Launched January 7, 1931

PSMS OFFICERS & EXECUTIVE BOARD

President:

CWO Tod Wardwell
highlanderburial@gmail.com

Vice-President:

Francine Serratore
fserratore@verizon.net

Secretary:

John Bullock
jbullock@gmail.com

Treasurer:

Steve Bulova
bulovastev@msn.com

Historian:

John Oddo
johnmariao.1959@gmail.com

Webmaster:

Todd Wardwell

Editor:

Ron Spicer
rspicer33@aol.com

Members-at-Large

John Christinzio
Spence Delin
John Esposito
Joe Gudonis
Joe Jordon
Pat Leaf
Jim Macintyre
Tom Mc Ilhinney
John Oddo
Rick Rathgeber
Francine Serratore
Mike Weaver
Jim Wheeler
Mike Zimmerman

Representatives to ISM

Joe Jordon
Pat & Ed Leaf
Tom McElhinney

The 857th meeting of the Philadelphia Ship Model Society was held at the Independence Seaport Museum on November 1st 2018. President Todd Wardwell called the meeting to order at 19:15 hours. The meeting commenced with the Pledge of Allegiance.

MINUTES OF THE MEETING

♥ **SICK CALL.** Kathleen Wheeler. Recovering from an operation

OLD BUSINESS

Washington Navy Yard Trip: postponed until next spring. Being in Washington during election time is not a good idea. Also, it is hoped the re-schedule will provide time to get more sign-ups. The goal is 40. The trip is open to Members and guests (Friends or relatives). The cost will be determined by the number of sign-ups.

Name tags: Anyone in need of a name tag, contact Spence Delin at sdelin@verizon.net

Seaman's Church Donations: Bring donations to the December meeting. (See the announcement on page 4.)

The Ship Shack: Volunteers needed for weekends. Contact Joe Jordan at jjvtown@aol.com

Holiday Brunch the Corinthian Yatch Club: Send your reservation to Treasurer Steve Bulova. \$30.00 per person. **To meet our commitment, the Society needs 60 reservations. Reservations are due no later than December 3rd.**

NEW BUSINESS

2019 Dues are due: \$35.00 per person, \$40.00 per family. The treasurer suggests that both the payment for the Corinthian Yatch Club Brunch and the 2019 Dues could be combined into one check, made out to PSMS and sent to: Steve Bulova
4631 Larchwood Ave.
Philadelphia, PA
19143

A PROBLEM THAT DOES NOT EXIST

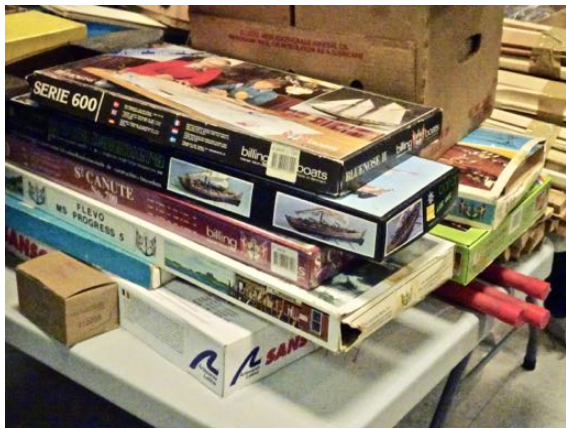
The slate of nominees for club officers is: **Francine Serratore:** President, **Vice-President:** [anonymous](#), **John Bullock:** Secretary, **Steve Bulova,** Treasurer, **Ron Spicer,** Newsletter Editor.

Reprinted from the November 2017 newsletter

Vice-President is the job that scares members away because it has come to include the responsibility for programs. **There is no such requirement in the rules.** Article V, Section 2 provides for the appointment of a program chairman, who in turn appoints a committee. Perhaps the Vice President could chair that committee, but it is not necessary for him to have full responsibility. *Pat Leaf*

December 6th meeting

There will not be a program or a show and tell. the annual election will be held and it will be a meet and greet with refreshments and a holiday theme.



A WHALE OF AN AUCTION!

The donations to this years auction were unprecedented. From models new in the box to tools, wood, model paint and other items. Once again Todd Wardwell was auctioneer and again entertained the crowd with his wit and personality.

Among the models and model parts, were engine room gauges and a ship pulley, as well as an abundant supply of wood including mixed bundles of walnut, mahogany, and cherry. Also blocks and strips of basswood, and much more. There was certainly something for everybody and at times the bidding was brisk. Thanks to all who participated.



All proceeds go to PSMS to fund activities of the Society. Several models that did not meet a minimum bid were held to be put on ebay.

It should be noted that, as always, Ed and Pat Leaf were there with the setup of coffee pot, paper plates, napkins and the cooler with soda, that encourages the socializing at break time. Thanks also to all who contributed the food.



The Ship Model Shack

The Seaport Museum has chosen PSMS to demonstrate ship modeling to the public. We are one of the few exhibits that can respond when asked a question (one other being the boat shop). To fulfill this responsibility, we need volunteers to sit the shack on weekends. See if you can find the time in your schedule. Take a model, meet the public and share our hobby. Support PSMS.

Contact Joe Jordan:

jjvtown@aol.com

Or sign up on the web:

philadelphia_ship_model_society.com



Parking

NOTICE:

The Walnut St. entrance to the parking lot is not manned after hours. Members should use the Market Street entrance to the parking lot. That entrance is 2 blocks north of the Walnut Street entrance.

IF YOU HAVE NOT REGISTERED YOUR VEHICLE

Email your name, car make, model and color, along with your license plate number(s). (please include the state as well). State that you are a member of PSMS. If you use a 2nd car, register that car as well.

Send the information to:

Greg Williams at: gwilliams@phillyseaport.org

Phone 215-413-8679

This policy is for volunteer days, and not for visiting Penn's Landing during non-volunteer hours.



PSMS TO SHOW LIGHTED MODELS AT THE ISM

This year the Parade of Lights will be held on Saturday , December 8, 2018. We are invited to show our boats at the Shack at the Seaport Museum and maybe get a preview of the new River Alive display area. We will show lighted models near the shack as we did before. The Shack will be decorated for the Holidays with lights that we have on hand. Plan to arrive early afternoon and stay til 6 PM or so.

If you plan to participate, please contact :

jjvtown@aol.com



VETERANS DAY NOVEMBER 11TH

*Centennial
commemoration of the
end of World War I on
November 11, 1918. The
theme for the 2018*

*Veterans Day Poster is :
"THE WAR TO END ALL
WARS" and features a poppy
and barbed wire.*





PSMS OFFERS TO RESTORE THE JOHN S. TAYLOR

Excerpts from a letter sent to Craig Bruns, Chief Curator at the Philadelphia Seaport Museum
Hi Craig:

I would like to offer a few thoughts regarding the Model “*John S. Taylor*” made in 1845. This masterfully made model was rescued from the the Seaman’s Christian Church when their new location was too small to accommodate it.

The model needs a lot of cleaning with curatorially agreed materials and supplies and a well-lighted secure space. How much is done and what repairs should be made will be determined by the curator. The Philadelphia Ship Model Society will offer qualified people to do the work on site.

The work would be done with the understanding that the model will be publicly displayed at ISM. Notation of the contribution of our membership included in the display.

A walk-around suggests the best safe location is on the broad staircase railing overlooking the new exhibit area. A wrought iron mounting base would be made in-house.

As Liaison Officer for PSMS, I will present the current thinking to our membership, and gather the sense of the Club as to how many dollars we would be willing to spend for the mounting of the model.

I must say that I am personally gratified that this example of marine art has been preserved. It is a tremendous relief to see the *John S Taylor* in good hands.

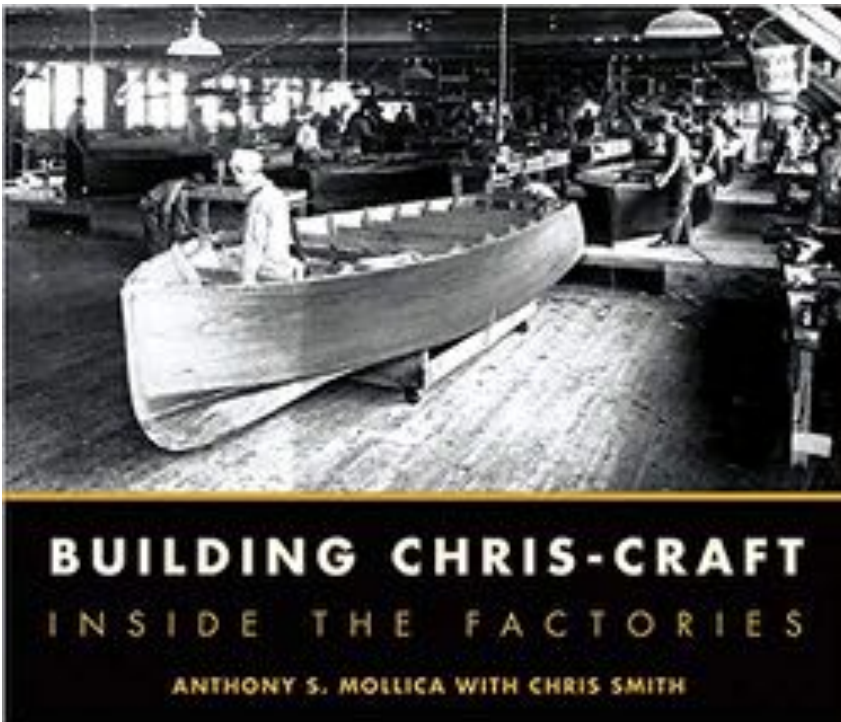
Regards,

Joseph W. Jordan,

Member , Philadelphia Ship Model Society



BOOKS



BUILDING CHRIS-CRAFT

INSIDE THE FACTORIES

Anthony S. Mollica with Chris Smith

For more than a half century,Chris-craft reigned supreme in the world of motor-boating. This market dominance was due in no small part to the design and construction techniques employed in the company’s studios and factory floors.

The book examines the company’s design and production heritage, looking at Chris-Craft’s considerable accomplishments in the context of key competitors and industrial trends in general.

High quality archival images take readers inside the factories in Algonac, Holland, Cadillac, Michigan, Salisbury Maryland, Chattanooga, Tennessee and Caruthersville, Missouri.

FORTHCOMING EVENTS

Nov. 11th	Veterans Day
Nov. 22nd.	Thanksgiving
Dec. 6th	PSMS Meeting No program Meet & Greet
Dec. 7th	Pearl Harbor Remembrance
Dec. 8th	PSMS displays lighted ships models at ISM Parade of Lights
Dec 16th.	Holiday Brunch Corinthian Yacht Club
Dec. 31	Fire works at ISM



The Delaware Valley Chapter meets at The Independence Seaport Museum at Penn's Landing on the Delaware River, Sunday at 2:30 pm. Membership is \$15 for one year. Contact Chapter Chairman Steve Loveless at sloveless1959@gmail.com or 215-495-8889 for more details or if you are interested in joining.



PSMS SHIRTS & CAPS WITH EMBROIDERED SOCIETY LOGO

LONG SLEEVED POLO SHIRTS NAVY BLUE

Men's sizes small thru 4 XL.

Add \$2.00 for 2XL, \$3.00 for 3XL and \$4.00 for 4 XL

\$35.00

Women's sizes thru 2X.

\$35.00

SHORT SLEEVED POLO SHIRTS, NAVY BLUE

Men's sizes small thru 6XL and tall in XL thru 3X

Women's sizes small thru 3XL

\$28.75

Hat 6 panel wave cap, navy with white trim

\$14.50

FOR ORDERS:

Contact Pat Leaf at pjlebl@comcast.net

THE SSMA JOURNAL

Become a member of SSMA

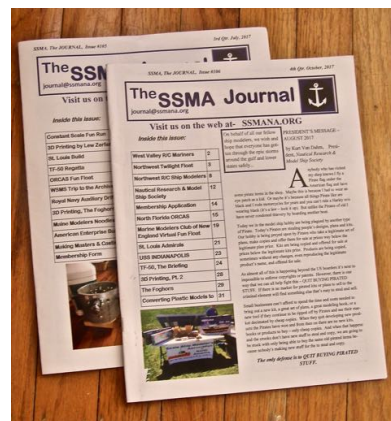
Annual dues are \$25.00

All membership applications and renewals

should be sent to:

Heinz Ricken

**514 Cranford Avenue
Cranford NJ 07016**



THE PHILADELPHIA SHIP MODEL SOCIETY

Launched January 7, 1931

The Philadelphia Ship Model Society (PSMS) meets on the first Thursday of each month at the Independence Seaport Museum (ISM) at 1900 hours. ISM is located at Penn's landing, 211 South Columbus Boulevard, Philadelphia, Pennsylvania 19106. **Guests are always welcome!**

PSMS annual dues are \$35.00 for an INDIVIDUAL MEMBERSHIP

\$40.00 for a FAMILY MEMBERSHIP: Includes MEMBER as well as family with children FREE

SEAMAN'S CHURCH INSTITUTE OF PHILADELPHIA AND SOUTH JERSEY

IT'S DITTY BAG SEASON!

Ditty Bag Wish List - PSMS will be collecting these items at our **December** meetings for the Seaman's Church Institute of Philadelphia and South Jersey.

They need our support and these items are needed! Thank you!

Hats & Scarves (dark colors only) Razors, Cans of Shave Cream (7 to 11 oz), Combs, Heavy Socks, Toothpaste (4 to 6 oz), Work Gloves, Deodorant Sticks, Mini Sewing Kits, Nail Clippers, Pens and Writing Paper with Envelopes.



MARATHON READING OF MOBY DICK

NOVEL READ FOR 24 HOURS

Hosted jointly by the Rosenbach Museum and Philadelphia Seaport Museums, Herman Melville's entire novel was read from the deck of the schooner Diligence by volunteers over a 24 hr period.

After a fund raiser on the fantail of the Cruiser Olympia, the reading began at 5:30 pm Friday and continued until the book was finished at about 8pm on Saturday. Concurrently, Queequeg's Chowder and Lobster Soup from local restaurants was available in the Boat Shop from 11:30 am to 2:30 in the afternoon.



PSMS PARTICIPATES IN NAVY DAY ON THE OLYMPIA

Four members participated in a display of model ships on the Cruiser USS Olympia on Saturday, October 27th. The display was more history oriented with period ships, than actually building models as in the shack.

Mike Weaver displayed 4 models, Joe Jordon displayed 2 and Jim Wheeler displayed a very large model of the German light Cruiser Emden. Mike Weaver also displayed a nice layout of modeling tools.

Greg Williams, from the Seaport Museum supplied 2 large pizzas and arranged special parking directly across from the Becuna. Easy in, easy out.

RAYE MONTAGUE. NAVY PIONEER

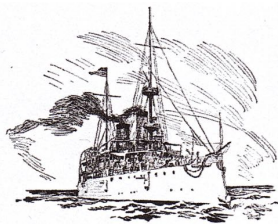


Raye Montague, 83, a trail blazing black woman from Arkansas who revolutionized the way the U.S. Navy designed ships, has died of congestive heart failure in Little Rock Arkansas.

Ms. Montague, who had a 33-year career in the Navy, developed a computer program that created rough drafts of ship specifications. The program allowed the Navy to cut the time it took to build a ship's draft design from two years to 18 hours.

Raye Montague, was a civilian engineer. A 2017 article on the navy's website noted she was known as the Navy's secret weapon.

Ms Montague, who was awarded the The Meritorious Civilian Service Award by the Navy, moved home in 2006. She was inducted into the Arkansas Women's Hall of Fame this year. AP



The Secret Language of Ships



A ship's paint job isn't primarily about aesthetics or branding. When you see this two-toned effect, the paint closer to the waterline is often of a different chemical composition, one that holds up better to immersion. Even more than preventing corrosion, a hull coating that may be under water has to guard against the slim, algae, and barnacles that cling fast to a friendly hull.

What's so bad about shellfish and microorganisms hitching a ride? The crusting of barnacles, mussels, and bacteria- called biofouling- creates drag, slowing ship and upping their fuel intake by as much as 40%. Foreign species can also invade the ecosystems and outcompete native species for food and space. To remove the hitchhikers, the ship goes into dry dock for scraping or power washing.

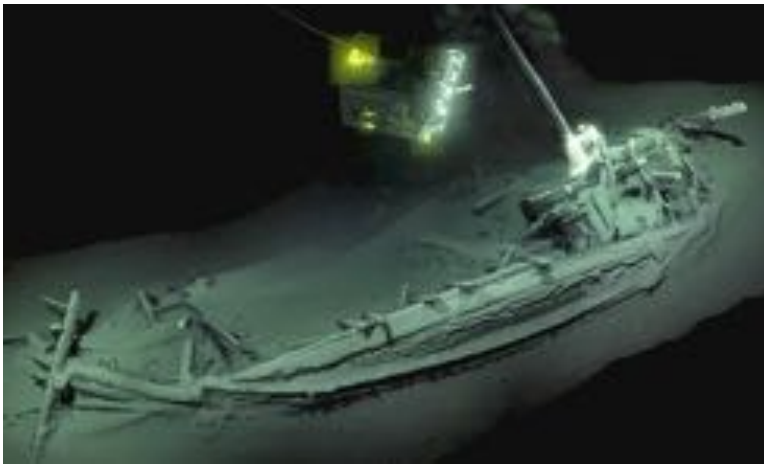
Enter preventative measures, like antifouling paint. Early iterations contained copper and even arsenic, which effectively poisoned the organisms but also the water. Modern antifouling coatings are more eco-friendly, and there are also new systems being floated, such as creating a hull surface that mimics shark skin, since, unlike some whales, sharks don't tend to harbor barnacles.

New Containership 'NATORI' Sports Odd Looking Bow



You may recognize the design because it has also been used in 2 car carriers, the city of St. Petersburg and City of Rotterdam, but Natori marks the first time it has been used on a containership owned by the Japanese shipping Company Imo Lines. It's innovative if not somewhat odd looking forward bridge and semi-spherical bow design was developed to improve wind resistance. In the case of the two car carriers, the design has been said to cut wind resistance by as much as 50%, adding fuel savings and lowering emissions.

WORLD'S OLDEST INTACT SHIPWRECK DISCOVERED IN THE BLACK SEA



Archaeologists have found what they believe to be the world's oldest intact shipwreck at the bottom of the Black sea where it appears to have lain undisturbed for more than 2,400 years.

The 23-metre (75ft) vessel, thought to be ancient, was discovered with its mast, rudders and rowing benches all present and correct just over a mile below the surface. A lack of oxygen at that depth preserved it, the researchers said.

"A ship surviving in tact from the classical world, lying in over 2 km of water, is something I would never have believed possible," said Professor Jon Adams, the principal investigator with the Black Sea Maritime Archaeology Project (MAP), the team that made the find. This will change our understanding of shipbuilding and seafaring in the ancient world".

The ship is believed to have been a trading vessel, a type that researchers say has only been previously seen "on the side of ancient Greek pottery such as the 'Siren Vase' in the British Museum".

That work, which dates from about the same period depicts a similar vessel bearing Odysseus past the sirens, with the Homeric hero lashed to the mast to resist their songs. The team reportedly said they intend to leave the vessel where it was found, but added that a small piece had been carbon dated by the University of Southampton and claimed the results confirmed it as the oldest intact shipwreck known to mankind.

It was among 60 shipwrecks found by the international team maritime archaeologists, scientists and marine surveyors, which has been on a three-year mission to explore the depths of the Black Sea to gain a better understanding of the impact of prehistoric sea-level changes.

They said the finds varied in age from a 17th-century Cossack raiding fleet, through Roman trading vessels, complete with amphora, to a complete ship from the classical period".

The team made a two-hour film that will be shown at



The 'Siren Vase' in the British museum: the shipwreck is believed to be a vessel similar to that shown bearing Odysseus.

THE PHILADELPHIA SHIP MODEL SOCIETY

Requests Your Presence at the



HOLIDAY BRUNCH BUFFET

at the

**Corinthian Yacht Club of Philadelphia
300 West Second Street
Essington, PA 19029**

**Sunday, December 16, 2018
11:30AM - 2:30pm**

**Adults \$30.00
Children \$15.00
(tax and Gratuity included)
Cash bar**

BRUNCH BUFFET MENU

Tossed Garden. Salad - w/2 Dressings
Grilled Vegetables with Balsamic Vinaigrette
Fresh Fruit Salad

Eggs Benedict, Scrambled Egg bar, Breakfast Sausage
and Bacon

Oven Roasted Potatoes, French Toast w/ Maple Syrup
Assorted Bagels & Pastries

Smoked Salmon with Traditional Accompaniments

Carved Flank Steak with Horseradish Sauce
Boneless Chicken Breast with Champagne Sauce
Honey Glazed Salmon



R.S.V.P.

**Reservation Deadline:
December 4, 2018**

Checks for \$30.00 per person payable to: PSMS
% Steve Bulova

DIRECTIONS:

195 South or North, Exit on 420 South,
Cross the Industrial Highway to Dead End,
Turn Right ON 2nd St., CYCOP is on the
left after Gov. Prinz Park

From the Officers and Executive Board of PSMS



THE NAUTICAL RESEARCH GUILD

"ADVANCING SHIP MODELING THROUGH RESEARCH"

Annual membership includes our world-renowned quarterly magazine, Nautical Research Journal, which features photographs and articles on ship model building, naval architecture, merchant and naval ship construction, maritime trade, nautical and maritime history, nautical archaeology and maritime art.

Other benefits include discounts on annual conferences, ship modeling seminars, NRG products and juried model competitions which are offered exclusively to Guild members. We hope you will consider joining our ongoing celebration of model ships and maritime history.



For more information contact us at: www.thenrg.org or call 585 968 8111