



Quarterdeck

APRIL
2018
OUR 87th
YEAR

PHILADELPHIA SHIP MODEL SOCIETY

www.philadelphia ship model society.com

Launched January 7, 1931

PSMS OFFICERS & EXECUTIVE BOARD

President:

CWO Tod Wardwell

wardwellav@gmail.com

Vice-President:

Francine Serratore

FSerratori@verizon.net

Secretary

John Bullock

jfbullock@gmail.com

Treasurer:

Steve Bulova

bulovastev@msn.com

Historian:

John Oddo

johnmariao1959@gmail.com

Editor

Ron spicer

rspicer33@aol.com

Webmaster:

Todd Wardwell

Members-at-Large

John Christinzio

Spence Delin

John Esposito

Joe Gudonis

Joe Jordan

Pat Leaf

Jim MacIntyre

Tom McElhinney

Josef Messmer

John Oddo

Rick Rathgeber

Francine Serratore

Mike Weaver

Jim Wheeler

Mike Zimmerman

Representatives to ISM

Joe Jordon

Pat & Ed Leaf

Tom McElhinney

The 847th meeting of the Philadelphia Ship Model Society (PSMS) was held at the Independence Seaport Museum (ISM) on the 5th day of April. Vice-President Francine Serratore called the meeting to order at 19:05 and opened with the Pledge of Allegiance.

MINUTES OF THE MEETING

OLD BUSINESS

Name Tags: Spence Delin will have them made. Contact sdelin@verizon.net

December Holiday Brunch: The December Holiday Brunch date of 12/16/18 has been formalized. Please mark your calendars.

Also: The Gazella Christmas function was moved to the Penn Club in Bensalem on the Delaware River. Joe Gudonis reports that it was a nice event and the cost was \$30.00.

Dr Jim Nutt reminded the membership about the First State Mini Club Show and Sale in April. Clarion hotel "The Belle" 1612 Dupont Hwy. New Castle, DE See the ad in this issue.

Club Outings: Francine called for volunteers to contact these proposed sites.

1 - **Annapolis Maritime Museum at the Naval Academy.** Follow up by Todd to contact Don Pruitt

2 - **Kalmar Nyckel** To visit the ship in Wilmington Delaware. Todd will follow-up.

3 - **The Camden Ship Museum.**

4 - **The Philadelphia Seaport Museum storage and archives area tour.** Joe Jordon

5 - **David Taylor Model Basin** is one of the largest ship model basins- test facilities for the development of ship design.

Northeast Ship Model Conference , April 28th. Consisting of 5 ship model groups. This year sponsored by The New Jersey Ship Model Society / held in New London CT. A reminder to send in your registration sheet found on page 9 of this issue. To date, we have 17 members attending. As in the past, we will meet on Friday evening for dinner at Go Fish Restaurant in Mystic, Conn. Saturday is the conference at the Port & Starboard Convention Center in New London. Pat Leaf reminded the club members that it will be our turn to host the conference in 2020.

Joe Jordon- "SHIP SHACK" As always, volunteers are needed. It is very important that we, as members participate and represent the club with the Independence Seaport Museum.

NEW BUSINESS

Retiring: An award of appreciation was presented by Ron Spicer to **Ed Leaf**. Ed is retiring after more than 30 years as the Society treasurer. Thank you Ed.

Coast Day Sept 15th Several tables will be needed.

The Annual Regatta has been cancelled for this year. Two alternate sites were suggested for a regatta or fun float for RC models. Roosevelt park in South Philadelphia or Laurel pond in N.J.

Tall Ships Exhibit. May 25th to 28th. Joe Jordon will look into club participation.

Meeting adjourned at 9:20pm Respectfully submitted, John bullock, Secretary

APRIL PROGRAM

FUTURE FRIGATE FOR THE U.S. NAVY

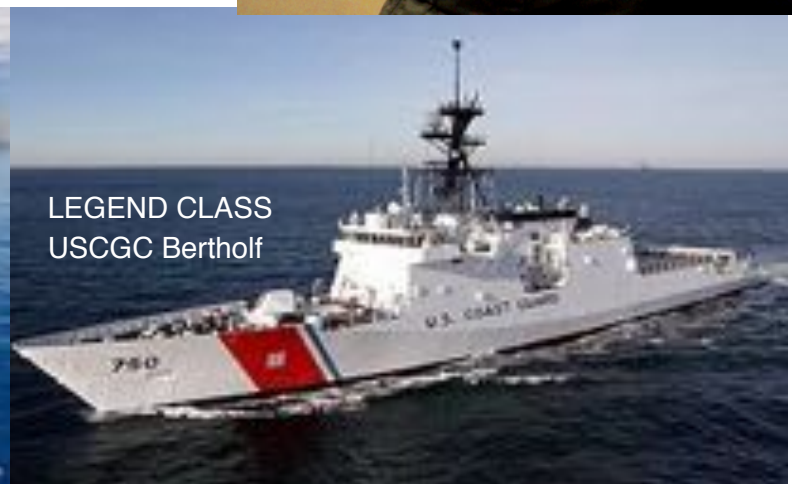
Vice- President Francine Serratores' presentation on the Navy Frigate program was detailed and showed that she really knew her subject.

Do to inadequate existing frigates, the U.S. Navy needs a new design that can fulfill the fleet tasks assigned to the roll of the Frigate. The problem is that due to the rise of the Chinese Navy and the rejuvenation of the Russian Navy, the U.S.Navy does not have the 2 years that it would take to design a Frigate from scratch. Therefore, the Navy is considering using designs from other countries such as France, Italy, or Denmark.

With the help of Dr. Mike Zimmerman on the projector, Francine listed 7 contenders: multi purpose Littoral combat ships.

- 1.FREEDOM CLASS - overgrown torpedo boat
2. INDEPENDENCE CLASS - made of aluminum modules
3. LEGEND CLASS
4. F100 Spanish design
5. STANFLEX Danish design
6. TYPE 26 Global Class
7. FREMM Bregamini

Of the three contenders for the final design, two are pictured below.



LOST WW2 AIRCRAFT CARRIER FOUND AFTER 76 YEARS

USS Lexington was found two miles down in the Coral Sea about 800 km off Australia's east coast. The ship was lost in the Battle of the Coral Sea, fought with Japan from May 4-8 1942. More than 200 crew members died in the fighting. The U.S.Navy confirmed the ship had been discovered by a search team led by Microsoft co-founder Paul Allen.

Pictures showed the wreck to be well preserved. The discovery of the Lexington, along with 11 of its 35 aircraft, was made by Mr. Allen's company Vulcan.





SICK CALL

Tom McElhinney- doing well.

THE PHILADELPHIA SHIP MODEL SOCIETY

Launched January 7, 1931

The Philadelphia Ship Model Society (PSMS) meets on the first Thursday of each month at the Independence Seaport museum (ISM) at 1900 hours.

ISM is located at Penn's Landing,
211 South Columbus Boulevard, Philadelphia, Pennsylvania, 19106.

Guests are always welcome!

PARKING

Parking is free at the Parking Authority Municipal Lot located directly in front of the Seaport Museum for members attending the monthly meetings. You must enter at the Walnut street entrance. A volunteer member will be there to monitor the gate between 6:15 and 6:50 PM. Those arriving earlier or later should temporarily park to the side in the oval and go to the front desk and obtain a parking pass, which, after use must immediately be returned to the front desk. **Remember! You must have your license number on file with ISM in order to get special parking. If you use more than one auto, send both license plate numbers.**

Send your license number to:

Joe Jordan Phone 609 518 9672

jjvtown@aol.com



THE SHIP MODEL SHACK

The Seaport Museum has chosen PSMS to represent ship modeling to the public. We are one of the few exhibits that can respond when asked a question (one other being the boat shop). **We need volunteers** to sit the shack on weekends. Take a model, meet the public and share our hobby. Contact: Joe Jordan at JJVtown@aol.com

Or sign up on the web: philadelphia-shipmodelsociety.com

Above left: The new orientation of the Shack gives it more visibility

Left:

The O'Neill family were guests of Mike Weaver whom he met while sitting the Ship Model Shack.

From left to right: Kevin, the father, sons Matt and Joe, and Granddad Tom. Kevin builds RC sailboats.

We are fortunate to have the shack as an outreach tool and a dedicated member like Joe Jordon as coordinator.



SHOW & TELL

Photos by John Bullock & Ron Spicer



JOE GUDONIS
MAID of the MIST
Canada 1900
Niagara Falls tour boat
Shown last month and now
finished. Scratch built from post-
card photos. Beautifully done in the large scale, Joe said one
of the difficulties was the octagonal wheel house.

He adapted needle point canvas for the upper deck railings
and 1/32nd microscope slide glass for windows. It is also ra-
dio controlled. The short bowsprit is a mystery.

JOE JORDON



TUG BOAT HERCULES 1906
Scratch built. Made for his daughter
who did the photo research.
Every part is hand made with a solid
hull using the bread and butter
technique and mounted on a solid
wood base. with "CAMDEN NJ
1906" hand carved on the base.
Built in Camden N.J., the ocean tug
towed her sister ship Goliath around the horn to California.
Currently retired as an excursion vessel. Scale 1/44



Continued on pg 6

ED LEAF RECOGNIZED FOR HIS LONG SERVICE AS TREASURER



Ron Spicer representing the Ship Model Society, pre-
sented an award of appreciation to Ed Leaf on his re-
tirement as the Treasurer. His duties will be taken over
by Steve Bulova. Thank you Ed for over 25 years of
commitment to the Society.

Ed is one of our most distinguished members, known,
not only for his superior modeling skills, but also for his
excellent book "Ship Modeling From Scratch".

12th CHESAPEAKE BAY MARITIME MUSEUM MODEL EXPO

**SATURDAY MAY 19TH AND SUNDAY
MAY 20TH 2018
ST . MICHAELS, MARYLAND**

SEE PAGE 10

SHOW & TELL continued



ED LEAF

Japanese Battleship MIKASA
Scratch built . Scale 1/16
1890's pre-dreadnaught
Flagship of Admiral Heihachiro
throughout the Russo-Japanese
War 1904-05. Including the
battles of Port Arthur, Yellow
Sea and Tsushima



STEVE BULOVA

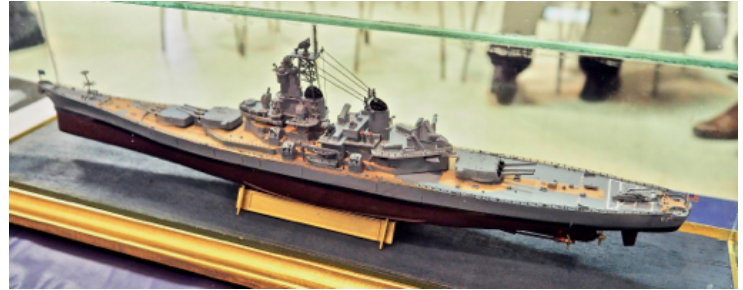


1935 ITALIAN
TUG BOAT Scale 1/30
A Panart kit
Hull is double planked. It
will be radio controlled.
Coated the interior hull
with slow drying epoxy
He also demonstrated a
new tool for cutting the
planks - a metal wall
scraper (shaped like a large
chisel.)



MIKE
ZIMMERMAN

A trumpeter plastic kit
BATTLESHIP NEW JERSEY.
Made for a friend and presented
in Mike's trademarked glass
case. Scale 1/700

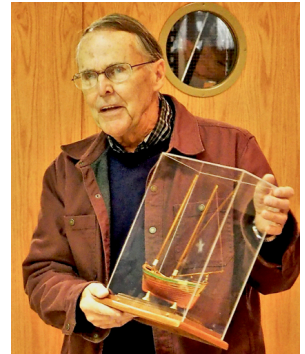


SPENCE DELLIN

BLOCK ISLAND FISHING
BOAT Scale 1/32

Scratch built

The hull was hollowed out of a
solid block to 1/16th of an inch
thick and then planked clinker
style. Spence makes every part
including the rope. Complete
with a wood base and plastic case.



Continued on page 7

SHOW & TELL continued

FED SIGNOR



18th CENTURY LONGBOAT

1/4" scale

Fred is scratch building the model using Model Shipways plans from a used kit. Completely planked, he is now faring the interior ribs to proper thickness.

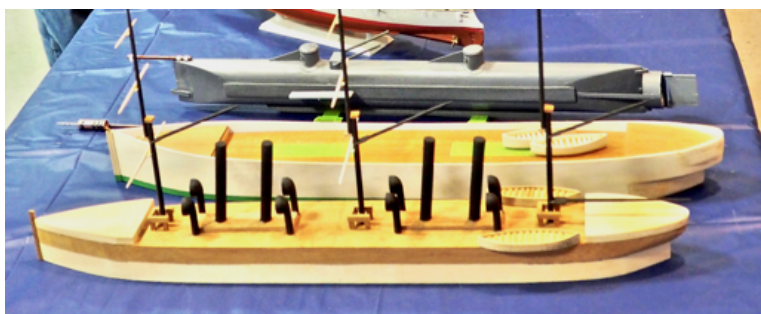


MIKE WEAVER



Confederate submarine CSS HUNLEY Scale 1/35

Now completed with the spar torpedo along with the partially finished Civil War Union commerce raider- the steam driven USS WAMPANOAG and sail driven Union blockade ship HOUSATONIC.



RON SPICER



USS OLYMPIA 1891

Revell plastic kit. Scale 1/232

A volunteer project for ISM.

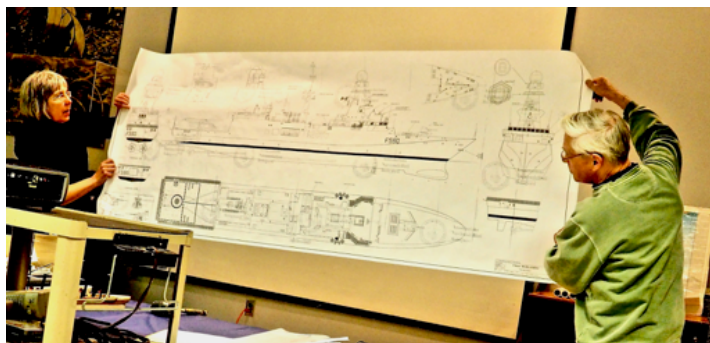
Built to represent the ship in the "as built" configuration. The rivet pattern was removed from the hull, the flying bridges were added (2 on the stern bridge) and the turret tops were painted green.

As an added feature, the sails were added though seldom used.

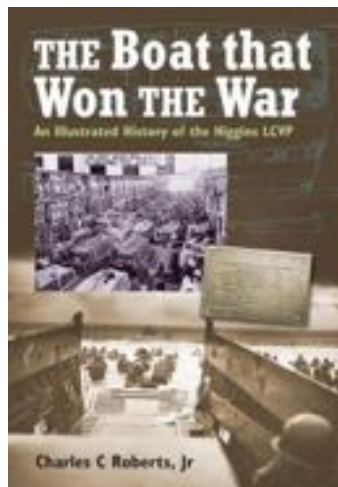


FRANCINE SERRATORE

To compliment her talk, Francine displayed plans of one of the contenders for the U.S.Navy final design - The Italian Navy's Bregamini Class destroyer Francine's favorite scale- 1/96



BOOKS

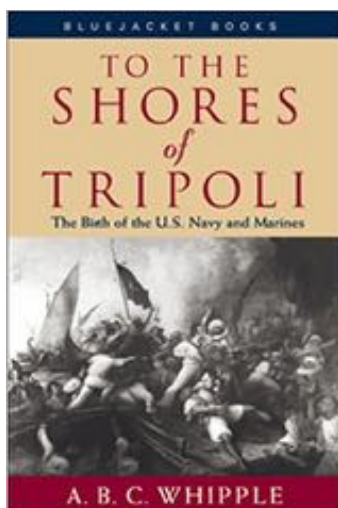


THE BOAT THAT WON THE WAR

An illustrated history of the Higgins LCV

The Landing Craft Vehicle Personnel - LCVP for short or simply the “Higgins boat to most of its users - was “the boat that won the war”, according to General Eisenhower. It served in almost every theater of World War II.

This book combines the first in-depth history of its development with a detailed description of construction, machinery, and handling based on first-hand experience of the author guiding the restoration of a wartime example for his museum. Well illustrated with plans and photographs, it will be of interest to both model makers and enthusiasts both military and naval

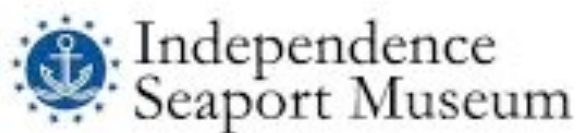


TO THE SHORES OF TRIPOLI

The Birth of the U.S. Navy and Marines

The Barbary War was America’s first war against an Arab despot and President Thomas Jefferson’s first major challenge to U.S. foreign policy. Faced with the choice of trading arms for hostages or meeting force with force, Jefferson sent a squadron of warships to the mediterranean while congress was in recess.

Fascinating personalities besides Jefferson are Commodore Edward Preble, the quarterdeck tyrant who commanded the first naval forces into battle, the bold junior officer Stephen Decatur, and the tyrannical bashaw, Yusuf Karamani. And finally, a ground war fought by a U.S. Army Captain, 8 Marines and a rabble of Christians and Arabs sent to free the hostages.



Sail Philadelphia Festival

The only Tall Ships America

on the east coast

Memorial Day Weekend

May 24- 28



The Ship Model Society of New Jersey presents
The 36th Annual Northeast Joint Clubs

SHIP MODEL CONFERENCE AND SHOW

SATURDAY, APRIL 28th, 2018

Port 'N' Starboard Convention Center, Ocean Beach Park, New London, CT
driving directions at: www.ocean-beach-park.com then click on "contact"

Model Setup 8:15 AM — General Admission 9:00 AM

ATTENDEE REGISTRATION

Name: _____ Club: _____

Email Address (optional): _____

Guest(s): _____

Please reserve _____ seat(s) for the Conference

- Before March 15, 2017 @ \$35.00/person
- Before April 22, 2017 @ \$40.00/person
- After that or at the door @ \$45.00/person

Enclosed is my check in the amount of \$ _____

Please make your check payable to:
And mail it to:

The Ship Model Society of New Jersey
c/o TOM RUGGIERO
54 PEACH ORCHARD DRIVE
EAST BRUNSWICK, NJ 08816

SHIP MODEL REGISTRATION

We encourage you to bring one or more ship models for display. We will prepare a display placard for each model using the information that you provide below. Please indicate the size of the model so we can determine space requirements.

You can choose to enter the model for The People's Choice Awards and/or the Jim Roberts Craftsmanship Award. Check the box(es) that apply. See attached for Jim Roberts award instruction.

If you want to bring more models, just list them and their pertinent data on the reverse side or on another sheet.

Model Name: _____ Country: _____ Year: _____

Scale: _____ Length: _____ Depth: _____

Please enter this model for:

| | | |
|----------------------------|--------------------------|--------------------------|
| The People's Choice Awards | <input type="checkbox"/> | <input type="checkbox"/> |
| The Jim Roberts Award | <input type="checkbox"/> | <input type="checkbox"/> |

Questions? Contact Tom Ruggiero - Trugs@comcast.net or
Chuck Passaro - cpassaro123@gmail.com

Twelfth Maritime Model Expo

Chesapeake Bay Maritime Museum

St. Michaels, Maryland

Saturday and Sunday, May 19 and 20, 2018

Modeler/Exhibitor:

You are invited to participate in the Twelfth Maritime Model Expo to be held Saturday and Sunday, May 19 and 20, 2018 at the Chesapeake Bay Maritime Museum, St. Michaels, Maryland.

Registration is free.

To register please fill in the blanks and return to me by **Friday, May 11, 2018.**

Thank you....

=====

Name(s) of participant(s) _____

Number in party- ____ (Include yourself)

Address - Street _____

City _____ State _____ Zip _____

Telephone No. _____ Email _____

Type and size of model(s) _____

If applicable: Radio Channel(s) _____ or Spread Spectrum _____

=====

If you will be exhibiting in the Auditorium how many six-foot tables will you need? _____

How many chairs? _____ (There is no charge for these.)

If you wish to rent an eight-foot table (with two chairs) by the pool please make a check for \$15.00 payable to The Model Guild of the CBMM and mail to Ed Thieler, or pay at the gate.

Advanced registration and table rental is desirable, but registration and rental on arrival on May 19 and 20 is acceptable.

Ed Thieler
28289 Oaklands Rd.
Easton, MD 21601
410-820-5028
edthieler@yahoo.com

ADDITIONAL INFORMATION ABOUT EVENTS AND SCHEDULES CAN BE OBTAINED
BY CONTACTING ED THIELER AT THE ABOVE EMAIL ADDRESS

PSMS SHOW 'N' TELL PRESENTATION FORM

Member: _____ Date: _____ % of Completion: _____

Model Presented: _____ Scale: _____ Circa: _____

Ship's Origin (Country): _____ Estimated Date of Completion: _____

Type of Vessel (Sailing, Military, Working, etc.): _____

Materials Used (Wood, Plastic, Resin, etc.): _____

Scratch/Kit/Kit Bash: _____ Kit Manufacturer: _____

Kit Manufacturer Country: _____ Were you happy with the kit? _____

Additional Comments (Ship's History, Unique Features, etc):

What were you most pleased with regarding this project?

If you were to build this model again, what would you do differently (If anything)?

Do you have any suggestions regarding building techniques to share?

Is there a particular problem that you'd like assistance with?

What were some of the most helpful research resources used?

What is the significance of this project to you?

If you presented something other than a ship model, describe it below.

If additional space is required, used the back of this form. PLEASE SUBMIT THIS COMPLETED FORM TO THE SECRETARY AT THE CONCLUSION OF YOUR PRESENTATION FOR NEWSLETTER INPUT PURPOSES.

