

# Quarterdeck

December  
2017

PHILADELPHIA SHIP MODEL SOCIETY

[www.philadelphiahipmodelsociety.com](http://www.philadelphiahipmodelsociety.com)

Launched January 7, 1931

## PSMS OFFICERS & EXECUTIVE BOARD

### President:

Jim Wheeler  
[jrwheeler@att.net](mailto:jrwheeler@att.net)

### Vice-President:

CWO Tod Wardwell  
[wardwellav@gmail.com](mailto:wardwellav@gmail.com)

### Secretary

John Bullock  
[jfbullock@gmail.com](mailto:jfbullock@gmail.com)

### Treasurer:

Ed Leaf  
[pjlebl@comcast.net](mailto:pjlebl@comcast.net)

### Historian:

John Oddo  
[johnmariaor1959@gmail.com](mailto:johnmariaor1959@gmail.com)

### Editor

Ron spicer  
[rspicer33@aol.com](mailto:rspicer33@aol.com)

### Webmaster:

Todd Wardwell

### Members-at-Large

John Christinzio  
Spence Delin  
John Esposito  
Joe Gudonis  
Joe Jordan  
Pat Leaf  
Jim MacIntyre  
Tom McElhinney  
Josef Messmer  
John Oddo  
Rick Rathgeber  
Francine Serratore  
Mike Weaver  
Mike Zimmerman

### Representatives to ISM

Joe Jordon  
Pat & Ed Leaf  
Tom McElhinney

The 845th meeting of the Philadelphia Ship Model Society (PSMS) was held at the Independence Seaport Museum (ISM) on the 7th day of December. Jim Wheeler called the meeting to order at 19:20 and opened with the Pledge of Allegiance.

**A moment of silence** was observed in remembrance of Pearl Harbor and to honor those who gave their lives during the attack on Hawaii on December 7, 1941.

## MINUTES OF THE MEETING

**The Secretary's minutes** were approved as printed in the November QUARTERDECK.

**The Treasurers' report** was accepted as presented by Ed Leaf.

### Election:

Elections were held and the officers for 2018 are:

President: **Todd Wardwell**, Vice-president: **Francine Serratore**

Secretary: **John Bullock**, Treasurer: **Steve Bulova**

**Ron Spicer**, Asst. Secretary/ Newsletter Editor

### Donation to Independence Seaport Museum

As in the past, it was proposed that the club donate \$450 to ISM. It passed unanimously.

### By-laws revisions

Pat Leaf suggested that the by-laws be checked for inconsistencies. The executive committee will review and present any changes to the membership.

### Ed leaf

Ed Leaf retired from the position of treasurer after more than 25 years

Respectfully submitted

John Bullock, Secretary

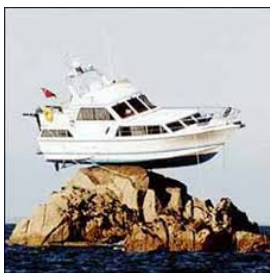
**January Program:** Food service in the time of the Napoleonic Wars in the Royal Navy by Pat Leaf.

## IMPORTANT NOTICE

### CHANGE IN MEETING DATES AND TIMES

For the months of January and February, the meetings will be held on Sunday January 7th and Sunday February 4th from 2 pm to 4pm. Please mark your calendars.

# OOPS!



Our apologies. Gerry Kates pointed out that in last months' article about navigation, presented by Capt. Orvis, we misquoted him. A sextant is 1/6th of a circle, not 1/16th.

## FORTHCOMING EVENTS

Dec 17th	Christmas Brunch, 12 noon Corinthian Yatch Club Essington, PA
Dec 31st	New Years Eve Fireworks at ISM
Jan 7th	2 pm PSMS Meeting, Program; "Food Service in the time of the Napoleonic Wars in the Royal Navy" by Pat Leaf
Feb 4th	2 pm PSMS meeting Program; To be announced
March 1st	PSMS meeting Return to regular meeting schedule

## THE SSMA JOURNAL

Become a member of SSMA

Annual dues are \$25.00 All membership applications and Renewals should be sent to:

Heinz Ricken  
514 Cranford Avenue  
Cranford NJ 07016



## THE PHILADELPHIA SHIP MODEL SOCIETY

*Launched January 7, 1931*

The Philadelphia Ship Model Society (PSMS) meets on the first Thursday of each month at the Independence Seaport Museum (ISM) at 1900 hours. ISM is located at Penn's landing, 211 South Columbus Boulevard, Philadelphia, Pennsylvania 19106

PSMS annual dues are \$35.00 for an INDIVIDUAL MEMBERSHIP \$40.00 for a FAMILY MEMBERSHIP Includes MEMBER as well as family with children FREE

**Guests are always welcome**

## PARKING

Parking is free at the Parking Authority Municipal Lot located directly in front of the Seaport Museum for members attending the monthly meetings. You must enter at the Walnut street entrance. A volunteer member will be there to monitor the gate between 6:15 and 6:50 PM. Those arriving earlier or later should temporarily park to the side in the oval and go to the front desk and obtain a parking pass, which, after use must immediately be returned to the front desk.

**Remember! You must have your license number on file with ISM in order to get special parking. If you use more than one auto, send both license plate numbers.**

Send your license number to:

**Joe Jordan Phone 609 518 9672**



The Delaware Valley Chapter meets at The Independence Seaport Museum at Penn's Landing on the Delaware River at 2:30 pm. Membership is \$15 for one year. Contact Chapter Chairman Steve Loveless at [sloveless1959@gmail.com](mailto:sloveless1959@gmail.com) or 215-495-8889 for more details or if you are interested in joining.



## PSMS SHIRTS & CAPS WITH EMBROIDERED SOCIETY LOGO

LONG SLEEVED POLO SHIRTS NAVY BLUE

**Men's sizes** small thru 4 XL. **\$35.00**

Add \$2.00 for 2XL, \$3.00 for 3XL and \$4.00 for 4 XL

**Women's sizes** thru 2X. **\$35.00**

SHORT SLEEVED POLO SHIRTS, NAVY BLUE

**Men's sizes** small thru 6XL and tall in XL thru 3X

**Women's sizes** small thru 3XL **\$28.75**

**Hat** 6 panel wave cap, navy with white trim **\$14.50**

### FOR ORDERS:

Contact Pat Leaf at [pjlebl@comcast.net](mailto:pjlebl@comcast.net)

**Please be sure of your size**



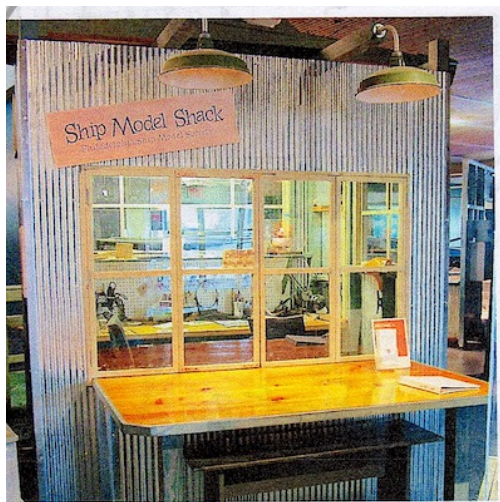
## HOLIDAY MEET & GREET



After a short business meeting, the club adjourned to the party-half of the meeting. Despite the weather predictions, the turnout was good.

Steve Bulova and Mike Zimmerman brought their banjos and accompanied the singing of Christmas carols. There was plenty of food and drinks for everyone. All in all, a pleasant evening of fellowship. Our thanks to Ed and Pat Leaf for the table settings and to all those who contributed to making it a fun and enjoyable evening.





# THE SHIP MODEL SHACK

The Seaport Museum has chosen PSMS to represent ship modeling to the public. We are one of the few exhibits that can respond when asked a question (one other being the boat shop). We need volunteers to sit the shack on weekends. Take a model, meet the public and share our hobby. Contact: Joe Jordan at [jjvtown@aol.com](mailto:jjvtown@aol.com)

Or sign up on the web: [philadelphia\\_ship\\_model\\_society.com](http://philadelphia_ship_model_society.com)

We here at the QUARTERDECK would like to elaborate about meeting the public. Here are examples of some of the interesting people you might meet on a typical Saturday or Sunday.

**The Shack is now over 8 years old**



Art & Marie Lynn Rice  
Graham, Washington State



South Philly Mummer with visitors  
from Washington, DC



Rodrigo Santos-  
San Palo, Brazil



Peter from Boston



Willow from Reading, PA



Troop #1. One hundred three years old  
this year..Elizabethtown, PA

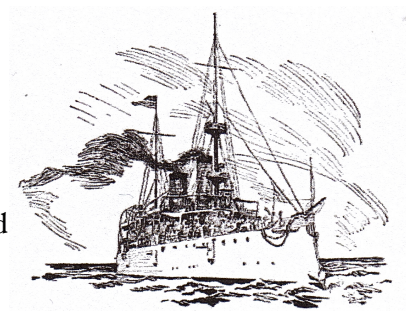


Marco Escobar, Nazareth, PA with  
the Soto family from Guatemala.

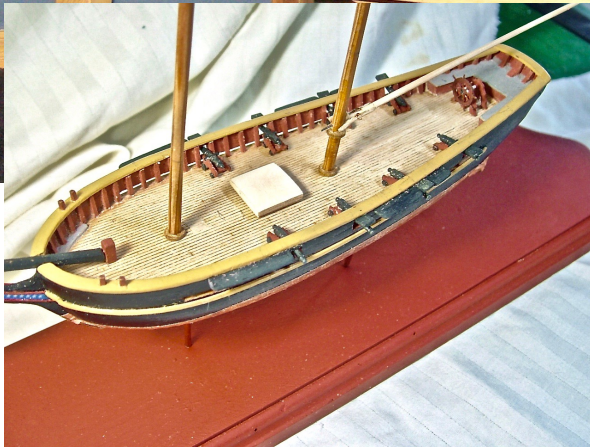


Only the people who showed interest  
and asked questions were photographed  
(with their permission).

Editor



# NEW EXHIBIT AT ISM FEATURES MODELS BY PSMS MEMBERS



Titled SAIL, STEAM, STEALTH, is a new exhibit to show the growth of the U.S. Navy over its 242 years. Displayed along with the U.S.S Olympia model are the models of U.S.S. Diligence, built by Joe Jordan and Ron Spicer and a model of the submarine U.S.S. Becuna, built by Ron Spicer. All three models are built in 1/96 scale and dramatize the growth of the modern Navy, not only in size but in capability.

## DOINGS AT ISM Nov 28

At the ISM today, we pulled the last of the small craft and swans from the basin, and a hired crane lifted them from the riverside of the walkway to the open deck above. Jeffrey has constructed a covering similar to a greenhouse to protect the boats over the winter.

Joe Jordon

At right- **DILIGENCE** decorated for the season and showing off her new bowsprit.



# ISM FESTIVAL OF LIGHTS

The festival of Lights was held on December 9th with 6 members showing their lighted model boats.

There were more than enough models for an impressive display. The shack was decorated and lunch was provided by the museum.

As evening drew on, the crowds grew to view the parade of lighted boats on the river. Members displaying their boats were;

Francine Serratore, Jim Wheeler, Joe Jordon, Mike Weaver, Ron Spicer, along with Jerry Wiegand.



# WHAT A CATCH !

Tanker raises anchor, finds torpedo



A pretty scary situation in southern England in early November as a tanker pulled up a test torpedo when it raised its anchor in Portland.

A diving unit was dispatched to the scene where they evacuated the majority of the crew from the Maltese-flagged MT Skaw Provider, leaving six crew members including the Captain on board to respond in case the torpedo detonated. The photo shows the old ordnance pierced by the fluke of the anchor after it had been dragged up from a depth of 15 meters.

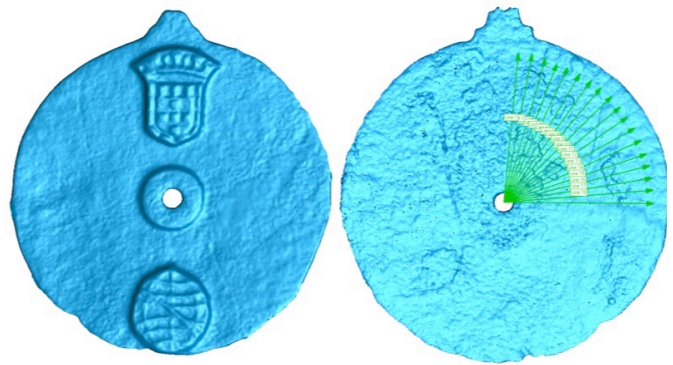
The tanker was carrying approximately 1000 tons of fuel oil. The fuel cargo was pumped into the after possible tanks to reduce the effects of any explosion. Royal Navy divers who are explosive specialists then removed the torpedo in a safe manner.

The Royal Navy said the torpedo was a British made device believed to have come from a test range that existed near Portland until the 1980's and had remained undetected. "While they vary in type of hazard, they can contain highly flammable propellant," the Royal Navy noted.

The 4,279 dwt Skaw Provider was built in 2005.

# 500 YEAR OLD ASTROLABE

MAY BE THE EARLIEST NAVIGATION TOOL EVER DISCOVERED



Researchers at the University of Warwick have identified what is believed to be the earliest known marine navigation tool ever discovered.

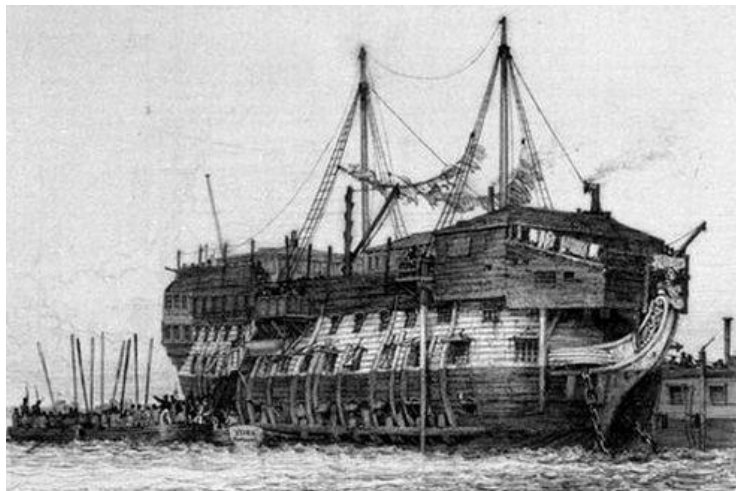
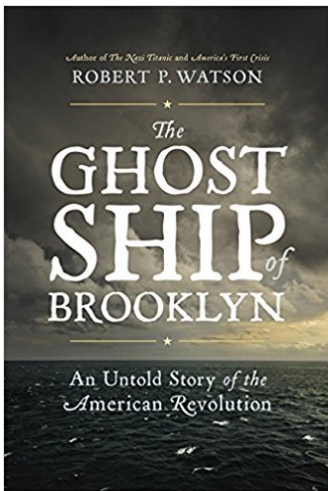
The artifact, now determined to be an astralabe, was excavated in 2014 from the wreck of a Portuguese explorer ship which sank during a storm in the Indian Ocean in 1503. The ship was the Esmeralda, part of a fleet led by Portuguese explorer Vasco Da Gama, the first person to sail directly from Europe to India.

The astrolabe is believed to date from between 1495 to 1500, which would make it the earliest known marine navigation tool ever discovered, according to researchers. The tool would have been used by mariners to measure the altitude of the sun, helping them to determine their location on the high seas.

Although the 17.5cm diameter bronze disc was believed to be an astrolabe, it had no visible markings - only engravings that have since been identified as Portuguese coat of arms and the personal emblem of Dom Manuel I, King of Portugal from 1495 - 1521. Professor Mark Williams used pioneering scanning analysis and 3D imaging technology, revealing tiny details invisible to the human eye. The scans showed etches around the edge of the object, Each separated by 5 degrees- proving that it is , in fact, an astrolabe.



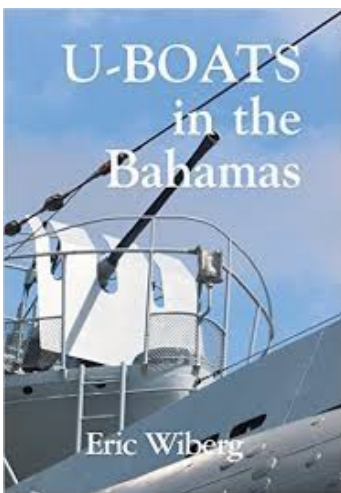
# BOOKS



## THE GHOST SHIP OF BROOKLYN

**An Untold Story of the American Revolution by Robert P Watson**

Moored 110 yards off the coast of Brooklyn until the end of the war, the derelict ship HMS Jersey was a living hell for thousands of Americans captured or accused of disloyalty. Crammed below deck, more men died aboard the rotting prison ship than were lost to combat during the entirety of the war .



## U-BOATS IN THE BAHAMAS by Eric Wiberg

Tells the story of the attacks of German and Italian U-BOATS on allied shipping and the merchant mariners who continuously returned to sea. This book is one more piece in the giant puzzle of the history of WWII.

## THE NAUTICAL RESEARCH GUILD

"ADVANCING SHIP MODELING THROUGH RESEARCH"

Annual membership includes our world-renowned quarterly magazine, Nautical Research Journal, which features photographs and articles on ship model building, naval architecture, merchant and naval ship construction, maritime trade, nautical and maritime history, nautical archaeology and maritime art.

Other benefits include discounts on annual conferences, ship modeling seminars, NRG products and juried model competitions which are offered exclusively to Guild members. We hope you will consider joining our ongoing celebration of model ships and maritime history.



**YEARLY  
MEMBERSHIP**  
\$48.00 USA  
\$60.00 Foreign



For more information contact us at: [www.thenrg.org](http://www.thenrg.org) or telephone 585-968-8111

**HAPPY HOLIDAYS FROM THE OFFICERS AND  
EXECUTIVE BOARD OF PSMS**

