

**PSMS OFFICERS &
EXECUTIVE BOARD****President:****Jim Wheeler**jrwheeler@att.net**Vice-President:****CWO Tod Wardwell**wardwellav@gmail.com**Secretary****John Bullock**jfbullock@gmail.com**Treasurer:****Ed Leaf**pjlebl@comcast.net**Historian:****John Otto**johnmaria@comcast.net**Editor****Ron spicer**rspicer33@aol.com**Webmaster:****Todd Wardwell****Members-at-Large****John Christinzio****Spence Delin****John Esposito****Joe Gudonis****Joe Jordan****Pat Leaf****Jim MacIntyre****Tom McElhinney****Josef Messmer****John Otto****Rick Rathgeber****Francine Serratore****Mike Weaver****Mike Zimmerman****Representatives toISM****Joe Jordon****Pat & Ed Leaf****Tom McElhinney**

The 838th meeting of the Philadelphia Ship Model Society was held at the Independence Seaport Museum on May 4th 2017 with 29 members and guests, President Jim Wheeler called the meeting to order at 7:15 pm and opened with the Pledge of Allegiance.

MAY 4th 2017 MINUETS

Secretary Minuets for 4/6/17 submitted and accepted

Financial Report for April submitted and accepted

OLD BUSINESS

SUMMER SOCIETY PICNIC Date is Saturday August 12th

The club picnic was discussed and Dr Jim Nutt offered his house again. His offer was accepted and the discussion turned to the food and how to handle it. VP Todd Wardwell and Pres. Jim Wheeler suggested having it catered and will look for a caterer.

Put this on your calendar. There will be a pool for radio controlled craft, plenty of parking, and beautiful scenery. We are very fortunate to have this event once more at the home of Jim and Betsy Nutt.

FDR Park -off the table.

CAMP ENGLEWOOD in Elkins Park, neighbors of Tom and Alice McElhinney, was again presented and described as the perfect place for radio control. It is a lake with an island and is kept clean of algae by the camp. Further discussion is planned.

LYNX MODEL in need of repair. He is willing to pay someone to repair the model. Contact Andrew Seligman at (215) 514-6724

TOM MC ELHINNEY explained Alice's situation and the care she is receiving.

NEW BUSINESS

FARM FAIR at Pennsville New Jersey June 3rd.

Last year, some of our members including your editor, took the opportunity to show their models at this fair. Exhibit tables were supplied in the shade of the trees. Along with a Civil War re-enactor band of 5 men playing authentic instruments, there were the local American Legion band, farm animals, American Indian Dancers, various displays by vendors, local organizations and the Historical Society Museum along with an old time relaxed atmosphere.

Located in N.J south of the Delaware Memorial Bridge on Rt 49.

plenty of parking. For more information, contact Pat Leaf at

pjlebl@comcast.net

Raffle Winner Spencer Anderson

Submitted: John Bullock: Secretary / Ron Spicer: Editor

(The worst naval disaster you've never heard of.)



MAY MEETING PROGRAM:



The “Blackwall Frigate” Clarence

An illustrated talk by Ian Petrie,
Senior Associate Director,
Center for Teaching and Learning,
University of Pennsylvania

A ship's log held in Penn's Kislak Center for Special Collections is our entrée into the history of this ship, whose career provides interesting vantages on the British Empire in its Victorian heyday. One of Green & Co.'s famous “Blackwall frigates”, the *Clarence* variously sailed between London, India, the Caribbean and Australia, carrying diverse passengers – soldiers, indentured laborers, free migrants – whose presence and experiences on the ship connect it to larger stories of economic history, military history, the history of medicine and environmental history. This illustrated talk will draw on not only the log here in Philadelphia, but also archival sources from collections in England, Australia and New Zealand, and the Maritime History Archive in St. John's, Newfoundland.

MY PATIENTS WERE MUMMIES

Member and past President Mike Zimmerman M.D.,Ph.D is an anthropologist and retired pathologist. His book *My Patients Were Mummies* (www.novapublishers.com) follows the many adventures of a career that took Mike to exotic parts of the world and has contributed our understanding the roll that the evolution of diseases has had in human and cultural history. It includes a chapter called “Helmsman's Elbow: An Occupational Disease of the 17th Century. This chapter is about the helmsman of the the ship Vasa. Mike gave a presentation of this topic to the PSMS

SICK BAY

Spence Delin -Recovering from a dual knee operation and is doing well.

Bobbie Zimmerman - Had an eye operation and is doing well

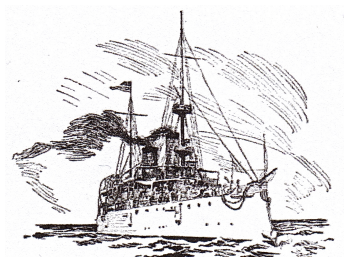
THE SHACK

Keep the lights on. Support the Shack. Volunteer. Sign up to sit the Ship shack. Take a model and show visitors what our hobby is all about.

Contact: Joe Jordan at jjvtown@aol.com

Or sign up on the web:

philadelphiahipmodelsociety.com



Forthcoming Events

May 4th	7 pm PSMs Meeting
June 1	7 pm PSMs Meeting
July 6th	7 pm PSMs Meeting
Aug 3rd	7 pm PSMs Meeting
Aug 12th	Society Picnic 2 pm
Sept 7th	7 pm PSMs Meeting
Oct 5th	7 pm PSMs Meeting
Nov 2nd	7 pm PSMs Meeting
Dec 17th	Christmas Brunch, 12 Noon Corinthian Yatch Club Essington, PA

PARKING

Parking is free at the Parking Authority Municipal lot located directly in front of the Seaport Museum for members attending the monthly meetings. You must enter at the Walnut Street entrance. A volunteer member will be there to monitor the gate between 6:15 and 6:50 PM. Those arriving earlier or later should temporarily park to the side in the oval and go to the front desk and obtain a parking pass, which, after use, must immediately be returned to the front desk.



PSMS SHIRTS & CAPS WITH EMBROIDERED SOCIETY LOGO

For the first time women's sizes are available

Long-sleeved polo shirts in men's sizes- Small thru 4XL	\$35.00
Add \$2.00 for 2XL, \$3.00 for 3XL and \$4.00 for 4XL	
Women's sizes through 2X	\$35.00

Short sleeved polo shirts, navy blue	\$35.00
Men's sizes small thru X6Land tall in XL thru 3X	\$28.75
Women's sizes small thru 3XL	\$28.75
Hats 6 panel wave cap, Navy with white trim	\$14.50

FOR ORDERS

Contact Pat Leaf at pjlebl@comcast.net

Please be sure of your size

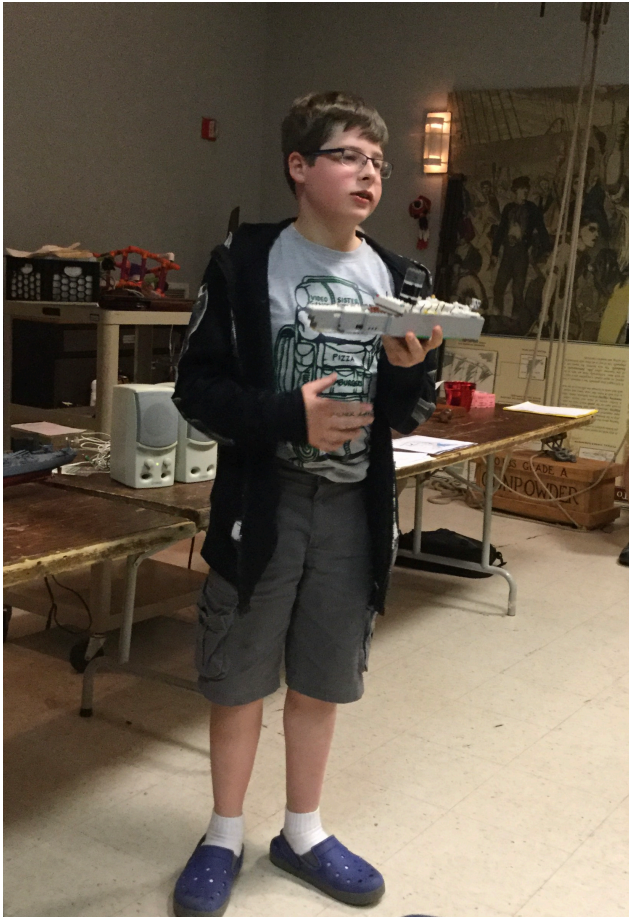
THE PHILADELPHIA SHIP MODEL SOCIETY

Launched January 7, 1931

The Philadelphia Ship Model Society (PSMS) meets on the first Thursday of each month at the Independence Seaport Museum (ISM) at 1900 hours. ISM is located at Penn's Landing, 211 South Columbus Boulevard, Philadelphia, Pennsylvania, 19106. Guests are always welcome!

PSMS annual dues are \$35.00 for an INDIVIDUAL MEMBERSHIP: \$40.00 FOR A FAMILY MEMBERSHIP (INCLUDES MEMBER as well as family with children FREE.

SHOW AND TELL



ED LEAF

Showed his scratch built N scale
railroad river boat model used to cross
the Mississippi before bridges were built



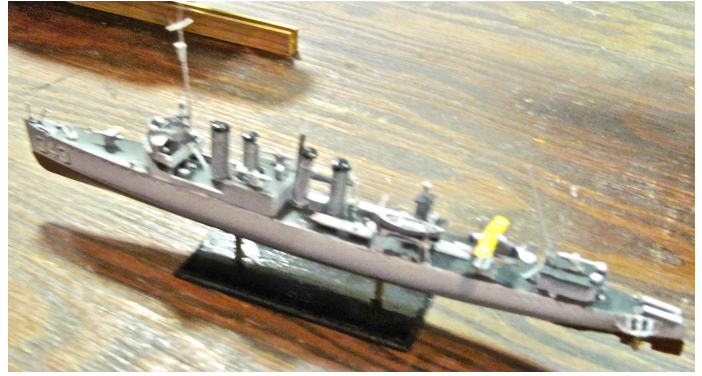
MIKE WEAVER

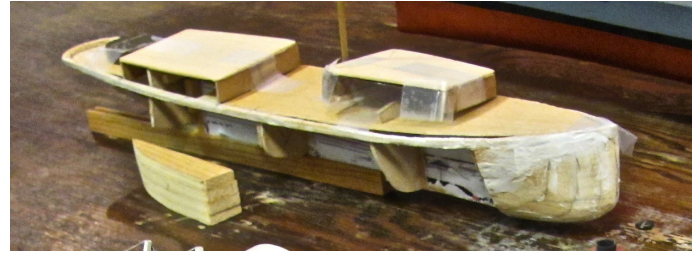
Brought in a rescued damaged Battleship New Jersey. He fabricated new turrets and guns as well as other details. Repainted the hull and added a computer printed flag.



FRANCINE SERRATORE

A 1/96 scale British Destroyer Escort from her radio controlled home fleet

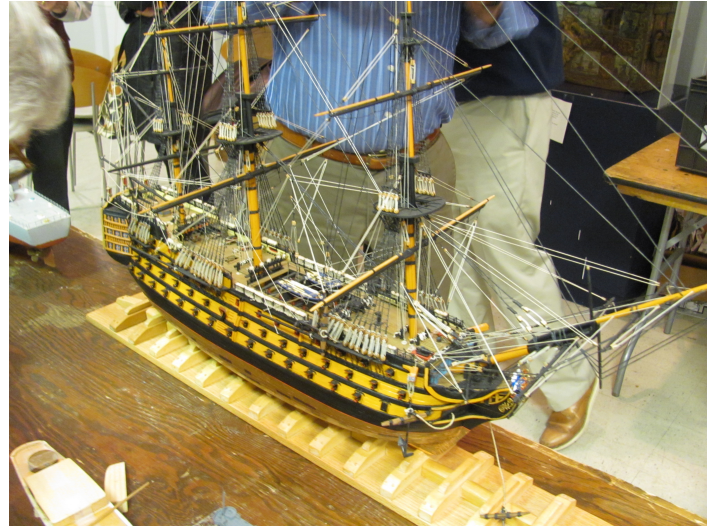




TOM McELHINNEY
1913 pleasure yacht "ALICE"
Scratch built - a work in progress.
After struggling with only photo research,
he has now acquired the proper plans plans.



FRED SIGNOR
1628 Swedish ship "VASA". 1/75 scale
The model is in mid construction



JOHN BULLOCK
 Showed a completed "HMS Victory"
 1/98 scale
 Impressive!

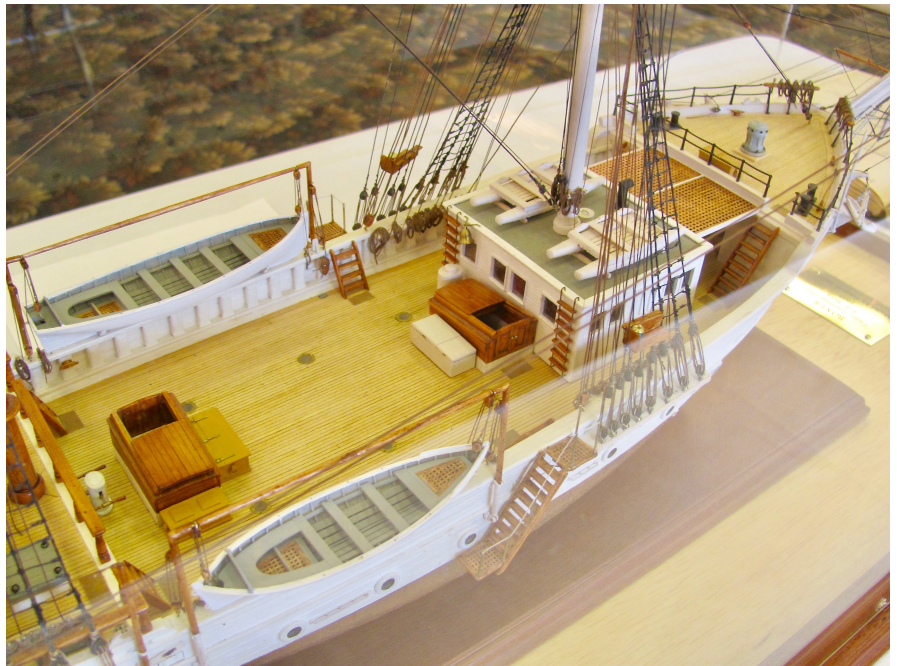


35th ANNUAL NORTHEAST JOINT CLUBS **SHIP MODEL CONFERENCE AND SHOW**

Held every year at the Port N Starboard Convention center at Ocean Beach Park, New London Connecticut and hosted on a rotating schedule by one of 5 ship model clubs. PSMS members traveled the greatest distance and had the largest no of attendees. This year 20 members and wives attended. PSMS members usually meet for dinner at a local restaurant upon arrival Friday night. The event consists of table top demos, vendors, a speaker, a raffle of donated prizes and the display of close to 100 ship models. For some, the main attraction is the buffet lunch!

Cont. next page

PSMS member **Spence Delin** won the Jim Roberts Award, for the “highest standards of ship model building” for his scratch built model of USS BOXER, 1905, judged by a panel of 5 judges; one from each of the 5 participating clubs. Of the eight times it has been awarded, Spence has won three times. He was also honored with the Peoples Choice Award - all who attended voted for the top 3 models. Only 4 points separated first and third place.



SNAPSHOTS

