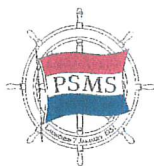


12/15



QUARTERDECK

THE NEWSLETTER OF THE PHILADELPHIA SHIP MODEL SOCIETY

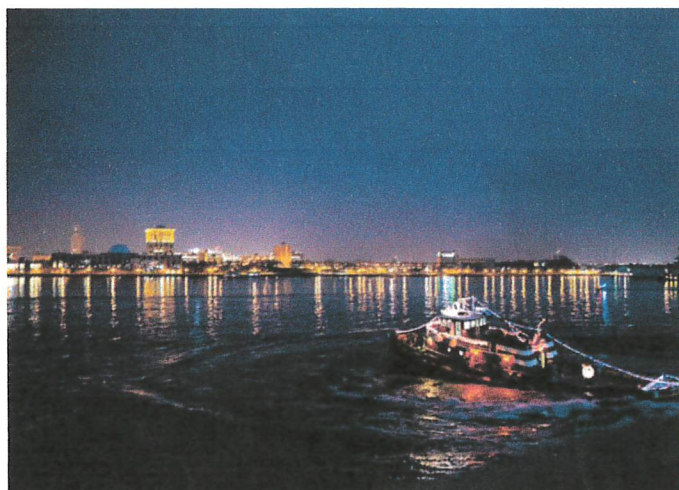
Launched 7 January 1931

<http://philadelphiahipmodelociety.com>

December 2015

Philadelphia, Pennsylvania

PARADE OF LIGHTS



With temperatures in the high 60s on Saturday, December twelfth there was a tremendous turnout for the annual **PARADE OF LIGHTS** at **ISM**. Inside many people boarded the *Diligence II* at the first public boarding—the reaction was all that we had hoped it would be! **PSMS' Joe Jordan** had four models on display, **Jim Wheeler** had two, and **Francine Serratore** had one. Also present where faithful **Gerry Weigand** and **Spencer Anderson**.

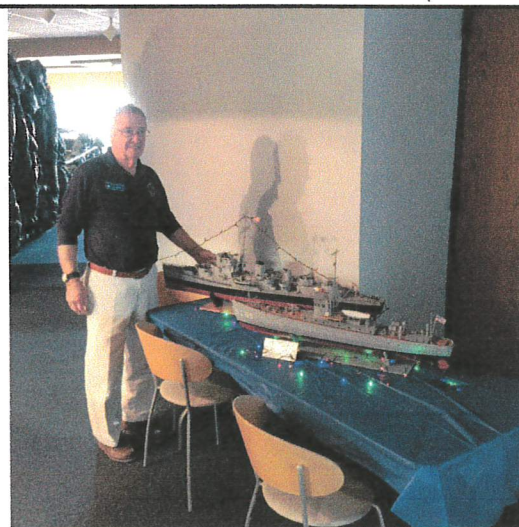
HAPPY HOLIDAYS



The 822nd meeting of the **Philadelphia Ship Model Society (PSMS)** was held at the **Independence Seaport Museum (ISM)** on the third day of December 2015. President **Tom McElhinney** called the meeting to order at
(continued page 3)

INSIDE THIS ISSUE

- 5 **DECEMBER** PROGRAM
- 6 **DECEMBER** SHOW N' TELL
- 7 **HOLIDAY BRUNCH BUFFET**
- 9 **NOW HEAR THIS ...**



Joe Jordan at the Parade of Lights at ISM.

NEXT MEETING: 7 JANUARY
STEVE FARRELL
MISSION: CORPS OF ENGINEERS



Steve Farrell graduated from the New Jersey Institute of Technology with a Civil Engineering Technology degree in 1997 and again with a Surveying Engineering degree in 2004.

Steve worked for a private surveying company starting as a rodman and working his way up to become a party chief for a variety of land and hydrographic surveying projects from 1995 until 2004. He joined the Corps of Engineers, Philadelphia district, in June of 2004 as the team leader or the Atlantic City Survey Office. Steve was responsible for coastal hydrographic surveys for beach nourishment, coastal construction as well as maintenance dredging projects for intracoastal waterways in New Jersey and Delaware. Steve became the Chief of Field Surveys for the Philadelphia District in 2010.

He is a member of the National Society of Professional Surveyors/The Hydrographic Society of America (NSPS-THSOA), Certified Hydrographer and has served on the PSPS/THSOA Hydrographer Certification Board. Steve holds Professional Land Surveyor licenses in New Jersey and Pennsylvania.



QUARTERDECK STAFF

Editor: Alice McElhinney (alice9books@verizon.net)
Photographer: Mike Weaver (cghannah@gmail.com)
Distributor of B/W Edition: Ed Leaf (pjlebl@comcast.net)
Consultants: Ron Spicer (rsonaldspicer@aol.com)
 Jerry Kates (AdvPr1920@aol.com)
Webmaster: Spencer Andersen (tallpine@aol.com)
Letters to Editor: 7900 Ivy Lane, Elkins Park, PA 19027 USA;
 Phone: +215-635-2988



NEW YEAR'S EVE FIREWORKS

Get a perfect view of the New Year's Eve Fireworks over the Delaware River from inside the **Independence Seaport Museum**—open late for a family-friendly celebration on 31 December from 5 p.m. to 7 p.m. Ring in the New Year early with noise makers, party hats and a sparkling cider toast before the 6 p.m. waterfront fireworks show. **Express entry and free admission for members.**

(Photo by G. Widman for Visit Philadelphia.)



FORTHCOMING EVENTS

31 December: 4 p.m.-7 p.m. NEW YEAR'S EVE FIREWORKS at ISM
7 January: 7 p.m. PSMS Meeting, Program: MISSION OF CORPS OF ENGINEERS
4 February: 7 p.m. PSMS Meeting, Program TBA
3 March: 7 p.m. PSMS Meeting, Program TBA
7 April: 7 p.m. PSMS Meeting, Program TBA
29-30 April: Northeast Regional Ship Model Conference & Show, New London, CT
5 May: 7 p.m. PSMS Meeting, Program TBA
2 June: 7 p.m. PSMS Meeting, Program TBA



THE PHILADELPHIA SHIP MODEL SOCIETY

Launched 7 January 1931

(See listing of PSMS Officers and Board of Directors on page 14.)

The Philadelphia Ship Model Society (PSMS) meets on the first Thursday of each month at the Independence Seaport Museum (ISM) at 1900 hours. ISM is located at Penn's Landing, 211 South Columbus Boulevard, Philadelphia, Pennsylvania 19106. Guests are always welcome! (For detailed directions to ISM, please see our website at <http://phillyshipmodel.com>). PSMS' annual dues are \$35.00 for an INDIVIDUAL MEMBERSHIP; \$40.00 for a FAMILY MEMBERSHIP (includes member, as well as spouse with children FREE). When attending a meeting discounted parking is available at the garage entrance next to ISM. The hotel is now a Hilton Hotel at Penn's Landing). Please take your parking ticket to the front desk at ISM and have it stamped. This allows parking at the facility for \$12.00. Municipal parking is also available in front of ISM; however, the rates are higher and vary with the season. PSMS also reimburses attendees with \$5.00 toward parking.

The *QUARTERDECK* is the newsletter of the Philadelphia Ship Model Society and is published after each monthly meeting. Copyright © 2015 Philadelphia Ship Model Society. All rights reserved.

1907 and opened with the Pledge of Allegiance which was followed by a moment of silence in memory of Pearl Harbor.

WELCOME: Our speaker, **Julie Baker** and her intern, **Mike Petruski**, and her friend, **Tom Avedisian**; **Craig Burns**, Chief Curator at ISM; and the following spouses of members: **Sue Delin**, **Loretta Gudonis**, and **Betsy Nutt**.

SICK CALL: The President reminded PSMS that **Richard Berlinger's** Memorial Service was the next day; and his widow **Nora Berlinger** is in rehab following back surgery. **Craig Bennett** announced that his mother had returned home after being hospitalized; **Tom Sheridan** was recovering was cataract surgery; and **Jim MacIntyre** is having back problems.

MOVED for this meeting to have Refreshments/Holiday Party last.

PROGRAM: **Julie Baker** gave a fantastic program on her recent course at the **National Maritime Museum** in Greenwich, London, England (see page 5 of the **QUARTERDECK**).

SHOW N' TELL: Led by Vice-President **Fred Signor** **Tom McElhinney**, please see pages 6 & 7 of the **QUARTERDECK**.
50/50 Drawing: Purchase of tickets: **Tom McElhinney**

BUSINESS MEETING:

The Secretary's minutes were approved as printed in the November **QUARTERDECK**. **Ed Leaf** presented the Treasurer's report and was approved. When asked, **Ed** said he must still write checks for \$50.00 to the **USS New Jersey** for their Thanksgiving meal and \$450.00 to the **Independence Seaport Museum** as a donation. (This was approved at the PSMS Executive Board Meeting on 9 August 2015 and ratified by PSMS at the 3 September 2015 meeting.)

OLD BUSINESS:

1. **THE SHACK:** **Joe Jordan**. Please sign-up tonight or email that you can volunteer: **Joe Jordan** (jjvtown@aol.com) (See our website calendar for a listing of volunteers.)
2. **NORTHEAST REGIONAL ONFERENCE & SHOW** on the 30th of April 2016 n New London, CT. **Pat Leaf** said there would be more details in the new year. An Assistant Treasurer is still required for **Ed Leaf**.
3. **HOLIDAY BRUNCH BUFFET**, 20 December 2015 from 11:30 A.M. to 2:30 PM at The Corinthian Yacht Club of Philadelphia. Adults: \$30.00. Children: \$15.00. You may bring guests. Please sign-up tonight or contact **Alice McElhinney**. [Note: We have sixty people signed-up to attend.]
4. **DELAWARE VALLEY CHAPTER OF THE STEAMSHIP HISTORICAL SOCIETY OF AMERICA (SSHA)** will be joining us at the Holiday Brunch Buffet and 11 persons from their group will be attending.
5. **SEAMEN'S CHURCH INSTITUTE:** **Mike Weaver** reported the delivery of ditty bag items were delivered. Thanks to all who contributed to this cause.
6. **COMMITTEE REGARDING THE WEBSITE AND THE QUARTERDECK:** **Spencer Anderson**, **John Bulloch** and **Jim MacIntyre** are to report: **Spencer Anderson** showed us how the website was up and running! Kudos to **Spencer** and **Todd Wardwell**!

NEW BUSINESS:

7. **PARADE OF LIGHTS** at ISM on 12 December at ISM: **Joe Jordan** reported that we'll have 3 tables outside the **SHACK** to display our ship models with lights!
8. **ELECTION OF OFFICERS FOR 2016:** Pursuant to the **PSMS Rules**, the following persons were elected by voice vote: President: **Fred Signor**; Vice-President: **Jim Wheeler**, Secretary/Editor: **Spencer Anderson**, Treasurer: **Ed Leaf**.
9. **SMS RULES, ARTICLE IV – NOMINATION AND ELECTIONS.** The changes were accepted and will be used in the nomination and election for new PSMS officers in 2015.
10. **NOMINATING COMMITTEE:** Pursuant to the Rules, the President appointed **Spence Delin**, **Joe Jordan** and **Mike Zimmerman** to the Nominating Committee.
11. **BOOK SIGNING:** **Harry Kyriakodis** had books for sale and personally autographed.
12. **NEXT PROGRAM: TO BE ANNOUNCED**
13. **DRAWING of 50/50.**
14. **ADJOURNMENT** at 12.
15. **REFRESHMENTS & HOLIDAY PARTY:** Thank you to **Pat Leaf** and others who brought so any special dishes!

Respectfully submitted,

Alice McElhinney, Secretary/Editor



PSMS *DECEMBER* MEETING



PSMS *DECEMBER* SHOW N' TELL



1. **Spence Delin:** The United States Training ship *Boxer*, a scratch built model in 3/16 scale, was brought in by **Spence** who reviewed the work on the gratings shown last month and other new deck items including two of the five boats that the *Boxer* carried. "These two boats are constructed like a whiskey barrel with planks and hoops."
2. **Craig Bennet:** **Craig** had a model of the *HMS Jupiter*, a 1970s frigate built from an Airfix kit in 1/600 scale augmented with decals from Rosin Shipyard. **Craig** plans to build 3 other ships that participated in the celebration of Queen Elizabeth II's 25th anniversary.
3. **Joe Gudonis:** One part of **Joe's** large stamp collection is devoted to stamps with ships on them. He currently has ship stamps from 188 countries. He brought to the meeting about 80 stamps mounted on a board and discussed both collecting stamps and the ones he was presenting to us in his display.

PSMS *DECEMBER* SHOW N' TELL



4. **Mike Zimmerman:** Mike also brought a nautical collector's item – an Eskimo kayak built by an Alaskan native who carved the boat and its occupant using fossil walrus ivory. Mike brought the model on a visit to Alaska in the 1960

5. **Francine Serratore:** The FGS *Brandenburg*, a ship from the mid 1990s is being scratch built with some detail by CnC models in 1/96 scale. Francine listed materials used as balsa/plywood, epoxy resin, stainless steel, evergreen/plastruct plastic, Owl eyes, brass and etc.

6. **Mike Weaver:** At our White Whale sale Mike purchased a started/never finished model of the USS *Kersage*. He has salvaged and constructed parts for some that were missing and is progressing with what looks to be a fine model.



HOLIDAY BRUNCH BUFFET! 🎄



HOLIDAY BRUNCH BUFFET! 🎄



The Philadelphia Ship Model Society's (PSMS) Holiday Brunch Buffet was held at The Corinthian Yacht Club of Philadelphia, 20 December 2015. Nine members/guests of the Delaware Valley Chapter of the Steamship Historical Society of America(SSHSA) Photographs taken by Rick Rathgeber and Alison McElhinney Petersen.

Now hear this ...



The Independence Seaport Museum is gaining ground in its restoration of the USS *Olympia*, the oldest steel warship afloat in the world. But it's been a slow process that may rely on Gov. Tom Wolf approving millions in grant funding. Restoration for the 123-year-old ship docked at Penn's Landing comes at a price tag of about \$14 million—including \$1 million just to move the ship and \$6 million for restoration work on the aging hull and deck. "That's the biggest challenge, raising the funds," said President and CEO John Brady. [See Jun 2, 2015 story by Fran Hilario in the *Philadelphia Business Journal*.]

Become a Member of ISM ...Independence Seaport Museum members receive free admission to the Museum, Workshop on the Water, the cruiser *Olympia* (shown above) and submarine *Becuna*, as well as invitations to exhibit openings, discounts in the gift shop, special member pricing for special programs and events and preferred access to boating opportunities on visiting tall ships.

Membership levels: Individual - \$45 (benefits apply to one person); Family - \$75 (benefits apply to up to five people in the same household); see their website for other levels.

NOTE: As a member of PSMS you are considered a **VOLUNTEER** at ISM—in addition to working in the SHACK, you are encouraged to volunteer at other events sponsored by the museum!

See the different areas where we are needed and –

VOLUNTEER!

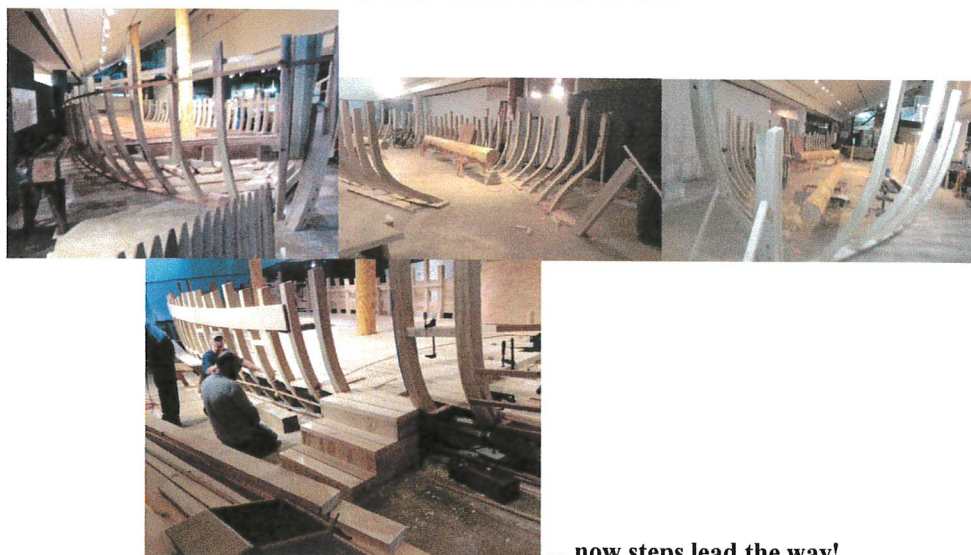
NOTE: All volunteers need to sign in and out from the museum from now on. The sign in book is located by the front desk on the podium. Boat shop volunteers will continue to sign in and out at the boat shop. Ships volunteers will sign in and out on the ships, unless they are coming into the museum and then they would sign in and out there as well. For PSMS, you will also need to sign in and out at the front desk.

Therefore if there is an emergency we will know who all is in the building at that time. If there is an emergency inside the museum, please exit the building and meet at the Walnut Street steps. For those on the ships, you will meet on the landing in front of the ships.

If you have been by the museum lately, you will have noticed the big changes happening on our galleries. We have taken down a large part of the main exhibit to make way for our new schooner, *Diligence II*. It is exciting too for the Seaport Museum and we hope you can come down and lend a hand. (See pictures on the next page.)

Now hear this continued ...

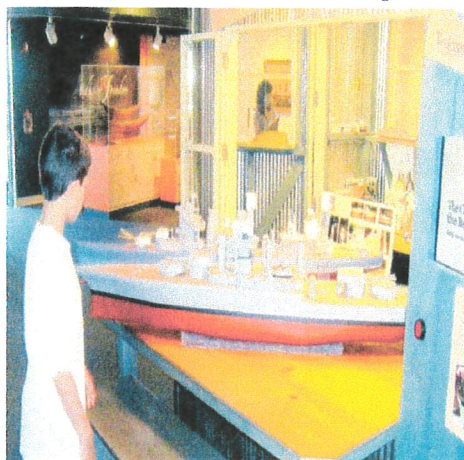
***DILIGENCE II* UNDER CONSTRUCTION AT ISM**



... now steps lead the way!



It's up to us to keep the lights "on" in the SHACK!



THE SHACK

Keep the lights on! Volunteer! Contact Joe Jordan (jjvtown@aol.com).



NOTE: Steamship Historical Society of America

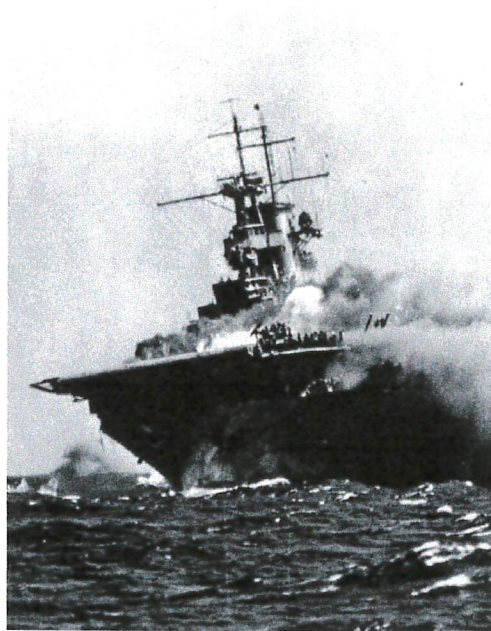
meets the third Sunday of each month at ISM from 2-4:30 PM. Visit their website at

<http://www.ssha-delawarevalley.org/>



Now hear this continued :

The Conquering Tide: War in the Pacific Islands, 1942-1944 by Ian W. Toll



Review by WALTER R. BORNEMAN

The U.S.S. Wasp on fire after being torpedoed by a Japanese submarine in August 1942. Credit Photograph from Kingendai Photo Library/AFLO.

World War II in the Pacific embraced half the globe across a watery expanse dotted with jungle-clad islands and barren coral atolls. In the decades before Japan's attack on Pearl Harbor, the United States war-gamed responses to Japanese aggression in a series of "Orange" plans. These envisioned a rapid counterattack westward across the central Pacific via some combination of the Gilbert, Marshall, Caroline and Mariana Islands to the Philippines.

After Dec. 7, 1941, the magnitude of this undertaking became even more evident when Gen. Douglas MacArthur, who had assumed command of Allied forces in Australia after escaping from the Philippines, proposed an alternate strategy. MacArthur passionately argued for a return to the Philippines through the southwest Pacific, but the United States Navy stubbornly clung to a line of advance across the central Pacific.

Ian W. Toll, no stranger to students of naval history who are familiar with his acclaimed "Six Frigates: The Epic History of the Founding of the U.S. Navy," has already chronicled the sea battles of the first six months of the war in "Pacific Crucible: War at Sea in the Pacific, 1941-1942." "The Conquering Tide" picks up where "Pacific Crucible" left off and provides a gripping narrative of the central Pacific campaign.

THE CONQUERING TIDE: War in the Pacific Islands, 1942-1944, by Ian W. Toll Illustrated. 622 pp. W.W. Norton & Company. \$35.

Now hear this continued :

THE NAUTICAL RESEARCH GUILD

"ADVANCING SHIP MODELING THROUGH RESEARCH"

Annual membership includes our world-renowned quarterly magazine, Nautical Research Journal, which features photographs and articles on ship model building, naval architecture, merchant and naval ship construction, maritime trade, nautical and maritime history, nautical archaeology and maritime art.

Other benefits include discounts on annual conferences, ship modeling seminars, NRG products and juried model competitions which are offered exclusively to Guild members. We hope you will consider joining our ongoing celebration of model ships and maritime history.



YEARLY
MEMBERSHIP
\$48.00 USA
\$60.00 Foreign



For more information contact us at: www.thenrg.org or telephone 585-968-8111



THE SSMA JOURNAL:

Lots of news and pictures about PSMS in their editions. In the **SSMA Journal's 3rd Quarter, October** issue, they have reprinted **Ron Spicer's** story on his building of an Encore plastic kit of the *USS Olympia*, as well as the picture and caption from the "Now hear this ..." section of **PSMS' QUARTERDECK**.

Become a member of **SSMA**; Annual dues are **\$25** and it should be sent to **Lee Stewart, SSMA Clubs/Membership Director, 7325 176th Street SW, Edmonds, WA 98026**. Your check should be made payable to **SSMA**. Visit them on the web at **SSMANA.ORG**.

URGENT: Please let our President, Tom McElhinney, know if you are a current member of the SSMA (shipshape51@verizon.net).

