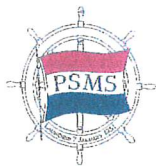


9/15



# QUARTERDECK

THE NEWSLETTER OF THE PHILADELPHIA SHIP MODEL SOCIETY

Launched 7 January 1931

<http://philadelphiahipmodelsociety.com>

September 2015

Philadelphia, Pennsylvania

## COAST DAY & FUN FLOAT ON 12 SEPTEMBER



Spencer Anderson, Chair of the FUN FLOAT Committee, urges PSMS members to be at ISM by 8 a.m. this Saturday, 12 September to help set up for this event which is part of Philadelphia's COAST DAY. We will begin at 10 a.m.; awards presented at 2 p.m., and all ships out of the water at 4 p.m., followed by clean-up. Please let Spencer know if you are able to participate: Spencer Anderson ([Tallpine7@aol.com](mailto:Tallpine7@aol.com)).



## SOARING HEAT; LEBOVICS DISCUSSES OLYMPIA AT PSMS!

The 819<sup>th</sup> meeting of the Philadelphia Ship Model Society (PSMS) was held at the Independence Seaport Museum (ISM) on the third day of September 2015. President Tom McElhinney called the meeting to order at 1904 and opened with the Pledge of Allegiance. Twenty-four persons attended including the guest speaker, Jesse Lebovics.

(continued page 3)



Jesse Lebovics, Director of Historic Ships at the Independence Seaport Museum (ISM), held a captivated audience as he explained how well ISM is doing in their quest to raise funding to restore the USS *Olympia*—the oldest surviving steel warship in the world—she has been a Registered National Landmark since 1964, National Engineering Landmark since 1977, National Historic Maritime Landmark (SNAME) since 1988, and Official Project Save America's Treasures since 1999. He thanked PSMS' Ron Spicer for providing a beautiful model of the *Olympia* which is used in their presentations for funding. Jesse also shared how the funding is allowing them to currently do work of the *Olympia*.



## INSIDE THIS ISSUE

- 4 CHANGE IN PSMS RULES
- 6 JULY PROGRAM
- 7 JULY SHOW N' TELL
- 11 KATRINA
- 17 ST. MICHAELS, 3 & 4 OCTOBER



## NEXT MEETING ... 1 OCTOBER

**Captain Peter H. Orvis, USN (Ret)**



### RETURNS BY POPULAR DEMAND!

**Program: SS *NORMANDIE*, the French Ocean Liner--Seized by US Authorities and Renamed the USS *Lafayette***

The SS *Normandie* was an ocean liner built in Saint-Nazaire, France, for the French Line Compagnie Générale Transatlantique (CGT). She entered service in 1935 as the largest and fastest passenger ship afloat; she is still the most powerful steam turbo-electric-propelled passenger ship ever built.

During World War II, *Normandie* was seized by US authorities at New York and renamed USS *Lafayette*. In 1942 the liner caught fire while being converted to a troopship, capsized onto her port side and came to rest on the mud of the Hudson River at Pier 88, the site of the current New York Passenger Ship Terminal. Although salvaged at great expense, restoration was deemed too costly and she was scrapped in October 1946 (Wikipedia).

**Captain Orvis** was commissioned in the Navy in November 1951 from Class 2 of Officer Candidate School, Newport, Rhode Island. He served in nine ships and had five sea commands—four ships and a squadron. He also taught Ordnance and Gunnery at the U.S. Naval Academy and served with the U.S. Marine Corps as a naval gunfire officer. He retired from the Pentagon in 1974.

He then joined Hollansea Signaalapparaten BV, a Dutch maker of Naval combat systems. After living in Holland for six years he returned to the U.S. as their representative. He retired again at the end of 1991. **Captain Orvis** now resides in Arlington, Virginia, with his wife, **Jean**. They have six children and eleven grandchildren.



### QUARTERDECK STAFF

**Editor:** Alice McElhinney ([alice9books@verizon.net](mailto:alice9books@verizon.net))

**Photographer:** Mike Weaver ([eghannah@gmail.com](mailto:eghannah@gmail.com))

**Distributor of B/W Edition:** Ed Leaf ([pjlebl@comcast.net](mailto:pjlebl@comcast.net))

**Consultants:** Ron Spicer ([rsnaldespicier@aol.com](mailto:rsnaldespicier@aol.com))

Jerry Kates ([AdvPr1920@aol.com](mailto:AdvPr1920@aol.com))

**Webmaster:** Spencer Andersen ([tallpine@aol.com](mailto:tallpine@aol.com))

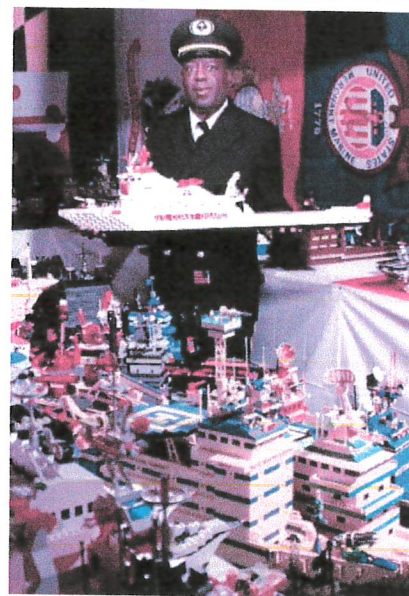
Letters to Editor: 7900 Ivy Lane, Elkins Park, PA 19027 USA;

Phone: +215-635-2988.



## COAST DAY

**SATURDAY, 12 SEPTEMBER:**



Discover all that Pennsylvania's coast has to boast at COAST DAY. This festival will take place on Penn's Landing at ISM on 12 September, from 11 a.m. to 4 p.m.

#### Coast Day activities include:

- Philadelphia Ship Model Society "Fun Float"
- TEACH FLEET - World's largest LEGO Ship Model Collection
- Tours of two Historic Ships – Cruiser *Olympia* & Submarine *Becuna*
- Kayak, rowboat and swan boat rentals inside the basin



## FORTHCOMING EVENTS

12 September: COAST DAY at ISM; PSMS will have a FUN FLOAT

1 October: 7 p.m. PSMS Meeting. Program: Captain Peter Orvis

3-4 October: Maritime Model Expo, St. Michaels, MD

5 November: 7 p.m. PSMS Meeting. Program WHITE WHALE SALE with John Oddo, Auctioneer

11 November: **VETERANS DAY**

3 December: 7 p.m. PSMS Meeting. Program TBA

20 December: HOLIDAY BRUNCH BUFFET, Corinthian Yacht Club, 11:30 a.m.-2:30 p.m.



### THE PHILADELPHIA SHIP MODEL SOCIETY

Launched 7 January 1931

(See listing of PSMS Officers and Board of Directors on page 14.)

The Philadelphia Ship Model Society (PSMS) meets on the first Thursday of each month at the Independence Seaport Museum (ISM) at 1900 hours. ISM is located at Penn's Landing, 211 South Columbus Boulevard, Philadelphia, Pennsylvania 19106. Guests are always welcome! (For detailed directions to ISM, please see our website at <http://phillyshipmodel.com>). PSMS' annual dues are \$35.00 for an INDIVIDUAL MEMBERSHIP; \$40.00 for a FAMILY MEMBERSHIP (includes member, as well as spouse with children FREE). When attending a meeting discounted parking is available at the garage entrance next to ISM. The hotel is now a Hilton Hotel at Penn's Landing. Please take your parking ticket to the front desk at ISM and have it stamped. This allows parking at the facility for \$12.00. Municipal parking is also available in front of ISM; however, the rates are higher and vary with the season. PSMS also reimburses attendees with \$5.00 toward parking.

The *QUARTERDECK* is the newsletter of the Philadelphia Ship Model Society and is published after each monthly meeting. Copyright © 2015 Philadelphia Ship Model Society. All rights reserved.



## PSMS SEPTEMBER MINUTES

(continued from page 1)

✓ **WELCOME:** Our speaker, **Jesse Lebovics**.

**SICK CALL:** **Alice McElhinney**, Secretary and Editor of the *QUARTERDECK*, will resign at the end of 2015. She has been diagnosed with a rare lung disease, Idiopathic Pulmonary Fibrosis.

**PROGRAM:** *USS Olympia*: Update on work being done thanks to new grants: **Jesse Lebovics** 7

**SHOW N' TELL:** Led by Vice President **Fred Signor**, please see pages 7, 8 & 9 of the *QUARTERDECK*.

✓ 50/50 Drawing: Purchase of tickets: **Tom McElhinney**

**BREAK:** Special thanks to **Pat Leaf** and all who brought items for the refreshment table

### **BUSINESS MEETING:**

The Secretary's minutes were approved as printed in the July-August *QUARTERDECK*. **Ed Leaf** presented the Treasurer's report and was approved.

#### **OLD BUSINESS:**

1. **PSMS ANNUAL PICNIC:** Thank you to **Jim** and **Betsy Nutt** for hosting the events at their **Bonnie Ridge Farm**. Please see page X of the *QUARTERDECK* for pictures from this event.
2. **The SHACK:** **Joe Jordan**. Please sign-up tonight or email that you can volunteer: **Joe Jordan** ([jjvtown@aol.com](mailto:jjvtown@aol.com))
3. **COAST DAY with PSMS FUN FLOAT:** **Spencer Anderson**: The PSMS "FUN FLOAT" and R/C demonstration has been scheduled for Saturday, September 12 in coordination with **Independence Seaport Museum** as part of a set of activities observing **COAST DAY**. Set up will start at 8 AM, the event will begin at 10 AM, awards will be presented at 2 PM, and all ships will be out of the water at 4 PM, followed by clean-up.

#### **FUN FLOAT COMMITTEE:**

<b>Spencer Anderson:</b>	<b>Committee Chair</b>
<b>Jim MacIntyre:</b>	<b>Islands</b>
<b>Jim Wheeler:</b>	<b>Check-in and Registration</b>
<b>Gerry Wiegand:</b>	<b>Ballots and awards</b>
<b>Joe Jordan:</b>	<b>Tables, chairs, stanchions, canopies</b>

#### **DAY OF EVENT:**

<b>Ed/Pat Leaf:</b>	<b>Fees and Registration</b>
<b>Mike Zimmerman:</b>	<b>Narration</b>
<b>Brian Padnes:</b>	<b>Photographer</b>

Each captain will be assessed a \$10 fee, which entitles them to unlimited hulls, and virtually unlimited time on the water.

Award for **People's Choice** and **Captain's Choice** will be presented, both determined by ballot. An award sponsored by **ISM**, known as the **Curator's Choice**, will be based on details most matching museum quality standards.

The focus will be on enjoying operating our models, appreciating others' models, and demonstrating our hobby to the public.

The immediate priority is sending e-flyers/brochures to our distribution. Assistance is requested to compile a distribution list that can be utilized so we do not have to create it from scratch each time.

Flyer for the event is on page 5 of the *QUARTERDECK*

4. **Website:** **Spencer Anderson**; need volunteers.
5. **Delaware Valley Chapter of the Steamship Historical Society of America:** Need volunteer to present a program (Meets on third Sunday of each month from 2-4:30 p.m. at ISM). **Francine Serratore** will email their president to learn about scheduling a program.
6. **34<sup>th</sup> NORTHEAST SHIP MODEL CONFERENCE & SHOW, 30 April 2016, New London, CT:** PSMS will be hosting this event. **Pat Leaf** reported that most positions are now co-chaired, but we need someone to work with **Ed Leaf** as treasurer. *Please volunteer!*

#### **NEW BUSINESS:**

7. **PSMS Brochure:** Thanks to **Ron Spicer**—PSMS brochure has been reprinted in time for **COAST DAY**, etc.
8. The **Executive Board** recommended that we make the following donations:
  - a) **USS New Jersey Thanksgiving Dinner: \$50.00.** Motion made and seconded that this is approved.
  - b) **Independence Seaport Museum: \$450.00.** Motion made and seconded that this is approved.
  - c) **Seamen's Church Institute:** Again collect items for their Ditty Bags. Motion made and seconded that this is approved. **Pat Leaf** volunteered to collect items in **October** and **November**. We are hopeful that **Mike Weaver** will deliver our collection, as he has in past years. (See next page.)

(PSMS Minutes continued next page)

**NEW BUSINESS continued:**

9. **Holiday Brunch Buffet, 20 December 2015, 11:30 a.m.-2:30 p.m., Corinthian Yacht Club. NEWS FLASH! Nora Berlinger has just advised that the Corinthian Yacht Club will honor last year's splendid menu for the SAME price this year--\$30.00 per person (tax and gratuity included; cash bar)! Reservations start in October!**
10. **QUARTERDECK:** The following committee was appointed to prepare a report at the October meeting to make recommendations to PSMS prior to the Nominating Committee report. **Alice McElhinney** will serve her term as **Secretary/Editor** through December 2015—or 4 more Issues of the **QUARTERDECK**—then she is retiring. The committee will be: **Spencer Anderson** (Chair), **Jim MacIntyre**, and **John Bullock**.
11. **Executive Board is recommending a change in the Rules to allow the nominating committee to be appointed to October from November.** A motion was made and seconded that we proceed in posting this in the **QUARTERDECK** with the deciding vote to be taken at our October meeting. The proposed change to the PSMS Rules is in **red**:

**ARTICLE IV – NOMINATION AND ELECTIONS**

SECTION 1: The nominating committee shall consist of three (3) members, not candidates for office. The committee shall be appointed by the President at the regular **November** membership meeting. This committee shall present a slate of nominees for the offices of President, Vice President, Secretary, and Treasurer to the entire membership through the newsletter, prior to the December meeting.

SECTION 2: At the December meeting, one member of the nominating committee shall conduct the nominations and elections. Additional nominations will be accepted from the floor until a motion is made and carried to close the nominations for each office.

SECTION 3: All nominees, including the committee slate, shall be present at the December meeting or submit their written acceptance of the nomination. The membership shall vote for each office after nominations for all offices are closed. When there is more than one nominee for any office, the voting for that office shall be conducted by secret ballot. Each election shall be carried by a majority of the voting members who are present.

SECTION 4: Officers and Executive Board members shall assume their official responsibilities at the beginning of the January meeting.

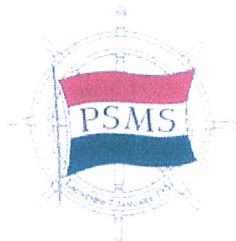
12. 3 October and Sunday, 4 October: **Jim Wheeler** [jrwheeler@att.net](mailto:jrwheeler@att.net) and please the note invitation and registration form which has been reprinted on pages 17 and 18 of the **QUARTERDECK**.
13. **Next Program:** **Captain Peter Orvis** will present a program on the *SS Normandie*, a French ocean liner which during WWII was seized by US authorities in New York and renamed *USS Lafayette*.
14. **DRAWING of 50/50:** The winner is **John Bullock**.
15. **ADJOURNMENT** at 2114 followed by clean-up!

Respectfully submitted,  
**Alice McElhinney, Secretary/Editor**



**Ditty Bag Wish List—PSMS will be collecting these items at our October & November meetings for the Seamen's Church Institute of Philadelphia and South Jersey. They need our support and these items are needed! Thank you! Hats & Scarves (dark colors only & may be store bought,), Razors, Cans of Shave Cream (7-11 oz. Can), Toothbrushes, Toothpaste (4-6 oz. Tubes), Combs, Heavy socks, Work Gloves, Deodorant Sticks, Mini Sewing Kits, Nail Clippers, Pens and Writing Paper with Envelopes.**





**Philadelphia Ship Model Society**  
presents an  
**R/C Ship Model "Fun Float"**  
and  
**Radio Controlled Ship Model Demonstration**

The Philadelphia Ship Model Society is sponsoring a **"Fun Float"** for all R/C Ship Modelers who would like to run their R/C electric and steam powered models in the classic waters of the Delaware River at Penn's Landing, in the boat basin next to the Independence Seaport Museum. The public is invited to observe the demonstration at no charge, get a close look at the ship models, and even vote for their favorite model.

R/C Ship Model Captains will be charged a flat fee of \$10 for unlimited hulls and virtually unlimited time in the water. The sailing area will be protected and islands will be dispersed to define a sailing channel.

Time: 10:00 AM to 4:00 PM  
September 12, 2015  
Awards presented at 2:00 PM

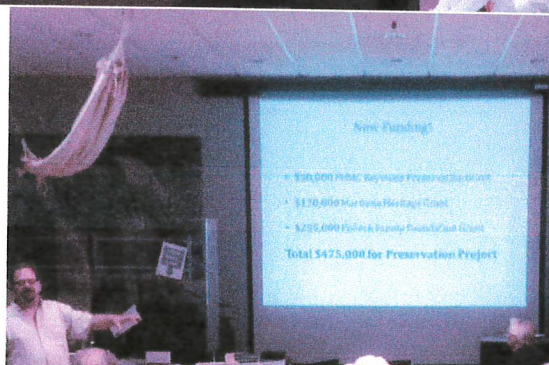
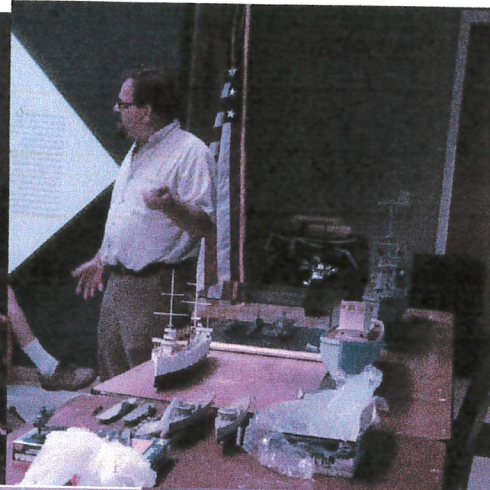
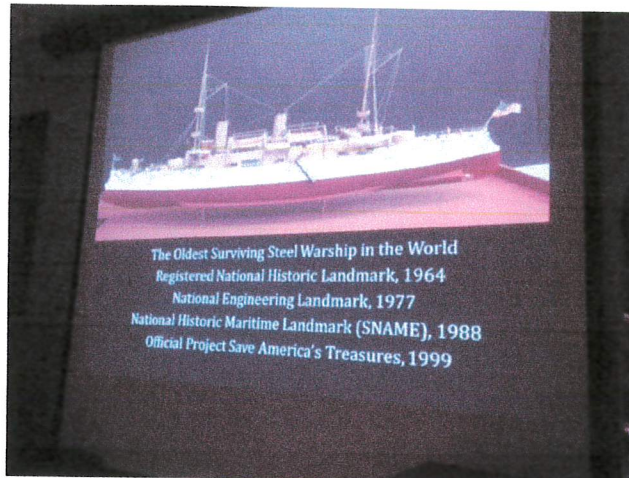
Awards: People's Choice  
Captain's Choice  
Curator's Choice \*

Please contact Spencer Anderson at 201.970.2897 or at [tallpine7@aol.com](mailto:tallpine7@aol.com) to request additional information.

\* Award sponsored by Independence Seaport Museum



# PSMS *SEPTEMBER* MEETING



Say hello to the **OLYMPIA** cofferdam unit! Over the last couple of years, a method of interim repair has been devised for the ever-corroding "water & weather line" of the ship. The waterline being arguably the weakest portion of the hull, the crew jumped at the opportunity to work up to 7 feet below the waterline to perform interim repairs to the moon-like surface. The cofferdam is a proven technology for hull repair while in the water. (Learn more about the cofferdam on Independence Seaport Museum's **Facebook** pages.

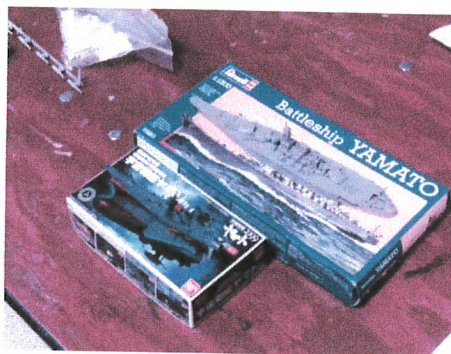




## PSMS *SEPTEMBER* SHOW N' TELL



**Ted Dyer** brought several models including some made when he was a teenager. A current project was a plastic Revel kit (1/220 scale) of the *Cambeltown*, an American 4 stack destroyer that **Ted** expects to complete in 2016. The best feature of the model is the large scale in plastic of a significant destroyer class.



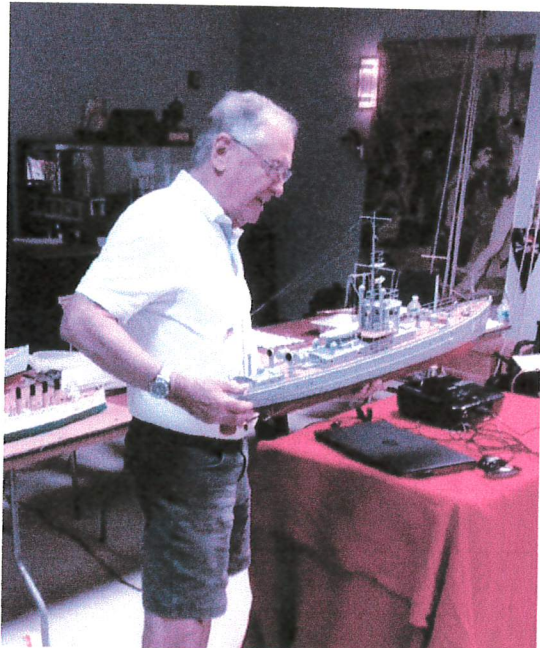
The two kits pictured are very different interpretations of the Japanese WWII battleship *Yamato* (Revell edition) and the anime *SPACE BATTLESHIP Yamato* (Japanese kit). In an extended quite interesting report **Harry Kyriaodis** provided information on both of his models.



## PSMS *SEPTEMBER* SHOW N' TELL



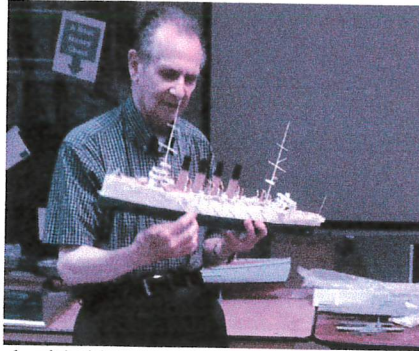
**Mike Zimmerman** used the rescue scene in the movie **CAPTAIN PHILLIPS** as the inspiration for the diorama he presented. The models include **USS Boxer**, **USS Bainbridge**, **USS Halyburton**, **MVP Maersk Alabama**, and one of the *Alabama's* lifeboats. All models are in 1/700 scale except for the *Alabama* which is 1/2000 because it has already left the scene of action. The *Alabama* is also the only paper model, the remainder are plastic from various manufacturers.



The subchasers returned! **Joe Jordan** wins the building race as he presented his completed model. The scale is 1:35, a Dumas kit. The original sub chasers were built in many locations; SC 68 came from Mathis Yacht in Camden, NJ, launched 5/18/18. **Joe** found no history of the ship. He used 3 motors, the middle cuts out when the rudder is hard over. One big problem was ballast, **Joe** needed 6-7 ounces to stabilize the model (Perhaps a clue to how these ships sailed?).



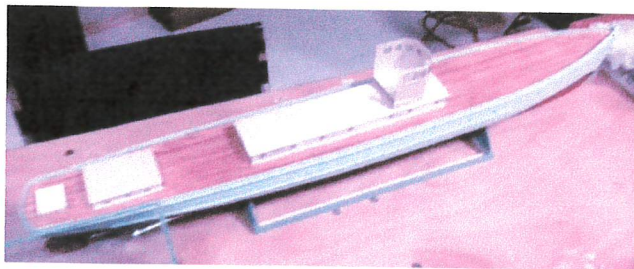
## PSMS *SEPTEMBER* SHOW N' TELL



**Ed Leaf** returned with his now 75% complete *Varyag*, a Russian naval vessel from 1901. This is a scratch built model for which **Ed** is now providing the details.



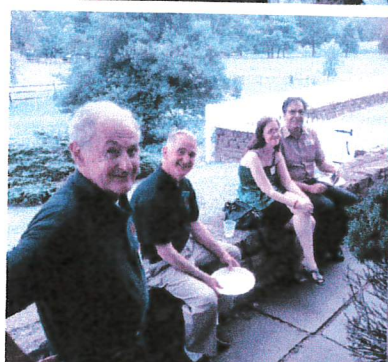
**Francine Serratore** brought her model of the *USS Olympia*, a Protected Cruiser that was Dewey's flagship in the battle of Manila Bay. **Francine** has a scratch built model in 1/96 scale. This will be a rebuild with a new superstructure using better plans, a new rudder post for RC use, motor mounts and radio gear.



In the "Subchaser Chase" **Fred Signor** started late but is moving along as can be seen from these two pictures. This is the Dumas 1/35 kit mentioned earlier. Both ships are pictured below. **Fred** lists his work as 50% completed. Like most builders of these Subchasers, Fred is "somewhat" satisfied.



# PSMS *Picnic* AT BONNIE RIDGE FARM



*The ninth August was a picture perfect day! A special thank you to Jim and Betsy Nutt for sharing their beautiful Bonnie Ridge Farm with PSMS members and guests. Regretfully we had some camera problems, but we're happy to have these to record the day. The food was bountiful and delicious and some enjoyed fresh apples and blackberries from the Nutt's gardens. Yes, the swimming pool was used by some R/C enthusiasts. A good time was had by all!*







# KATRINA

**USS *Iwo Jima*, one of the ships deployed to New Orleans after Hurricane Katrina hit. This QUARTERDECK feature is in tribute to those who served and to honor those who could not tell their story.**

PSMS members **Alice** and **Tom McElhinney** are New Orleanians—**Alice** by birth; **Tom** by adoption—he moved to the area when he was 5 and graduated from Tulane. “Where will you go if the ‘big one’ hits?” has long been a conversational piece among people living in NOLA. In May 2015 we attended **Tom’s** 50<sup>th</sup> reunion from Tulane and spent an evening reminiscing with friends from his class. Two were residents in New Orleans and they were asked the proverbial question.

Then Katrina hit—just three months after the college reunion—causing unprecedented damage to numerous Louisiana and Gulf Coast communities. During the hours and days after Hurricane Katrina breaches in the levee infrastructure resulted in flooding in approximately 80% of New Orleans.

Because of our conversation at the reunion, we were able to track our friends. Both friends and their families left NOLA before Katrina hit. (Many citizens without cars or public transportation had no choice but to remain in their homes. Drowning was the major cause of death for those 75 and older.)

After weeks of waiting, our friends were finally allowed to return: “It was like entering a different country showing ID for entrance. Nothing prepared us for the void we witnessed—we didn’t recognize our own city.” (Ten years ago the ePodunk census indicated Montgomery County, Pennsylvania had 297,434 houses. NOLA lost 215,000 houses—more than 2/3 of the houses in Montgomery County.) Wikipedia reports in its wake of 175 mph winds, Katrina cost 1,836 lives. When Hurricane Sandy hit the NJ/NY area their 115 mph winds cost 233 lives.

Our friends found their homes devastated and uninhabitable (both residences were in the university section of NOLA). One was given a trailer by FEMA, but no key to unlock the door. After months of senseless bureaucracy, these friends relocated to Texas where they still live. After two years of endless problems, the other family was able to return to their reconstructed home and live there today.

Many were not as fortunate. They found their insurance did not cover their loss. Furthermore, even today many people are still waiting for settlement of their insurance claims while they are required to pay a mortgage for a house that no longer exists. Justice? “Let justice roll down like waters, and righteousness like an ever-flowing stream” (Amos 5:34).

Now let’s hear the words from another PSMS member, **Todd Wardwell**, who served in NOLA after Katrina. Here is his account. Thank you **Todd** for your service.

“My story actually started with a new move with my family to sunny Los Angeles, CA. I had spent the previous 4 years with the Atlantic Strike Team, an elite disaster response team located in Fort Dix, NJ. I had been deployed away from my family on average 250 to 320 days per year for my whole tour, and I was looking forward to slowing down a bit with a training billet. This wasn’t to be, as Hurricane Katrina was headed for the Gulf Coast. The Coast Guard has a different response methodology when it comes to disasters and disaster response. We recognize the short-falls of moving resources into a disaster area, and we will typically try and “get the chess pieces moving early” to bring assistance to bear. As I had only been in CA for less than a week, the call came in for skilled disaster responders who could operate with little or no command and control, and with limited resources.

“I was sent to Houston, TX 6 hours after Katrina made landfall, as that was the nearest functional airport, and with my response kits packed into my rental 4x4, I headed across the Gulf Coast to a make shift command post in Baton Rouge, LA (80 miles north of NOLA). The remnants of the storm made the drive brutal, and at times visibility through the rain was less than 100



feet. The herculean efforts of our aviators was seen all over TV, and while the other CG responders slept and worked out of rental cars, the scope of the problem became slowly clear. As our helicopters finished their humanitarian efforts, and army Blackhawks were brought back to the US from bases all over the world, we needed to get creative to get our eyes in the sky. Volunteers and paid contractors brought in old UH-1 Huey helos left over from the Vietnam War era. (The pilots were also from that era, but skilled and more than a little over enthusiastic for the mission!) Looking down from those helicopters, with the streets of NOLA flooded, you could almost imagine that the streets were the deltas of South East Asia until you realized they were a devastated American city.

"While the human drama was slowly increasing at the Superdome, the crippling lack of infrastructure was hindering both victim and responders alike. There was no way to move the population out, and no way to repair enough infrastructure to support them. The solution was to bring shelter, food and fresh water in from outside and that was from the sea.

"Maritime school ships, older passenger liners, and even military hospital and troop ships were getting ready to head to NOLA, but the channel had to be checked and cleared prior to those vessels arriving. With no CG vessels in the area, I was able to contract an oil spill response vessel, and hire hazmat and oil spill removal workers to clear the channel. This was daunting, as massive barges full of burning grain, and 10 story oil tanks were seen free floating in the channel. We were able to render the channel usable after only 5 days of grueling debris clearing in 98 degree, high humidity weather, we were able to get the first upbound vessels ready for their cautious crawl up river.

"My deployment area was primarily Venice, LA (72 miles south of NOLA—literally on the tip of the state), but as the lifesaving mission stabilized, there was a need to enter parts of the city and check for contamination and broken infrastructure. While checking an area near Tulane Hospital my radiation meter went off. We at first thought it was broken, and then we were able to locate the source. It was hundreds of packages of chemotherapy seeds scattered all over a park near the hospital. We then called in a remediation team from the Department of Energy, who found similar radioactive hazards near other hospitals. If we had not had our meters on, no one would have ever found those deadly tiny toxic needles slightly bigger than a human hair.

"My tour lasted 3 brutally hot weeks, toiling in a ruined city. Amid the debris were dead cows, pets, and even people. Some of the dead were what we referred to as "old dead" or coffins which had floated out of the crypts they were interred in, pushed up by the flood water.

"Katrina was a tragedy on every level. What is not often talked about amid the back drop of human suffering is the environmental damage. Katrina was the largest combined oil and hazmat spill in US history. While the Exxon Valdez was about 10 million gallons of crude oil spilled, present estimates put the spills caused by Katrina/Rita at 13 million gallons of oil, and an additional 1 million gallons of various hazardous materials. It would only be massively eclipsed a mere 5 years later by the BP spill in the same region, but that was another deployment."

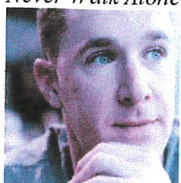
*Chief Warrant Officer Todd Wardwell, US Coast Guard, and member of PSMS*

As a native of New Orleans, it is still difficult to see the haunting images coming from New Orleans and the Gulf coast. **Todd** shares some his photographs on the next two pages, as well as a link to the Coast Guard's new documentary.

We are thankful for volunteers like **Richard Berlinger** (also a PSMS member) who in the spring of 2006 went with 9 others from his Jenkintown church on a mission trip to NOLA. He reports:

"We toured the Lake Pontchartrain area where there were a few occupied homes but without utilities or police or fire protection. One abandoned home was filled with mud, upset furniture and clothing and a refrigerator which was roped shut and never emptied. Can only imagine the mold and maggots and smell inside. We were hosted by a church across the River [Mississippi], near the 9<sup>th</sup> ward which was devastated. The only signs of habitation were concrete pads, steps leading up to nowhere and pipes coming out of the ground. From recent news photos, it looks much the same, at least in places. A very frustrating thing was seeing dozens of new FEMA trailer homes on storage lots, tied up by City bureaucrats who would not cut through paperwork, according to the local newspaper, *The Picayune-Times*. My take was there was government incompetency from the top down. We were assigned to demolish a shot-gun house close to the river and below the dike that didn't protect it or others on the block. To get to the structure, we had to remove many vines and brambles that even covered part of the roof, then removed the tin roof and begin to preserve the planking and timbers for reuse. A dirty, hot job taking several days. The old city did not flood, so one evening after a barge dinner cruise; we enjoyed coffee and beignets at Café du Monde. On our last night we dined at Galatoire's—including serenading an 80 year old matriarch and her family. Instead of *Happy Birthday*, she requested *You'll Never Walk Alone*. Destruction, renewal and celebration—it was quite a week!"

**Richard W. Berlinger**

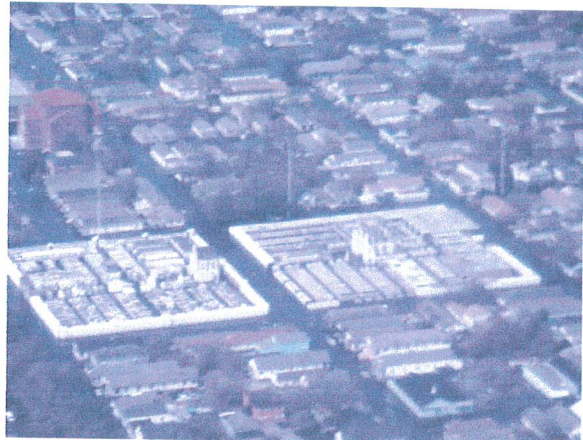


The USS Navy's story "Hurricane Katrina: Ten Years Later" is broadcast by **Andrew Johnson** who is an active duty Mass Communication Specialist (MC) in the United States Navy and is an award winning visual communicator—who also happens to be Alice's second cousin. You will be able to see and hear relief efforts through the eyes of the Skipper of the USS *Iwo Jima*: [http://www.navy.mil/ah\\_online/ftStory.asp?issue=3&id=90753](http://www.navy.mil/ah_online/ftStory.asp?issue=3&id=90753).





NOLA City Park underwater: Seen from my Huey--3 days post Katrina.



Cemeteries like this one with their above ground crypts broke open. Helo Ovflight 3 days post Katrina.



Even parking lots that we would normally use as staging areas were unusable.



Grain barges auto igniting due to rotting grain and moisture. Down river it almost smelled like baking bread. (Those barges are supposed to be in the river.)

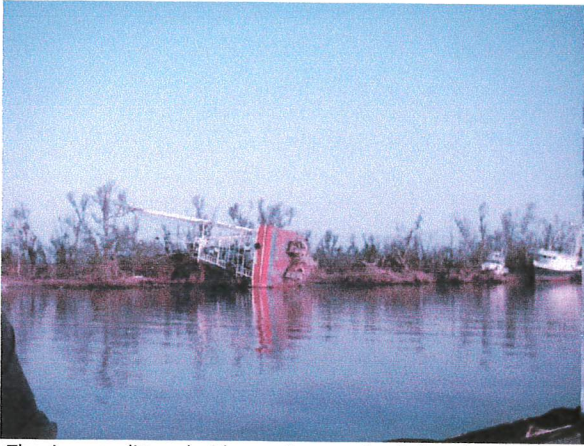


Southern Neighborhoods. I can assure you it was worse up close.

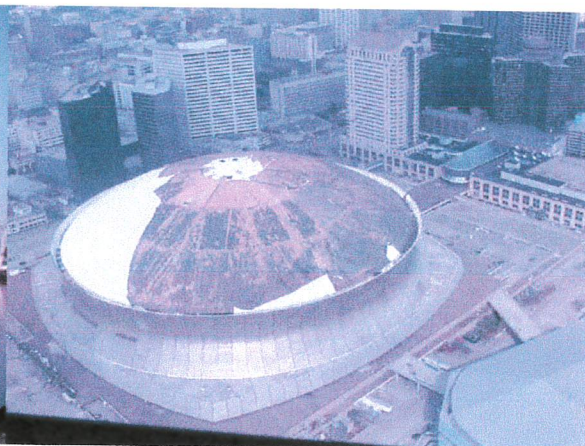


We assisted the Army and the DMORT (disaster mortuary response team) with checking room to room in the hospitals for deceased. Mercifully there was only one, and that person was already in the morgue. This is where we found the radiation contamination.





The river was littered with vessels, some just below the surface. We moved what wrecks we could to the side, and marked the rest.



Superdome over flight. Personnel evacuated.



Clearing debris wasn't made easier by rotting and sometimes exploding cow carcasses like this one.



What would river ops be without these guys.....



Securing a tank to a break wall, we then pumped the oil into a temporary tank on shore.



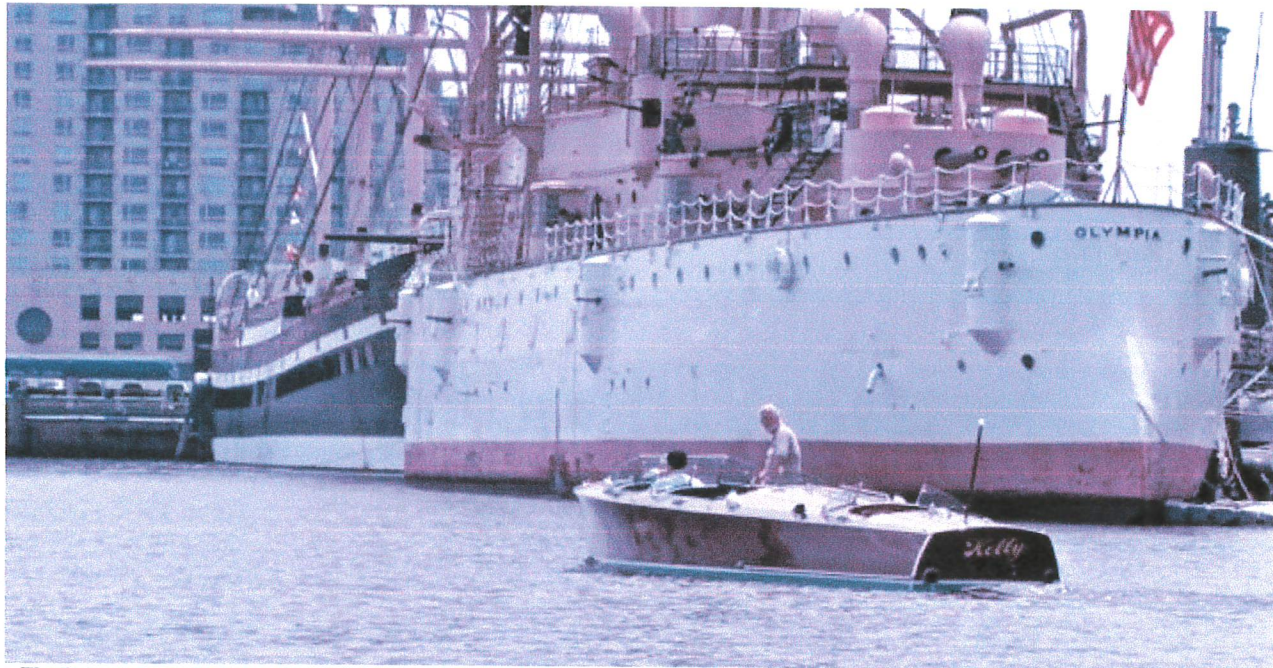
When we gave the all clear, vessels started coming up river. This was SUNY Maritime's Training vessel that was used as housing.

*Photographs by Todd Wardwell*

The Coast Guard recently released a documentary here is a link:Paratus 14:50  
<http://www.paratus1450.com/>



## Now hear this ...



The Independence Seaport Museum is gaining ground in its restoration of the USS *Olympia*, the oldest steel warship afloat in the world. But it's been a slow process that may rely on Gov. Tom Wolf approving millions in grant funding. Restoration for the 1123-year-old ship docked at Penn's Landing comes at a price tag of about \$14 million—including \$1 million just to move the ship and \$6 million for restoration work on the aging hull and deck. "That's the biggest challenge, raising the funds," said President and CEO John Brady. [See Jun 2, 2015 story by Fran Hilario in the *Philadelphia Business Journal*.

**Become a Member of ISM ...**Independence Seaport Museum members receive free admission to the Museum, Workshop on the Water, the cruiser *Olympia* (shown above) and submarine *Becuna*, as well as invitations to exhibit openings, discounts in the gift shop, special member pricing for special programs and events and preferred access to boating opportunities on visiting tall ships.

Membership levels: Individual - \$45 (benefits apply to one person); Family - \$75 (benefits apply to up to five people in the same household); see their website for other levels.

**NOTE:** As a member of PSMS you are considered a **VOLUNTEER** at ISM—in addition to working in the SHACK, you are encouraged to volunteer at other events sponsored by the museum!

*See the different areas where we are needed and –*

## VOLUNTEER!

**NOTE:** All volunteers need to sign in and out from the museum from now on. The sign in book is located by the front desk on the podium. Boat shop volunteers will continue to sign in and out at the boat shop. Ships volunteers will sign in and out on the ships, unless they are coming into the museum and then they would sign in and out there as well. For PSMS, you will also need to sign in and out at the front desk.

Therefore if there is an emergency we will know who all is in the building at that time. If there is an emergency inside the museum, please exit the building and meet at the Walnut Street steps. For those on the ships, you will meet on the landing in front of the ships.

If you have been by the museum lately, you will have noticed the big changes happening on our galleries. We have taken down a large part of the main exhibit to make way for our new schooner, *Diligence II*. It is exciting too for the Seaport Museum and we hope you can come down and lend a hand. (See pictures on the next page.)



***Now hear this continued ...***

## ***DILIGENCE II* UNDER CONSTRUCTION AT ISM**



### **First Plank on Schooner *Diligence***

Workshop on the Water staff and volunteers began planking on *Diligence*, a full-size waterline model of American topsail schooner, *Diligence of 1797*.

Click [here](#) to watch the video.

When completed in 2016, visitors will be able to board the 102 foot vessel as sailors safeguarding the young America. *Diligence* will be the centerpiece of our upcoming exhibit *Patriots & Pirates*.



## **THE SHACK**

Keep the lights on! Volunteer! Contact Joe Jordan ([jjvtown@aol.com](mailto:jjvtown@aol.com)).

### **GET YOUR REWARD!**

Volunteers have the opportunity to receive rewards for the hours they give to the museum. By logging your volunteer hours in VIC Net, which is accessible through the Museum's website on the volunteer page, you can receive free museum gear. ISM will be rewarding goals of 100, 500, 1,000 hours and more. Some volunteers might have already been trained to use the new logging system, but if you haven't, Spencer Anderson will be happy to train you.



**NOTE: Steamship Historical Society of America**

meets the third Sunday of each month at ISM from 2-4:30 PM. Visit their website at

<http://www.sshsa-delawarevalley.org/>.



***Now hear this continued ... future opportunities:***



We are pleased to invite you to participate in  
**The Eleventh Annual Maritime Model Exposition at the  
Chesapeake Bay Maritime Museum in St Michaels, Maryland  
On Saturday October 3 and Sunday October 4, 2015**

**Hi everyone-**

It is time to start planning for our Eleventh Maritime Model Exposition on Saturday and Sunday, October 3 and 4, 2015. Please mark your calendars and make plans accordingly. You may remember that the Museum is combining our event with the Mid Atlantic Small Craft Festival held on the Campus at the same time. This is an intriguing event on its own. It consists mostly of hand-made wooden boats of all kinds. Most of the workmanship is superb. The number and variety of vessels is huge. You will enjoy it along with our own activities.

Our pond and other activities will be on Navy Point, the main part of the campus where we were located 2012 and 2013. The main difference is that the static models are planned to be in the Small Boat Shed, a rustic and non-air conditioned building with plenty of space. We will bring in extra lighting for the exhibitors. We will be demo sailing but not racing our R-C skipjacks during the event. We will not be holding our Kids' Boats program with the small pond during the event this year, since it is being held at other events before and after.

That means participants will arrive at the Mill Street entrance and check in or register inside the gate. As usual, the temporary pond, about 40 by 70 feet, is set up especially for the steamboats, but other R-C models will be welcomed, including self-steered pond sailing models, submarines and electrically driven models with modest motors. High-speed boats cannot be accommodated.

**Radio usage will be time-shared on conflicting frequencies.**

The event is held on the grounds of the Chesapeake Bay Maritime Museum and it is open to the public at the regular Museum admission price. All participants must register and receive a badge and a commemorative plaque, but will not be charged admission. Two will be admitted with a participating model. Advanced registration is requested. Bring your own table for setup around the pond or one of ours will be available for \$15 each. If you have a pop-up tent, you are welcome to bring it.

Participants are encouraged to register in advance with the enclosed form. You may reserve a table for your use for the two days by sending a check for \$15 made to The Model Guild of the CBMM, c/o Robert P. Mason, PO Box 47, Bozman, MD 21612 or call Allison Speight at 410-745-4941 or email her at [aspeight@cbmm.org](mailto:aspeight@cbmm.org) and pay by credit card..

Check the Museum web site at [www.CBMM.org](http://www.CBMM.org) . Contact Bob Mason at 410-745-3266 or [bobmason@atlanticbb.net](mailto:bobmason@atlanticbb.net) or Tom Ray at 443-786-1239 or [yogojr@yahoo.com](mailto:yogojr@yahoo.com) for more information.



## Eleventh Maritime Model Expo Registration Form

To be held on October 3 and 4, 2015 at the Chesapeake Bay Maritime Museum  
in St. Michaels, MD

All participants for the Eleventh Maritime Model Exposition must register and receive an admissions badge to enter the Museum grounds. Two adults with one or more participating models will be admitted free of charge for both days. Their dependent children will be admitted with parents. Please register in advance if possible.

For advanced registration as a participant, please provide the following information by September 18:

Name(s) of participant(s) \_\_\_\_\_

\_\_\_\_\_

Number in party- \_\_\_\_\_ (dependent children are also admitted with parents)  
(Include yourself)

Mailing Address      Street \_\_\_\_\_

City \_\_\_\_\_ State \_\_\_\_\_ Zip \_\_\_\_\_

Telephone no \_\_\_\_\_

email address. \_\_\_\_\_

Type and size of model(s) \_\_\_\_\_

Static \_\_\_\_ Active \_\_\_\_\_

Radio channel(s) \_\_\_\_\_ or spread spectrum \_\_\_\_\_

Other frequencies to be used \_\_\_\_\_

We will have eight ft tables available to rent for the two days at \$15. For \$15 you get one table (with no cloth or electric power,) which you may set up near the pond, two chairs for the two days and a commemorative plaque. Static displays will be in the Bay History Building if you wish to be indoors. Free admission with participating model(s) provides access to Fogg's Cove of the Bay from a nearby pier, and a temporary 40 x 70 ft. fresh water pond. Usage will be time shared-for conflicting radio channels. Advanced registration is requested, but on-site on October 3 and 4 will be accepted. If available, tables can also be rented at that time. Please make a check for \$15.00 payable to The Model Guild of the CBMM. Mail to:

Robert Mason, PO Box 47, Bozman, MD, 21612.



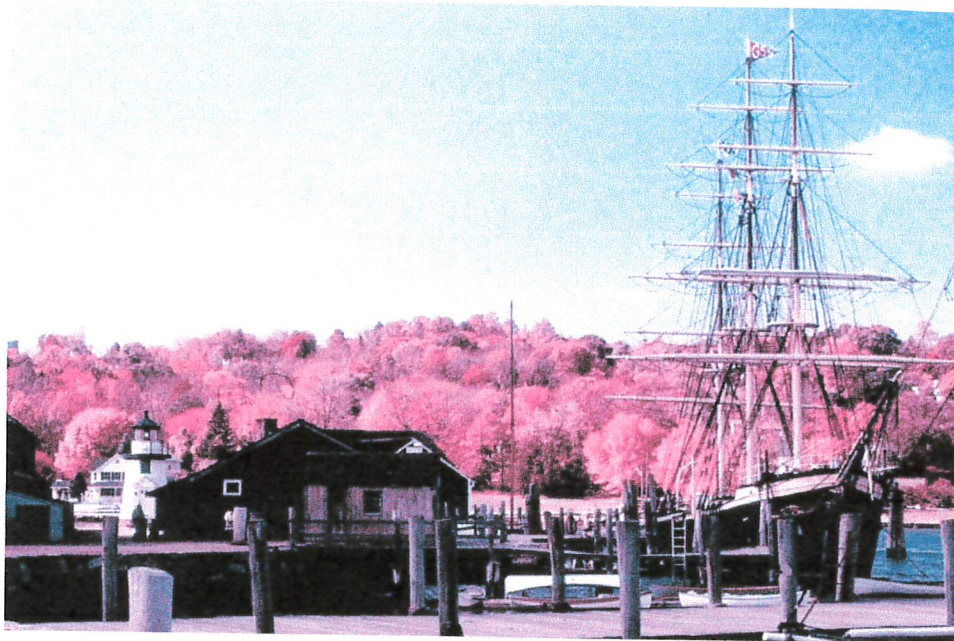


*Now hear this continued ... future opportunities:*

## NAUTICAL RESEARCH GUILD 2015 CONFERENCE

**MYSTIC, CONNECTICUT 22-24 OCTOBER**

The conference will be at the MYSTIC HILTON which is less than one mile from the Seaport.

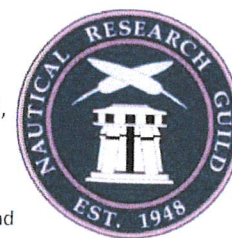


### THE NAUTICAL RESEARCH GUILD

"ADVANCING SHIP MODELING THROUGH RESEARCH"

Annual membership includes our world-renowned quarterly magazine, Nautical Research Journal, which features photographs and articles on ship model building, naval architecture, merchant and naval ship construction, maritime trade, nautical and maritime history, nautical archaeology and maritime art.

Other benefits include discounts on annual conferences, ship modeling seminars, NRG products and juried model competitions which are offered exclusively to Guild members. We hope you will consider joining our ongoing celebration of model ships and maritime history.



**YEARLY  
MEMBERSHIP**  
\$48.00 USA  
\$60.00 Foreign



For more information contact us at: [www.thenrg.org](http://www.thenrg.org) or telephone 585-968-8111





***Now hear this continued ... future opportunities:***



### **THE SSMA JOURNAL:**

**Lots of news and pictures about PSMS in their editions. Become a member of SSMANA; Annual dues are \$25 and sent to John Amann, 758 Regency Park Drive, Crystal Lake, IL 60014. Your check should be made payable to SSMA. Visit them on the web at [SSMANA.ORG](http://SSMANA.ORG).**



**Francine Serratore participated in last month's TASK FORCE 50 REGATTA AT LAKE REEDMAN NEAR YORK, PA!**  
***Thank you, Francine!***