



# QUARTERDECK

THE NEWSLETTER OF THE PHILADELPHIA SHIP MODEL SOCIETY

Launched 7 January 1931

<http://philadelphia ship model society.com>

June 2015

Philadelphia, Pennsylvania

## L'HERMIONE LEADS TALL SHIPS JUNE 25-28



The reconstructed replica of General Lafayette's 18<sup>th</sup>-century ship, the *L'Hermione*, will lead a bevy of graceful beauties into Philadelphia/Camden on June 25<sup>th</sup>. We are expecting more than 300,000 attendees, which would make it the largest sailing event in the nation. Highlights include the *Gazela*--see pages 14-15 of the *QUARTERDECK* for more details. Since the June PSMS meeting we have been advised that members of ISM are eligible for FREE tickets to these events. Please contact **Kim Emmons**, ISM's Group Sales & Membership Manager: [kemmons@phillyseaport.org](mailto:kemmons@phillyseaport.org).

## INSIDE THIS ISSUE

- 4 BUILDING THE MODEL—  
THE USS OLYMPIA
- 6 JUNE MEETING
- 7 JUNE SHOW N' TELL
- 11 NOW HEAR THIS ...
- 20 2015 PSMS EXECUTIVE BOARD

## HISTORIC MONTH AHEAD TALL SHIPS – PHILADELPHIA • CAMDEN

The 817<sup>th</sup> meeting of the Philadelphia Ship Model Society (PSMS) was held at the Independence Seaport Museum (ISM) on the fourth day of June 2015. President **Tom McElhinney** called the meeting to order at 1904 and opened with the Pledge of Allegiance. Thirty-two persons attended and including visitors **Betsy Nutt** and **John Brady**.

(continued page 3)



Pictured above (L-R): **John Brady**, **Ron Spicer** and **Tom McElhinney**.

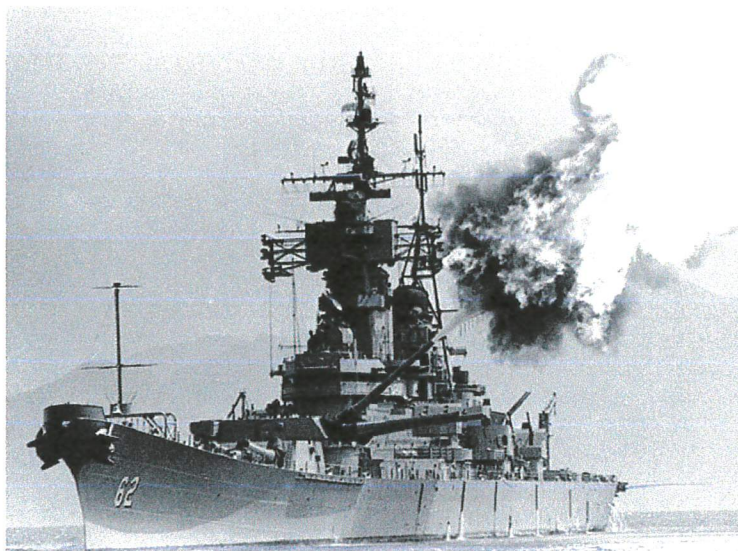
**John Brady**, President and CEO of ISM, accepted the splendid model and case of the USS *Olympia* that **PSMS'** **Ron Spicer** made for use by ISM when seeking funding to save The *Olympia*—the oldest steel-hulled warship afloat in the world. **Ron** spent at least 500 hours making the ship and found many surprises when doing the work (see page 4 of the *QUARTERDECK* for his comments). **John** affirmed the importance of the relationship between ISM and PSMS and asked for support in sending comments to the **RACP Administration**. The deadline for submitting these letters is 27 June 2015. (See page 12 of the *QUARTERDECK* for a suggested letter.)



# NEXT PSMS MEETING

## 2 JULY, 7 PM

## KEN KERSCH



USS *New Jersey* bombarding positions during the Vietnam War.

Our guest speaker is **Ken Kersch** who knows first hand his topic for the July PSMS meeting, “History of the USS *New Jersey* and Her Actions in Vietnam”. Ken served on the USS *New Jersey* from 1967 to 1969 in Vietnam. He was part of the pre-commission crew and served as a machinery repairman second class ES. Ken reports “All our action was off the coast of Vietnam doing shore bombardment in support of men on the ground. We fired on many targets both above and below the DMZ.”

Born in Connecticut, **Ken** moved to New Jersey when he was 11. He prefers to say “I am a native of New Jersey” and currently lives in Monmouth Junction. He and his wife Evelyn have two children (David and Karen) and two grandchildren (Dakota and Gabriel).

**Ken** worked at the RCA Space Center as a model maker from 1969-1987 making parts for satellites and the lunar rover. He was then a police officer for South Brunswick Township from 1987-2011. **Ken** is retired and owner of B&K Service, a custom canvas company.

Welcome, Ken!

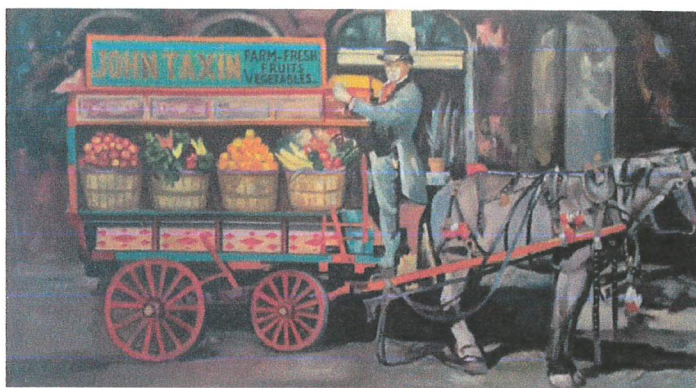


### QUARTERDECK STAFF

Editor: Alice McElhinney ([alice9books@verizon.net](mailto:alice9books@verizon.net))  
 Photographer: Mike Weaver ([eghannah@gmail.com](mailto:eghannah@gmail.com))  
 Distributor of B/W Edition: Ed Leaf ([pjlebl@comcast.net](mailto:pjlebl@comcast.net))  
 Consultants: Ron Spicer ([rsonaldespicier@aol.com](mailto:rsonaldespicier@aol.com))  
 Jerry Kates ([AdvPr1920@aol.com](mailto:AdvPr1920@aol.com))  
 Webmaster: Spencer Andersen ([tallpine@aol.com](mailto:tallpine@aol.com))  
 Letters to Editor: 7900 Ivy Lane, Elkins Park, PA 19027 USA;  
 Phone: +215-635-2988.



# FORTHCOMING EVENTS



## Hucksters

THE TUMULT  
OF DOCK STREET

Exhibit at ISM opens Wednesday, 10 June at ISM;  
runs through Feb. 2016.



- 14 June: PSMS Regatta V at FDR Park--**CANCELLED**
- 25 June: La Grande Fête ISM
- 25-28 June: CELEBRATION OF TALL SHIPS Philadelphia/Camden
- 2 July: 7 PM PSMS Meeting: Program: Ken Kersch from USS *New Jersey*
- 3 July: FIREWORKS SPECTACULAR at ISM
- 25 July: Empire State Model Marine Regatta, Flushing, NY
- 6 August: 7 PM **NO** PSMS Meeting; FUN FLOAT Committee Mtg.
- 9 August: 2 PM PSMS Executive Board Meeting at the Nutt's Farm
- 9 August: 3-6 PM Annual Picnic at the Nutt's Bonnie Ridge Farm
- 16 August: Task Force 50 Regatta, York, PA
- 3 September: 7 PM PSMS Meeting on Board the *Olympia*, led by Spencer Anderson and Jesse Lebovics
- 12 September: COAST DAY at ISM; PSMS will have a FUN FLOAT
- 1 October: 7 PM PSMS Meeting. Program: Captain Peter Orvis
- 3-4 October: Maritime Model Expo, St. Michaels, MD
- 5 November: 7 PM PSMS Meeting. Program WHITE WHALE SALE with John Oddo, Auctioneer
- 11 November: **VETERANS DAY**
- 3 December: 7 PM PSMS Meeting. Program TBA
- 20 December: HOLIDAY BRUNCH BUFFET, Corinthian Yacht Club, 11:30 AM-2:30 PM



## THE PHILADELPHIA SHIP MODEL SOCIETY

Launched 7 January 1931

(See listing of PSMS Officers and Board of Directors on page 20.)

The Philadelphia Ship Model Society (PSMS) meets on the first Thursday of each month at the Independence Seaport Museum (ISM) at 1900 hours. ISM is located at Penn's Landing, 211 South Columbus Boulevard, Philadelphia, Pennsylvania. Guests are always welcome! (For detailed directions to ISM, please see our website at <http://phillyshipmodel.com>). PSMS' annual dues are \$35.00 for an INDIVIDUAL MEMBERSHIP; \$40.00 for a FAMILY MEMBERSHIP (includes member, as well as spouse with children FREE). When attending a meeting discounted parking is available at the garage entrance next to ISM. The hotel is now a Hilton Hotel at Penn's Landing. Please take your parking ticket to the front desk at ISM and have it stamped. This allows parking at the facility for \$12.00. Municipal parking is also available in front of ISM; however, the rates are higher and vary with the season. PSMS also reimburses attendees with \$5.00 toward parking.

The *QUARTERDECK* is the newsletter of the Philadelphia Ship Model Society and is published after each monthly meeting (except in August). Copyright © 2015 Philadelphia Ship Model Society. All rights reserved.



## PSMS JUNE MINUTES

(continued from page 1)

**WELCOME:** The President welcomed all. No sick calls were reported.

**PROGRAM:** Fred Signor presented *Cutting Tools and Finished Parts*—a fascinating look at his exacting work.

**SHOW N' TELL:** Please see pages 7, 8, 9, and 10 of the *QUARTERDECK*.

**BREAK:** Special thanks to Pat Leaf who organized refreshments.

### BUSINESS MEETING:

The Secretary's minutes were approved as printed in the May *QUARTERDECK*.

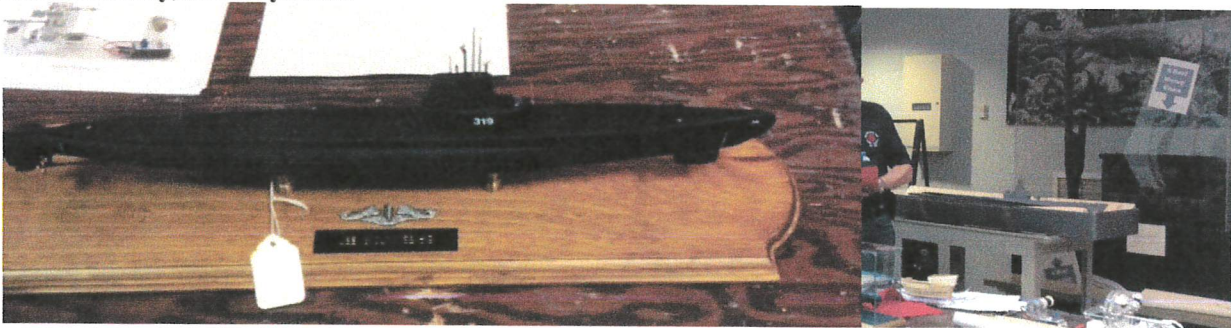
Ed Leaf presented the Treasurer's report that was also approved.

### OLD BUSINESS:

1. **THE SHACK:** Joe Jordan (jjytown@aol.com) requested that we use the sign-in sheet for the *SHACK*.
  2. **34<sup>th</sup> Northeast Ship Model Conference and Show:** Pat Leaf and Jim Nutt will co-chair the 2016 event in New London, CT. John Oddo volunteered to seek vendors. Tom McElhinney and Spencer Anderson will be the co-registrars; Ed Leaf the treasurer (and a co-treasurer is needed); and Todd Wardwell has agreed to be the featured speaker on the new ship being built by the US Coast Guard.
  4. **Swedish Museum:** John Christinzio asked for volunteers (10-15 ships are needed) with a connection to Swedish history. Please contact John ([johnchristinzio@hotmail.com](mailto:johnchristinzio@hotmail.com)) if you will allow your model(s) to be available.
  5. **Regatta V at FDR Park:** John Christinzio advised that the Sunday, 14 June has been **cancelled**. If possible a Fun Float will be scheduled in July.
  7. **Website:** Spencer Andersen reported that he will meet this week; more data uploaded—the website is almost completed!
  8. **Fun Float during ISM's Coast Day (12 September):** Spencer Anderson (Tallpine7@aol.com) will be the committee chairman and volunteers will be needed for this event.
  9. **Tall Ships Philadelphia, Camden, 25-28 June:** Spencer Anderson is coordinating volunteers for this stellar event. He has distributed a "Call for Volunteers" which is on page 15 of the *QUARTERDECK*. You can register directly at <http://tallshipsphiladelphia.com/get-involved/volunteer-application/>. Also, please let Alice know at [alice9books@verizon.net](mailto:alice9books@verizon.net) if you are volunteering. There will be a training session for volunteers. **[Since the meeting we have been advised if you're a member of ISM you are eligible for FREE tickets to these events. Contact Kim Emmons, ISM's Group Sales & Membership Manager: [kemmons@phillyseaport.org](mailto:kemmons@phillyseaport.org).]**
  10. **Jesse Lebovics:** Needs volunteers to make additional models of the *Olympia*. Please contact Jesse directly at [jlebovics@phillyseaport.com](mailto:jlebovics@phillyseaport.com).
  11. **US Naval Academy Museum visit:** Pat Leaf reports this is on hold.
  12. **Delaware Valley Chapter of the Steamship Historical Society:** Joe Gudonis is planning a visit.
  13. **Becuna model conversion** (see pictures below). John Bullock and Spenser Anderson have volunteered to do the work for Craig Bruns, ISM's Chief Curator.
- ### NEW BUSINESS:
14. **John Brady** spoke about ISM's ships and the general status of the museum. A form letter to the RACP Administration has been developed (see page 12 of the *QUARTERDECK* for a copy). We are urged not only to write, but also ask friends to support the grant request. Ron Spicer presented the splendid model of the *USS Olympia* to ISM for their use in seeking funding to restore the *Olympia*. *Thank you, Ron for a job well done!* (Read Ron's comments on making this ship model on page 4 of the *QUARTERDECK*.)
  15. **PSMS Picnic on Sunday, 9 August.** Betsy Nutt said she and Jim were looking forward to seeing us at the Bonnie Ridge Farm (see page 5 of the *QUARTERDECK* for the deadline and other details).
  16. **NEXT PROGRAM on 2 July:** Ken Kersch on the "History of the *USS New Jersey* and Her Actions in Vietnam" (see page 2 of the *QUARTERDECK* for details).
  17. 50/50 DRAWING was won by John Bullock.
  18. **ADJOURNMENT** at 2118 for CLEAN-UP.

Respectfully submitted,

Alice McElhinney, Secretary/Editor







## **BUILDING THE MODEL—THE USS *OLYMPIA*** **Reville/Encore; Scale: 1/232**

In November 2014, the **Independence Seaport Museum (ISM)** issued a request through **Jesse Lebovics**, Director of Historic Ships, for a volunteer to build an Encore plastic kit of the **USS *Olympia***.

**ISM** supplied the standard kit which I received on 20 December 2014. This was an older Revell kit reissued and upgraded with two photo etch sheets. The model was to be built to match the period in 1898, after the battle of Manila Bay, when she was repainted with a white hull and buff upper works; the colors she displays today. The requested finish date was 3 to 4 months which meant March or April 2015. I finished the model on 20 March 2015.

The kit contained all the plastic parts in light gray, instruction book and photo etch sheets. The molding was clean with very little flash. All parts are numbered and easy to follow. I had trouble at first with the photo etch. It is finely etched and delicate. (Be prepared to summon all of your patience and apply a steady hand during assembly.)

There were some surprises: Rivets on the hull that do not belong there and bulges on the searchlight crows nets, to name two. My research revealed some missing details, but these were easily added. To remove the rivets from the hull, I used 100 and 180 grit sandpaper and sanding boards along with scrapers made from old dental picks.

When I found out that the superstructure catwalk had railings on both sides, I knew I would need more photo etch railings. I called the distributor, Squadron Products, and explained my problem. They called me back and said they would be sending me another set of photo etch. The only charge would be the shipping. That kind of customer service is indeed rare.

Based on the model measurements, the case measurements were 22" long x 8" wide x 11" high. This allowed 2" clearance around the model. I purchased 2 feet x 4 feet x ¼ inch sheets of Plexiglas at my local hardware store and had them cut it according to a layout I gave them I used Weld-on Acrylic liquid to cement pieces together.

I started the base with a 12" x 36" mahogany plank cut down to 26", which gave 2" air space on all sides of the model. I also bought 8 feet of 916 cove molding. Now I had a base 2" larger than the case on all four sides.

To prep the base, I used 180 grit sandpaper followed by 600 grit—always sanding in the direction of the grain. I then vacuumed the base and used a tac cloth to remove any remaining sawdust. I used Zar oil based wood stain. Follow the directions on the label on the can. I used a sponge brush to apply the first coat and immediately wiped it with a clean, lint-free cloth and did the same to the 4 pieces of cove molding. For a darker stain, apply and wipe again. I let everything dry overnight. Next, I positioned the cove molding using the previous pencil marks and tacked it in place using small brads, lightly sanded it and then applied Zar water base polyurethane finish.

I hope the model serves its purpose well, which is to help raise funds for the *Olympia's* preservation and will also help people to realize what a treasure we have in the oldest steel-hulled warship in the world that remains afloat.

**Ron Spicer**

*[Editor's Note: Ron, thank you for your service and patience in building this handsome model. We are hopeful that you will inspire other PSMS members to take your lead in assisting ISM in this way. "That's the biggest challenge, raising the funds," said President and CEO John Brady. In addition, if possible, let's reach into our own pockets for this noble cause. Also please take time to send the letter/e-mail to the Redevelopment Assistance Capital Program (RACP). Page 12 of the QUARTERDECK has the wording you may use.]*

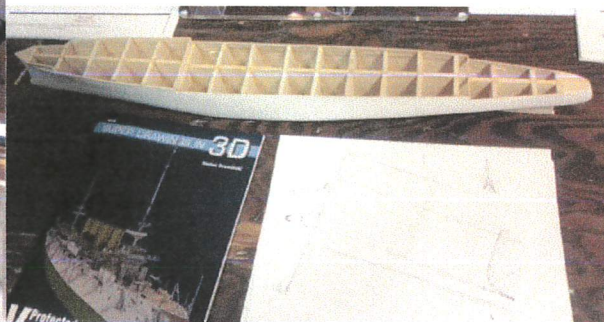
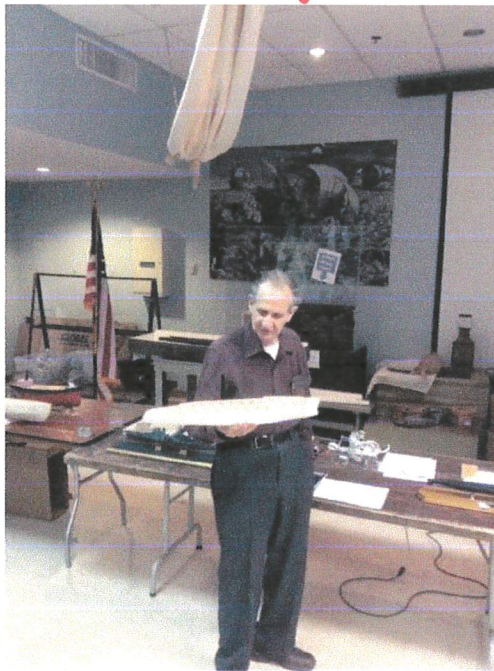


# PSMS *JUNE* MEETING

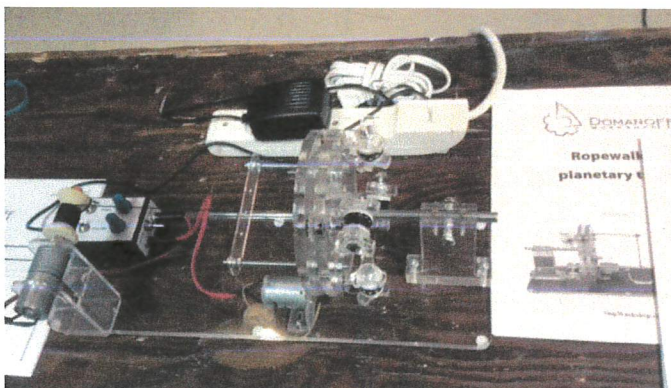




## PSMS *Fun* SHOW N' TELL



1. **Ed Leaf** presented a scratch built model of the Russian ship *Vartag* in  $1/16'' = 1$  ft. The ship is a naval vessel circa 1895 and the model is now 5% complete. **Ed** developed the model plans from a book with 3D drawings.



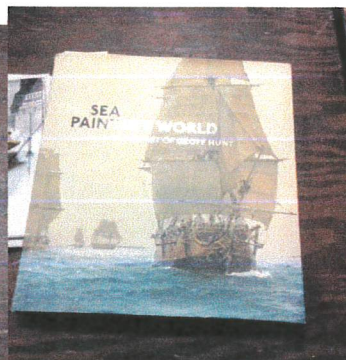
2. A Domanoff Ropewalk was presented and demonstrated by **John Oddo**. He is very pleased with the device. Check out their website: [shipworkshop.com](http://shipworkshop.com) or [Domanoff Workshop.com](http://DomanoffWorkshop.com).



## PSMS *Fun* SHOW N' TELL



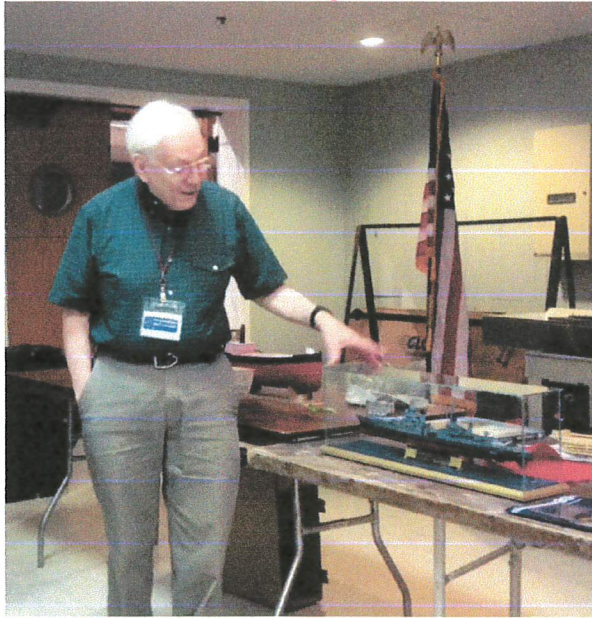
3. **Joe Gudonis** brought "A couple of ideas." The first was a method for making funnels by using sectioned cardboard to make the cones and a stick for the straighter portion. **Joe** then creates a mold and turns out as many identical cones as he needs. **Joe's** second demonstration was his unsuccessful first attempt at placing rivets on a ship. Several members spoke of ways to place rivets.



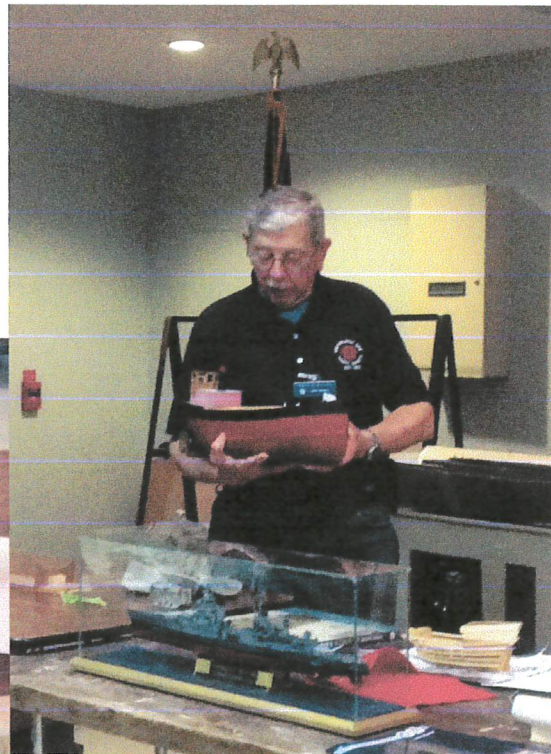
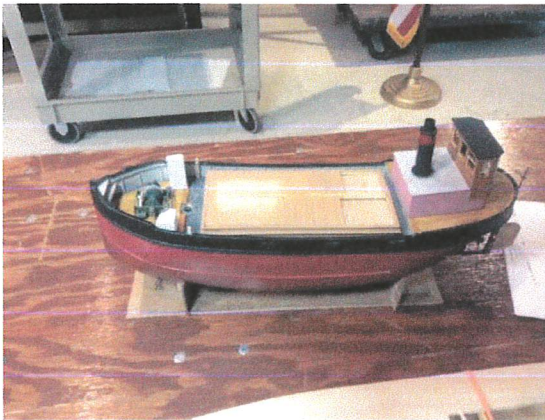
4. A model of the ship *HMS Mary Rose* was presented by **Mike Weaver**. It is scratch built in 1/192 scale (?) with plans taken from a painting by Geoff Hunt. The model is about 1/3 complete. The model is made with wood laminated on a block, the deck done with oakum caulking. **Mike** likes the model because it is small enough to carry around and complete a little at a time.



## PSMS *Fun* SHOW N' TELL



5. A Trumpeter plastic kit in 1/350 scale of the cruiser USS *Indianapolis* (1931-45) was shown by **Mike Zimmerman**. While **Mike** was happy with the kit, especially for its accuracy, on the next try he will use photo etch for the ladders.



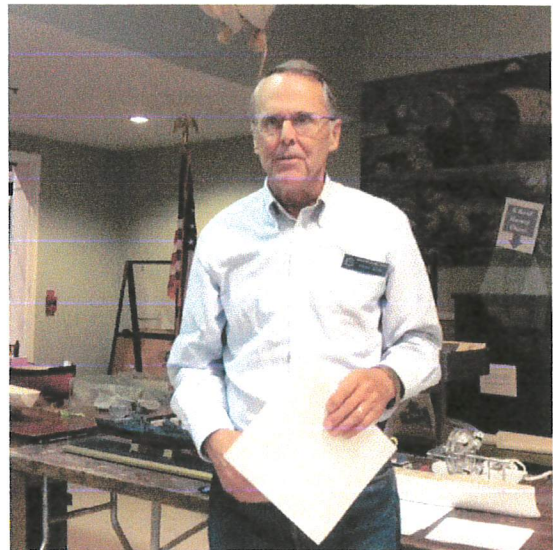
6. **Ron Spicer** brought back his scratch built model of a Clyde puffer. The ship is about 75% completed and will have RC. The Clyde Puffers worked the rivers and canals of Scotland. This model is of a Puffer circa 1920.



## PSMS *Fun* SHOW N' TELL



7. Another sub chaser appeared, this one in the beginning stages. **Jim MacIntyre** did a quick review because he said the members had seen enough (This is the 7<sup>th</sup> of 8 that are being built). These will all be radio controlled and it is hoped that soon we will see them all at a forthcoming Fun Float.



8. **Spence Delin** builds from scratch in a way many have abandoned. As an example he brought in the brass belaying pins he is making for his current model. His method “involves cutting brass tube to the length of the head of the pin and brass rod to the total length of the pin. The tube is placed over the pin and secured with cyano. The small end goes into the lathe chuck and the tube end is filed to shape.”



## Now hear this ...



The Independence Seaport Museum is gaining ground in its restoration of the USS *Olympia*, the oldest steel warship afloat in the world. But it's been a slow process that may rely on Gov. Tom Wolf approving millions in grant funding. Restoration for the 123-year-old ship docked at Penn's Landing comes at a price tag of about \$14 million—including \$1 million just to move the ship and \$6 million for restoration work on the aging hull and deck. "That's the biggest challenge, raising the funds," said President and CEO John Brady. [See Jun 2, 2015 story by Fran Hilario in the *Philadelphia Business Journal*.] The following page provides a sample letter to be used when supporting the grant which has been submitted to the Redevelopment Assistance Capital Program (RACP).

**Become a Member of ISM ...**Independence Seaport Museum members receive free admission to the Museum, Workshop on the Water (shown above), the cruiser *Olympia* and submarine *Becuna*, as well as invitations to exhibit openings, discounts in the gift shop, special member pricing for special programs and events and preferred access to boating opportunities on visiting tall ships.

Membership levels: Individual - \$45 (benefits apply to one person); Family - \$75 (benefits apply to up to five people in the same household); see their website for other levels.

**NOTE:** As a member of PSMS you are considered a **VOLUNTEER** at ISM—in addition to working in the SHACK, you are encouraged to volunteer at other events sponsored by the museum!

*See the different areas where we are needed and –*

# VOLUNTEER!

**NOTE:** All volunteers need to sign in and out from the museum from now on. The sign in book is located by the front desk on the podium. Boat shop volunteers will continue to sign in and out at the boat shop. Ships volunteers will sign in and out on the ships, unless they are coming into the museum and then they would sign in and out there as well. For PSMS, you will also need to sign in and out at the front desk.

Therefore if there is an emergency we will know who all is in the building at that time. If there is an emergency inside the museum, please exit the building and meet at the Walnut Street steps. For those on the ships, you will meet on the landing in front of the ships.

If you have been by the museum lately, you will have noticed the big changes happening on our galleries. We have taken down a large part of the main exhibit to make way for our new schooner, *Diligence II*. It is exciting too for the Seaport Museum and we hope you can come down and lend a hand. (See pictures on the next page.)



## Sample Letter/E-mail – Historic *Olympia* Restoration at Independence Seaport Museum

Office of the Budget Commonwealth of Pennsylvania  
18<sup>th</sup> Floor Harristown 2  
333 Market Street  
Harrisburg, PA 17101-2210

or

E-mail: [RA-OB-PubicComment@pa.gov](mailto:RA-OB-PubicComment@pa.gov)

Dear RACP Administration,

My comments pertain to the Historic *Olympia* Restoration at Independence Seaport Museum (ISM), which is located in the City of Philadelphia on the Delaware River waterfront.

It has come to my attention that the ISM has made a submission requesting \$4.5 M in RACP funding. As a local citizen, I strongly encourage your full support for this project to enhance economic development and educational opportunities for our community.

It is my understanding that the *Olympia* must be restored and relocated in order to permit the implementation of the City-led vision for Penn's Landing and the Delaware River waterfront. As part of the Independence Seaport Museum's overall redevelopment project for Penn's Landing, the existing museum will be demolished and rebuilt. The new building will better serve the mission of ISM and complement the Delaware River Waterfront Corporation's (DRWC) Master Plan for the Central Delaware River.

Together, restoration and relocation of the *Olympia* and construction of the new museum and associated retail, commercial and residential development will provide for 379 construction jobs, 25 new jobs and account for \$26,439,156 in new direct, indirect and induced earnings on an annual basis. Additionally, the museum will generate direct consumer spending of \$13,070,000 annually in the Commonwealth.

Since 1961, Independence Seaport Museum, the region's only maritime history museum, has served as a leader in Philadelphia's cultural community, offering compelling exhibitions and stimulating educational programming. Today, ISM is reevaluating their role to better deliver on their mission of connecting area residents, especially children, to the water. Utilizing and incorporating this unique riverside location into the new museum will allow ISM to offer more interactive educational experiences. Relocating the *Olympia* to a new berth just outside the new museum entrance will fully realize the ISM's potential to serve as a central cultural touchstone for the entire waterfront community.

The ISM's planned development projects will serve as an economic benefit to all citizens of the Commonwealth.

Thank you for the opportunity to comment.

INSERT NAME

INSERT TITLE

INSERT PHONE/CONTACT NUMBER

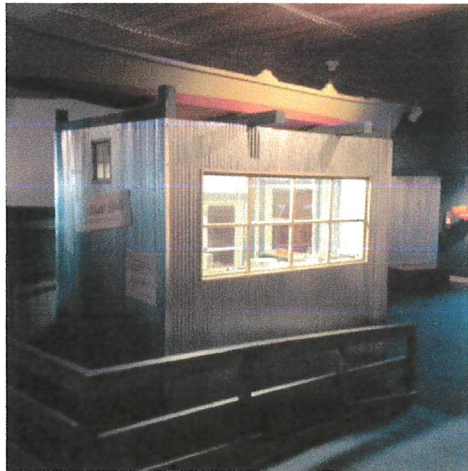


*Now hear this continued ...*

## ***DILIGENCE II*** UNDER CONSTRUCTION AT ISM



The skeleton of the ship is in place! (Picture to the Right). The transom end of the Schooner Diligence II, 65' long at the deck. The deck will be about 2' off the floor, and the hull fully planked with 1 1/2" poplar. The planks are 5" wide, and the public can watch the construction this week. The 2 masts will pierce the ceiling. *Joe Jordan*



## **THE SHACK**

Keep the lights on! Volunteer! Contact Joe Jordan ([jjvtown@aol.com](mailto:jjvtown@aol.com)).

### **GET YOUR REWARD!**

Volunteers have the opportunity to receive rewards for the hours they give to the museum. By logging your volunteer hours in VIC Net, which is accessible through the Museum's website on the volunteer page, you can receive free museum gear. ISM will be rewarding goals of 100, 500, 1,000 hours and more. Some volunteers might have already been trained to use the new logging system, but if you haven't, Spencer Anderson will be happy to train you.



**NOTE: Steamship Historical Society of America** meets the third Sunday of each month at ISM from 2-4:30 PM. Visit their website at <http://www.sshsa-delawarevalley.org/>.





*Now hear this continued ...*

## **TALL SHIPS Philadelphia • Camden**



**L'Hermine**



**Barque Eagle**



**Oliver Hazard Perry**



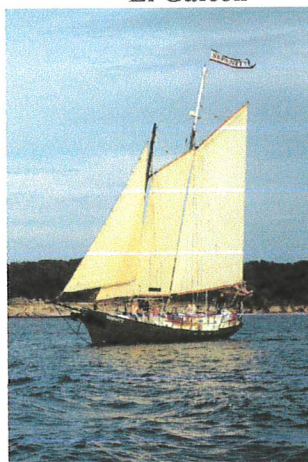
**El Galeon**



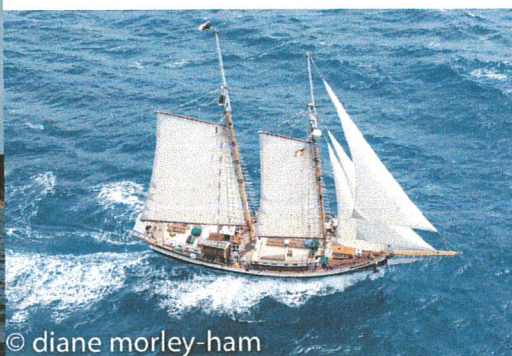
**Gazela**



**Picton Castle**



**Serenity**



**Tree of Life**



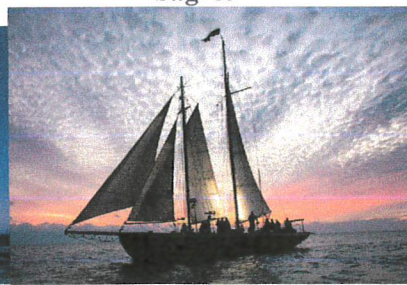
**Sagres**



**Privateer Lynx**



**AJ Meerwald**



**Hindu**



*Now hear this continued ...*



**TALL SHIPS**  
PHILADELPHIA • CAMDEN  
**WHERE AMERICA SET SAIL**

**Did you know if you're a member of ISM, you're eligible for FREE tickets to the TALL SHIPS?**

**Contact Kim Emmons,  
ISM's Group Sales & Membership Manager:  
[kemmons@phillyseaport.org](mailto:kemmons@phillyseaport.org)**

**or**

Click [here](#) to purchase or call 877-4FLY-TIX. Tickets are good for attractions in both Camden and Philadelphia.

## **CALL FOR VOLUNTEERS !!!**

For those who are interested in volunteering, the web site to apply for volunteer roles, request your areas of interest, and to state your shirt size is as follows:

<http://tallshipsphiladelphia.com/get-involved/volunteer-application/>

The tall ships last visited Philadelphia 15 years ago. It may be another 15 years until they visit again. Apply soon so you don't miss the opportunity to play a role you enjoy, and that gives you an insiders perspective on these beautiful sailing ships. Please let Alice ([alice9books@verizon.net](mailto:alice9books@verizon.net)) know when you apply so we can feature PSMS's participation in the newsletter and on the web site. *A Training Session will be announced!*

*Spencer Anderson, PSMS Webmaster*

### **... and more about the event:**

Adding excitement to a waterfront that is already bubbling with activity, Tall Ships® Philadelphia-Camden is slated to bring majestic vessels up the Delaware River in early summer on June 25-28. Tall Ships® Philadelphia-Camden has the distinction of being the largest sailing event in the United States in 2015.

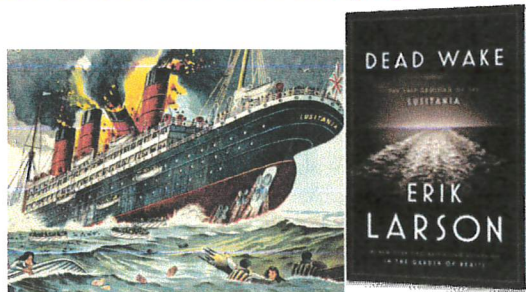
With over a dozen magnificent domestic and international ships planning to attend Tall Ships® Philadelphia – Camden, visitors can catch a glimpse, step aboard and even set sail on some of the most meticulously crafted ships of yore. The unique two-sided waterfront affords increased accessibility for visitors from both sides of the river and creates the perfect venue for a myriad of festival attractions and of course, Tall Ships.

The event is sponsored by a collaboration of four Delaware waterfront organizations: the Delaware River Waterfront Corporation, Coopers Ferry Partnership, Adventure Aquarium and Independence Seaport Museum.

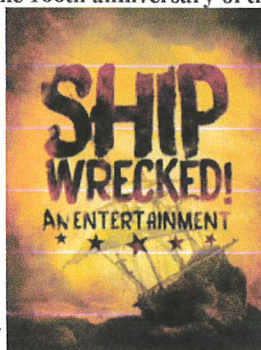
An abundance of attractions will accompany the Tall Ships such as historical reenactments, live music, dance, youth sail training, a craft beer garden and the regions finest fare.



***Now hear this continued ... recommended reading:***



From the #1 *New York Times* bestselling author and master of narrative nonfiction comes the enthralling story of the sinking of the *Lusitania*, published to coincide with the 100th anniversary of the disaster.



***Recommended seeing:***

**Shipwrecked!**

An Entertainment

The Amazing Adventures of Louis de Rougemont (as Told by Himself)

...at the INDEPENDENCE STUDIO at the Walnut Street Theatre from 6 October-1 November 2015. Tickets go on sale to the general public starting 16 August; call 215-574-3550, ext. 6 for tickets. An old man hobbles onstage and declares, "I'm about to tell you a story. A fantastic and amazing story! A story all the more remarkable because every word of it is true." So says Louis de Rougemont. His brave and amazing adventures left nineteenth-century England spellbound. Dare to be whisked away by his heroic tale of the high seas, filled with exotic islanders, flying wombats, giant sea turtles and a monstrous man-eating octopus! Inspired by a true story, Pulitzer Prize-winner Donald Marguiles' *Shipwrecked* examines how we're willing to blur the line between fact and fiction in order to leave our mark on the world.



***Now hear this continued ... future opportunities:***



**The Antique & Classic Boat Show, 19-21 June.**

**Please see their website for details: [www.chespeakcbayacbs.org](http://www.chespeakcbayacbs.org)**

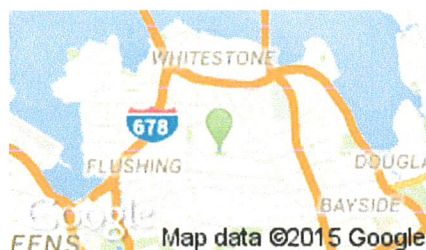
Chesapeake Bay Maritime Museum

St. Michaels, Maryland

**Friday 11-5 • Saturday 10-5 • Sunday 10-2**



*Now hear this continued ... future opportunities:*



**EMPIRE STATE MODEL MARINE REGATTA,  
25 JULY @ Bowne Park, 155-07 29<sup>th</sup> Avenue,  
Flushing, NY from 8 AM-6 PM**



**MODEL GUILD OF THE CHESAPEAKE BAY MARITIME MUSEUM, the NORTH  
AMERICAN STEAMBOAT MODERLER'S ASSOCIATION, and the  
WASHINGTON SHIP MODEL SOCIETY**

**3 & 4 October 2015**

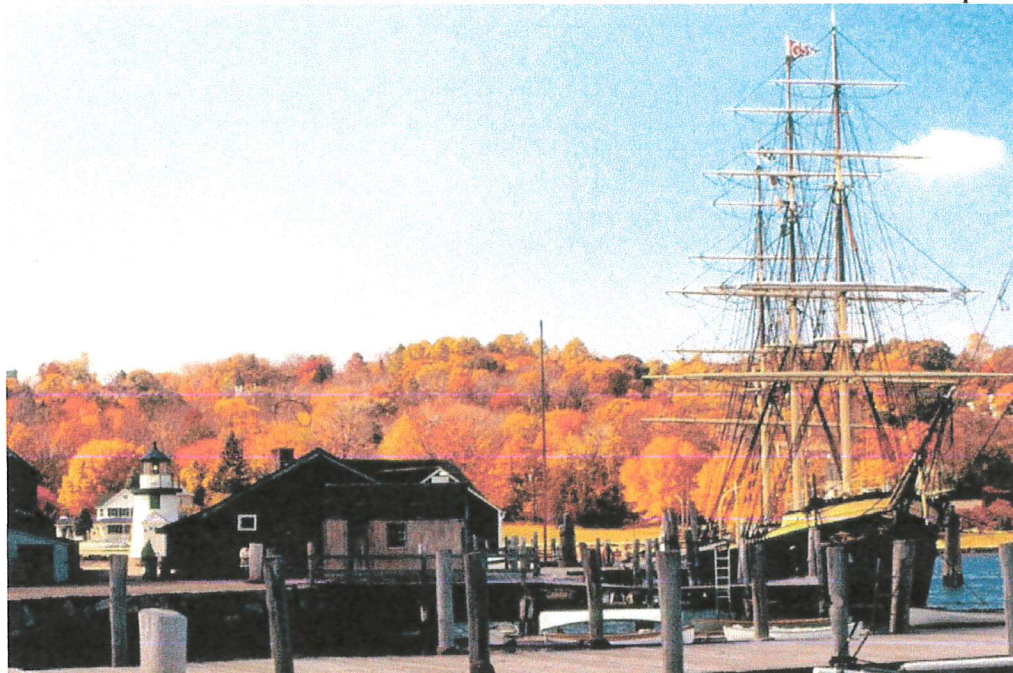




*Now hear this continued ... future opportunities:*  
**NAUTICAL RESEARCH GUILD 2015  
CONFERENCE**

**MYSTIC, CONNECTICUT 22-24 OCTOBER**

The conference will be at the MYSTIC HILTON which is less than one mile from the Seaport.



**THE NAUTICAL RESEARCH GUILD**

**"ADVANCING SHIP MODELING THROUGH RESEARCH"**

Annual membership includes our world-renowned quarterly magazine, Nautical Research Journal, which features photographs and articles on ship model building, naval architecture, merchant and naval ship construction, maritime trade, nautical and maritime history, nautical archaeology and maritime art.

Other benefits include discounts on annual conferences, ship modeling seminars, NRG products and juried model competitions which are offered exclusively to Guild members. We hope you will consider joining our ongoing celebration of model ships and maritime history.



**YEARLY  
MEMBERSHIP**  
\$48.00 USA  
\$60.00 Foreign



For more information contact us at [www.thenrg.org](http://www.thenrg.org)



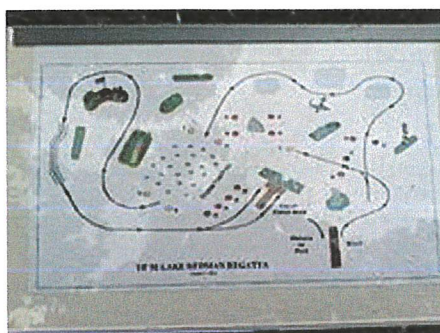


*Now hear this continued ... future opportunities:*



## THE SSMA

**JOURNAL:** Lots of news and pictures about PSMS in their editions. Become a member of SSMA; Annual dues are \$25 and sent to John Amann, 758 Regency Park Drive, Crystal Lake, IL 60014. Your check should be made payable to SSMA. Visit them on the web at SSMA.ORG.



... AND ON 16 AUGUST, TASK FORCE  
50 REGATTA AT LAKE REEDMAN NEAR YORK, PA!



**NEW PSMS WEBSITE!!**



YOUR PATIENCE HAS BEEN APPRECIATED—NEW WEBSITE—

WHERE THE WORK IS UNDER CONSTRUCTION!

<http://philadelphiahipmodelsociety.com>





# PSMS SHIRTS & CAPS WITH SOCIETY LOGO



We can order shirts and caps with the embroidered Society logo and for the first time women's sizes are available.

Prices are:

Long-sleeved polo shirts, navy blue, men's sizes \$35.00  
available in small through 4XL

Add \$2.00 for 2XL, \$3.00 for 3 XL, and \$4.00 for 4 XL

Women's sizes small through 2X

\$35.00

Short-sleeved polo shirts, navy blue,

men's sizes small through 6 XL and tall in XL through 3X \$28.75

Women's sizes available sizes small through 3XL \$28.75

Hats 6 panel wave cap, navy with white trim

\$14.50

*There is interest in woven fabric shirts and I will have catalogues showing them as well as the knit shirts. The prices in the catalogues are not the final cost with the logo but are expected to be \$30.00 or less, including the embroidered logo.*

*If you would like to place an order please let Pat Leaf know at [pjlebl@comcast.net](mailto:pjlebl@comcast.net). Please be sure of your size.*



## 2015 PSMS OFFICERS & EXECUTIVE BOARD

President: Tom McElhinney ([shipshape51@verizon.net](mailto:shipshape51@verizon.net)); Vice-President: Fred Signor: ([fsignor@comcast.net](mailto:fsignor@comcast.net));

Secretary/Editor: Alice McElhinney ([alice9books@verizon.net](mailto:alice9books@verizon.net)); Treasurer: Ed Leaf ([pjlebl@comcast.net](mailto:pjlebl@comcast.net)).

Members-at-Large:

John Christinzio ([johnchristinzio@hotmail.com](mailto:johnchristinzio@hotmail.com)); Spence Delin ([sdelin@verizon.net](mailto:sdelin@verizon.net)); John Esposito ([jimatango622@verizon.net](mailto:jimatango622@verizon.net));

Joe Gudonis; Joe Jordan ([jivtown@aol.com](mailto:jivtown@aol.com)); Pat Leaf ([pjlebl@comcast.net](mailto:pjlebl@comcast.net)); Jim MacIntyre ([JMacin5573@aol.com](mailto:JMacin5573@aol.com));

Josef Messmer ([jrm8391@comcast.net](mailto:jrm8391@comcast.net)); John Oddo ([johnmariao.1959@gmail.com](mailto:johnmariao.1959@gmail.com))

Rick Rathgeber ([rrathgeber@usa.net](mailto:rrathgeber@usa.net)); Francine Serratore ([fserratore@verizon.net](mailto:fserratore@verizon.net)); Mike Weaver ([eghannah@gmail.com](mailto:eghannah@gmail.com));

Mike Zimmerman ([barbarazimm@verizon.net](mailto:barbarazimm@verizon.net))

Webmaster: Spencer Anderson



The world's largest rubber duck will take pride of place in the middle of the water, stationed on a floating pontoon and ready for its close-up during TALL SHIPS – PHILADELPHIA CAMDEN.

