

QUARTERDECK

THE NEWSLETTER OF THE PHILADELPHIA SHIP MODEL SOCIETY

Launched 7 January 1931

<http://philadelphia ship model society.com>

May 2015

Philadelphia, Pennsylvania

SPENCE DELIN WINS AGAIN AT NORTHEAST



At the recent Northeast Ship Model Conference **Spence Delin** won the Peoples' Choice for Sailing Vessels, and the Jim Robert's Memorial, which is awarded by a panel of one judge from each participating club. Congratulations, **Spence!** See pages 5, 6 and 7 for a report and pictures.



PSMS MOURNS DEATH OF BILL CROTHERS SEE "IN MEMORIUM" ON PAGE 8

The 816th meeting of the **Philadelphia Ship Model Society (PSMS)** was held at the **Independence Seaport Museum (ISM)** on the seventh day of May 2015. President **Tom McElhinney** called the meeting to order at 1906 and opened with the Pledge of Allegiance. Thirty-three persons attended and we welcomed our two new members **Frank Mostaccio** (who joined in absentia last month) and **Ted Dyer** as well as one visitor, **Marty Watkins!**

(continued page 3)



INSIDE THIS ISSUE

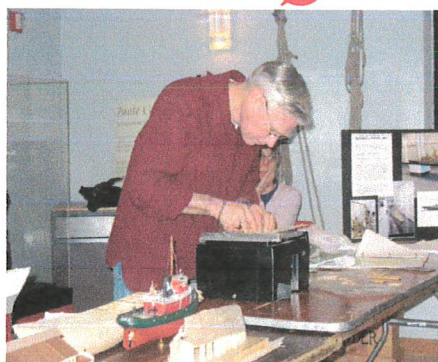
- 4 MEMBER OF THE MONTH
- 8 IN MEMORIUM TO CROTHERS
- 10 MAY MEETING
- 12 MAY SHOW N' TELL

FDR Park in Philadelphia is the site of **PSMS' Regatta V** to be held on **Sunday, 14 June**. Bordered by the South Philadelphia Sports Complex on South Broad Street, Interstate highway-95/Philadelphia Naval Yard and Pattison Avenue/Packer Park residential neighborhood. Many Philadelphians enjoy it as a green "Oasis" for a variety of recreational activities. This event is being chaired by **John Christinzio** (johnchristinzio@hotmail.com). Please volunteer by contacting **John!**

NEXT PSMS MEETING

4 JUNE, 7 PM

Fred Signor



As you know, members of this club build models, primarily ship models, which are miniature representatives of the real thing. In my work I sometimes use miniature tooling to accomplish some of the things I have to do to make mold components and other parts used in the mold trade--such as end mills that are .005 in diameter, drills .004 in diameter, copper tubing that is .012 in diameter with a .004 inside diameter hole. Also brass wire .006-.010 in diameter to cut shapes in steel up to 10" thick like you would use a band saw to cut wood. For my presentation I will show examples of the cutting tools and examples of the finished parts cut by some of these tools.

Fred Signor



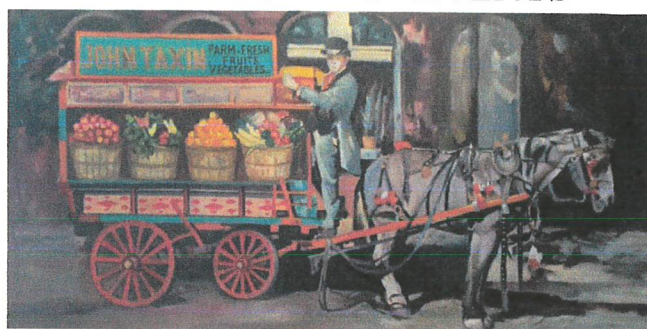
The *Mayflower II* in drydock at Mystic Seaport. (Photo by Jim Nutt)



QUARTERDECK STAFF

Editor: Alice McElhinney (alice9books@verizon.net)
 Photographer: Mike Weaver (eghannah@gmail.com)
 Distributor of B/W Edition: Ed Leaf (pjlebl@comcast.net)
 Consultants: Ron Spicer (rsonaldspicer@aol.com)
 Jerry Kates (AdvPr1920@aol.com)
 Webmaster: Spencer Andersen (tallpine@aol.com)
 Letters to Editor: 7900 Ivy Lane, Elkins Park, PA 19027 USA;
 Phone: +215-635-2988.

FORTHCOMING EVENTS



Hucksters

THE TUMULT
OF DOCK STREET

Exhibit at ISM opens Wednesday, 10 June at ISM;
runs through Feb. 2016.



- 16 May: Armed Forces Day: ISM, 2 PM; Michael Gillen lecture.
- 17 May: Marine Day in Baltimore features the *NS Savannah*
- 25 May: Memorial Day: *Honor those who died that we may be free!*
- 4 June: Meeting: Program by Fred Signor
- 10 June: *Hucksters: The Tumult of Dock Street*, reception 6-8 PM
- 14 June: PSMS Regatta V at FDR Park
- 25 June: La Grande Fête ISM
- 25-28 June: CELEBRATION OF TALL SHIPS Philadelphia/Camden
- 2 July: 7 PM PSMS Meeting: Program: Ken Kersch from USS
New Jersey
- 3 July: FIREWORKS SPECTACULAR at ISM
- 25 July: Empire State Model Marine Regatta, Flushing, NY
- 6 August: 7 PM **NO** PSMS Meeting; FUN FLOAT Committee Mtg.
- 9 August: 2 PM PSMS Executive Board Meeting at the Nutt's Farm
- 9 August: 3-6 PM Annual Picnic at the Nutt's Bonnie Ridge Farm
- 16 August: Task Force 50 Regatta, York, PA
- 3 September: 7 PM PSMS Meeting on Board the *Olympia*, led by
Spencer Anderson and Jesse Lebovics
- 12 September: COAST DAY at ISM; PSMS will have a FUN FLOAT
- 1 October: 7 PM PSMS Meeting. Program: Captain Peter Orvis
- 3-4 October: Maritime Model Expo, St. Michaels, MD
- 5 November: 7 PM PSMS Meeting. Program WHITE WHALE SALE
with John Oddo, Auctioneer
- 11 November: **VETERANS DAY**
- 3 December: 7 PM PSMS Meeting. Program TBA
- 20 December: HOLIDAY BRUNCH BUFFET, Corinthian Yacht
Club, 11:30 AM-2:30 PM



THE PHILADELPHIA SHIP MODEL SOCIETY

Launched 7 January 1931

(See listing of PSMS Officers and Board of Directors on page 23.)

The Philadelphia Ship Model Society (PSMS) meets on the first Thursday of each month at the Independence Seaport Museum (ISM) at 1900 hours. ISM is located at Penn's Landing, 211 South Columbus Boulevard, Philadelphia, Pennsylvania. Guests are always welcome! (For detailed directions to ISM, please see our website at <http://phillyshipmodel.com>). PSMS' annual dues are \$35.00 for an INDIVIDUAL MEMBERSHIP; \$40.00 for a FAMILY MEMBERSHIP (includes member, as well as spouse with children FREE). When attending a meeting discounted parking is available at the garage entrance next to ISM. The hotel is now a Hilton Hotel at Penn's Landing). Please take your parking ticket to the front desk at ISM and have it stamped. This allows parking at the facility for \$12.00. Municipal parking is also available in front of ISM; however, the rates are higher and vary with the season. PSMS also reimburses attendees with \$5.00 toward parking.

The *QUARTERDECK* is the newsletter of the Philadelphia Ship Model Society and is published after each monthly meeting. Copyright © 2015 Philadelphia Ship Model Society. All rights reserved.

BILL CROTHERS: We were all saddened to learn of his death on 1 May 2015. Several members shared their fond memories of Bill. Please see "IN MEMORIUM" on page 8.

WELCOME: Fred Signor was welcomed back after his accident.

PROGRAM: Mike Zimmerman gave an interesting power point presentation on Craig L. Symonds' book, *DECISION AT SEA*. In deference to time, Mike only discussed the battles involving the *Olympia* and Midway.

SHOW N' TELL: Please see pages 10, 11, 12 and 13 of the *QUARTERDECK*.

BREAK: Special thanks to Pat Leaf who organized refreshments which included a May basket of flowers.

BUSINESS MEETING:

The Secretary's minutes were approved as printed in the April *QUARTERDECK*. Ed Leaf presented the Treasurer's report that was approved.

OLD BUSINESS:

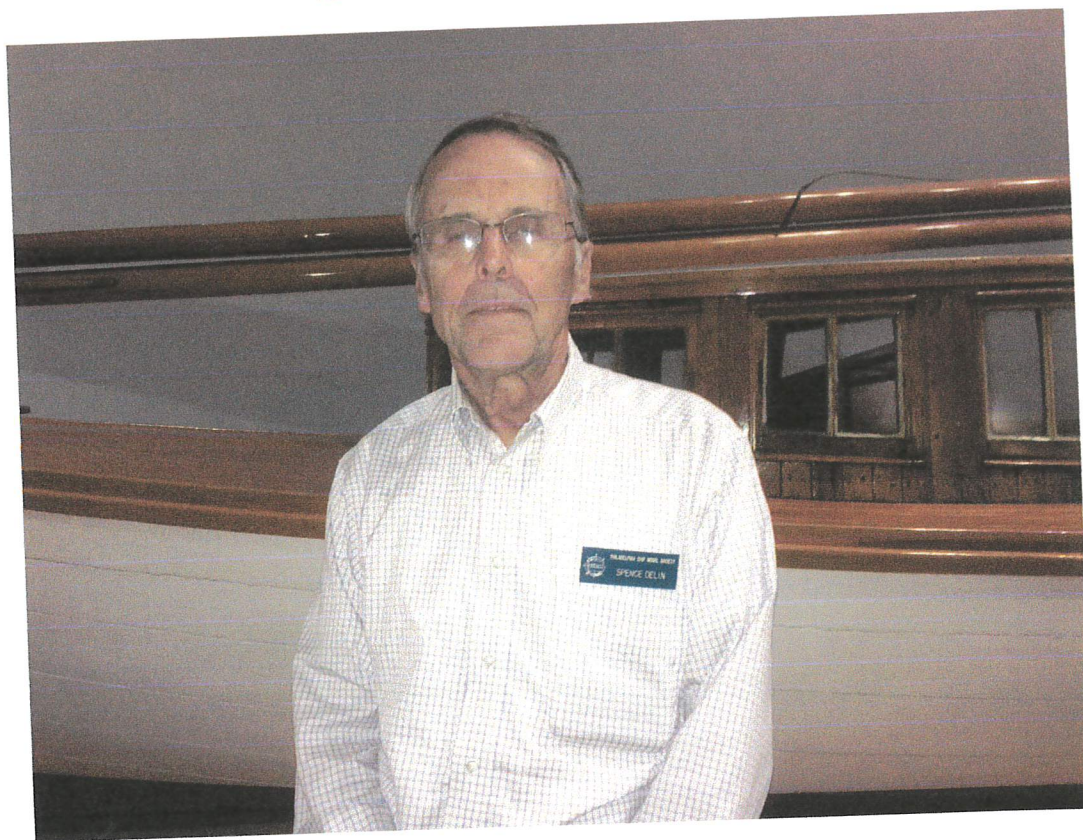
1. **THE SHACK:** Joe Jordan requested that we use the sign-in sheet for the *SHACK*.
2. **33rd Northeast Ship Model Conference and Show:** Kudos were extended to Spence Delin for winning the People's Choice for Sailing Vessels and the Jim Robert's Memorial Award. Pat Leaf's report and pictures from the event are on pages 5, 6 and 7 of the *QUARTERDECK*. Thank you Pat for your work on this event.
3. **34th Northeast Ship Model Conference and Show:** Pat Leaf and Jim Nutt will co-chair the 2016 event in New London, CT. Tom McElhinney and Spencer Anderson will be the co-registrars; Ed Leaf the treasurer; and Todd Wardwell the featured speaker on the new ship being built by the US Coast Guard. By the end of the year we'll have other assignments.
4. **Swedish Museum:** John Christinzio reported the Museum is working out the insurance concerns. They definitely want our participation and would like the exhibit to be similar to the one prepared for the Philadelphia International Airport (10-15 spaces), however the ships should have a connection to Swedish history (e.g., the *Vasa*, *Johann*, *Stockholm*, *Drottning Victora*, *Gustav V*, etc.)
5. **Regatta Plans with South Orange, NJ group:** John Christinzio—this is in abeyance.
6. **Regatta V at FDR Park:** John Christinzio indicated that **Sunday, 14 June is the date!** Volunteers will be needed!
7. **Website:** Spencer Andersen needs volunteers to enter content on the website!
8. **Fun Float during ISM's Coast Day (12 September):** Spencer Anderson will be the committee chairman and volunteers will be needed for this event.
9. **Tall Ships Philadelphia/Camden, 25-28 June:** Spencer Anderson is coordinating volunteers for this stellar event. He has distributed a "Call for Volunteers" which is on pages 16 and 17 of the *QUARTERDECK*. You can register directly at <http://tallshipsphiladelphia.com/get-involved/volunteer-application/>. Also, please let Alice know at alice9books@verizon.net if you are volunteering.
10. **Jesse Lebovics:** Needs volunteers to make other models of the *Olympia*. Please contact Jesse directly at jlebovics@phillyseaport.com.
11. **US Naval Academy Museum visit:** Pat Leaf will be contacting Don Preul for a date during the summer.
12. **Delaware Valley Chapter of the Steamship Historical Society:** Francine Serratore reported the group is very interesting and welcomes PSMS members to attend their meetings (they meet in the Educational Room at ISM on the third Sunday of each month from 2-4:30). Joe Gudonis expressed interest in doing a program for the Steamship group on 18 October. He does plan to attend a meeting, so he will get an idea of what he should prepare.

NEW BUSINESS:

13. **Who Answers Queries** from old website? This must be nailed down for future reference.
14. **New Member, Ted Dyer** brought samples of his work that includes various military interests. Pictured are an early tank and resin castings of the *Olympia* in different scales. He also had planes and soldiers. Welcome, Ted!
15. **NEXT PROGRAM on 4 June:** Jesse Lebovics has requested this meeting on the *Olympia* be postponed until September. June's program will be led by Fred Signor (see page 2 of the *QUARTERDECK* for details).
16. **50/50 DRAWING** was won by Pat Leaf!
17. **ADJOURNMENT** at 2127 for **CLEAN-UP**.

Respectfully submitted,
Alice McElhinney, Secretary/Editor

MEMBER OF THE MONTH SPENCE DELIN



I grew up in Wilmington, Delaware. I graduated from Lafayette College with a BA in Economics, intending to pursue a career with DuPont in Richmond, VA. Within 6 weeks of graduation, during the Vietnam era, I was drafted and quickly joined the Air Force, eventually becoming a base supply officer. After 5 years in the Air Force, I briefly pursued a banking career, leaving that after 4 years to start a colonial furniture manufacturing business. We moved from Doylestown, PA to Bedminster, PA to have the business on the property.

Sue and I met in college on a blind date. She is a graduate of Rider College. We have 3 children. Our eldest, Kim, and her family, live in Hampton, NJ. Kim and Rob have 2 sons, Dylan (14) and Austin (11). Brian and family live near Downingtown, PA. Brian and Kristen have 2 daughters, Caroline (10) and Anna (8). Laura has one daughter, Audra (6) and they live in Bedminster. We are fortunate to have them all fairly close by!

As I've previously written, my father was a great ship model builder! His model of the Raleigh is displayed in the Peabody Museum in Salem, Mass. I started building models as a young boy, and it continued on, wherever I was.

I took my model of a 30 foot officer's barge (finished in 2001), to the recent Northeast Ship Model Conference and was fortunate to have won the Peoples' Choice Award for Sailing Vessels, and the Jim Robert's Memorial, which is awarded by a panel of one judge from each participating club.

Spence Delin

[Editor's Note: Spence, we have long been in awe of your work! We feel it is very fitting that persons attending the Northeast Ship Model Conference selected your work for the Peoples' Choice Award for Sailing Vessels and then to be honored a second year with the Jim Robert's Memorial was very fitting! Congratulations! We remain hopeful that your family's exquisite tradition will pass to a third generation of ship modeling! Kudos to Rick Rathgeber for taking this picture!]

2015 33rd Northeast Regional Conference and Model Show

25 April, Port and Starboard Conference Center
New London, CT

Hosted by the USS Constitution Model Shipwright Guild



The evening before, supper at *Go Fish* in Mystic, CT. Fifteen persons represented PSMS: Seated L-R: Sue Delin, Elly Bulova, Bobbie Zimmerman and Alice McElhinney. Standing 1st Row: L-R: Tom McElhinney, Spence Delin, Steve Bulova, Rick Rathgeber, Mike Zimmerman, Jim Nutt, Jean Jordan, Joe Jordan, and Pat Leaf. Standing 2nd Row: Todd Wardwell and Ed Leaf.

**100 MODELS, 2 SPECIAL AWARDS, PEOPLE'S CHOICE, BY GENERAL VOTE, AND
THE JIM ROBERTS AWARD*, ONE WINNER**

**NEED WE TELL YOU WHOSE MODEL WAS SO HONORED? SPENCE DELIN'S OF
THE UNNAMED STANDARD US NAVAL BARGE OF 1900, OF COURSE. SPENCE,
WE ARE SO PLEASED AND PROUD OF THIS RECOGNITION OF YOUR SUPERB
WORK.**

Fifteen met for dinner at Go Fish in Mystic and we were able to have a private room. The food and the service were excellent. The venue for the Conference on Saturday is ideal, a large room with a wall of windows looking out at the Sound. Didn't see any submarines going or coming this time. The weather was sunny but windy and cold so there weren't many walk-ins, who visit when it's rainy.

The meeting was as usual an enjoyable event, seeing members from other clubs whom we see only once a year and surveying the workmanship of those who share our interest and passion for the art of ship modeling. (It is an art, not a craft; the Metropolitan Museum of Art says so.) It is also a time to get to know our own members outside the necessarily limited opportunity of the meetings, and the ladies who usually do not attend.



2015 33rd NORTHEAST REGIONAL CONFERENCE AND MODEL SHOW continued:

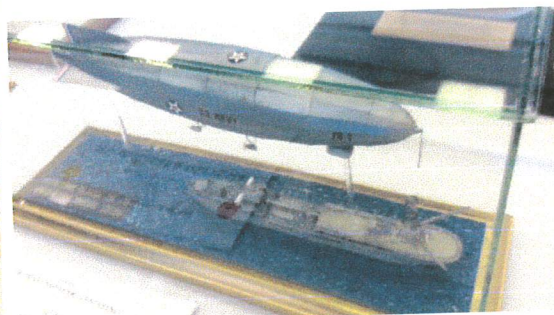
The talk by Rob Napier about the yacht Marilee, 59', built by the Herreshoff Manufacturing Company, 12 built in 1916 and 2 in 1926, and the Dorade, 52', built by Olin J. Stephens at the Minneford Yacht Yard in 1930, was fascination and seriously awe-inspiring. His attention to detail and the lengths to which he goes to achieve it are beyond impressive. Rob spoke after lunch and his presentation was so enthusiastic that it kept us awake during what could have been our afternoon siesta.

Announces of winners of competitions were made and prizes given. In addition to the awards presented to Spence there were nine others in various categories, such as scratch built, kit, etc. These were followed by raffle drawings, in which Joe Jordan won a table saw. Then it was time to say our goodbyes to people we won't see again until next year, load the models and be on our way. Most of our contingent left immediately afterward.

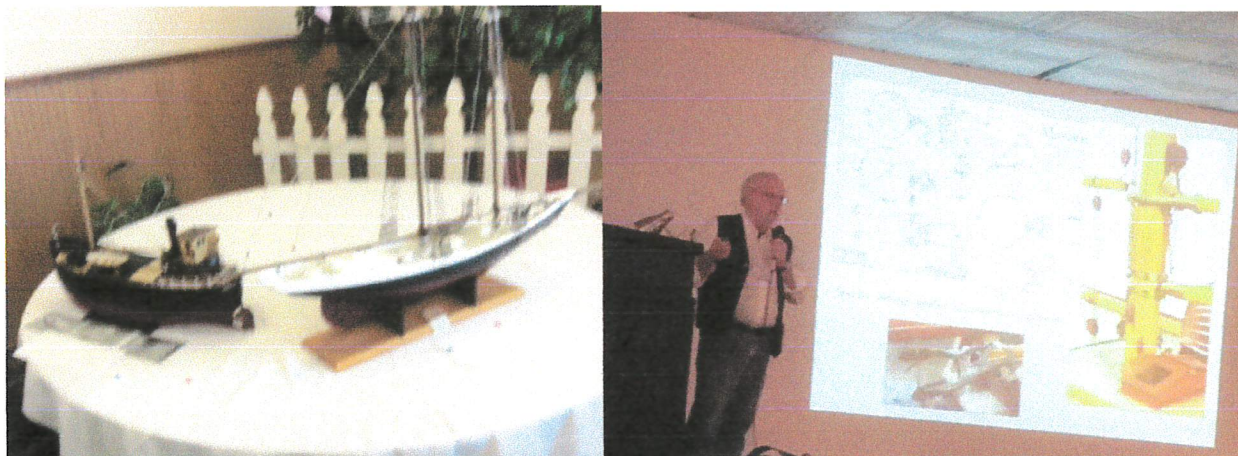
NEXT YEAR WE ARE THE HOSTS! Much of the work is routine, it just has to be done. We've paid the deposit for the Conference Center for 30 April 2016. We have the list of vendors who were there this year to contact for next. The local Connecticut Marine Model Society provides a lot of support. We need to be passing along information about running this event and your help is needed. Jim Nutt has agreed to co-chair; we need people to co-chair the registrar and treasurer, as well as others to provide assistance. We expect to make it as successful as the others have been. Thank you!

Pat Leaf

*The Ship Model Society of New Jersey sponsors this award in honor of one of their now-deceased members whose work was exemplary.



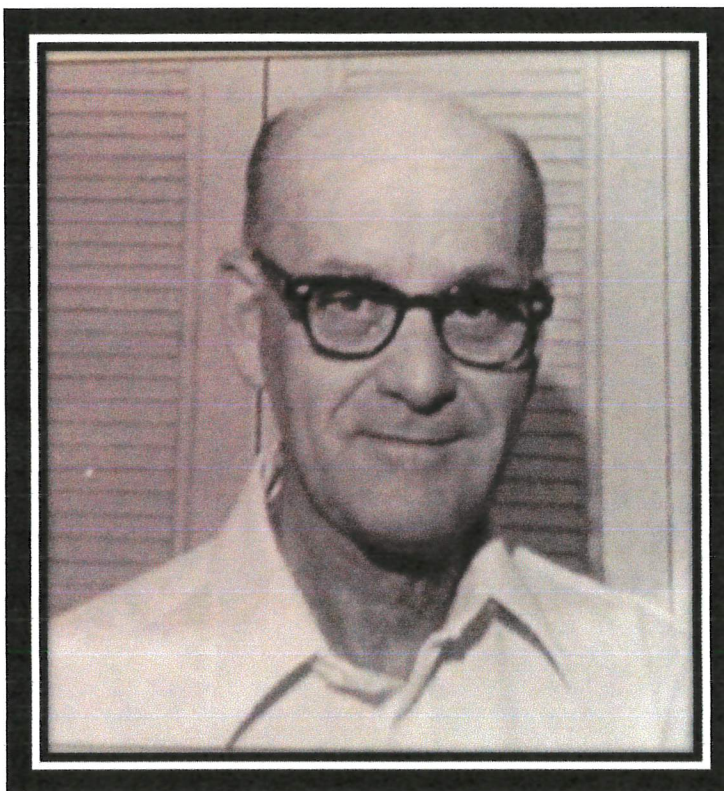
2015 33rd NORTHEAST REGIONAL CONFERENCE AND MODEL SHOW continued:



... and Spence Delin's model that won the Jim Roberts' Memorial Award—*congratulations!*
(Northeast Conference photos by Tom McElhinney)



IN MEMORIUM



1912-2015

"In 1935 **William L. Crothers** started employment in the Design Division of the Philadelphia Navy Yard (later named the Philadelphia Naval Shipyard). In the same year he joined the Philadelphia Ship Model Society. These two maritime organizations formed his life for the next 37 years until he retired from the shipyard in 1972. His membership in the Philadelphia Ship Model Society however continued.

"In 1942 William, along with a friend, started to produce plans for the use of ship model makers, using the logo SEA GULL PLANS. These plans, which are still available, were of American naval and merchant vessels of both the age of sail and modern steel construction. His interest in flag hoist signals and house flags originated as part of the plan production process to develop a complete picture of any vessel seemed to demand inclusion of her flags and signals.

"After the death of his associate in 1974 William continued production of their plans but slowly found himself drawn to subject of flag hoist signaling in detail. Over the he and his wife [who preceded him in death—his beloved Marge] visited many museums along the east coast ferreting out the far-flung information that was tucked away in each facility. There was much to be found and, as is usually the case, the subject kept growing as new information was found and collected

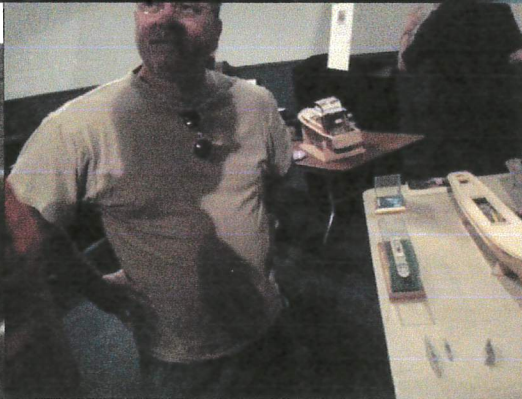
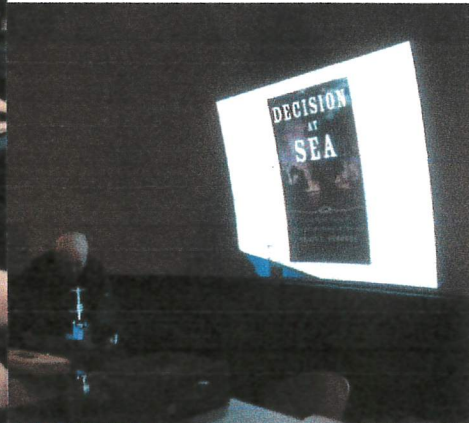
"Between 1990 and 1996, he partially shelved the project. In that period he gather together all the information accumulated over the course of fifty years and wrote a book titled "the American-Built Clipper Ship, 1850-1856" which was composed to a great degree of data used in the drawing of SEA GULL PLANS. Upon completion of the book, he turned again to the flag hoist signal project and completed the subject of house flags to the fullest extent that he was able. In 2001, the volumes were presented to Mystic Seaport Library in order to insure that they would safely survive for posterity as a convenient source of reference on the subject."

From Manuscript Collection Registers, Mystic Seaport the Museum of American and the Sea

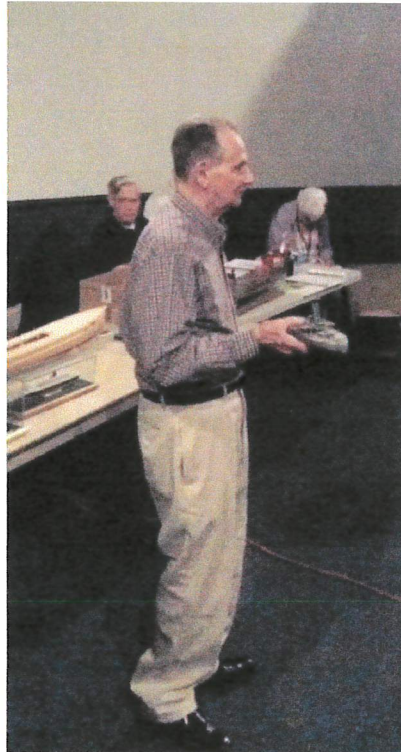
"**Bill,**" as we knew him was a founding member of the **PSMS**. We also know in 2013 he published "The American-Built Packets and Freighters of the 1850s: An Illustrated Study of Their Characteristics and Construction". Indeed Bill's work will "survive for posterity" and his wisdom will live in the hearts and work of **PSMS**—you will always be a very important part of our lives. *Rest in Peace.*



PSMS *MAY* MEETING



PSMS *MAY* SHOW N' TELL



1. **Ed Leaf** presented a model of the monitor *Miantonomah* that fought in the Spanish-American War. It sailed from America to the Philippines and then back to the United States. The model is scratch built in 1/16 inch to the foot scale. This model shows the development of the monitor over the decades following the American Civil War.



2. **Dennis Levitt** presented a picture of the battleship *New Jersey* that is printed on canvas—it is remarkable!

PSMS *MAY* SHOW N' TELL

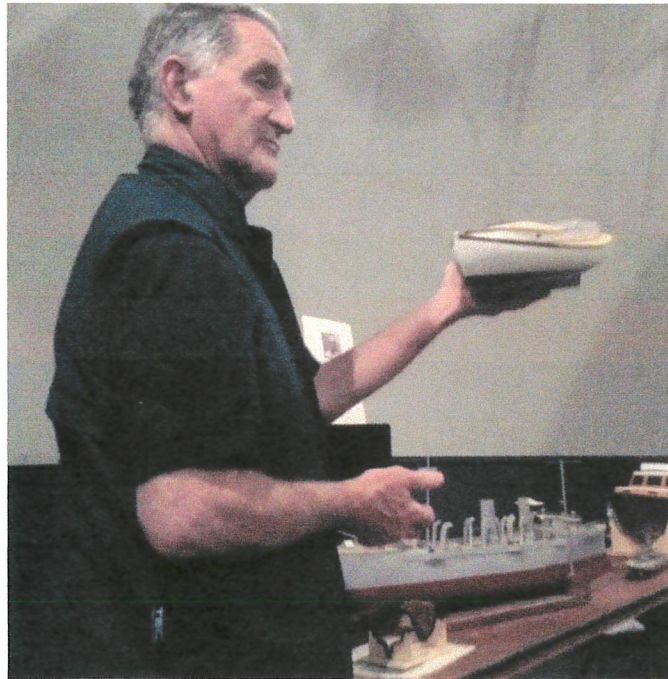


3. The sub chasers keep returning. **Joe Jordan** is demonstrating his almost completed (90%) sub chaser. **Joe** has completed sea trials. The model has three rudders controlled by two motors, a hard over rudder cuts power to the inside motor. The model has LED lighting for running lights and the pilot house.



4. **Joe Gudonis** returned with his 37 foot Egg Harbor model that began with a photograph and is now nearing completion. Joe also presented a series of pictures of the building of a new mast for the tall ship *Gazella*.

PSMS *MAY* SHOW N' TELL



5. A catboat "slowly progressing" according to the builder **Jim Nutt** was shown again. It is a scratch built 3/4" = 1 foot scale model of a fishing boat circa 1885.



6. **Mike Zimmerman** brought a Revell model of the *Queen Mary 2* in 1/1200 scale. **Mike** says this was an easy build next to the much larger models of the *QM2* that he has completed. Instead of wine or candy **Mike** is bringing the model as a present for friends met on a previous voyage. **Mike** also brought in a diorama in 1/700 scale of action in the Battle of Midway which shows a sinking carrier, planes attacking, and in 1700 scale Ensign Gay hiding under his life jacket. (Unfortunately no picture is available.)

PSMS *MAY* SHOW N' TELL



7. Another 1/96 model was presented by **Francine Serratore**, the protected cruiser, *Baltimore* (1898). This is a scratch build that **Francine** was planning for a Great White Fleet. With some new information she plans to eventually refit guns and other parts. The *Baltimore* was the second in line in the Battle of Santiago Bay and also present at the bombing of Pearl Harbor.



8. **Fred Signor** is another modeler working on a sub chaser. **Fred** demonstrated the placement and working parts of the ship as now built.

(Photos from the May meeting including SHOW N' TELL were taken by **Mike Weaver**.)

Now Hear this ...



Workshop on the Water, Independence Seaport Museum

Become a Member of ISM ...Independence Seaport Museum members receive free admission to the Museum, Workshop on the Water (shown above), the cruiser *Olympia* and submarine *Becuna*, as well as invitations to exhibit openings, discounts in the gift shop, special member pricing for special programs and events and preferred access to boating opportunities on visiting tall ships.

Membership levels: Individual - \$45 (benefits apply to one person); Family - \$75 (benefits apply to up to five people in the same household); see their website for other levels.

NOTE: As a member of PSMS you are considered a **VOLUNTEER** at ISM—in addition to working in the SHACK, you are encouraged to volunteer at other events sponsored by the museum!

See the different areas where we are needed and –

VOLUNTEER!

NOTE: All volunteers need to sign in and out from the museum from now on. The sign in book is located by the front desk on the podium. Boat shop volunteers will continue to sign in and out at the boat shop. Ships volunteers will sign in and out on the ships, unless they are coming into the museum and then they would sign in and out there as well. For PSMS, you will also need to sign in and out at the front desk.

Therefore if there is an emergency we will know who all is in the building at that time. If there is an emergency inside the museum, please exit the building and meet at the Walnut Street steps. For those on the ships, you will meet on the landing in front of the ships.

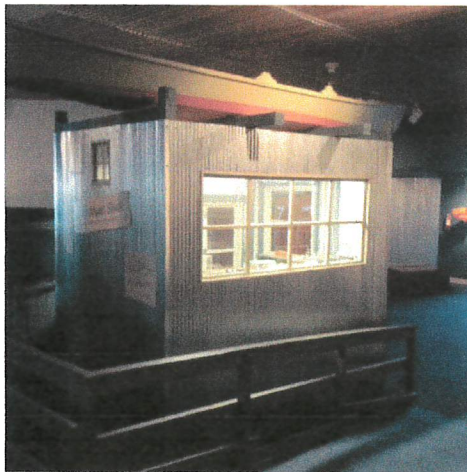
If you have been by the museum lately, you will have noticed the big changes happening on our galleries. We have taken down a large part of the main exhibit to make way for our new schooner, *Diligence II*. It is exciting too for the Seaport Museum and we hope you can come down and lend a hand. (See pictures on the next page.)

Now hear this continued ...

DILIGENCE II UNDER CONSTRUCTION AT ISM



The skeleton of the ship is in place! (Picture to the Right). The transom end of the Schooner Diligence II, 65' long at the deck. The deck will be about 2' off the floor, and the hull fully planked with 1 1/2" poplar. The planks are 5" wide, and the public can watch the construction this week. The 2 masts will pierce the ceiling. *Joe Jordan*



THE SHACK

Keep the lights on! Volunteer! Contact Joe Jordan (jjvtown@aol.com).



GET YOUR REWARD!

Volunteers have the opportunity to receive rewards for the hours they give to the museum. By logging your volunteer hours in VIC Net, which is accessible through the Museum's website on the volunteer page, you can receive free museum gear. ISM will be rewarding goals of 100, 500, 1,000 hours and more. Some volunteers might have already been trained to use the new logging system, but if you haven't, Spencer Anderson will be happy to train you.



NOTE: Steamship Historical Society of America

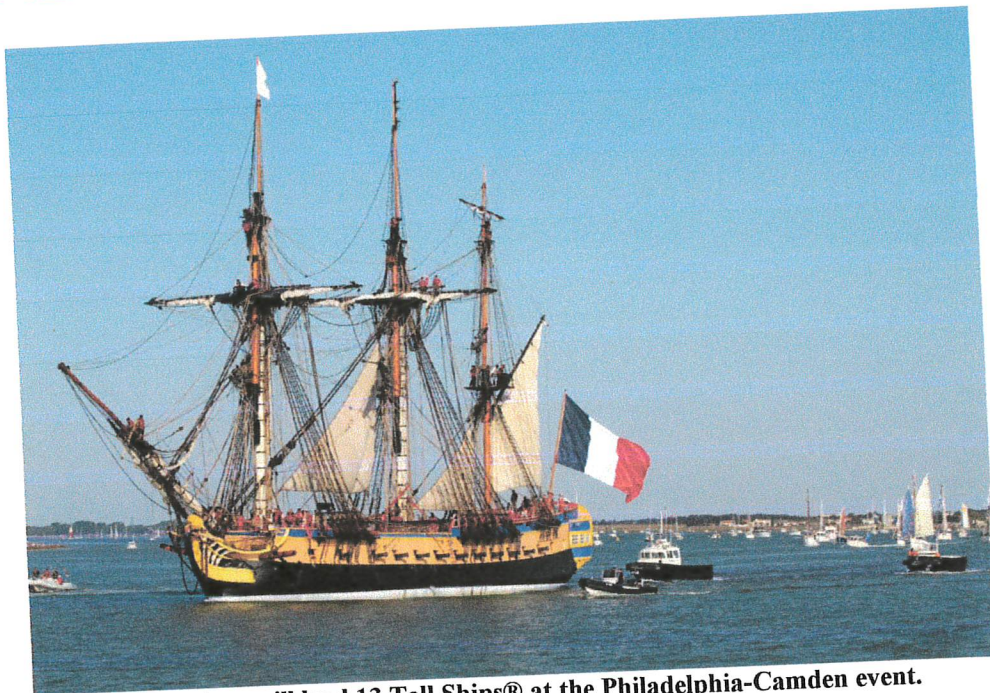
meets the third Sunday of each month at ISM from 2-4:30 PM. Visit their website at

<http://www.sshsa-delawarevalley.org/>.



Now hear this continued ...

TALL SHIPS Philadelphia • Camden



L'Hermione will lead 13 Tall Ships® at the Philadelphia-Camden event.

TALL SHIPS PHILADELPHIA-CAMDEN 2015

Tickets are on sale NOW. Click [here](#) to purchase or call 877-4FLY-TIX. Tickets are good for attractions in both Camden and Philadelphia.

CALL FOR VOLUNTEERS !!!

We have been invited to join the team of volunteers that will support the Tall Ships Philadelphia + Camden event this coming June 25-28. There are several positions that could be appropriate to any of us who have an interest and knowledge of ships. The following are descriptions of a handful of volunteer roles that PSMS members would be ideal candidates for, and would get you close to the action.

Team Leads

Provide support and supervision of volunteers in the variety of volunteer positions being staffed. Handle check-in of volunteers, ensure waivers are signed, provide information materials and act as liaison between staffed positions and relieve for breaks as necessary.

Ship Queue

Work on or near the ships providing assistance and information to event attendees and the crew from the ships. Assist in maintaining orderly lines and answering questions.

(continued)

VIP / Sponsor Liaison

Provide assistance and information in sponsor/VIP tent at and during on-board sponsor parties. Coordinate with catering staff to ensure tent/ship is maintained, sanitary and stocked with refreshments. Assure sponsors and guests feel welcome at all event-related activities.

ASK ME!

Walk through festival and event grounds assisting event attendees with information on performance times, tours and general event information. Coordinate lost children with First responders, communication center and event staff. Provide information on first aid. Have a thorough knowledge of event operations.

Liberty Ball Hosts

Liberty Ball is a private party at the event to show appreciation for sponsors, VIP's and those that purchase a Gold event pass. You will assist event staff with greeting attendees, answering questions, problem solving and ensuring event area is safe, sanitary and well maintained.

Transportation Captain

Coordinate transportation for crew on ship errands and business. Requires valid driver's license

For those who are interested, the web site to apply for volunteer roles, request your areas of interest, and to state your shirt size is as follows:

<http://tallshipsphiladelphia.com/get-involved/volunteer-application/>

The tall ships last visited Philadelphia 15 years ago. It may be another 15 years until they visit again. Apply soon so you don't miss the opportunity to play a role you enjoy, and that gives you an insiders perspective on these beautiful sailing ships. Please let Alice (alice9books@verizon.net) know when you apply so we can feature PSMS's participation in the newsletter and on the web site.

Spencer Anderson
PSMS Webmaster

... and more about the event:

Adding excitement to a waterfront that is already bubbling with activity, Tall Ships® Philadelphia-Camden is slated to bring majestic vessels up the Delaware River in early summer on June 25-28. Tall Ships® Philadelphia-Camden has the distinction of being the largest sailing event in the United States in 2015.

With over a dozen magnificent domestic and international ships planning to attend Tall Ships® Philadelphia – Camden, visitors can catch a glimpse, step aboard and even set sail on some of the most meticulously crafted ships of yore. The unique two-sided waterfront affords increased accessibility for visitors from both sides of the river and creates the perfect venue for a myriad of festival attractions and of course, Tall Ships.

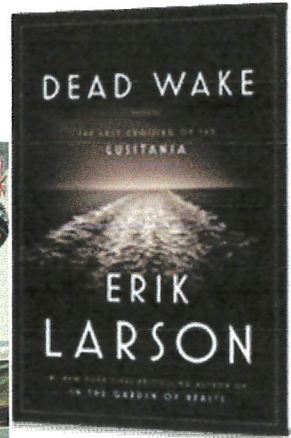
The event is sponsored by a collaboration of four Delaware waterfront organizations: the Delaware River Waterfront Corporation, Coopers Ferry Partnership, Adventure Aquarium and Independence Seaport Museum.

An abundance of attractions will accompany the Tall Ships such as historical reenactments, live music, dance, youth sail training, a craft beer garden and the regions finest fare.

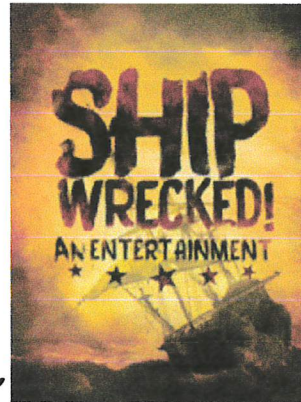
Tickets are on sale NOW. Click [here](#) to purchase or call 877-4FLY-TIX. Tickets are good for attractions in both Camden and Philadelphia.



Now hear this continued ... recommended reading:



From the #1 *New York Times* bestselling author and master of narrative nonfiction comes the enthralling story of the sinking of the *Lusitania*, published to coincide with the 100th anniversary of the disaster.



Recommended seeing:

Shipwrecked! An Entertainment

The Amazing Adventures of Louis de Rougemont (as Told by Himself)

...at the INDEPENDENCE STUDIO at the Walnut Street Theatre from 6 October-1 November 2015. Tickets go on sale to the general public starting 16 August; call 215-574-3550, ext. 6 for tickets. An old man hobbles onstage and declares, "I'm about to tell you a story. A fantastic and amazing story! A story all the more remarkable because every word of it is true." So says Louis de Rougemont. His brave and amazing adventures left nineteenth-century England spellbound. Dare to be whisked away by his heroic tale of the high seas, filled with exotic islanders, flying wombats, giant sea turtles and a monstrous man-eating octopus! Inspired by a true story, Pulitzer Prize-winner Donald Marguiles' *Shipwrecked* examines how we're willing to blur the line between fact and fiction in order to leave our mark on the world.



Now hear this continued ... future opportunities:

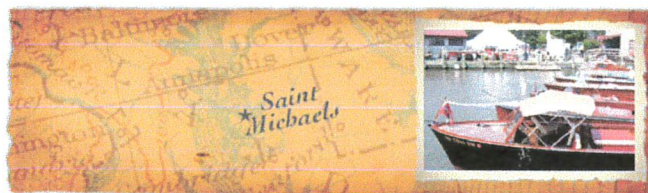


Armed Forces Day, 16 May at 2 PM

Author Michael Gillen will give a lecture on merchant marine survivors of World War II.



NS Savannah—visit on MARINE DAY in Baltimore at 4601 Newgate Avenue, Baltimore, Maryland 21224, Pier 13 in Canton, Saturday, 17 May 2015.



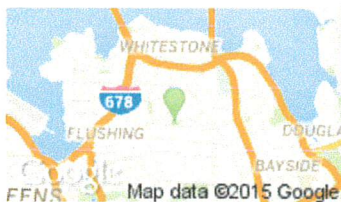
The Antique & Classic Boat Show, 19-21 June.

Please see their website for details: www.chespeakcbayacbs.org

Chesapeake Bay Maritime Museum

St. Michaels, Maryland

Friday 11-5 • Saturday 10-5 • Sunday 10-2



**EMPIRE STATE MODEL MARINE REGATTA,
25 JULY @ Bowne Park, 155-07 29th Avenue,
Flushing, NY from 8 AM-6 PM.**

Now hear this continued ... future opportunities:



**MODEL GUILD OF THE CHESAPEAKE BAY
MARITIME MUSEUM, the NORTH AMERICAN STEAMBOAT MODERLER'S
ASSOCIATION, and the
WASHINGTON SHIP MODEL SOCIETY**

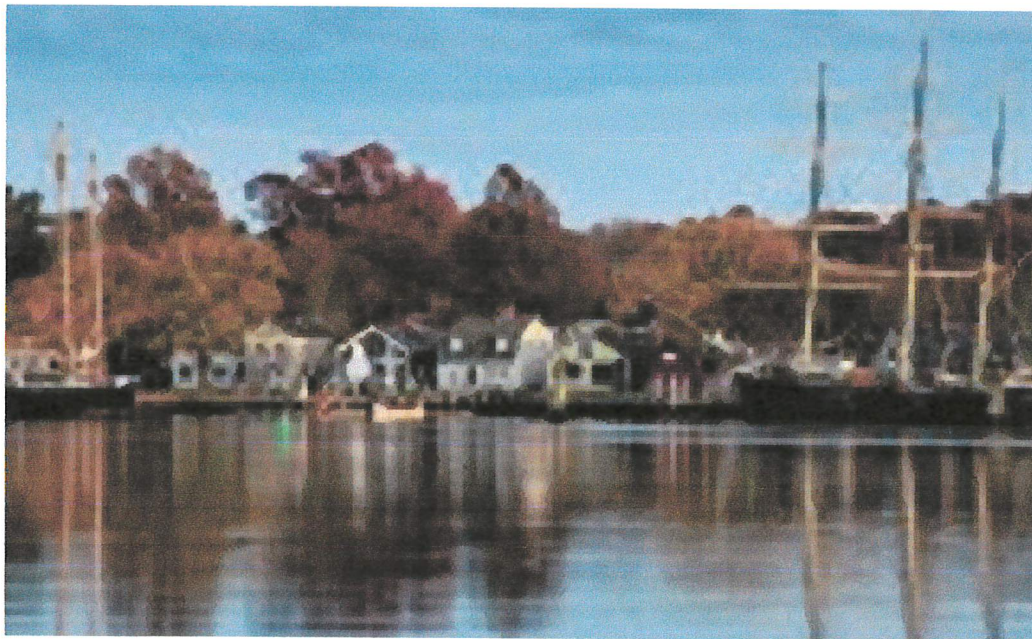
3 & 4 October 2015



**NAUTICAL RESEARCH GUILD 2015
CONFERENCE**

MYSTIC, CONNECTICUT 22-24 OCTOBER

The conference will be at the MYSTIC HILTON which is less than one mile from the Seaport.



(continued)

Now hear this continued ... future opportunities:

THE NAUTICAL RESEARCH GUILD

"ADVANCING SHIP MODELING THROUGH RESEARCH"

Annual membership includes our world-renowned quarterly magazine, Nautical Research Journal, which features photographs and articles on ship model building, naval architecture, merchant and naval ship construction, maritime trade, nautical and maritime history, nautical archaeology and maritime art.

Other benefits include discounts on annual conferences, ship modeling seminars, NRG products and juried model competitions which are offered exclusively to Guild members. We hope you will consider joining our ongoing celebration of model ships and maritime history.



YEARLY
MEMBERSHIP
\$48.00 USA
\$60.00 Foreign



For more information contact us at www.thenrg.org



THE SSMA JOURNAL:

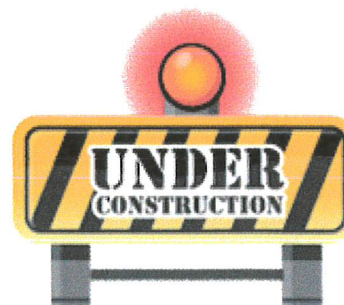
Lots of news and pictures about PSMS in their editions. Become a member of SSMANA; Annual dues are \$25 and sent to John Amann, 758 Regency Park Drive, Crystal Lake, IL 60014. Your check should be made payable to SSMA. Visit them on the web at SSMANA.ORG.



... AND ON 16 AUGUST, TASK FORCE 50
REGATTA AT LAKE REEDMAN NEAR YORK, PA!

Now hear this continued ...

NEW PSMS WEBSITE!!



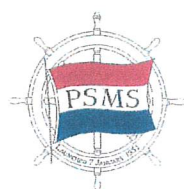
YOUR PATIENCE HAS BEEN APPRECIATED—NEW WEBSITE—

WHERE THE WORK IS UNDER CONSTRUCTION!

<http://philadelphiahipmodelsociety.com>



PSMS SHIRTS & CAPS WITH SOCIETY LOGO



We can order shirts and caps with the embroidered Society logo and for the first time women's sizes are available.

Prices are:

Long-sleeved polo shirts, navy blue, men's sizes \$35.00
available in small through 4XL

Add \$2.00 for 2XL, \$3.00 for 3 XL, and \$4.00 for 4 XL

Women's sizes small through 2X

\$35.00

Short-sleeved polo shirts, navy blue,

men's sizes small through 6 XL and tall in XL through 3X \$28.75

Women's sizes available sizes small through 3XL

\$28.75

Hats 6 panel wave cap, navy with white trim

\$14.50

There is interest in woven fabric shirts and I will have catalogues showing them as well as the knit shirts. The prices in the catalogues are not the final cost with the logo but are expected to be \$30.00 or less, including the embroidered logo.

If you would like to place an order please let Pat Leaf know at pjlebl@comcast.net. Please be sure of your size.





2015 PSMS OFFICERS & EXECUTIVE BOARD

President: Tom McElhinney (shipshape51@verizon.net); Vice-President: Fred Signor: (fsignor@comcast.net);
Secretary/Editor: Alice McElhinney (alice9books@verizon.net); Treasurer: Ed Leaf (pjlebl@comcast.net).

Members-at-Large:

John Christinzio (johnchristinzio@hotmail.com); Spence Delin (sdelin@verizon.net); John Esposito (jimatango622@verizon.net);
Joe Gudonis; Joe Jordan (jjvtown@aol.com); Pat Leaf (pjlebl@comcast.net); Jim MacIntyre (JMacin5573@aol.com);
Josef Messmer (jrm8391@comcast.net); John Oddo (johnmariao.1959@gmail.com)
Rick Rathgeber (rrathgeber@usa.net); Francine Serratore (fserratore@verizon.net); Mike Weaver (eghannah@gmail.com);
Mike Zimmerman (barbarazimm@verizon.net)

Webmaster: Spencer Anderson

