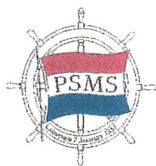


2/15



QUARTERDECK

THE NEWSLETTER OF THE PHILADELPHIA SHIP MODEL SOCIETY

Launched 7 January 1931

<http://philadelphiahipmodelociety.com>

February 2015

Philadelphia, Pennsylvania

33rd NORTHEAST REGIONAL SHIP MODEL CONFERENCE & SHOW: 25 APRIL 2015



The 33rd Northeast Regional Ship Model Conference & Show in New London, Connecticut, is the last weekend in April—the 25th this year. See Pat Leaf's note and appeal on page 4 of the QUARTERDECK. **VOLUNTEER! Contact Pat at pjlebl@comcast.net.**

On page 5 of the QUARTERDECK you'll find Mike Swanson's message from the host group, the USS Constitution Model Shipwright Guild, with information on how to register with a link to that site.

INSIDE THIS ISSUE

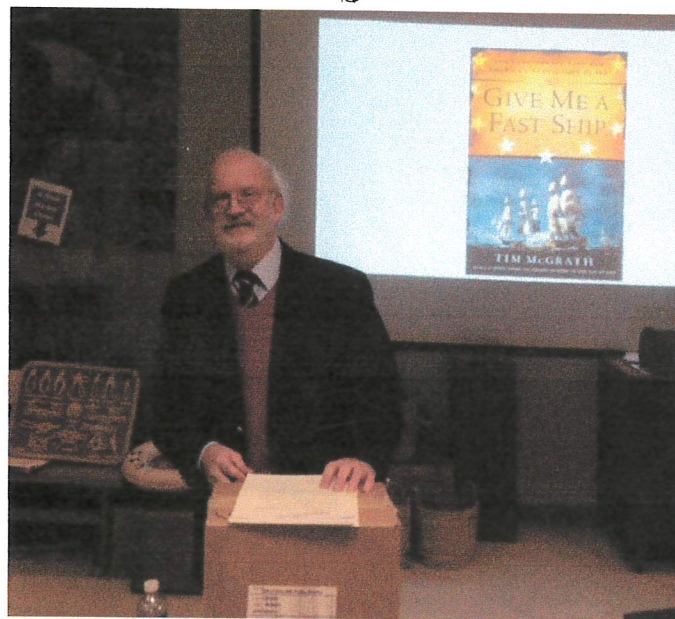
- 1 NORTHEAST SHIP MODEL
CONFERENCE & SHOW
- 6 MEMBER OF THE MONTH
- 7 FEBRUARY MEETING
- 9 FEBRUARY SHOW N' TELL
- 12 NOW HEAR THIS ...

"IMPORTANT DOCUMENTS CAME RIGHT FROM HERE ..."

Tim McGrath, Author of *Give Me a Fast Ship*

The 813th meeting of the Philadelphia Ship Model Society (PSMS) was held at the Independence Seaport Museum (ISM) on the fifth day of February 2015. President Tom McElhinney called the meeting to order at 1903 and opened with the Pledge of Allegiance. Twenty-seven persons including our guest speaker and author Tim McGrath were present.

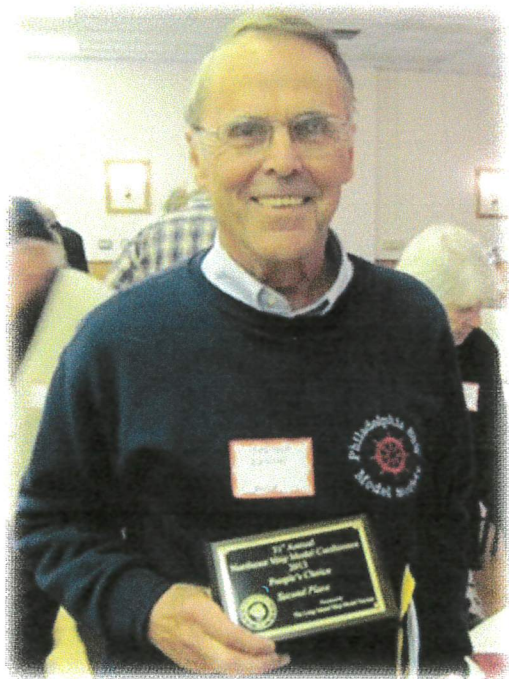
(continued page 3)



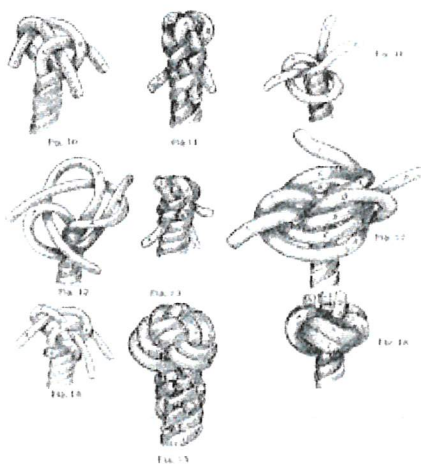
Tim McGrath, author of *Give Me a Fast Ship*, said "It is difficult to think of our Navy without tears." Tim's book is about the Continental Navy. His earlier book, *John Barry: An American Hero in the Age of Sail*, was first recipient of the Commodore Barry Book Award for Maritime Literature, and was presented to McGrath at Frances Tavern, New York City in the spring of 2014. *Thank you Tim for sharing your expertise with PSMS!*



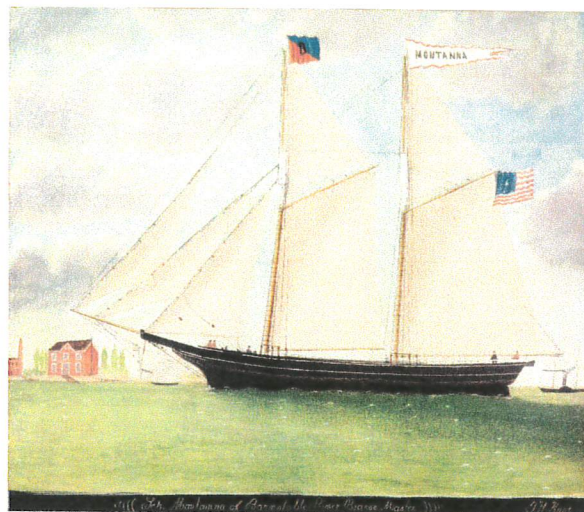
NEXT PSMS MEETING **5 MARCH** **SPENCE DELIN** **ROPE MAKING**



Our own Spence Delin "will explain the principles behind making different sizes of rope out of several untwisted strands. I will bring for demonstration my rope making machine which is homemade mostly from old erector set parts." [Spence is shown above in 2013 at the Northeast Ship Model Conference and Show when he received the coveted Jim Roberts Award (best model displayed).]



FORTHCOMING EVENTS



From ISM Collection
Among the Continuing Exhibits at the Independence Seaport Museum:
Tides of Freedom: African Presence on the Delaware
Shipboard Life: Exhibit aboard Olympia
SS United States: Charting a Course for America's Flagship
Olympia: Launching the American Century
Marking Time: Voyage to Vietnam

- 5 March 2011: PSMS MEETING; PROGRAM; Spence Delin on Rope Making
- 2 April: Craig Bruns, Chief Curator, ISM "New Treasures at ISM"
- 25 June: CELEBRATION OF TALL SHIPS
- 3 July: FIREWORKS SPECTACULAR
- 12 September 2015: COAST DAY at ISM
- 11 November: VETERANS DAY

THE PHILADELPHIA SHIP MODEL SOCIETY

Launched 7 January 1931
(See listing of PSMS Officers and Board of Directors on page 19.)

The Philadelphia Ship Model Society (PSMS) meets on the first Thursday of each month at the Independence Seaport Museum (ISM) at 1900 hours. ISM is located at Penn's Landing, 211 South Columbus Boulevard, Philadelphia, Pennsylvania. Guests are always welcome! (For detailed directions to ISM, please see our website at <http://phillyshipmodel.com>). PSMS' annual dues are \$35.00 for an INDIVIDUAL MEMBERSHIP; \$40.00 for a FAMILY MEMBERSHIP (includes member, as well as spouse with children FREE). When attending a meeting discounted parking is available at the Hyatt Regency Hotel (garage entrance is next to ISM). Please take your parking ticket to the front desk at ISM and have it stamped. This allows parking at the facility for \$12.00. Municipal parking is also available in front of ISM; however, the rates are higher and vary with the season. PSMS also reimburses attendees with \$5.00 toward parking.

The *QUARTERDECK* is the newsletter of the Philadelphia Ship Model Society and is published after each monthly meeting. Copyright © 2015 Philadelphia Ship Model Society. All rights reserved.

QUARTERDECK STAFF

Editor: Alice McElhinney (alice9books@verizon.net)
Photographer: Mike Weaver (eghannah@gmail.com)
Distributor of B/W Edition: Ed Leaf (pjlebl@comcast.net)
Consultants: Ron Spicer (rspicerr33@aol.com)
 Jerry Kates (AdvPr1920@aol.com)
Webmaster: Spencer Andersen (tallpine@aol.com)
Letters to Editor: 7900 Ivy Lane, Elkins Park, PA 19027 USA;
Phone: +215-635-2988.

PSMS FEBRUARY MINUTES

(continued from page 1)

The Secretary's minutes were approved as printed in the January *QUARTERDECK*. Ed Leaf presented the Treasurer's report that was approved.

Because of the late arrival of a projector, the order of the meeting was changed. Kudos to Jesse Lebovics at ISM who came to our rescue! Thanks, Jesse and thank you for expressing appreciation for the donation of the lathe (contact at the Shack) which is housed on the Olympia and available for PSMS members' use.

The **President** thanked all who braved the cold of the evening and welcomed our guest speaker. Congratulations were extended to **Ron and Jean Spicer** who were celebrating their 55th wedding anniversary

SHOW N' TELL (Please see pages 9-12 of the *QUARTERDECK*.)

PROGRAM

Fred Signor introduced our guest speaker **Tim McGrath** who gave a fascinating look at the Continental Navy.

BREAK—with refreshments including a Mardi Gras King Cake

OLD BUSINESS

1. THE SHACK: **Joe Jordan** gave his monthly plea for volunteers.
2. PIRATE SHIP, *Diligence II*: Joe has been providing picture updates of its construction (see page 13).
3. 1st MID-ATLANTIC SHIP MODEL SHOW & CONFERENCE (13 June): **Pat Leaf** reported no updates from WSMS. The consensus of PSMS is that we cannot support this venture at this time.
4. Swedish Museum. PSMS approved our participation in this forthcoming event. **John Christinzio** has been in contact with their Board about our participation and will have further details in March.
5. Regatta or Fun Float at ISM on 12 September **Coast Day**. **John Christinzio** will schedule a meeting with ISM's **President, John Brady**.
6. First State Mini Club: 38th Annual Show & Sale, Sunday, March 23rd. (See page 15 for details).
this event.
7. Website: **Spencer Andersen** received the following volunteers for the PSMS Website Early Adopters: **Joe Jordan, Pat Leaf, Rick Rathgeber, Jim MacIntyre, Fred Signor, Alice McElhinney, John Christinzio, Todd Wardwell, and Spencer Andersen**. This group will upload photos to the galley, adding events to the calendar, and start blogs and forums.

NEW BUSINESS

8. ISM's request for volunteers at **WHYY** has been cancelled.
9. WOODS HOLE BOAT SHOW (18-19 April): See report on page 16 of the *QUARTERDECK*.
10. 33rd NORTHEAST REGIONAL SHIP MODEL CONFERENCE and SHOW (24 April in New London, CT). **Pat Leaf** is PSMS' representative and we are hopeful to again this year have one of the largest representations. **Pat** brought to our attention that in 2016 we are the host club. She requested that she would Co-Chair this event with another PSMS member. She stressed the importance of having younger members participate in order to pass on these responsibilities. See pages 1, 4 and 5 of the *QUARTERDECK* for further details.
11. **NEXT MEETING: Fred Signor**. [Note: Fred (our VP) was in a car accident on 6 February and his neck brace does not allow him to drive for 3-months. **Get well soon, Fred!**] **Spence Delin** has agreed to lead the March program on **ROPE MAKING**.
12. **Mike Weaver** won the 50/50 drawing which he graciously gave to PSMS' treasurer.
13. **ADJOURNMENT**:
The meeting was adjourned for clean up at 2124.
Respectfully submitted,
Alice McElhinney



NEW LONDON, CONNECTICUT 33rd NORTHEAST SHIP MODEL CONFERENCE & SHOW, 25 APRIL 2015



New London, CT and Mystic Seaport which features the last wooden whaleship in the world, the Charles W. Morgan.

IMPORTANT NOTE FROM PAT LEAF ...

The conference in New London, Connecticut, is the usual last weekend in April, the 25th this year. I've made inquiries about accommodations and these are two of the options: Holiday Inn Express, Mystic, Friday and Saturday nights are the same price, \$129.00 for both double and king rooms, PLUS 6.7% tax. The price is \$122.52 with the AARP discount, again PLUS 6.7% tax. The telephone number is 860 572-9065. The Howard Johnson Inn has a special rate, \$92.65 for both types of rooms, again PLUS the 6.7% tax. The telephone number is 860 536-2654. Many travel experts recommend that facilities be contacted directly rather than going through the toll-free numbers. If you plan to go please make your reservations soon; they can be canceled if there is a change of plans but probably would not be available at the last minute.

FOR THE CONFERENCE: We need two people to participate in judging the models belonging to those who have designated that they want to be included, which will be clearly marked. One is for the regular conference categories, best of show and people's choice, and one for the Ship Model Society of New Jersey's Jim Roberts award.

In addition, we need someone to do a tabletop demonstration of a specific model building technique.

PLEASE LET ME KNOW IF YOU ARE WILLING TO HELP. This year's hosts, the Constitution group, needs to know as soon as possible. **THANK YOU!**

PSMS SPONSORS THE CONFERENCE NEXT YEAR and at the February meeting I requested that I chair the committee, as I have done for many years, and **MOST IMPORTANTLY** that members who go often **and are younger** co-chair the three primary responsibilities, chair, registrar and treasurer. Those of us who have been holding these jobs are in our 80s or close to it. The rotation is every six years and in order to have continuity it is time to pass along those positions. Many other members share the preparations so not all the work must be done by those three, such as arranging for a speaker, door prizes and vendors. There is a list of vendors who attend regularly, and the Connecticut club supports the conference with advertising and any other assistance the off-site clubs need.

REGISTRATION INFORMATION CONTINUES ON NEXT PAGE

NORTHEAST SHIP MODEL CONFERENCE AND SHOW continued:

We have always had the largest attendance other than the Connecticut club and we hope to do so again this year. The conference is well worth the trip, and it gives us an opportunity to get better acquainted with members of other ship modeling organizations as well as members of the PSMS. Traditionally we have met for dinner Friday evening and those who don't leave on Saturday after the conference meet again at a different restaurant that evening. Mystic Seaport is a wonderful place to visit and there are many other interesting sites.

WE HOPE TO HEAR FROM YOU AND TO SEE YOU THERE!!!!

Pat Leaf

... AND THE OFFICIAL NOTICE FROM THE HOST GROUP:

The USS Constitution Model Shipwright Guild (USSCMSG) is hosting the 33rd annual Northeast Joint Clubs Conference and Model Show. The conference will be held at the Port 'N' Starboard Convention Center, Ocean Beach Park, New London,

Connecticut on Saturday, April 25th, 2015. The show will run from 9:00 am to 3:00 pm. **Information about the conference and links to the conference flyer, printable registration form and an online registration form can be found on the attached link:** <http://www.uscmsg.org/home/nsmc>. The online registration form accessible through this link can be filled in online, but you can't pay online. After filling out the online Registration form, print it out and mail it along with a check payable to USSCMSG. On the check, please write the name of the person or persons who are being registered. The form and the check shall be sent to Dave Lash, Purser, 42 Davelin Road, Wayland, MA 01778. Please note that I have also attached to this email the pdf files for the registration form and conference flyer.

Please contact your club's membership and inform them that the registration process has begun. In addition, if any club has a member who would like to offer a table top demonstration, please ask them to contact Mike Swanson at mike.swanson1@comcast.net, or by telephone at 978-948-2106.

On behalf of the USSCMSG, I want to thank you in advance for your assistance in making this event a success. Any assistance you can provide in the distribution of the conference flyer and notification to local media outlets is greatly appreciated.

Regards,

Mike Swanson
Vice Admiral
USSCMSG



Other area attractions (L-R)--Goshen: Submarine Force Museum; New London: US Coast Guard Museum; Fall River, MA: Battleship Cove.

MEMBER OF THE MONTH RICK RATHGEBER

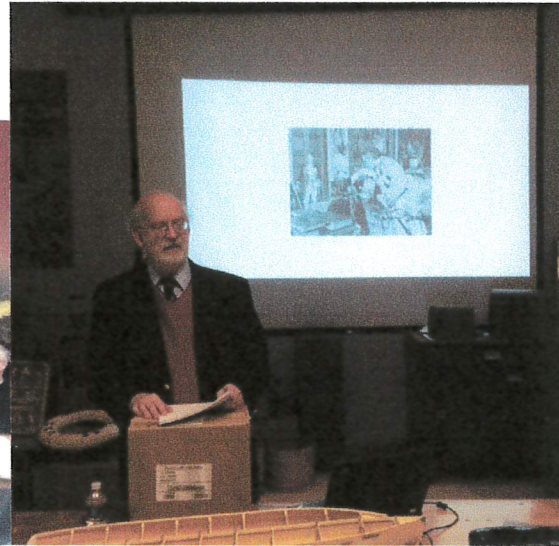
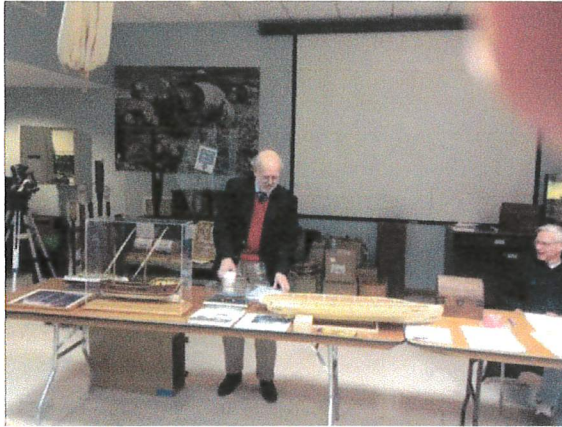


I have been building models most of my life starting out with wooden piper cub models. I was given a scientific model of the clipper ship sovereign of the seas when I was in high school and I carried it with me through most of my duty stations while I was in the Army. When I started medical school I had little money and decided that I was ready to attempt this model. In the kit was a letter and application from NRG chairman Merrit Edson who offered membership for the price of \$10 a year. I started attending the NRG annual meetings and while there met a fellow Furlong resident Ray Lynch. He encouraged me to join the Philadelphia Club but it took several years until and the magic words, "I'll drive," before I joined. The rest is history. In recent years I haven't had as much free time to build models but my enthusiasm for the club has never waned. I have always been most impressed by our membership. We have such fine modelers who never are standoffish or arrogant despite their tremendous talents. I hope that someday I will finally retire and still have my eyesight and dexterity enough to do models. My pie baking comes from 11 years of restaurant work in high school and college and is one way for me to repay the kindness shown to me by the club.

Rick Rathgeber

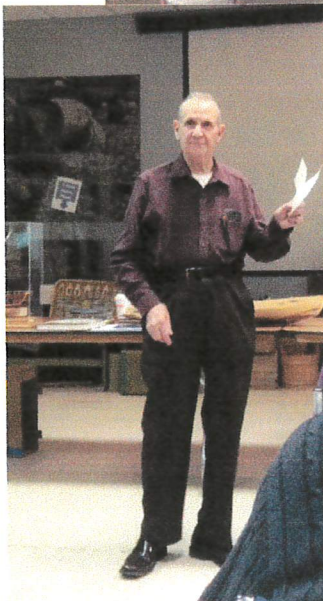
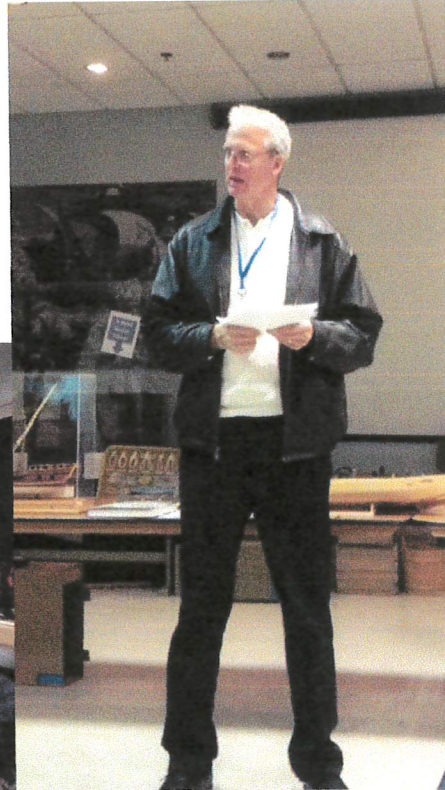
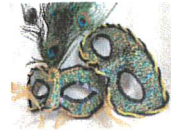
[Editor's Note: Now we understand why Rick is such an outstanding baker! Rick is a former President of PSMS and currently serves on the Executive Board! Thank you, thank you, Rick!]

PSMS *FEBRUARY* MEETING



“Laissez les bon temps roulez!” or “Let the good times roll!” ➡

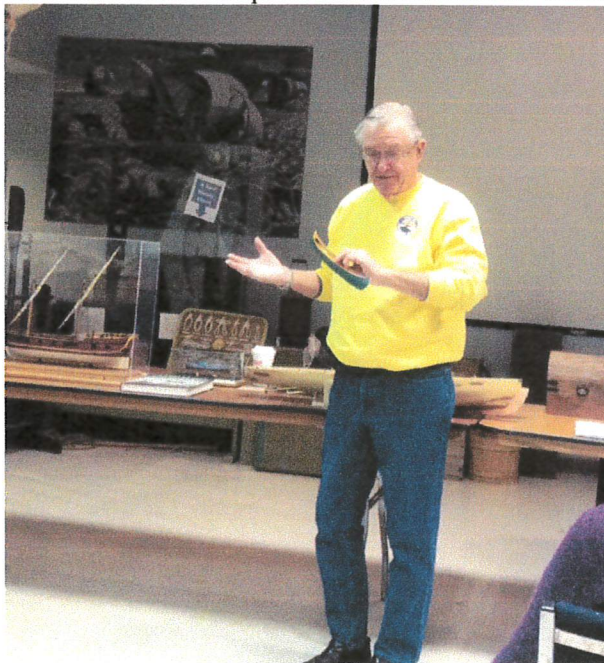
PSMS *FEBRUARY* MEETING



PSMS *FEBRUARY* SHOW N' TELL



1. **Joe Gudonis** kicked off SHOW N' TELL with a discussion of batteries for remote control by telling of his experiences with a company that fixes batteries. Joe spoke about lithium batteries and compared them to other kinds. Several members contributed their experiences.



2. Two models were presented by **Joe Jordan**. To the left is an American Girl canoe from a Midwest kit. Materials included cloth, brass, bass and cherry woods. The kit needed attention to have everything in proportion. **Joe** also showed us his progress on the RC model of a sub chaser that several members have as a project. This is a Dumas kit, 1/35 scale, also modified.

PSMS *FEBRUARY* SHOW N' TELL



3. **Mike Zimmerman** presented a 1/1,000 plastic Trumpeter model of USNS *General Maurice Rose* (1945-90). Mike used a Liberty Ship model and bashed it into a troop ship. His advice, "Don't throw anything away."



4. **Spence Delin** presented the *Washington*, a rigged Row Galley built of green wood for use on Lake Champlain (in case). US Navy (circa 1776) is 1/48 scale scratch built. Also note the picture on the table. It is of the model of the Raleigh, a 32 gun Continental frigate. It was built by **Spence's** late father and is now in the Peabody Essex Museum.

PSMS *FEBRUARY* SHOW N' TELL



5. **Fred Signor** is another member bitten by the 110 foot sub chaser bug. He presented the question of building a model of a ship with three propellers. Those who are building a sub chaser had different opinions. All were impressed by the jig **Fred** built to align the propeller shafts.



6. **Left: Ron Spicer** is completing a model of the *Olympia* ISM's use in talks about the ship at meetings away from the museum. It is a Squadron kit modified (for example, rivets needed to be sanded from the hull). **Ron** expects to be finished by next month.



7. **Right: Tom McElhinney** recommended a book, *The Heart of the Great Alone: Scott, Shackleton, and Antarctic Photography*. The visual material is remarkable.

Now hear this ...



Become a Member of ISM ...Independence Seaport Museum members receive free admission to the Museum, Workshop on the Water, the cruiser *Olympia* (shown above) and submarine *Becuna*, as well as invitations to exhibit openings, discounts in the gift shop, special member pricing for special programs and events and preferred access to boating opportunities on visiting tall ships.

Membership levels: Individual - \$45 (benefits apply to one person); Family - \$75 (benefits apply to up to five people in the same household); see their website for other levels.

NOTE: As a member of PSMS you are considered a **VOLUNTEER** at ISM—in addition to working in the SHACK, we are encouraged to volunteer at other events sponsored by the museum! Each month Katie Burke (Education & Volunteer Coordinator at ISM) will send you **VOLUNTEER NEWS**—
See the different areas where we are needed and –

VOLUNTEER!

NOTE: All volunteers need to sign in and out from the museum from now on. The sign in book is located by the front desk on the podium. Boat shop volunteers will continue to sign in and out at the boat shop. Ships volunteers will sign in and out on the ships, unless they are coming into the museum and then they would sign in and out there as well. For PSMS, you will also need to sign in and out at the front desk.

Therefore if there is an emergency we will know who all is in the building at that time. If there is an emergency inside the museum, please exit the building and meet at the Walnut Street steps. For those on the ships, you will meet on the landing in front of the ships. Please let me know if you have any questions or concerns.

If you have been by the museum lately, you will have noticed the big changes happening on our galleries. We have taken down a large part of our main exhibit to make way for our new schooner, *Diligence II*. It is exciting too for the Seaport Museum and I hope you can come down and lend a hand. (See pictures on the next page.)

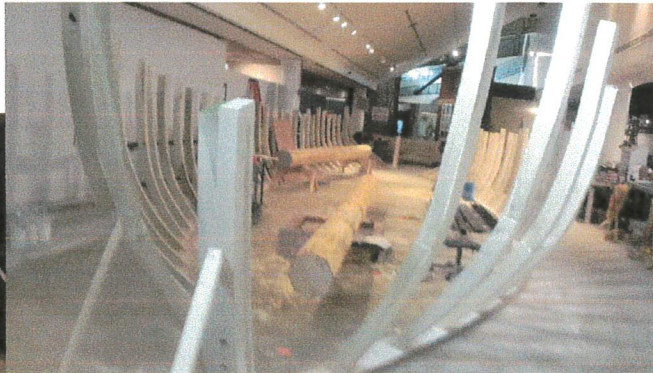
Best, Katie Burke

Education and Volunteer Coordinator, Independence Seaport Museum, Philadelphia



Now hear this continued ...

***DILIGENCE II* UNDER CONSTRUCTION AT ISM**



The stem is up! (Picture to the Right). The transom end of the Schooner Diligence II, 65' long at the deck. The deck will be about 2' off the floor, and the hull fully planked with 1 1/2" poplar. The planks are 5" wide, and the public can watch the construction this week. The 2 masts will pierce the ceiling. *Joe Jordan*



THE SHACK

Don't forget to contact Joe Jordan (ijvtown@aol.com). ***VOLUNTEER!***

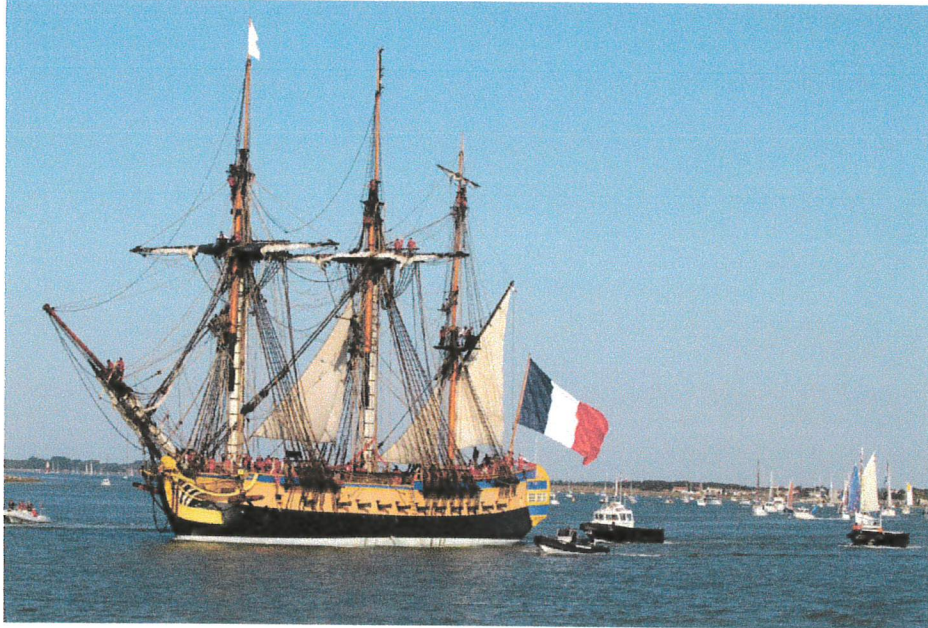


Did you know this about the U.S. Navy in Philadelphia

- The birth of the Navy and it's first commanders
- Design and building of the original six frigates of the Navy
- The U.S. Navy Arsenal at Washington Avenue
- Frigates, cruisers and battleships built by Philadelphia shipbuilders
- The Naval Asylum and Home in Philadelphia
- Operations and work in a federal shipyard

Now hear this continued ...

TALL SHIPS Philadelphia • Camden



Adding excitement to a waterfront that is already bubbling with activity, Tall Ships® Philadelphia-Camden is slated to bring majestic vessels up the Delaware River in early summer on June 25-28. Tall Ships® Philadelphia-Camden has the distinction of being the largest sailing event in the United States in 2015.

With over a dozen magnificent domestic and international ships planning to attend Tall Ships® Philadelphia – Camden, visitors can catch a glimpse, step aboard and even set sail on some of the most meticulously crafted ships of yore.

The unique two-sided waterfront affords increased accessibility for visitors from both sides of the river and creates the perfect venue for a myriad of festival attractions and of course, Tall Ships.

The event is sponsored by a collaboration of four Delaware waterfront organizations: the Delaware River Waterfront Corporation, Coopers Ferry Partnership, Adventure Aquarium and Independence Seaport Museum.

An abundance of attractions will accompany the Tall Ships such as historical reenactments, live music, dance, youth sail training, a craft beer garden and the regions finest fare.

Tickets are on sale NOW. Click [here](#) to purchase or call 877-4FLY-TIX. Tickets are good for attractions in both Camden and Philadelphia.

For more information:

Official website: TallShipsPhiladelphia.com

Facebook: www.facebook.com/TallShipsPC

Twitter: @TallShipsPC

SAVE THE DATE: Thursday 25 June for a La Grande Fete at 6 o'clock in the evening at ISM.



Now hear this continued ...

NEW PSMS WEBSITE!!



YOUR PATIENCE HAS BEEN APPRECIATED—NEW WEBSITE

WILL SOON ARRIVE!

<http://philadelphia ship model society.com>





First State Mini Club

38th ANNUAL SHOW & SALE

Show info - 484-433-3768
Dealer info - 610-347-2255
Exhibit Info - 302-654-8278
Hotel Info - 302-428-1000
Email: show@firststateminiclub.org

SUNDAY, MARCH 22, 2015
10:00 AM - 4:00 PM
Clarion Hotel "The Belle"
1612 N. Dupont Hwy, New Castle, DE 19720

NEW LOCATION!

- ❖ Dollhouse & miniature exhibits
- ❖ Quality vendors and artisans
- ❖ Cast your vote in the "People's Choice Awards"
- ❖ Door prizes, refreshments & free parking

Adults - \$5.00 | Children under 12 - \$2.50
Adult with ad/postcard or Senior Citizen - \$4.50
Partial proceeds to charity | No baby strollers, please

www.firststateminiclub.org



Our 2015 show is moving to a **new location!** The beautiful [Clarion Hotel - The Belle](#) in New Castle Delaware. [Click here](#) for more information, directions and map.

At this point in time, our exhibits chair Marnie King would like to collect exhibits registration forms so that she can plan for the needed space. We will be at a new venue this year, The Clarion (The Belle), 1612 N. Dupont Hwy, New Castle, DE 19720, near the Delaware Memorial Bridge, and so our space needs to be planned carefully. Please send Marnie a form ASAP if you would like to show an item, even if you are not sure it will be finished by March 22nd, so that a space can be reserved. She may not be able to accommodate last-minute entrees. On the other hand, she finds it easy to spread items out to fill an open space if necessary. Here is the link to the form:

<http://naturalhistorydelaware.us5.list-manage2.com/track/click?u=52df3edd391ef1fd367145bde&id=688d3e230b&c=c679719fc8>

Lois Weyer, FSMC Board Member and Hotel Liaison



Now hear this continued ...



WOODS HOLE BOAT SHOW,

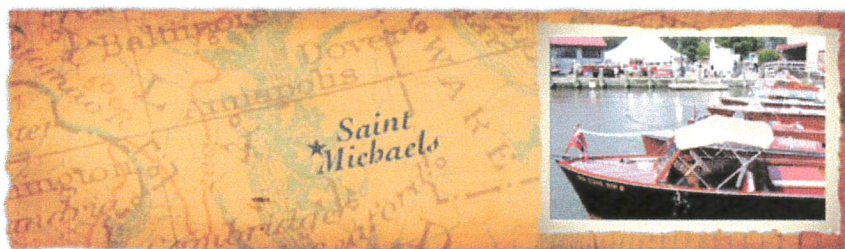
18 and 19 APRIL John Oddo and Mike Weaver attended this show in 2013—the show meets every other year and the 2015 event will take place on Patriot's Day Weekend—18 and 19 April 2015. Hours: 9 am to 4 pm Saturday; 9 am to 3 pm Sunday. The show features displays of model boats built by enthusiasts from all over New England and beyond. Displays include historical representations, racing boats, tug boats, war boats, pleasure boats, working boats, whimsical feats of Imagineering and more.

There are races of remote controlled sailboats in Eel Pond, which is connected to the ocean by a drawbridge. There are presentations by people doing interesting things with models and other boats. There is a “kiddie pool” for kids of all ages to float their own boats (we have kits available to construct your own simple sail boats) or practice with remote control “motor boats”. Come see the boats, talk with the builders, listen to the presentations, sail your own model, and have a great time!



1st Annual Mid-Atlantic Ship Model Conference & Show

As far as we know, the proposed 13 June 2015 event has been cancelled or postponed. Stay tuned.



The Antique & Classic Boat Show, 19-21 June.

Please see their website for details: www.chespeakcbayacbs.org

Chesapeake Bay Maritime Museum

St. Michaels, Maryland

Friday 11-5 • Saturday 10-5 • Sunday 10-2



Now hear this continued ...

**MODEL GUILD OF THE CHESAPEAKE BAY MARITIME MUSEUM, the NORTH
AMERICAN STEAMBOAT MODERLER'S ASSOCIATION, and the
WASHINGTON SHIP MODEL SOCIETY**

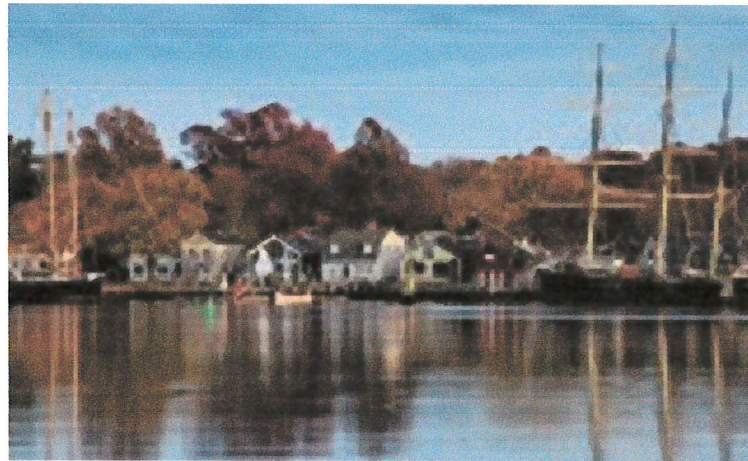
3 & 4 October 2015



**NAUTICAL RESEARCH GUILD 2015
CONFERENCE**

MYSTIC, CONNECTICUT 22-24 OCTOBER

The conference will be at the MYSTIC HILTON LESS which is less than one mile from the Seaport.



(continued)

Now hear this continued ...

NAUTICAL RESEARCH GUILD (NRG) and NAUTICAL RESEARCH JOURNAL (NRJ):

NOTE: Annual dues are \$38 which includes one year membership in the NRG and 4 issues of the NRJ. Mail payments to: Nautical Research Guild, Inc., 20 Water Street, P.O. Box 7, Cuba, NY 14727. Check out their website www.theNRG.org. This is an important membership, as their goal is "Advancing Ship Modeling through Research".



THE SSMA JOURNAL: Lots of news and pictures about PSMS in their editions. Become a member of SSMA; Annual dues are \$25 and sent to John Amann, 758 Regency Park Drive, Crystal Lake, IL 60014. Your check should be made payable to SSMA.



PSMS SHIRTS & CAPS WITH SOCIETY LOGO



We can order shirts and caps with the embroidered Society logo and for the first time women's sizes are available.

Prices are:

Long-sleeved polo shirts, navy blue, men's sizes \$35.00

available in small through 4XL

Add \$2.00 for 2XL, \$3.00 for 3XL, and \$4.00 for 4XL

Women's sizes small through 2X

\$35.00

Short-sleeved polo shirts, navy blue,

men's sizes small through 6XL and tall in XL through 3X

\$28.75

Women's sizes available sizes small through 3XL

\$28.75

Hats 6 panel wave cap, navy with white trim

\$14.50

There is interest in woven fabric shirts and I will have catalogues showing them as well as the knit shirts. The prices in the catalogues are not the final cost with the logo but are expected to be \$30.00 or less, including the embroidered logo.

If you would like to place an order please let Pat Leaf know at pjlebk@comcast.net. Please be sure of your size.

2015 PSMS OFFICERS & EXECUTIVE BOARD

President: Tom McElhinney (shipshape51@verizon.net); Vice-President: Fred Signor: (fsignor@comcast.net);
Secretary/Editor: Alice McElhinney (alice9books@verizon.net); Treasurer: Ed Leaf (pilebl@comcast.net).

Members-at-Large:

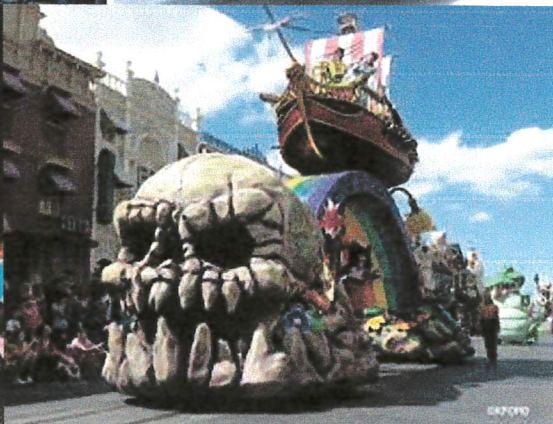
John Christinzio (johnchristinzio@hotmail.com); Spence Delin (sdelin@verizon.net); John Esposito (limatango622@verizon.net);
Joe Gudonis; Joe Jordan (jivtown@aol.com); Pat Leaf (pilebl@comcast.net); Jim MacIntyre (JMacin5573@aol.com);

Josef Messmer (jrm8391@comcast.net); John Oddo (johnmariao.1959@gmail.com)

Rick Rathgeber (rrathgeber@usa.net); Francine Serratore (fserratore@verizon.net); Mike Weaver (eghannah@gmail.com);

Mike Zimmerman (barbarazimm@verizon.net)

Webmaster: Spencer Anderson



Ships/boats in various Mardi Gras parades! Let the good times roll!

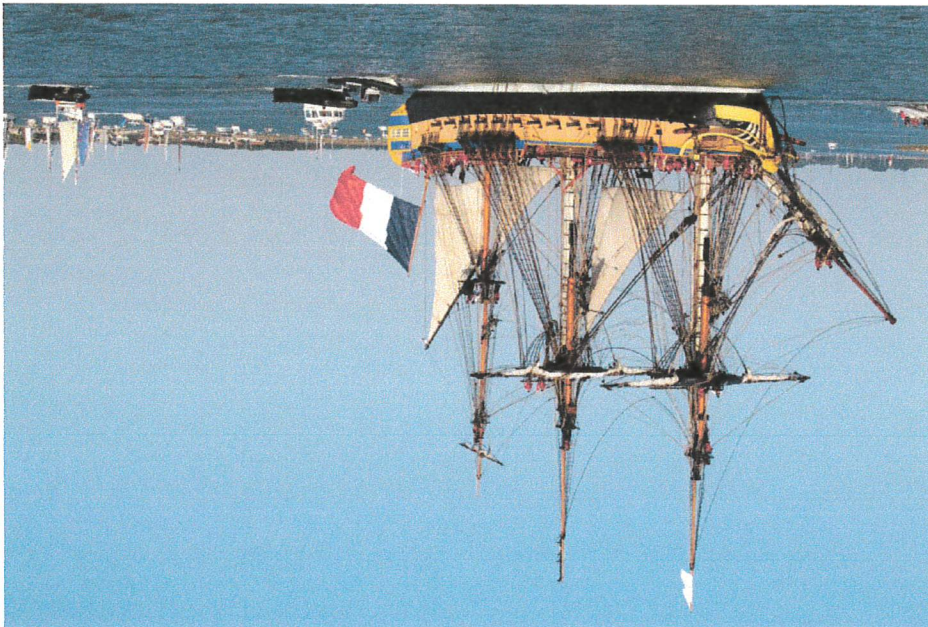


Field1	Field2	Field3	Field4	Field5	Field6	Field7	Field8	Field9	Field10
Spencer A.	Anderson	925 S. 2nd St Unit A1	Philadelphia	PA	19147	201 445 1548	talpine7@aol.com	Lynnann	
Stanford	Back	2221 Panama St.	Philadelphia	PA	19103	215 732 3497		Cecile	
Craig	Bennett	106 E. Roland Ave.	Maple Shade	NJ	08052	856 488 8499	mplshdraig6@aol.com	Cathy	
Nora J.	Berlinger	613 Dresherton	Ft. Washington	PA		215 793 9168	nberlinger@comcast.net	Richard	
Richard	Berlinger	613 Dresherton	Ft. Washington	PA		215 793 9168	richard@berlingerlaw.com	Nora	
Julian A.	Blanco	3715 Hamilton St.	Philadelphia	PA	19104	267 973 0211	Redtrek524@yahoo.com		
Brian	Brandt	509 Columbia Ave.	Lansdale	PA	19446	215 368 9416	brian232425@hotmail.com	Carol	
Stephen	Bulova	4631 Larchwood Ave.	Philadelphia	PA	19143	215 747 7441	bulovastavel@msn.com	Elly	Family
John	Christinzio	2517 S. Cleveland St.	Philadelphia	PA	19145	215 271 0447	johnchristinzio@hotmail.com	Ann	Emeritus
William	Crothers	238 Street Road	Southampton	PA	18966	215 355 4304		Marge-	Deceased
Mrs. Jean	Cyllax	514 High St.	Hatboro	PA	19040	215 675 7707		Deceased	
Spence	Delin	1037 Elephant Rd.	Perkasie	PA	18944	215 249 0867	sdelin@verizon.net	Sue	Courtesy
Aziz	Diaby	322 Richfield Rd.	Upper Darby	PA		484 461 4764	bloom4metonight@yahoo.com		Family
Barry A.	Dubin	1011 N. Hancock	Philadelphia	PA	19082		barrydubin44@gmail.com	Dianne	
Joseph	Englisch	144 Cherry Tree Lane	Cherry Hill	NJ	08002		jenglisch@expressmarine.com		
John & Nancy	Esposito	862 Central Ave.	Southampton	PA	18966	215 357 5416	limatango622@gmail.com	Nancy	Family
Kurt	Faust	191 Michele Drive	Harleysville	PA	19438	267 932 8500			
Jim J.	Ferris	252 Cleveland	Norwood	PA		19074 484 497 6572	JohnGraham252@comcast.net	Dusty	
Dusty	Ferris	252 Cleveland	Norwood	PA		19074 484 497 6572	JohnGraham252@comcast.net	Jim	
Barry	Gilles	1300 Cromwell Road	Wyndmoor	PA	19038	215 836 1267	barrygilles@hotmail.com	Carol	
Donald	Grasmick	599 Brenford St.	Smyrna	DE	19977	302 241 6296	dwr3132@yahoo.com	Amanda	
Steven	Green	2136 Brighton	Philadelphia	PA	19149	215 332 6286	Searaven.SS196@gmail.com		
Joseph	Gudonis	300 Friendship St.	Philadelphia	PA	19111	215 742 3352	theresarhicks@gmail.com	Loretta	
Theresa	Hicks	1512 Spruce St., #409	Philadelphia	PA	19102	561 568 7972	david12541@verizon.net		
David	Jacobs	1809 Hood Lane	Maple Glen	PA	19002	215 643 3868	jvtown@aol.com	Jean	
Joe	Jordan	P.O. Box 535	Lumberton	NJ	08048	609 518 9672		Barbara	
Jerry	Kates	191 Presidential Blvd Unit410	Bala Cynwyd	PA	19004	215 570 3364	jbkates@verizon.net		
Charles	Kester	105 Hartford Rd.	Mt. Laurel	NJ	08054	856 235 2788			
Allan	Kline	12 Harvest Lane	Medford	NJ		8055 609 744 6645	Allan.Kline@gmail.com		
Harry	Kyriakodis	Unit 241, 3 N. Columbus Blvd	Philadelphia	PA		215 260 5448	hkyriakodis@gmail.com		
First Name	Last Name	Address	City	St	Zip	Telephone	Email	Spouse	
Harold	Lazaar	3750 Newbolt Ct.	Doylstown	PA	18901	215 794 6904	hlazaar@aol.com	Eivor	
Edwin	Leaf	433 Summer Ave.	Edgewater Park	NJ	08010	609 387 0667	pilebl@comcast.net	Pat	
Pat	Leaf	433 Summer Ave.	Edgewater Park	NJ	08010	609 387 0667	pilebl@comcast.net	Ed	
Dennis	Levitt	558 Barn Drive	Yardley	PA	19067	215 295 8187	dlevitt1111@comcast.net	Sharyn	
Roman	Lukasiewicz	1143 N. 4th St.	Philadelphia	PA		19123 215 627 2932	lukasewycz@aol.com		Courtesy
Raymond	Lynch	Box 2	Furlong	PA	18925	215 598 3726			

Received from
Raymond

TALL SHIPS Philadelphia • Camden

Now Rear Rais continued ...



Adding excitement to a waterfront that is already bubbling with activity, Tall Ships® Philadelphia-Camden is slated to bring majestic vessels up the Delaware River in early summer on June 25-28. Tall Ships® Philadelphia-Camden has the distinction of being the largest sailing event in the United States in 2015.

With over a dozen magnificent domestic and international ships planning to attend Tall Ships® Philadelphia – Camden, visitors can catch a glimpse, step aboard and even set sail on some of the most meticulously crafted ships of yore. The unique two-sided waterfront affords increased accessibility for visitors from both sides of the river and creates the perfect venue for a myriad of festival attractions and of course, Tall Ships.

The event is sponsored by a collaboration of four Delaware waterfront organizations: the Delaware River Waterfront Corporation, Coopers Ferry Partnership, Adventure Aquarium and Independence Seaport Museum.

An abundance of attractions will accompany the Tall Ships such as historical reenactments, live music, dance, youth sail training, a craft beer garden and the regions finest fare. Tickets are on sale NOW. Click [here](#) to purchase or call 877-4FLY-TIX. Tickets are good for attractions in both Camden and Philadelphia.

For more information:

Official website: TallShipsPhiladelphia.com

Facebook: www.facebook.com/TallShipsPC

Twitter: @TallShipsPC

SAVE THE DATE: Thursday 25 June for a La Grande Fete at 6 o'clock in the evening at ISM.

